



Similar to figure

Data sheet

Hydraulic data

Maximum operating pressure $P_N$	10 bar
Delivery head for $Q_{min}$ $H_{Q_{min}}$	5.2 m
Max. volume flow $Q_{max}$	4.4 m <sup>3</sup> /h
Min. fluid temperature $T_{min}$	2 °C
Max. fluid temperature $T_{max}$	65 °C
Min. ambient temperature $T_{min}$	0 °C
Max. ambient temperature $T_{max}$	40 °C
Max. permitted total water hardness	3.21 mmol/l (18°dH)

Motor data

Mains connection	1~230 V, 50 Hz
Rated power $P_2$	38 W
Rated current $I_N$	0.4 A
Max. speed $n_{max}$	1900 1/min
Power consumption $P_{1\ max}$	93 W
Emitted interference	EN 61000-6-3
Interference resistance	EN 61000-6-2
Protection class motor	IP44
Insulation class	F
Threaded cable connection	1 x PG11
Motor protection	no

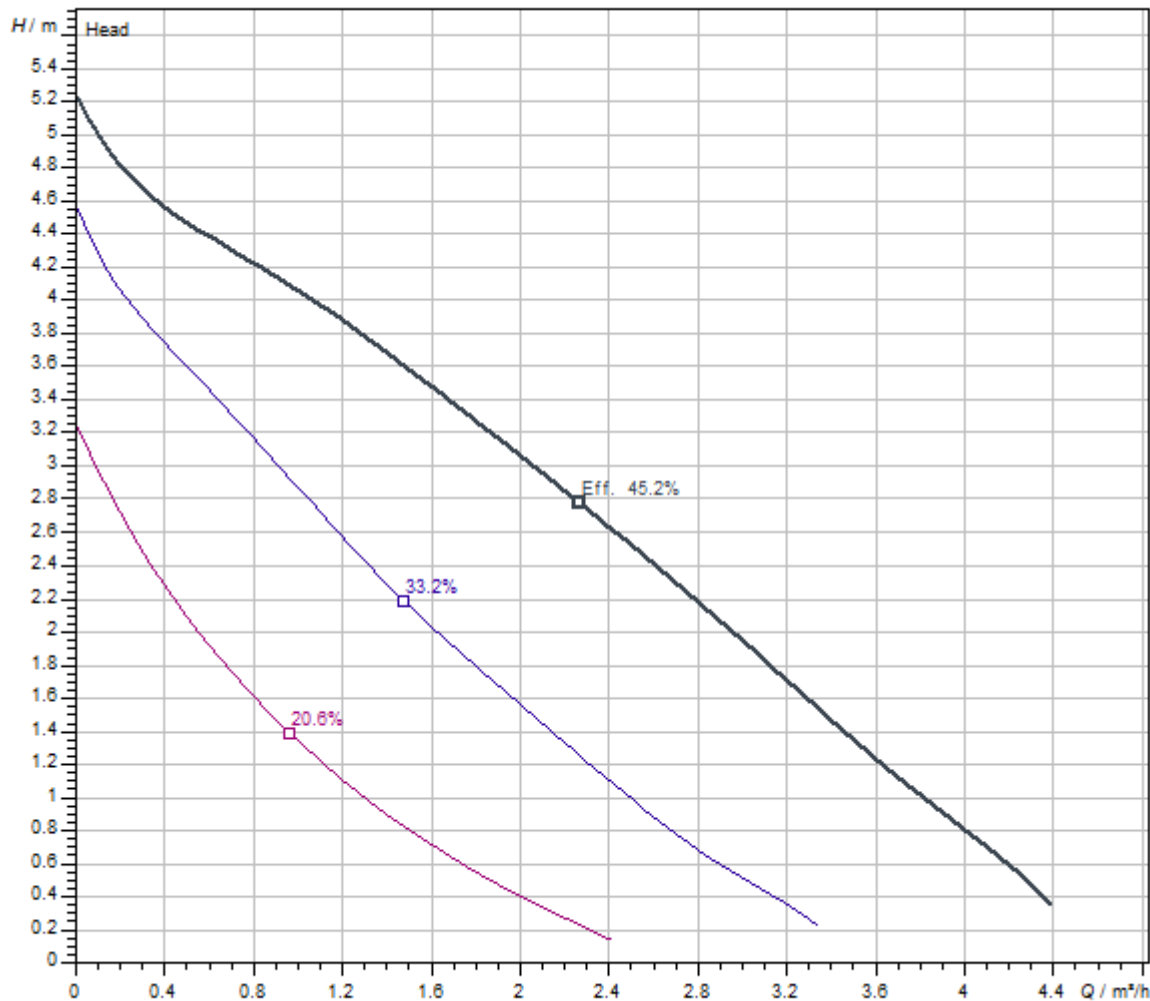
Materials

Pump housing	Bronze, CC499K
Impeller	PPE-GF30
Shaft	Oxide ceramic
Bearing	Carbon, synthetic resin-impregnated

Installation dimensions

Pipe connection on the suction side $DNs$	G 1¼
Pipe connection on the discharge side $DNd$	G 1¼
Port-to-port length $L0$	158 mm

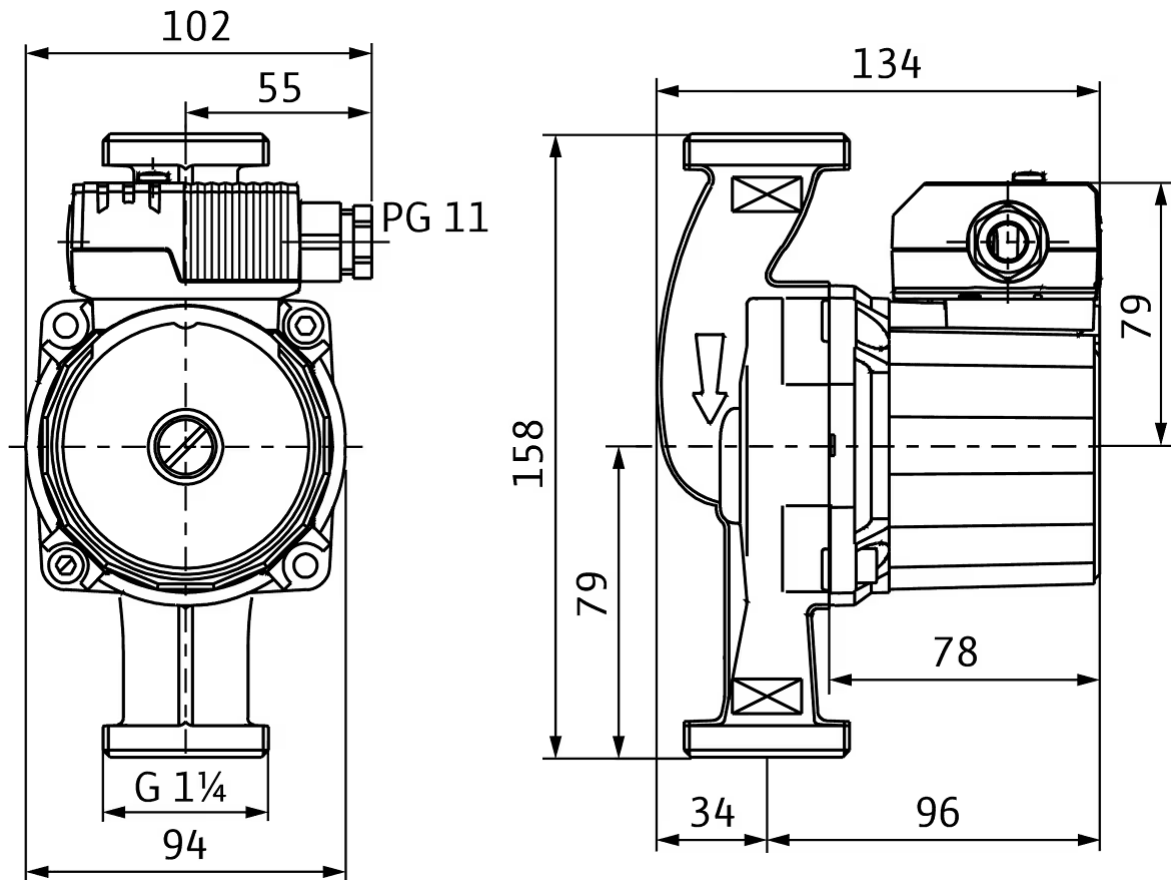
Pump curves

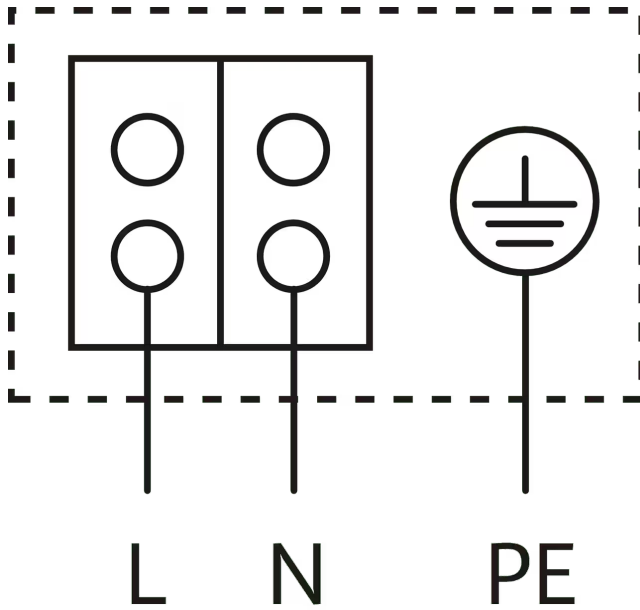


Fluid media	Water 100 %
Fluid temperature <i>T</i>	20.00 °C
speed at duty point <i>n hydr. @ OP</i>	2,900 1/min

# Dimensions and dimensions drawings

## Star-Z 20/5-3(158)



**Wiring diagram****Star-E**

Blocking current-proof motor

**Single-phase motor** (EM) 2-pole - 1~230 V, 50 Hz

With built-in capacitor

## Tender text

This circulator is suitable only for drinking water.

Domestic hot water circulator, glandless pump with manual three-stage variable speed control for pipe installation.

Blocking-current proof motor. Pump housing made of bronze, impeller made of fibreglass-reinforced plastic, ceramic shaft with resin-impregnated carbon friction bearings.

## Operating Data

Max. fluid temperature $T_{\max}$	65 °C
Min. fluid temperature $T_{\min}$	2 °C
Min. ambient temperature $T_{\min}$	0 °C
Max. ambient temperature $T_{\max}$	40 °C
Temperature range at max. ambient temperature +40 °C $T$	+2...+65
Maximum operating pressure $P_N$	10 bar
Max. permitted total water hardness	3.21 mmol/l (18°dH)

## Motor data

Emitted interference	EN 61000-6-3
Interference resistance	EN 61000-6-2
Mains connection	1~230 V, 50 Hz
Power consumption $P_{1\max}$	93 W
Max. speed $n_{\max}$	1900 1/min
Rated current $I_N$	0.4 A
Protection class motor	IP44
Threaded cable connection	1 x PG11

## Materials

Pump housing	Bronze, CC499K
Impeller	PPE-GF30
Shaft	Oxide ceramic
Bearing	Carbon, synthetic resin-impregnated

## Installation dimensions

Pipe connection on the suction side $DN_s$	G 1¼
Pipe connection on the discharge side $DN_d$	G 1¼
Port-to-port length $L_0$	158 mm

## Ordering information

Brand	Wilo
Product description	Star-Z 20/5-3(158)
Net weight, approx. $m$	2.4 kg
Article number	<b>4232265</b> 

## Mechanical accessories

### Pipe installation

#### Screwed connections/adapters

Screwed connection Rp ¾ x G 1¼, 1 Set	4233251
---------------------------------------	---------

### Thermal insulation

#### Size 14 thermal insulation shell

Thermal insulation shell (Size 14)	4046444
------------------------------------	---------

## Electrical accessories

### Pump control

#### Timer switch SK 601N

Switchgear SK 601N	2120443
--------------------	---------

## Services

With Wilo as your partner, you can not only be sure of choosing high-quality product solutions, but also of benefiting from a comprehensive, worry-free package of well thought-out services. We collaborate to develop a service concept tailored to your individual needs; with our expertise and personal consultancy, we make sure that the operation of your systems is as energy-efficient, reliable and economical as possible. All the while our competent Wilo service technicians are ready to assist you with fast, reliable and on-time support.

### Recommended services

Wilo-Live Assistant Service	2216415
-----------------------------	---------

System Optimisation Glandless pumps	2219250
-------------------------------------	---------

Energy Solutions Glandless pumps	2219285
----------------------------------	---------

### More suitable services

Extended Warranty Glandless pumps	2219589
-----------------------------------	---------

Supervision Glandless pumps	2219320
-----------------------------	---------

Installation Glandless pumps	2219355
------------------------------	---------

Commissioning Glandless pumps	2219390
-------------------------------	---------

Maintenance BASIC Glandless pumps	2219530
-----------------------------------	---------

Maintenance COMFORT Glandless pumps	2219416
-------------------------------------	---------

Maintenance PREMIUM Glandless pumps	2219545
-------------------------------------	---------

Repair Glandless pumps	2219609
------------------------	---------