



Data sheet

Hydraulic data

| | |
|-------------------------------------|------------------------------|
| Maximum operating pressure P_N | 7 bar |
| Impeller type | Open single-channel impeller |
| Free ball passage of the hydraulics | 5 mm |
| Max. volume flow Q_{\max} | 11.9 m ³ /h |
| Max. delivery head H_{\max} | 9.9 m |
| Min. fluid temperature T_{\min} | 3 °C |
| Max. fluid temperature T_{\max} | 35 °C |
| Min. ambient temperature T_{\min} | 3 °C |
| Max. ambient temperature T_{\max} | 35 °C |

Motor data

| | |
|--------------------------------|----------------------|
| Mains connection | 1~230 V, 50 Hz |
| Voltage tolerance | ±10 % |
| Rated power P_2 | 0.4 kW |
| Rated current I_N | 2.3 A |
| Rated speed n | 2900 1/min |
| Power consumption $P_{1 \max}$ | 550 W |
| Max. switching frequency t | 50 1/h |
| Activation type | Direct On Line (DOL) |
| Insulation class | B |
| Protection class motor | IP44 |

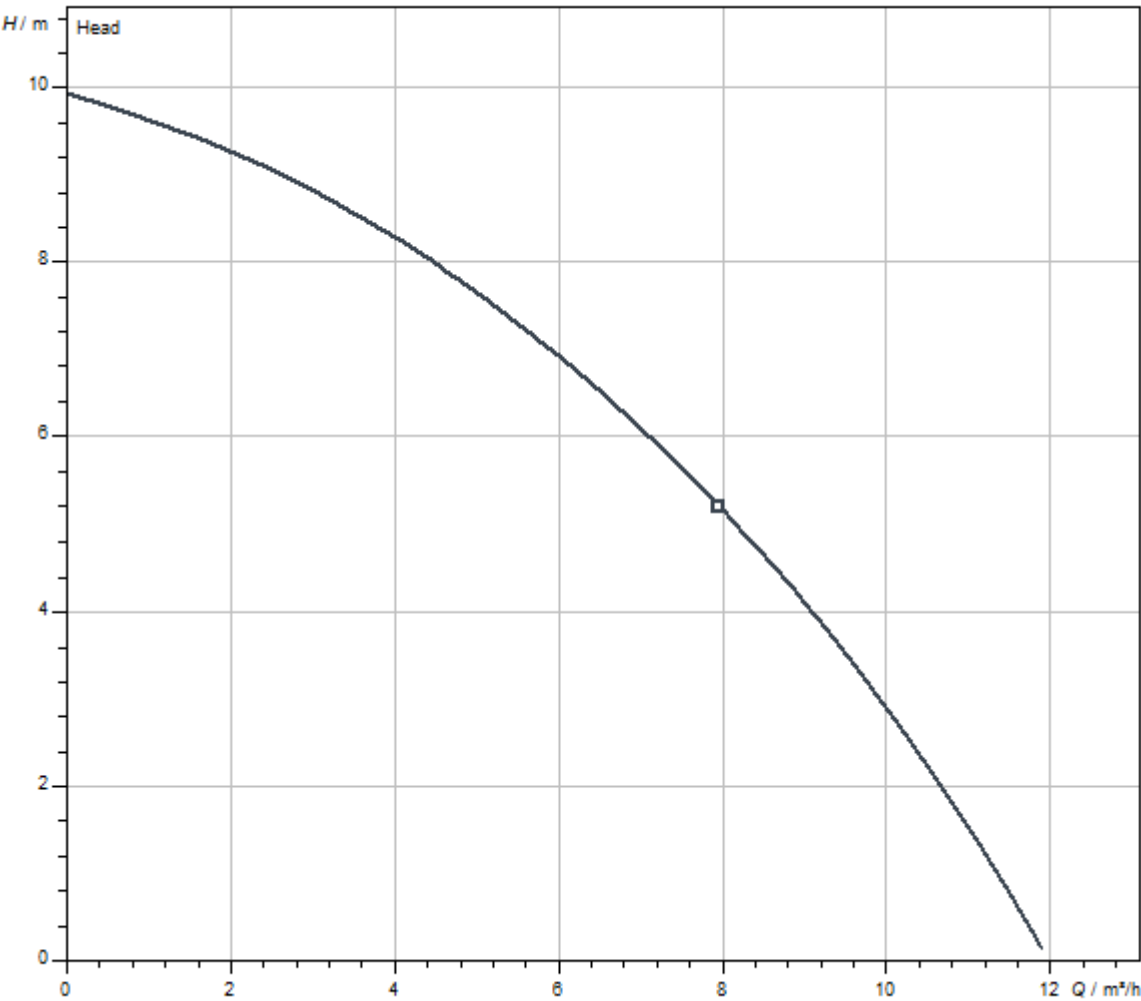
Materials

| | |
|-----------------|------------------------------|
| Pump housing | PP |
| Impeller | Brass |
| Shaft | Stainless steel |
| Shaft seal | BXPFF |
| Gasket material | NBR |
| Motor housing | 5.1301/EN-GJL-250 KTL-coated |

Installation dimensions

| | |
|--|-------|
| Pipe connection on the suction side DN_s | Rp 1½ |
| Pipe connection on the discharge side DN_d | Rp 1½ |

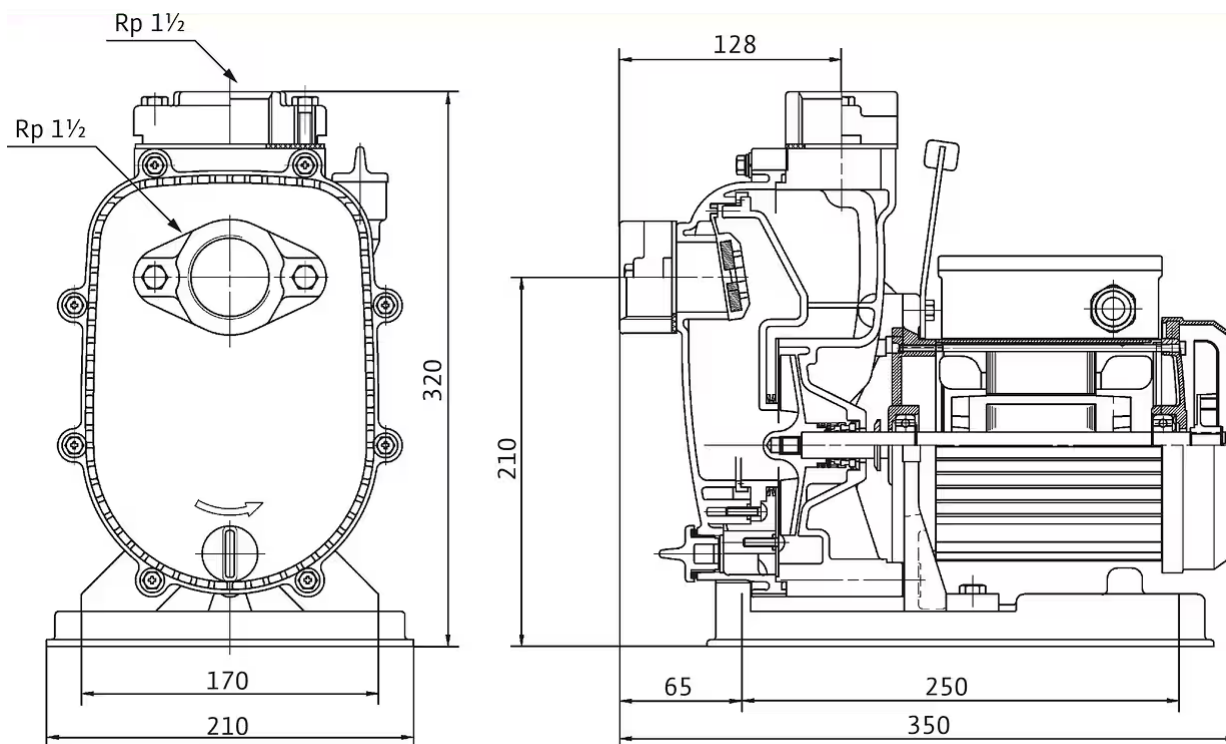
Pump curves



| | |
|---|-------------|
| Fluid media | Water 100 % |
| Fluid temperature <i>T</i> | 20.00 °C |
| speed at duty point <i>n hydr. @ OP</i> | 2,900 1/min |

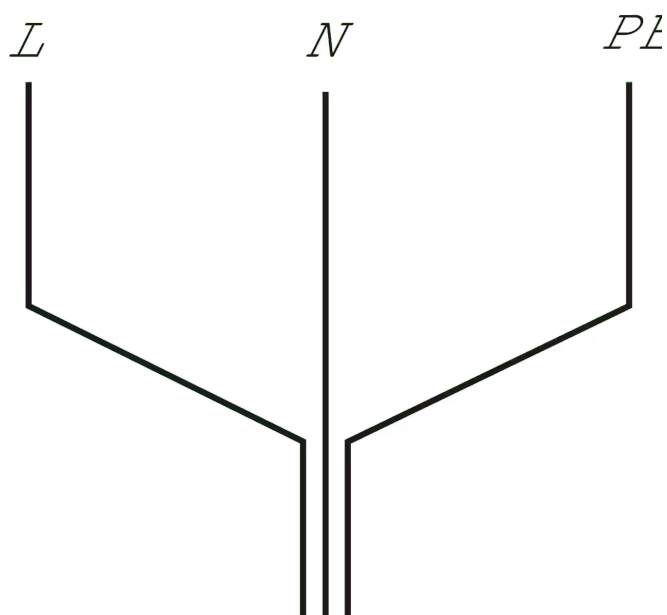
Dimensions and dimensions drawings

Wilo-Drain LP 40/10



Wiring diagram

1~230 V, 50 Hz



Tender text

Self-priming drainage pump for the portable and stationary dry well installation for pumping clean and lightly contaminated water and sea water. Hydraulics with a horizontal suction connection and a vertical pressure connection and threaded connection. Vortex impellers are the impeller type used. Hydraulics made

of plastic, impeller made of brass. Drive is provided by a single-phase version standard motor that features a motor housing made of aluminium. The connection cable must be provided by the customer. The hydraulics and motor have a common shaft. Stable installation is carried out using a low-vibration baseplate.

Operating Data

Product data

| | |
|-------------------------------------|------------------------------|
| Impeller type | Open single-channel impeller |
| Free ball passage of the hydraulics | 5 mm |
| Maximum operating pressure P_N | 7 bar |
| Fluid temperature T | 3 °C |

Motor data

| | |
|--------------------------------|----------------------|
| Mains connection | 1~230 V, 50 Hz |
| Voltage tolerance | ±10 % |
| Rated power P_2 | 0.4 kW |
| Power consumption $P_{1 \max}$ | 0.55 kW |
| Rated current I_N | 2.3 A |
| Activation type | Direct On Line (DOL) |
| Rated speed n | 2900 1/min |
| Max. switching frequency t | 50 1/h |
| Insulation class | B |
| Protection class | IP44 |

Materials

| | |
|-----------------|------------------------------|
| Pump housing | PP |
| Impeller | Brass |
| Shaft | Stainless steel |
| Shaft seal | BXPFF |
| Gasket material | NBR |
| Motor housing | 5.1301/EN-GJL-250 KTL-coated |

Installation dimensions

| | |
|--|-------|
| Pipe connection on the suction side D_Ns | Rp 1½ |
| Pipe connection on the discharge side D_Nd | Rp 1½ |

Ordering information

| | |
|-------------------------|--|
| Brand | Wilo |
| Product description | Drain LP 40/10 |
| Net weight, approx. m | 12 kg |
| Article number | 2047645  |

Installation type

Level control with float switch

Level measurement using a level sensor with various measurement ranges, including high water alarm and dry-running protection.

Wilo-Control MS-Lift

| | |
|----------------|---------|
| MS-L-1x4kW-DOL | 2539741 |
| MS-L-2x4kW-DOL | 2539745 |

Battery 9V,200mA

| | |
|--|---------|
| NiMh rechargeable battery, 9 V/200 mAh | 2522850 |
|--|---------|

Float switch WA

| | |
|-----------------------------------|-----------|
| Float switch WA65 with 10 m cable | 503211893 |
| Float switch WA65 with 20 m cable | 2004431 |
| Float switch WA65 with 30 m cable | 2004432 |
| Float switch WA65 with 5 m cable | 503211390 |

Signal horn

| | |
|---------------------|-----------|
| Signal horn 1~230 V | 501459398 |
|---------------------|-----------|

Flash light

| | |
|-----------------------|---------|
| Flash light 1~230 VAC | 2551613 |
|-----------------------|---------|

Mains-independent alarm signal

Alarm signal for detection of flooding in rooms and buildings. The alarm signal is acoustic, optical or wireless. In addition, other consumers can be controlled directly.

AlarmControl

| | |
|----------------|---------|
| AlarmControl 1 | 2522846 |
| AlarmControl 2 | 2522847 |

Small alarm switchgear

| | |
|----------------------------|-----------|
| Small alarm switchgear KAS | 501534094 |
|----------------------------|-----------|

Simple mains connection

Accessories for simple connection to the mains system.

Connection cable kit

| | |
|--|---------|
| 5 m connection cable including plug with on/off switch | 2050436 |
|--|---------|

Portable dry installation DN 40

Hose connection

| | |
|--------------------------|---------|
| Hose nozzle Ø 40 mm/R 1½ | 4027335 |
|--------------------------|---------|

Plastic hose without coupling

| | |
|---------------------------------------|---------|
| Synthetic pressure hose 15 m, Ø 42 mm | 2027643 |
| Synthetic pressure hose 3 m, Ø 42 mm | 2027641 |
| Synthetic pressure hose 5 m, Ø 42 mm | 2027642 |

Suction hose set for drainage and sewage

| | |
|-------------------------------------|---------|
| Suction hose set Rp 1½ (DN 40), 3 m | 6042689 |
| Suction hose set Rp 1½ (DN 40), 6 m | 6042690 |

Mechanical accessories

Hoses / hose joints

Hose connection

| | |
|--------------------------|---------|
| Hose nozzle Ø 40 mm/R 1½ | 4027335 |
|--------------------------|---------|

Plastic hose without coupling

| | |
|--|---------|
| Synthetic pressure hose 10 m, Ø 52 mm | 2017192 |
| Synthetic pressure hose 20 m, Ø 90 mm | 2017193 |
| Synthetic pressure hose 30 m, Ø 90 mm | 2017194 |
| Synthetic pressure hose 10 m, Ø 110 mm | 2017196 |
| Synthetic pressure hose 20 m, Ø 110 mm | 2017197 |
| Synthetic pressure hose 30 m, Ø 110 mm | 2017198 |
| Synthetic pressure hose 10 m, Ø 60 mm | 2018106 |
| Synthetic pressure hose 3 m, Ø 42 mm | 2027641 |
| Synthetic pressure hose 5 m, Ø 42 mm | 2027642 |
| Synthetic pressure hose 15 m, Ø 42 mm | 2027643 |
| Synthetic pressure hose 3 m, Ø 60 mm | 2027644 |
| Synthetic pressure hose 5 m, Ø 60 mm | 2027645 |

Suction hose set for drainage and sewage

| | |
|-------------------------------------|---------|
| Suction hose set Rp 1½ (DN 40), 3 m | 6042689 |
| Suction hose set Rp 1½ (DN 40), 6 m | 6042690 |

Electrical accessories

Pump control

Wilo-Control MS-Lift

| | |
|----------------|---------|
| MS-L-1x4kW-DOL | 2539741 |
| MS-L-2x4kW-DOL | 2539745 |

Pump control/accessories

Battery 9V,200mA

| | |
|--|---------|
| NiMH rechargeable battery, 9 V/200 mAh | 2522850 |
|--|---------|

Alarm signal

AlarmControl

| | |
|----------------|---------|
| AlarmControl 1 | 2522846 |
| AlarmControl 2 | 2522847 |

DrainAlarm

| | |
|------------------|---------|
| DrainAlarm | 2545133 |
| DrainAlarm FIRST | 2550526 |

Flash light

| | |
|-------------------------------|---------|
| Mounted Flash light 1~230 VAC | 2510429 |
| Flash light 24 VDC | 2551612 |
| Flash light 1~230 VAC | 2551613 |

Signal horn

| | |
|-----------------------|-----------|
| Signal horn 12-24 VDC | 2017208 |
| Signal horn 1~230 V | 501459398 |

Small alarm switchgear

| | |
|----------------------------|-----------|
| Small alarm switchgear KAS | 501534094 |
|----------------------------|-----------|

Cable

Connection cable kit

| | |
|--|---------|
| 5 m connection cable including plug with on/off switch | 2050436 |
|--|---------|

Level control

Float switch MS1

| | |
|--|--|
| | |
|--|--|

| | |
|----------------------------------|---------|
| Float switch MS1 with 10 m cable | 2004593 |
|----------------------------------|---------|

Float switch WA

| | |
|---------------------------------------|-----------|
| Float switch WA65 with 5 m cable | 503211390 |
| Float switch WA65 with 10 m cable | 503211893 |
| Float switch WA65 with 20 m cable | 2004431 |
| Float switch WA65 with 30 m cable | 2004432 |
| Float switch WA KR1 S with 5 m cable | 6082806 |
| Float switch WA KR1 S with 10 m cable | 6082807 |

Float switch WAO

| | |
|---------------------------------|-----------|
| Float switch WAO 65, 5 m cable | 503211595 |
| Float switch WAO 65, 10 m cable | 2006027 |
| Float switch WAO 65, 20 m cable | 2004429 |
| Float switch WAO 65, 30 m cable | 2004430 |

Services

With Wilo as your partner, you can not only be sure of choosing high-quality product solutions, but also of benefiting from a comprehensive, worry-free package of well thought-out services. We collaborate to develop a service concept tailored to your individual needs; with our expertise and personal consultancy, we make sure that the operation of your systems is as energy-efficient, reliable and economical as possible. All the while our competent Wilo service technicians are ready to assist you with fast, reliable and on-time support.

Recommended services

| | |
|------------------------------------|---------|
| Commissioning Drainage pumps | 2219491 |
| Wilo-Live Assistant Service | 2216415 |
| Maintenance BASIC Drainage pumps | 2219540 |
| Maintenance COMFORT Drainage pumps | 2219514 |
| Maintenance PREMIUM Drainage pumps | 2219567 |

More suitable services

| | |
|------------------------------------|---------|
| Extended Warranty Drainage pumps | 2219465 |
| Supervision Drainage pumps | 2219348 |
| Installation Drainage pumps | 2219383 |
| System Optimisation Drainage pumps | 2219278 |
| Energy Solutions Drainage pumps | 2219313 |
| Repair Drainage pumps | 2219632 |