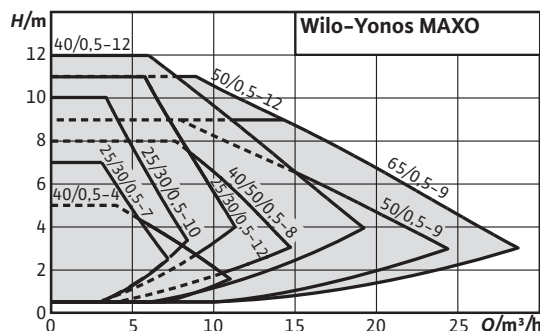


Series description: Wilo-Yonos MAXO



Design

Glandless circulation pump with threaded connection or flange connection, EC motor with automatic power adjustment.

Application

Hot-water heating systems of all kinds, air-conditioning systems, closed cooling circuits, industrial circulation systems.

Type key

| | |
|-------------------|--|
| Example: | Wilo-Yonos MAXO 30/0.5-12 |
| Yonos MAXO | High-efficiency pump (screw-end or flange-end pump), electronically controlled |
| 30/ | Nominal connection diameter |
| 0.5-12 | Nominal delivery head range [m] |

Special features/product advantages

- Maximum efficiency thanks to ECM technology
- LED display for showing delivery head setting
- Quick and convenient electrical connection with Wilo-Connector
- Collective fault signal on all types for assuring system availability
- Simple installation due to PN 6/PN 10 combination flanges (with DN 40 to DN 65)
- Can be used in cooling/air-conditioning systems without ambient temperature limits
- Pump housing with cataphoretic coating for preventing corrosion due to condensation formation

Equipment/function

- Operating modes**
- $\Delta p-c$ for constant differential pressure
 - $\Delta p-v$ for variable differential pressure
- Manual functions**
- Operating mode setting
 - Setting of pump output (delivery head)
- Automatic functions**
- Variable power adjustment depending on the operating mode
 - Deblocking function
 - Soft start
 - Integrated full motor protection
- Signal and display functions**
- Collective fault signal (potential-free NC contact)
 - Fault signal light
 - LED segment display for displaying the delivery head and fault codes
- Equipment**
- Wrench attachment point on pump body (for threaded pipe union pumps)
 - Quick electrical connection with Wilo-Connector. For the connection of the mains and SSM lines, with integrated strain relief
 - For flange-end pumps: Flange versions
 - Standard version for DN 40 to DN 65 pumps: PN 6/10 combination flange (PN 16 flange according to EN 1092-2) for PN 6 and PN 16 counter flanges

Scope of delivery

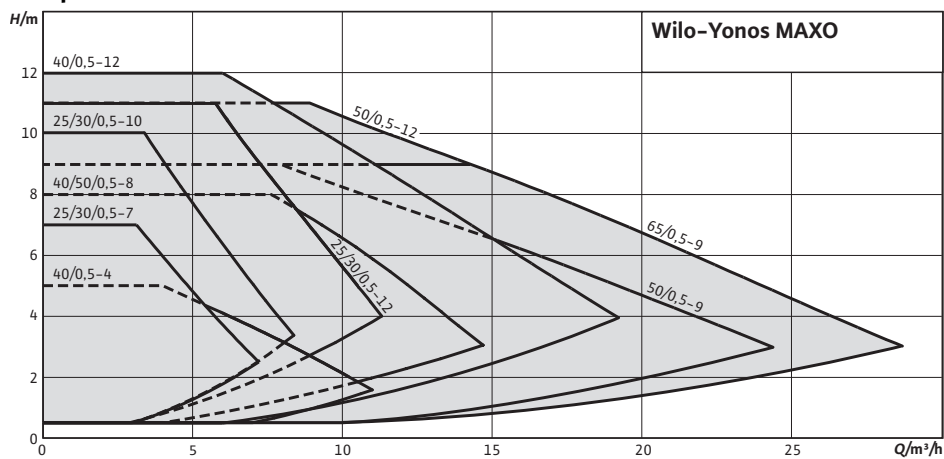
- Pump
- Including gaskets for threaded connection
- Incl. washers for flange screws (for nominal connection diameters DN 40 - DN 65)
- Including installation and operating instructions

Accessories

- Screwed connections for threaded connection
- Adapter fittings
- Thermal insulation

Duty chart: Wilo-Yonos MAXO

Pump curves

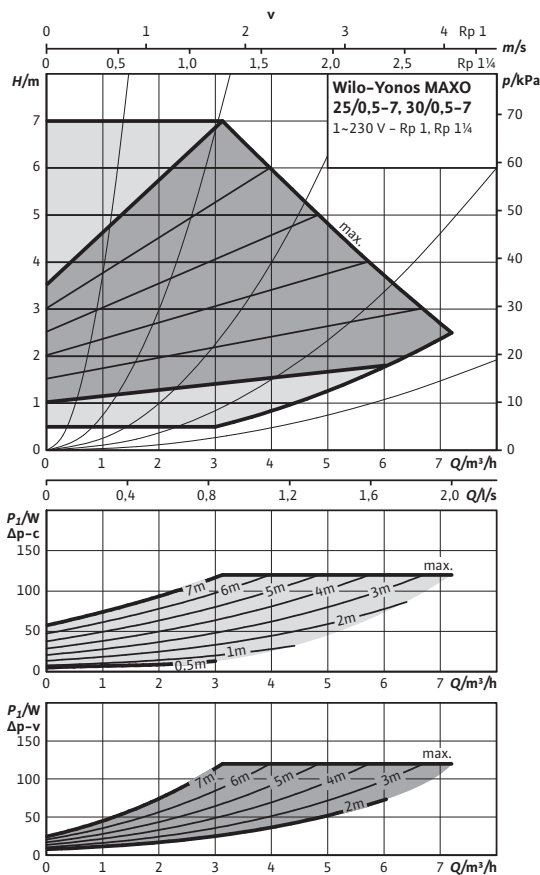


Product list: Wilo-Yonos MAXO

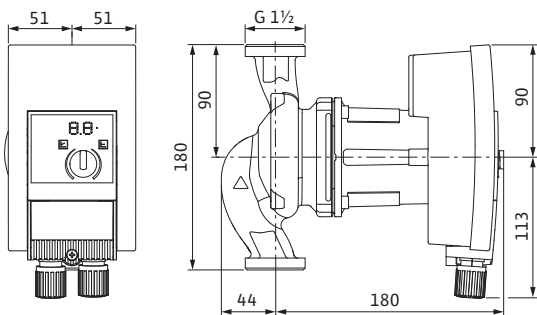
| Type | Pipe connection | Nominal flange diameter | Rated pressure | Overall length | Mains connection | Gross weight | Art no. |
|----------------------|-----------------|-------------------------|-----------------|---------------------------|-------------------|---------------|---------|
| | | | <i>PN / bar</i> | <i>l₀ / mm</i> | | <i>m / kg</i> | |
| Yonos MAXO 25/0,5-7 | Rp 1 | | 10 | 180 | 1~230 V, 50/60 Hz | 5.8 | 2120639 |
| Yonos MAXO 25/0,5-10 | Rp 1 | | 10 | 180 | 1~230 V, 50/60 Hz | 5.8 | 2120640 |
| Yonos MAXO 25/0,5-12 | Rp 1 | | 10 | 180 | 1~230 V, 50/60 Hz | 6.9 | 2120641 |
| Yonos MAXO 30/0,5-7 | Rp 1¼ | | 10 | 180 | 1~230 V, 50/60 Hz | 5.9 | 2120642 |
| Yonos MAXO 30/0,5-10 | Rp 1¼ | | 10 | 180 | 1~230 V, 50/60 Hz | 5.9 | 2120643 |
| Yonos MAXO 30/0,5-12 | Rp 1¼ | | 10 | 180 | 1~230 V, 50/60 Hz | 7 | 2120644 |
| Yonos MAXO 40/0,5-4 | | DN 40 | 6/10 | 220 | 1~230 V, 50/60 Hz | 10.2 | 2120645 |
| Yonos MAXO 40/0,5-8 | | DN 40 | 6/10 | 220 | 1~230 V, 50/60 Hz | 10.8 | 2120646 |
| Yonos MAXO 40/0,5-12 | | DN 40 | 6/10 | 250 | 1~230 V, 50/60 Hz | 14.9 | 2120647 |
| Yonos MAXO 50/0,5-8 | | DN 50 | 6/10 | 240 | 1~230 V, 50/60 Hz | 12.1 | 2120649 |
| Yonos MAXO 50/0,5-9 | | DN 50 | 6/10 | 280 | 1~230 V, 50/60 Hz | 16.1 | 2120650 |
| Yonos MAXO 50/0,5-12 | | DN 50 | 6/10 | 280 | 1~230 V, 50/60 Hz | 16.1 | 2120651 |
| Yonos MAXO 65/0,5-9 | | DN 65 | 6/10 | 280 | 1~230 V, 50/60 Hz | 18 | 2120653 |

Data sheet: Wilo-Yonos MAXO 25/0,5-7

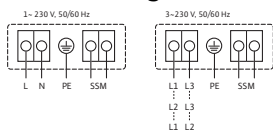
Pump curves



Dimension drawing



Terminal diagram



SSM: Collective fault signal (NC contact according to VDI 3814, load capacity 1 A, 250 V ~)
For function, see Wilo catalogue, chapter "Pump management Wilo control, planning guide"

Approved fluids (other fluids on request)

- Heating water (in accordance with VDI 2035)
- Water-glycol mixtures (max. 1:1; above 20% admixture, the pumping data must be checked)

Permitted field of application

| | |
|--|------------------|
| Temperature range at max. ambient temperature +40 °C | -20...+110 °C |
| Maximum permissible operating pressure | P_{max} 10 bar |

Pipe connections

| | |
|---------------------|--------------|
| Threaded pipe union | Rp 1 |
| Thread | G 1 1/2 |
| Overall length | l_o 180 mm |

Motor/electronics

| | |
|-------------------------------|---------------------|
| Energy efficiency index (EEI) | ≤ 0.23 |
| Electromagnetic compatibility | EN 61800-3 |
| Emitted interference | EN 61000-6-3 |
| Interference resistance | EN 61000-6-2 |
| Speed control | Frequency converter |
| Protection class | IP X4D |
| Insulation class | F |
| Mains connection | 1~230 V, 50/60 Hz |
| Nominal motor power | P_2 90 W |
| Speed | n 1000 - 3700 rpm |
| Power consumption | P_1 5 - 120 W |
| Current consumption | I 0.08 - 0.90 A |
| Motor protection | integrated |
| Threaded cable connection | PG M20x1.5 |

Materials

| | |
|--------------|-----------------------------|
| Pump housing | Grey cast iron (EN-GJL-200) |
| Impeller | Plastic (PPE - 30% GF) |
| Pump shaft | Stainless steel (X46Cr13) |
| Bearing | Carbon, metal impregnated |

Minimum suction head at suction port for avoiding cavitation at water pumping temperature

| | |
|--|----------------|
| Minimum suction head at 50 / 95 / 110 °C | 0.5 / 3 / 10 m |
|--|----------------|

01622 882400 /
 info@atacsolutions.com

Data sheet: Wilo-Yonos MAXO 25/0,5-7

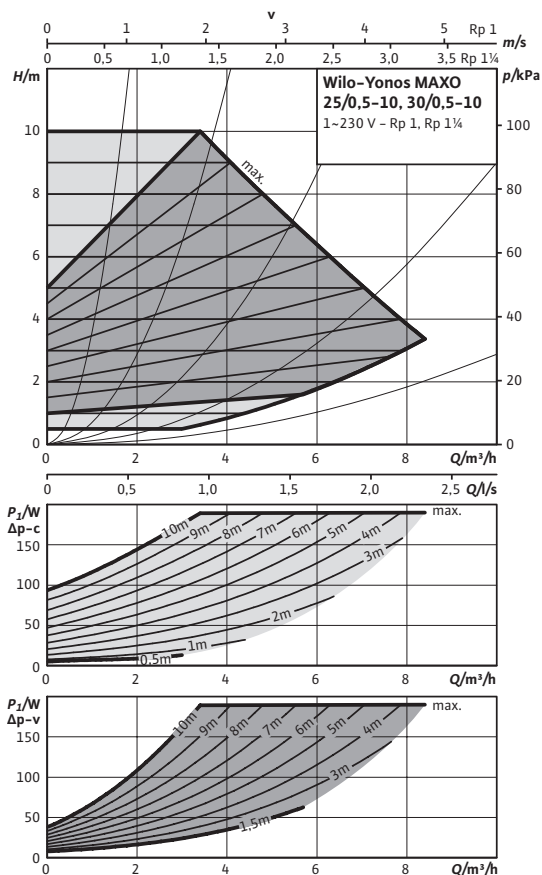


Information for order placements

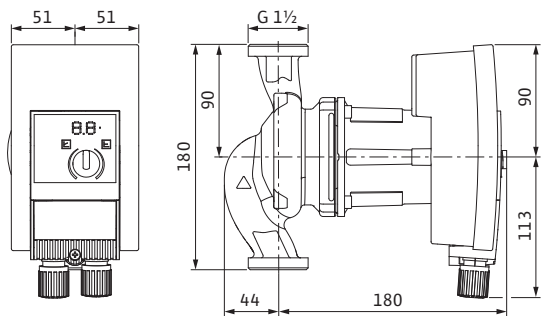
| | | |
|----------------|---------------------|---------|
| Make | Wilo | |
| Type | Yonos MAXO 25/0,5-7 | |
| Art no. | 2120639 | |
| Weight approx. | <i>m</i> | 4.50 kg |

Data sheet: Wilo-Yonos MAXO 25/0,5-10

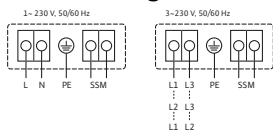
Pump curves



Dimension drawing



Terminal diagram



Collective fault signal
(NC contact according to VDI 3814, load capacity 1 A, 250 V ~)
SSM:
For function, see Wilo catalogue, chapter "Pump management Wilo control, planning guide"

Approved fluids (other fluids on request)

- Heating water (in accordance with VDI 2035)
- Water-glycol mixtures (max. 1:1; above 20% admixture, the pumping data must be checked)

Permitted field of application

| | |
|--|------------------|
| Temperature range at max. ambient temperature +40 °C | -20...+110 °C |
| Maximum permissible operating pressure | P_{max} 10 bar |

Pipe connections

| | |
|---------------------|--------------|
| Threaded pipe union | Rp 1 |
| Thread | G 1 1/2 |
| Overall length | l_o 180 mm |

Motor/electronics

| | |
|-------------------------------|---------------------|
| Energy efficiency index (EEL) | ≤ 0.23 |
| Electromagnetic compatibility | EN 61800-3 |
| Emitted interference | EN 61000-6-3 |
| Interference resistance | EN 61000-6-2 |
| Speed control | Frequency converter |
| Protection class | IP X4D |
| Insulation class | F |
| Mains connection | 1~230 V, 50/60 Hz |
| Nominal motor power | P_2 140 W |
| Speed | n 1000 - 4400 rpm |
| Power consumption | P_1 5 - 190 W |
| Current consumption | I 0.08 - 1.30 A |
| Motor protection | integrated |
| Threaded cable connection | PG M20x1.5 |

Materials

| | |
|--------------|-----------------------------|
| Pump housing | Grey cast iron (EN-GJL-200) |
| Impeller | Plastic (PPE - 30% GF) |
| Pump shaft | Stainless steel (X46Cr13) |
| Bearing | Carbon, metal impregnated |

Minimum suction head at suction port for avoiding cavitation at water pumping temperature

| | |
|--|----------------|
| Minimum suction head at 50 / 95 / 110 °C | 0.5 / 3 / 10 m |
|--|----------------|

01622 882400 /
 info@atacsolutions.com

Data sheet: Wilo-Yonos MAXO 25/0,5-10

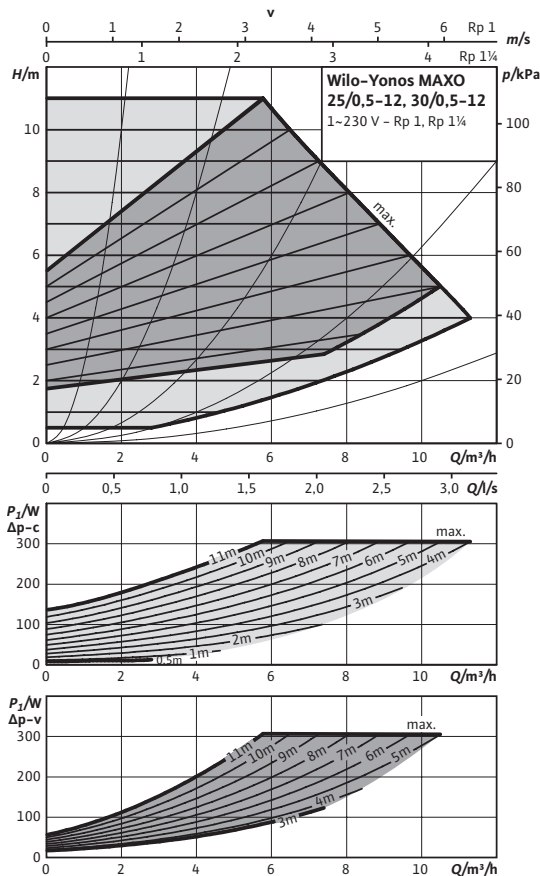


Information for order placements

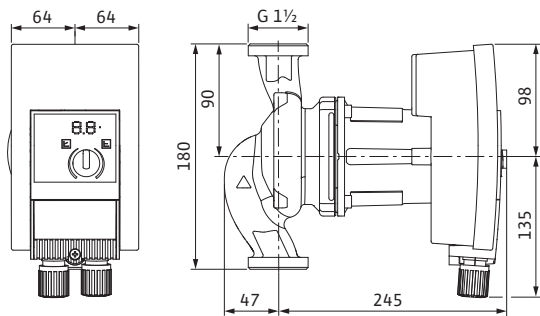
| | | |
|----------------|----------------------|---------|
| Make | Wilo | |
| Type | Yonos MAXO 25/0,5-10 | |
| Art no. | 2120640 | |
| Weight approx. | <i>m</i> | 4.50 kg |

Data sheet: Wilo-Yonos MAXO 25/0,5-12

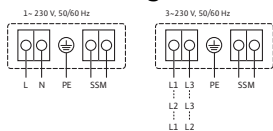
Pump curves



Dimension drawing



Terminal diagram



Collective fault signal
(NC contact according to VDI 3814, load capacity 1 A, 250 V ~)
SSM:
For function, see Wilo catalogue, chapter "Pump management Wilo control, planning guide"

Approved fluids (other fluids on request)

- Heating water (in accordance with VDI 2035)
- Water-glycol mixtures (max. 1:1; above 20% admixture, the pumping data must be checked)

Permitted field of application

| | |
|--|------------------|
| Temperature range at max. ambient temperature +40 °C | -20...+110 °C |
| Maximum permissible operating pressure | P_{max} 10 bar |

Pipe connections

| | |
|---------------------|--------------|
| Threaded pipe union | Rp 1 |
| Thread | G 1 1/2 |
| Overall length | l_o 180 mm |

Motor/electronics

| | |
|-------------------------------|---------------------|
| Energy efficiency index (EEI) | ≤ 0.23 |
| Electromagnetic compatibility | EN 61800-3 |
| Emitted interference | EN 61000-6-3 |
| Interference resistance | EN 61000-6-2 |
| Speed control | Frequency converter |
| Protection class | IP X4D |
| Insulation class | F |
| Mains connection | 1~230 V, 50/60 Hz |
| Nominal motor power | P_2 200 W |
| Speed | n 1000 - 4800 rpm |
| Power consumption | P_1 10 - 305 W |
| Current consumption | I 0.15 - 1.33 A |
| Motor protection | integrated |
| Threaded cable connection | PG M20x1.5 |

Materials

| | |
|--------------|-----------------------------|
| Pump housing | Grey cast iron (EN-GJL-200) |
| Impeller | Plastic (PPE - 30% GF) |
| Pump shaft | Stainless steel (X46Cr13) |
| Bearing | Carbon, metal impregnated |

Minimum suction head at suction port for avoiding cavitation at water pumping temperature

| | |
|--|----------------|
| Minimum suction head at 50 / 95 / 110 °C | 0.5 / 3 / 10 m |
|--|----------------|

01622 882400 /
info@atacsolutions.com

Data sheet: Wilo-Yonos MAXO 25/0,5-12



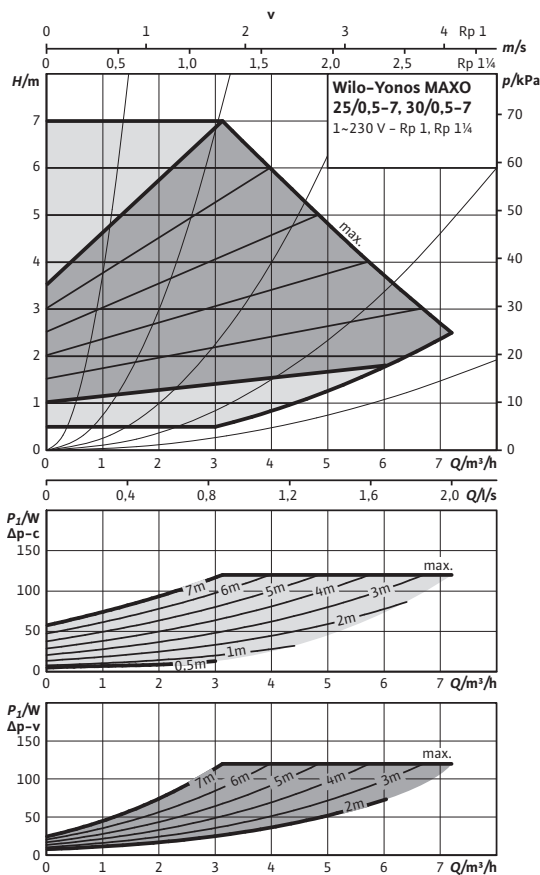
APPLIES TO
EUROPEAN
DIRECTIVE
FOR ENERGY
RELATED
PRODUCTS

Information for order placements

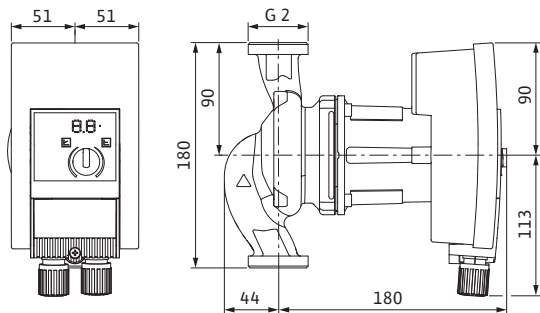
| | | |
|----------------|----------------------|---------|
| Make | Wilo | |
| Type | Yonos MAXO 25/0,5-12 | |
| Art no. | 2120641 | |
| Weight approx. | <i>m</i> | 5.30 kg |

Data sheet: Wilo-Yonos MAXO 30/0,5-7

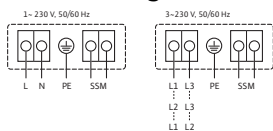
Pump curves



Dimension drawing



Terminal diagram



SSM: Collective fault signal (NC contact according to VDI 3814, load capacity 1 A, 250 V ~)
For function, see Wilo catalogue, chapter "Pump management Wilo control, planning guide"

Approved fluids (other fluids on request)

- Heating water (in accordance with VDI 2035)
- Water-glycol mixtures (max. 1:1; above 20% admixture, the pumping data must be checked)

Permitted field of application

| | |
|--|------------------|
| Temperature range at max. ambient temperature +40 °C | -20...+110 °C |
| Maximum permissible operating pressure | P_{max} 10 bar |

Pipe connections

| | |
|---------------------|--------------|
| Threaded pipe union | Rp 1¼ |
| Thread | G 2 |
| Overall length | l_o 180 mm |

Motor/electronics

| | |
|-------------------------------|---------------------|
| Energy efficiency index (EEI) | ≤ 0.23 |
| Electromagnetic compatibility | EN 61800-3 |
| Emitted interference | EN 61000-6-3 |
| Interference resistance | EN 61000-6-2 |
| Speed control | Frequency converter |
| Protection class | IP X4D |
| Insulation class | F |
| Mains connection | 1~230 V, 50/60 Hz |
| Nominal motor power | P_2 90 W |
| Speed | n 1000 - 3700 rpm |
| Power consumption | P_1 5 - 120 W |
| Current consumption | I 0.08 - 0.90 A |
| Motor protection | integrated |
| Threaded cable connection | PG M20x1.5 |

Materials

| | |
|--------------|-----------------------------|
| Pump housing | Grey cast iron (EN-GJL-200) |
| Impeller | Plastic (PPE - 30% GF) |
| Pump shaft | Stainless steel (X46Cr13) |
| Bearing | Carbon, metal impregnated |

Minimum suction head at suction port for avoiding cavitation at water pumping temperature

| | |
|--|----------------|
| Minimum suction head at 50 / 95 / 110 °C | 0.5 / 3 / 10 m |
|--|----------------|

01622 882400 /
 info@atacsolutions.com

Data sheet: Wilo-Yonos MAXO 30/0,5-7

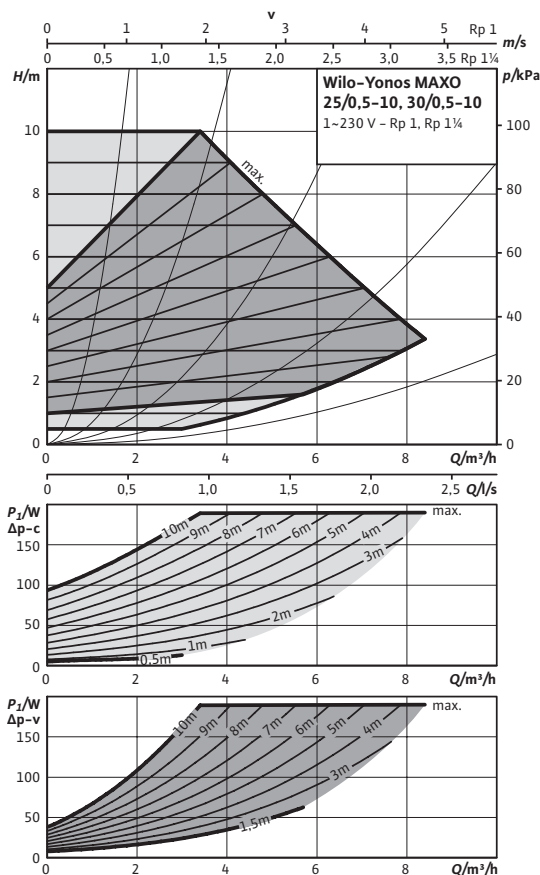


Information for order placements

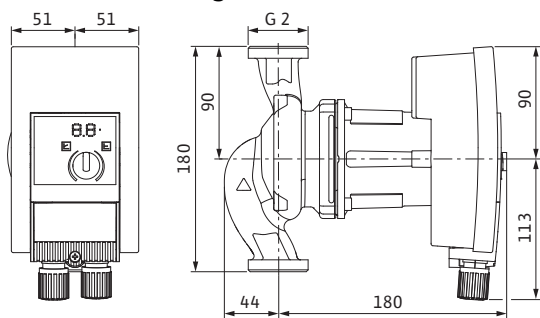
| | | |
|----------------|---------------------|---------|
| Make | Wilo | |
| Type | Yonos MAXO 30/0,5-7 | |
| Art no. | 2120642 | |
| Weight approx. | <i>m</i> | 4.60 kg |

Data sheet: Wilo-Yonos MAXO 30/0,5-10

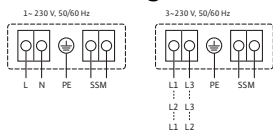
Pump curves



Dimension drawing



Terminal diagram



Collective fault signal
(NC contact according to VDI 3814, load capacity 1 A, 250 V ~)
SSM:
For function, see Wilo catalogue, chapter "Pump management Wilo control, planning guide"

Approved fluids (other fluids on request)

- Heating water (in accordance with VDI 2035)
- Water-glycol mixtures (max. 1:1; above 20% admixture, the pumping data must be checked)

Permitted field of application

| | |
|--|------------------|
| Temperature range at max. ambient temperature +40 °C | -20...+110 °C |
| Maximum permissible operating pressure | P_{max} 10 bar |

Pipe connections

| | |
|---------------------|--------------|
| Threaded pipe union | Rp 1¼ |
| Thread | G 2 |
| Overall length | l_o 180 mm |

Motor/electronics

| | |
|-------------------------------|---------------------|
| Energy efficiency index (EEl) | ≤ 0.23 |
| Electromagnetic compatibility | EN 61800-3 |
| Emitted interference | EN 61000-6-3 |
| Interference resistance | EN 61000-6-2 |
| Speed control | Frequency converter |
| Protection class | IP X4D |
| Insulation class | F |
| Mains connection | 1~230 V, 50/60 Hz |
| Nominal motor power | P_2 140 W |
| Speed | n 1000 - 4400 rpm |
| Power consumption | P_1 5 - 190 W |
| Current consumption | I 0.08 - 1.30 A |
| Motor protection | integrated |
| Threaded cable connection | PG M20x1.5 |

Materials

| | |
|--------------|-----------------------------|
| Pump housing | Grey cast iron (EN-GJL-200) |
| Impeller | Plastic (PPE - 30% GF) |
| Pump shaft | Stainless steel (X46Cr13) |
| Bearing | Carbon, metal impregnated |

Minimum suction head at suction port for avoiding cavitation at water pumping temperature

| | |
|--|----------------|
| Minimum suction head at 50 / 95 / 110 °C | 0.5 / 3 / 10 m |
|--|----------------|

01622 882400 /
 info@atacsolutions.com

Data sheet: Wilo-Yonos MAXO 30/0,5-10

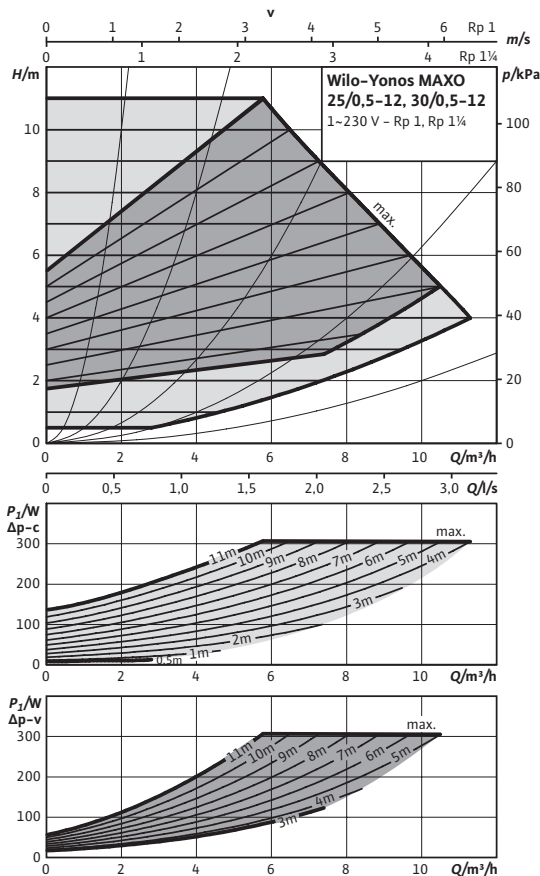


Information for order placements

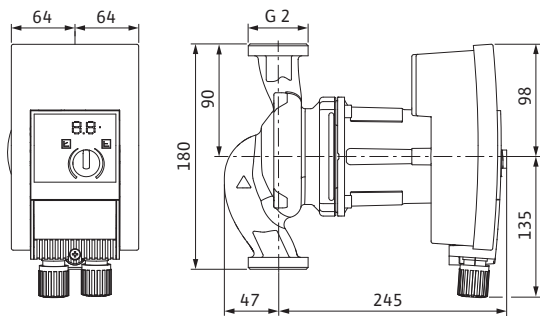
| | | |
|----------------|----------------------|---------|
| Make | Wilo | |
| Type | Yonos MAXO 30/0,5-10 | |
| Art no. | 2120643 | |
| Weight approx. | <i>m</i> | 4.60 kg |

Data sheet: Wilo-Yonos MAXO 30/0,5-12

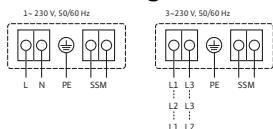
Pump curves



Dimension drawing



Terminal diagram



Collective fault signal
(NC contact according to VDI 3814, load capacity 1 A, 250 V ~)
SSM:
For function, see Wilo catalogue, chapter "Pump management Wilo control, planning guide"

Approved fluids (other fluids on request)

- Heating water (in accordance with VDI 2035)
- Water-glycol mixtures (max. 1:1; above 20% admixture, the pumping data must be checked)

Permitted field of application

| | |
|--|------------------|
| Temperature range at max. ambient temperature +40 °C | -20...+110 °C |
| Maximum permissible operating pressure | P_{max} 10 bar |

Pipe connections

| | |
|---------------------|--------------|
| Threaded pipe union | Rp 1½ |
| Thread | G 2 |
| Overall length | l_o 180 mm |

Motor/electronics

| | |
|-------------------------------|---------------------|
| Energy efficiency index (EEI) | ≤ 0.23 |
| Electromagnetic compatibility | EN 61800-3 |
| Emitted interference | EN 61000-6-3 |
| Interference resistance | EN 61000-6-2 |
| Speed control | Frequency converter |
| Protection class | IP X4D |
| Insulation class | F |
| Mains connection | 1~230 V, 50/60 Hz |
| Nominal motor power | P_2 200 W |
| Speed | n 1000 - 4800 rpm |
| Power consumption | P_1 10 - 305 W |
| Current consumption | I 0.15 - 1.33 A |
| Motor protection | integrated |
| Threaded cable connection | PG M20x1.5 |

Materials

| | |
|--------------|-----------------------------|
| Pump housing | Grey cast iron (EN-GJL-200) |
| Impeller | Plastic (PPE - 30% GF) |
| Pump shaft | Stainless steel (X46Cr13) |
| Bearing | Carbon, metal impregnated |

Minimum suction head at suction port for avoiding cavitation at water pumping temperature

| | |
|--|----------------|
| Minimum suction head at 50 / 95 / 110 °C | 0.5 / 3 / 10 m |
|--|----------------|

01622 882400 /
 info@atacsolutions.com

Data sheet: Wilo-Yonos MAXO 30/0,5-12

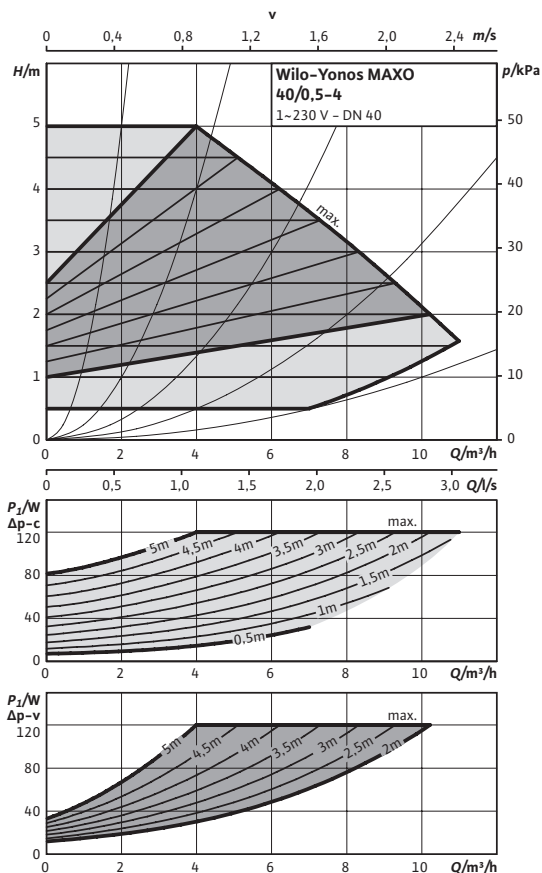


Information for order placements

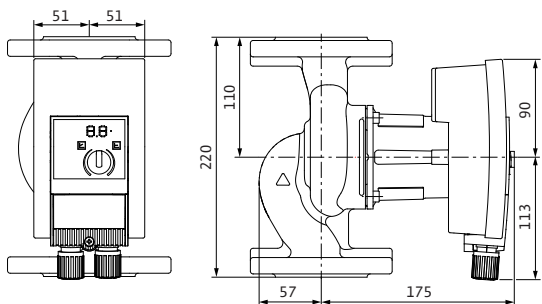
| | | |
|----------------|----------------------|---------|
| Make | Wilo | |
| Type | Yonos MAXO 30/0,5-12 | |
| Art no. | 2120644 | |
| Weight approx. | <i>m</i> | 5.40 kg |

Data sheet: Wilo-Yonos MAXO 40/0,5-4

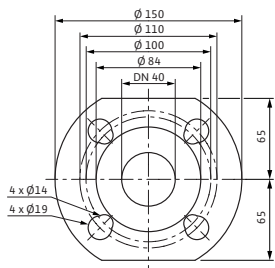
Pump curves



Dimension drawing



Dimension drawing, flange



Approved fluids (other fluids on request)

- Heating water (in accordance with VDI 2035)
- Water-glycol mixtures (max. 1:1; above 20% admixture, the pumping data must be checked)

Permitted field of application

| | |
|--|--------------------|
| Temperature range at max. ambient temperature +40 °C | -20...+110 °C |
| Maximum permissible operating pressure | P_{max} 6/10 bar |

Pipe connections

| | |
|-------------------------|---|
| Flange | Combination flange PN6/10 (PN 16 flange according to EN 1092-2) |
| Nominal flange diameter | DN 40 |
| Overall length | l_o 220 mm |

Motor/electronics

| | |
|-------------------------------|---------------------|
| Energy efficiency index (EEI) | ≤ 0.23 |
| Electromagnetic compatibility | EN 61800-3 |
| Emitted interference | EN 61000-6-3 |
| Interference resistance | EN 61000-6-2 |
| Speed control | Frequency converter |
| Protection class | IP X4D |
| Insulation class | F |
| Mains connection | 1~230 V, 50/60 Hz |
| Nominal motor power | P_2 90 W |
| Speed | n 1200 - 3700 rpm |
| Power consumption | P_1 7 - 120 W |
| Current consumption | I 0.09 - 0.90 A |
| Motor protection | integrated |
| Threaded cable connection | PG M20x1.5 |

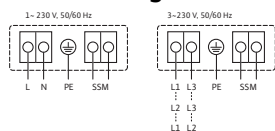
Materials

| | |
|--------------|-----------------------------|
| Pump housing | Grey cast iron (EN-GJL-250) |
| Impeller | Plastic (PPS - 40% GF) |
| Pump shaft | Stainless steel (X46Cr13) |
| Bearing | Carbon, metal impregnated |

Minimum suction head at suction port for avoiding cavitation at water pumping temperature

Data sheet: Wilo-Yonos MAXO 40/0,5-4

Terminal diagram



Collective fault signal
(NC contact according to VDI 3814, load capacity 1 A,
250 V ~)
For function, see Wilo catalogue, chapter "Pump
management Wilo control, planning guide"

SSM:

Minimum suction head at 50 / 95 / 110 °C 0.5 / 3 / 10 m

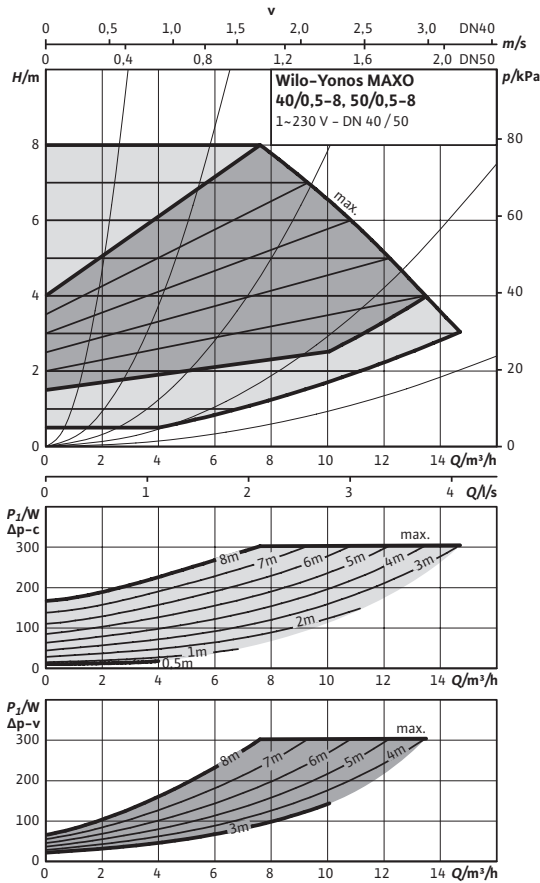
Information for order placements

| | |
|----------------|---------------------|
| Make | Wilo |
| Type | Yonos MAXO 40/0,5-4 |
| Art no. | 2120645 |
| Weight approx. | <i>m</i> 8.60 kg |

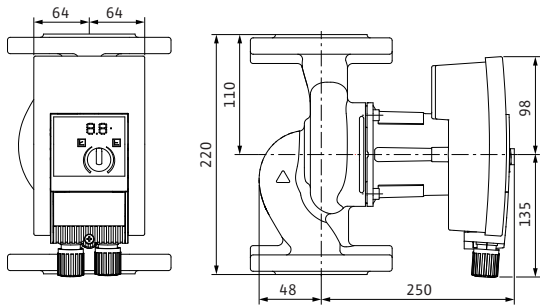


Data sheet: Wilo-Yonos MAXO 40/0,5-8

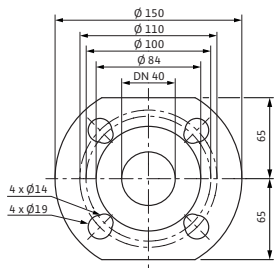
Pump curves



Dimension drawing



Dimension drawing, flange



Approved fluids (other fluids on request)

Heating water (in accordance with VDI 2035)

Water-glycol mixtures (max. 1:1; above 20% admixture, the pumping data must be checked)

Permitted field of application

Temperature range at max. ambient temperature +40 °C -20...+110 °C

Maximum permissible operating pressure P_{max} 6/10 bar

Pipe connections

Flange Combination flange PN6/10 (PN 16 flange according to EN 1092-2)

Nominal flange diameter DN 40

Overall length l_o 220 mm

Motor/electronics

Energy efficiency index (EEI) ≤ 0.23

Electromagnetic compatibility EN 61800-3

Emitted interference EN 61000-6-3

Interference resistance EN 61000-6-2

Speed control Frequency converter

Protection class IP X4D

Insulation class F

Mains connection 1~230 V, 50/60 Hz

Nominal motor power P_2 200 W

Speed n 1200 - 4800 rpm

Power consumption P_1 10 - 305 W

Current consumption I 0.15 - 1.33 A

Motor protection integrated

Threaded cable connection PG M20x1.5

Materials

Pump housing Grey cast iron (EN-GJL-250)

Impeller Plastic (PPS - 40% GF)

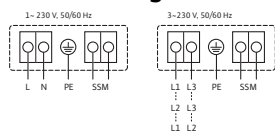
Pump shaft Stainless steel (X46Cr13)

Bearing Carbon, metal impregnated

Minimum suction head at suction port for avoiding cavitation at water pumping temperature

Data sheet: Wilo-Yonos MAXO 40/0,5-8

Terminal diagram



Collective fault signal
(NC contact according to VDI 3814, load capacity 1 A,
250 V ~)
For function, see Wilo catalogue, chapter "Pump
management Wilo control, planning guide"

SSM:

Minimum suction head at 50 / 95 / 110 °C 0.5 / 3 / 10 m

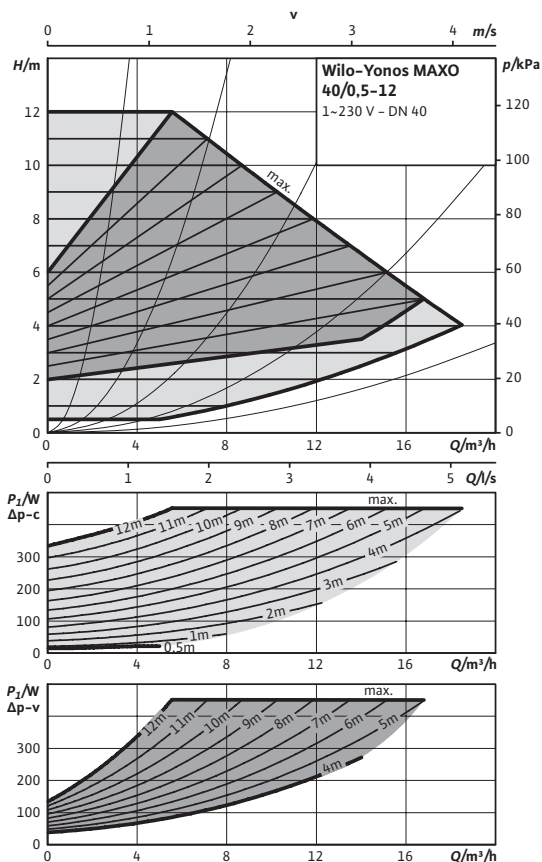
Information for order placements

| | |
|----------------|---------------------|
| Make | Wilo |
| Type | Yonos MAXO 40/0,5-8 |
| Art no. | 2120646 |
| Weight approx. | <i>m</i> 9.20 kg |

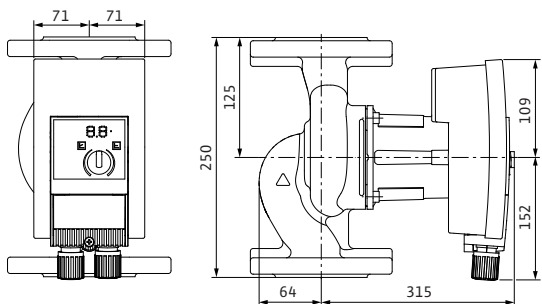


Data sheet: Wilo-Yonos MAXO 40/0,5-12

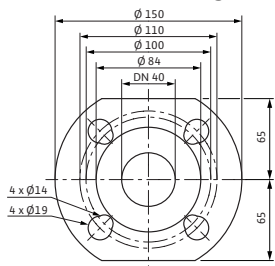
Pump curves



Dimension drawing



Dimension drawing, flange



Approved fluids (other fluids on request)

- Heating water (in accordance with VDI 2035)
- Water-glycol mixtures (max. 1:1; above 20% admixture, the pumping data must be checked)

Permitted field of application

| | |
|--|--------------------|
| Temperature range at max. ambient temperature +40 °C | -20...+110 °C |
| Maximum permissible operating pressure | P_{max} 6/10 bar |

Pipe connections

| | |
|-------------------------|---|
| Flange | Combination flange PN6/10 (PN 16 flange according to EN 1092-2) |
| Nominal flange diameter | DN 40 |
| Overall length | l_o 250 mm |

Motor/electronics

| | |
|-------------------------------|---------------------|
| Energy efficiency index (EEI) | ≤ 0.23 |
| Electromagnetic compatibility | EN 61800-3 |
| Emitted interference | EN 61000-6-3 |
| Interference resistance | EN 61000-6-2 |
| Speed control | Frequency converter |
| Protection class | IP X4D |
| Insulation class | F |
| Mains connection | 1~230 V, 50/60 Hz |
| Nominal motor power | P_2 350 W |
| Speed | n 950 – 4500 rpm |
| Power consumption | P_1 15 – 450 W |
| Current consumption | I 0.17 – 2.00 A |
| Motor protection | integrated |
| Threaded cable connection | PG M20x1.5 |

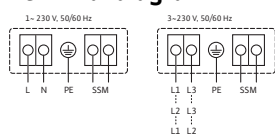
Materials

| | |
|--------------|-----------------------------|
| Pump housing | Grey cast iron (EN-GJL-250) |
| Impeller | Plastic (PPS – 40% GF) |
| Pump shaft | Stainless steel (X46Cr13) |
| Bearing | Carbon, metal impregnated |

Minimum suction head at suction port for avoiding cavitation at water pumping temperature

Data sheet: Wilo-Yonos MAXO 40/0,5-12

Terminal diagram



Collective fault signal
(NC contact according to VDI 3814, load capacity 1 A,
250 V ~)
For function, see Wilo catalogue, chapter "Pump
management Wilo control, planning guide"

SSM:

Minimum suction head at 50 / 95 / 110 °C 0.5 / 3 / 10 m

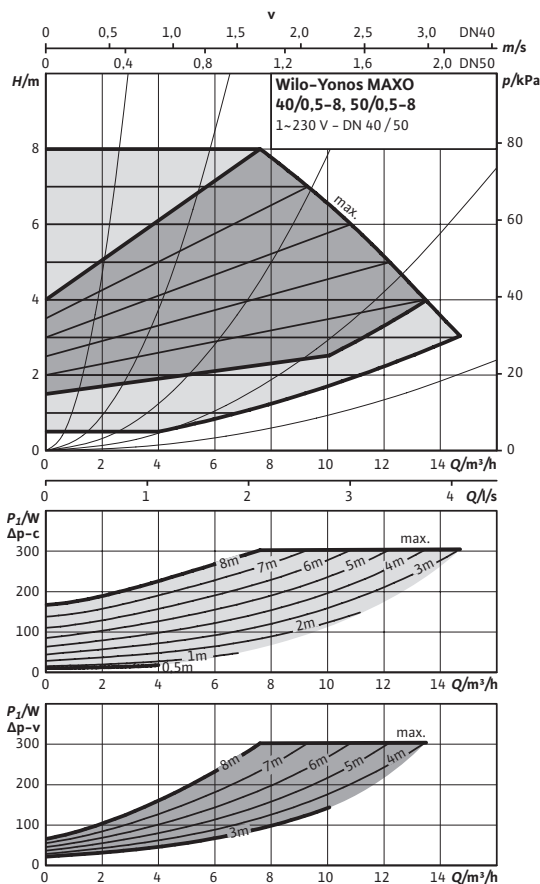
Information for order placements

| | |
|----------------|----------------------|
| Make | Wilo |
| Type | Yonos MAXO 40/0,5-12 |
| Art no. | 2120647 |
| Weight approx. | <i>m</i> 13 kg |

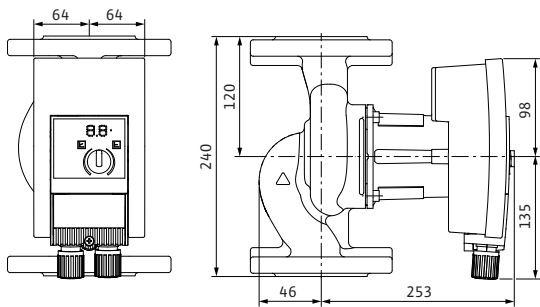


Data sheet: Wilo-Yonos MAXO 50/0,5-8

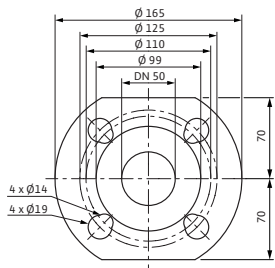
Pump curves



Dimension drawing



Dimension drawing, flange



Approved fluids (other fluids on request)

Heating water (in accordance with VDI 2035)

Water-glycol mixtures (max. 1:1; above 20% admixture, the pumping data must be checked)

Permitted field of application

Temperature range at max. ambient temperature +40 °C: -20...+110 °C

Maximum permissible operating pressure: P_{max} 6/10 bar

Pipe connections

Flange: Combination flange PN6/10 (PN 16 flange according to EN 1092-2)

Nominal flange diameter: DN 50

Overall length: l_o 240 mm

Motor/electronics

Energy efficiency index (EEI) ≤ 0.23

Electromagnetic compatibility: EN 61800-3

Emitted interference: EN 61000-6-3

Interference resistance: EN 61000-6-2

Speed control: Frequency converter

Protection class: IP X4D

Insulation class: F

Mains connection: 1~230 V, 50/60 Hz

Nominal motor power: P_2 200 W

Speed: n 1200 - 4800 rpm

Power consumption: P_1 10 - 305 W

Current consumption: I 0.15 - 1.33 A

Motor protection: integrated

Threaded cable connection: PG M20x1.5

Materials

Pump housing: Grey cast iron (EN-GJL-250)

Impeller: Plastic (PPS - 40% GF)

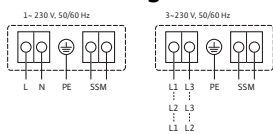
Pump shaft: Stainless steel (X46Cr13)

Bearing: Carbon, metal impregnated

Minimum suction head at suction port for avoiding cavitation at water pumping temperature

Data sheet: Wilo-Yonos MAXO 50/0,5-8

Terminal diagram



Collective fault signal
(NC contact according to VDI 3814, load capacity 1 A,
250 V ~)
For function, see Wilo catalogue, chapter "Pump
management Wilo control, planning guide"

SSM:

Minimum suction head at 50 / 95 / 110 °C 0.5 / 3 / 10 m

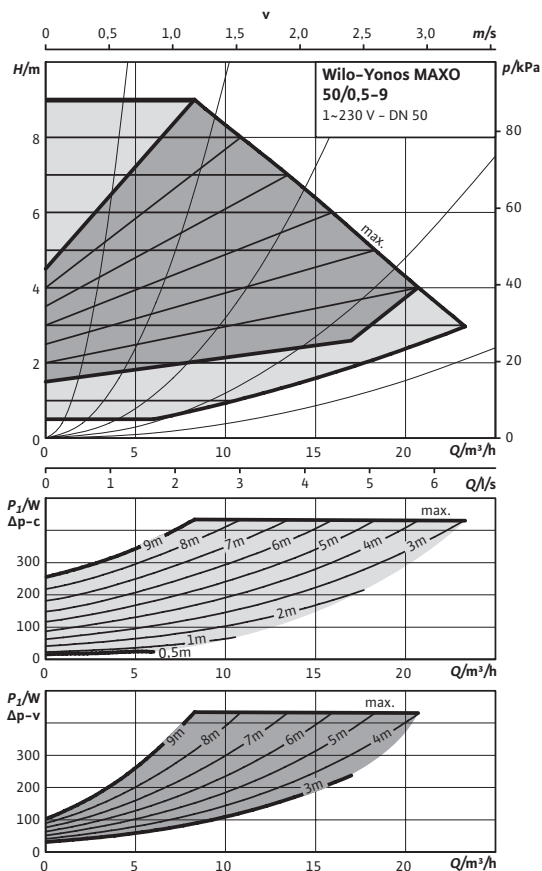
Information for order placements

| | |
|----------------|---------------------|
| Make | Wilo |
| Type | Yonos MAXO 50/0,5-8 |
| Art no. | 2120649 |
| Weight approx. | <i>m</i> 10.50 kg |

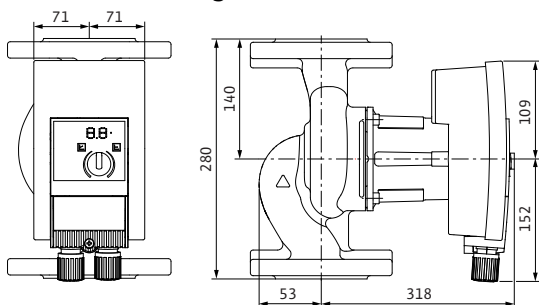


Data sheet: Wilo-Yonos MAXO 50/0,5-9

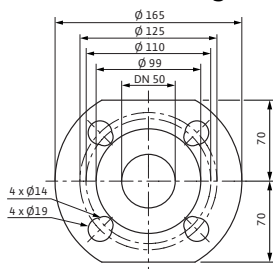
Pump curves



Dimension drawing



Dimension drawing, flange



Approved fluids (other fluids on request)

- Heating water (in accordance with VDI 2035)
- Water-glycol mixtures (max. 1:1; above 20% admixture, the pumping data must be checked)

Permitted field of application

| | |
|--|--------------------|
| Temperature range at max. ambient temperature +40 °C | -20...+110 °C |
| Maximum permissible operating pressure | P_{max} 6/10 bar |

Pipe connections

| | |
|-------------------------|---|
| Flange | Combination flange PN6/10 (PN 16 flange according to EN 1092-2) |
| Nominal flange diameter | DN 50 |
| Overall length | l_o 280 mm |

Motor/electronics

| | |
|-------------------------------|---------------------|
| Energy efficiency index (EEI) | ≤ 0.23 |
| Electromagnetic compatibility | EN 61800-3 |
| Emitted interference | EN 61000-6-3 |
| Interference resistance | EN 61000-6-2 |
| Speed control | Frequency converter |
| Protection class | IP X4D |
| Insulation class | F |
| Mains connection | 1~230 V, 50/60 Hz |
| Nominal motor power | P_2 350 W |
| Speed | n 950 - 4000 rpm |
| Power consumption | P_1 15 - 430 W |
| Current consumption | I 0.17 - 1.88 A |
| Motor protection | integrated |
| Threaded cable connection | PG M20x1.5 |

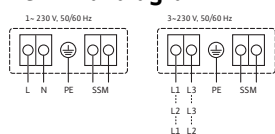
Materials

| | |
|--------------|-----------------------------|
| Pump housing | Grey cast iron (EN-GJL-250) |
| Impeller | Plastic (PPS - 40% GF) |
| Pump shaft | Stainless steel (X46Cr13) |
| Bearing | Carbon, metal impregnated |

Minimum suction head at suction port for avoiding cavitation at water pumping temperature

Data sheet: Wilo-Yonos MAXO 50/0,5-9

Terminal diagram



Collective fault signal
(NC contact according to VDI 3814, load capacity 1 A,
250 V ~)
For function, see Wilo catalogue, chapter "Pump
management Wilo control, planning guide"

SSM:

Minimum suction head at 50 / 95 / 110 °C 0.5 / 3 / 10 m

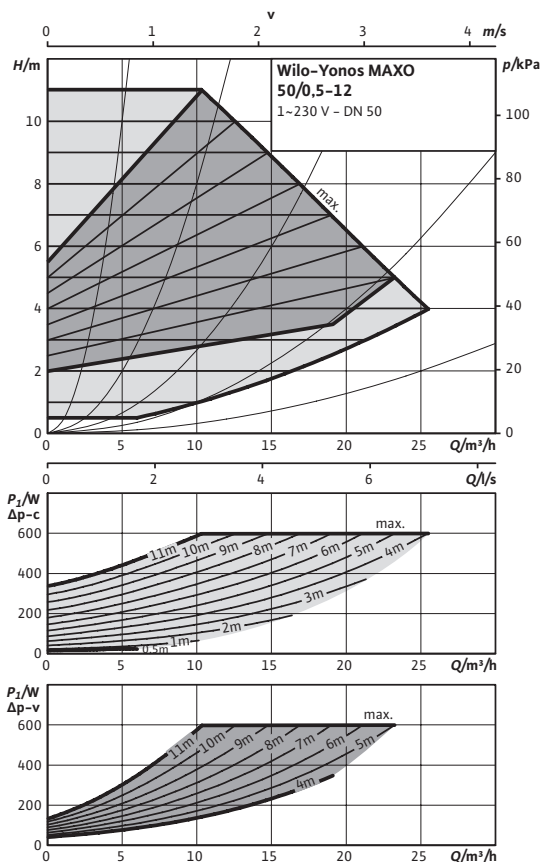
Information for order placements

| | |
|----------------|---------------------|
| Make | Wilo |
| Type | Yonos MAXO 50/0,5-9 |
| Art no. | 2120650 |
| Weight approx. | <i>m</i> 14.20 kg |

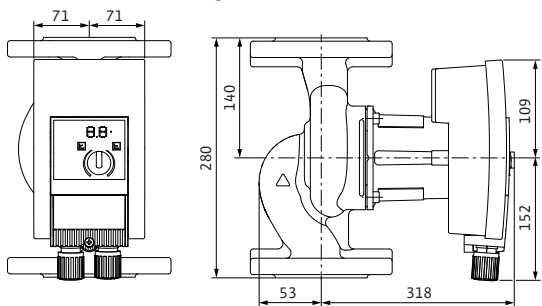


Data sheet: Wilo-Yonos MAXO 50/0,5-12

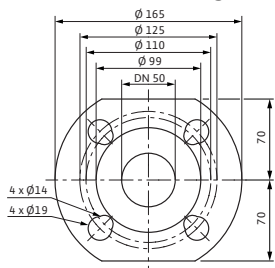
Pump curves



Dimension drawing



Dimension drawing, flange



Approved fluids (other fluids on request)

- Heating water (in accordance with VDI 2035)
- Water-glycol mixtures (max. 1:1; above 20% admixture, the pumping data must be checked)

Permitted field of application

| | |
|--|--------------------|
| Temperature range at max. ambient temperature +40 °C | -20...+110 °C |
| Maximum permissible operating pressure | P_{max} 6/10 bar |

Pipe connections

| | |
|-------------------------|---|
| Flange | Combination flange PN6/10 (PN 16 flange according to EN 1092-2) |
| Nominal flange diameter | DN 50 |
| Overall length | l_o 280 mm |

Motor/electronics

| | |
|-------------------------------|---------------------|
| Energy efficiency index (EEI) | ≤ 0.23 |
| Electromagnetic compatibility | EN 61800-3 |
| Emitted interference | EN 61000-6-3 |
| Interference resistance | EN 61000-6-2 |
| Speed control | Frequency converter |
| Protection class | IP X4D |
| Insulation class | F |
| Mains connection | 1~230 V, 50/60 Hz |
| Nominal motor power | P_2 500 W |
| Speed | n 950 - 4400 rpm |
| Power consumption | P_1 15 - 600 W |
| Current consumption | I 0.17 - 2.65 A |
| Motor protection | integrated |
| Threaded cable connection | PG M20x1.5 |

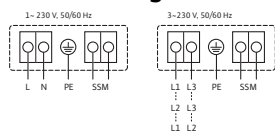
Materials

| | |
|--------------|-----------------------------|
| Pump housing | Grey cast iron (EN-GJL-250) |
| Impeller | Plastic (PPS - 40% GF) |
| Pump shaft | Stainless steel (X46Cr13) |
| Bearing | Carbon, metal impregnated |

Minimum suction head at suction port for avoiding cavitation at water pumping temperature

Data sheet: Wilo-Yonos MAXO 50/0,5-12

Terminal diagram



Collective fault signal
(NC contact according to VDI 3814, load capacity 1 A, 250 V ~)
For function, see Wilo catalogue, chapter "Pump management Wilo control, planning guide"

SSM:

Minimum suction head at 50 / 95 / 110 °C 0.5 / 3 / 10 m

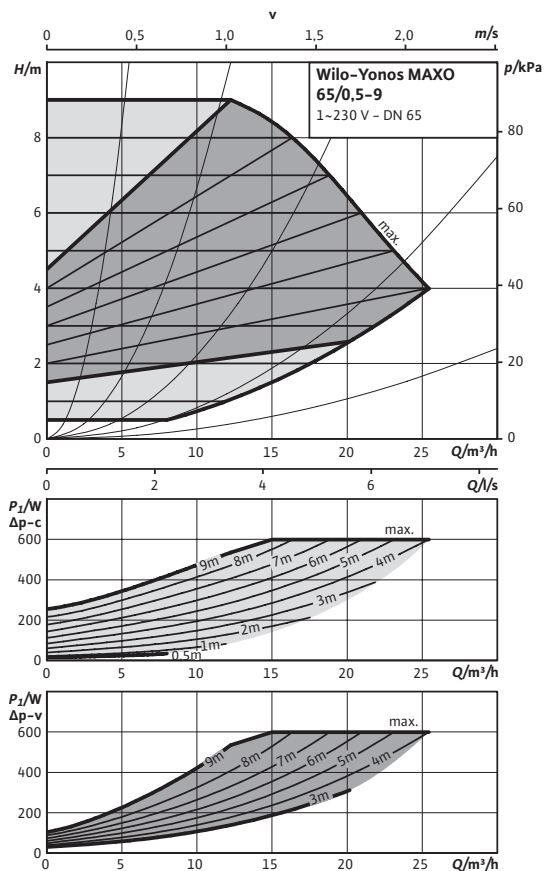
Information for order placements

| | |
|----------------|----------------------|
| Make | Wilo |
| Type | Yonos MAXO 50/0,5-12 |
| Art no. | 2120651 |
| Weight approx. | <i>m</i> 14.20 kg |

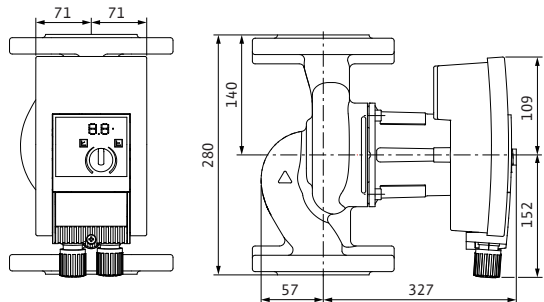


Data sheet: Wilo-Yonos MAXO 65/0,5-9

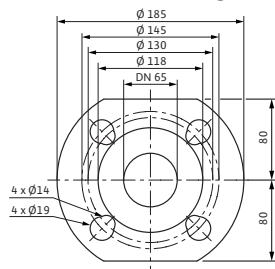
Pump curves



Dimension drawing



Dimension drawing, flange



Approved fluids (other fluids on request)

Heating water (in accordance with VDI 2035)

Water-glycol mixtures (max. 1:1; above 20% admixture, the pumping data must be checked)

Permitted field of application

Temperature range at max. ambient temperature +40 °C: -20...+110 °C

Maximum permissible operating pressure: P_{max} 6/10 bar

Pipe connections

Flange: Combination flange PN6/10 (PN 16 flange according to EN 1092-2)

Nominal flange diameter: DN 65

Overall length: l_o 280 mm

Motor/electronics

Energy efficiency index (EEI) ≤ 0.23

Electromagnetic compatibility: EN 61800-3

Emitted interference: EN 61000-6-3

Interference resistance: EN 61000-6-2

Speed control: Frequency converter

Protection class: IP X4D

Insulation class: F

Mains connection: 1~230 V, 50/60 Hz

Nominal motor power: P_2 500 W

Speed: n 950 - 4000 rpm

Power consumption: P_1 15 - 600 W

Current consumption: I 0.17 - 2.65 A

Motor protection: integrated

Threaded cable connection: PG M20x1.5

Materials

Pump housing: Grey cast iron (EN-GJL-250)

Impeller: Plastic (PPS - 40% GF)

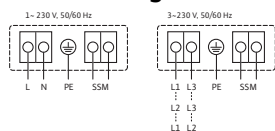
Pump shaft: Stainless steel (X46Cr13)

Bearing: Carbon, metal impregnated

Minimum suction head at suction port for avoiding cavitation at water pumping temperature

Data sheet: Wilo-Yonos MAXO 65/0,5-9

Terminal diagram



Collective fault signal
(NC contact according to VDI 3814, load capacity 1 A,
250 V ~)
For function, see Wilo catalogue, chapter "Pump
management Wilo control, planning guide"

SSM:

Minimum suction head at 50 / 95 / 110 °C 0.5 / 3 / 10 m

Information for order placements

| | |
|----------------|---------------------|
| Make | Wilo |
| Type | Yonos MAXO 65/0,5-9 |
| Art no. | 2120653 |
| Weight approx. | <i>m</i> 16.10 kg |

