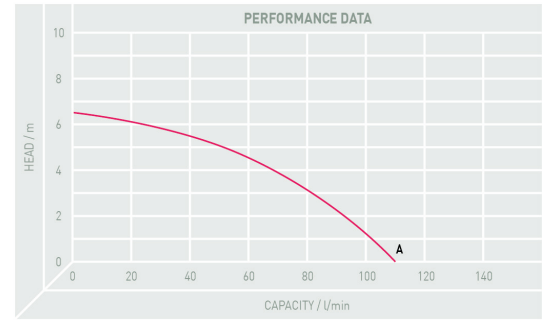


Submersible Drainage Pump for Clean Water

The T-T 100 is a submersible drainage pump for clean water, with non abrasive particles, (max. solid bodies 9mm). It has a stainless steel body, suction grid, motor casing and pump shaft and is ideal for domestic and industrial applications.

Features:

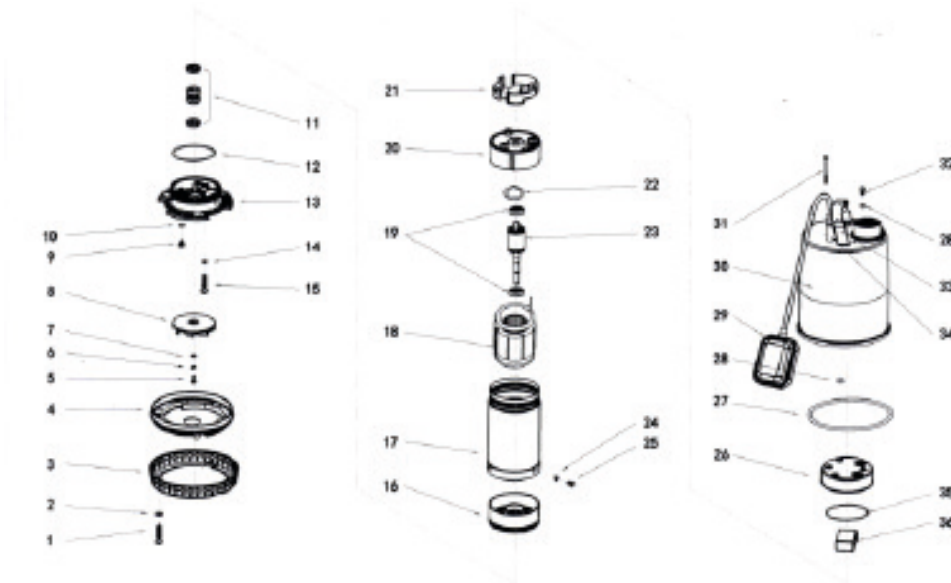
- Stainless steel construction
- Lipseal
- Technopolymer impeller
- Submersion depth: Max 5m
- Mechanical seal
- Liquid temperature up to 35°C
- IP68 Motor
- Automatic as standard



TECHNICAL SPECIFICATION

PUMP TYPE	PRODUCT CODE	CURVE	OUTPUT		DISCHARGE		MAXIMUM		FREE PASSAGE mm	CABLE	WEIGHT kg
			AMP	kW	mm	inch	HEAD M	CAPACITY LPM			
T-T 100 230V/1Ph	PW/TT100	A	1	0.15	32	1¼	6.5	110	9	5	7

PARTS AND MATERIAL LISTS



No.	PART	QTY	No.	PART	QTY	No.	PART	QTY	No.	PART	QTY
1	Screw	3	10	O Ring	1	19	Bearing	2	28	O Ring	4
2	Washer	3	11	Mechanical Seal	1	20	Upper Bearing Bracket	1	29	Float Switch	1
3	Strainer	1	12	O Ring	1	21	Capacitor Box	1	30	Pump Frame	1
4	Diffuser	1	13	Oil Chamber Sealing Cover	1	22	Wave form washer	1	31	Screw	3
5	Screw	1	14	O Ring	2	23	Rotor	1	32	Screw	1
6	Spring Washer	1	15	Screw	2	24	Positioning Pin	3	33	Handle	1
7	Washer	1	16	Lower Bearing Bracket	1	25	Screw	3	34	Cable Gland	2
8	Impeller	1	17	Motor Frame	1	26	Upper motor cover	1	35	O Ring	1
9	Oil Plug Screw	1	18	Stator	1	27	O Ring	1	36	Capacitor	1

TECHNICAL SPECIFICATION

