

SUBMERSIBLE PUMP RANGE FOR CLEAN WATER AND ASSOCIATED PRODUCTS.

OPTION ONE - PuddlePal, PumpPal & LevelPal STANDARD LEVEL CONTROL OPTION

INCORPORATING:

- The PuddlePal® range, a versatile, portable, submersible pump for clear water. This pump features the ability to pump down to 1mm, therefore ideal for removing water from flat surfaces such as floors and flat-roofs.
- PumpPal is a range of versatile units offering a wide variety of functions such as 1Ph motor control, dry running indication, protection or water detection to name but a few.
- Level detection via our LevelPal.



PuddlePal 400, PumpPal & LevelPal - **£650.00** list

PuddlePal 750, PumpPal & LevelPal - **£770.00** list

OPTION TWO - PuddlePal, PumpPal Pro & LevelPal HIGH LEVEL ALARM WARNING SYSTEM

INCORPORATING:

- The PuddlePal® range, a versatile, portable, submersible pump for clear water. This pump features the ability to pump down to 1mm, therefore ideal for removing water from flat surfaces such as floors and flat-roofs.
- PumpPal Pro incorporates all the features of PumpPal with the provision for a 2nd level detector for high level alarm, complete with volt free contacts for remote signalling to BMS (building management system).
- Level detection via our LevelPal.



PuddlePal 400, PumpPal Pro and LevelPal x 2 - **£735.00** list

PuddlePal 750, PumpPal Pro and LevelPal x 2 - **£855.00** list

PUDDLEPAL

TECHNICAL INFORMATION:

- Compact, lightweight design
- Stainless steel outer casing
- Urethane impeller
- Autoreset thermal protector
- Double mechanical seal
- 6mm solids handling
- 0.4 - 0.75kW output options available
- 50mm discharge
- Interchangeable major components between the Trencher®, Liberator® and PuddlePal® range.



APPLICATION AREAS:



*Please note: additional cost for the 316 stainless steel models.

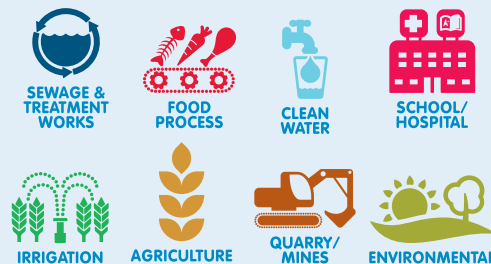
PUMPPAL/ PUMPPAL PRO & LEVELPAL



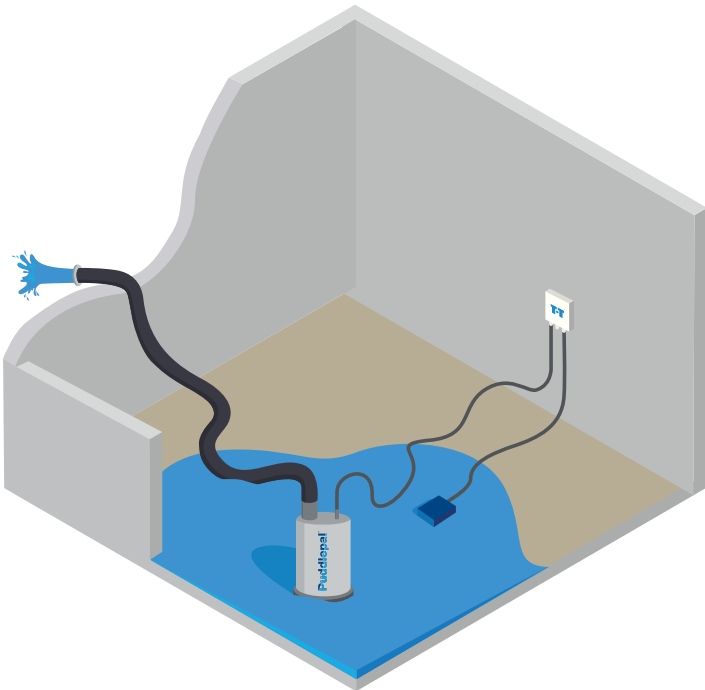
TECHNICAL FEATURES:

- PCB design
- Run on timer for use with residue pumps
- Adjustable sensitivity on conductivity circuit
- Compact weatherproof enclosure, IP66 rating
- Can control single phase motors up to 8 AMP FLC
- Audible alarm C/W mute configurable for continuous or intermittent use
- LED indication for mains healthy and pump running/ relay active
- Dual voltage input 230V/110V 1Ph
- Easy voltage selector 230V/110V
- LevelPal supplied with 10m cable as standard, longer lengths available on request
- Volt free contacts available for remote monitoring
- 2nd sensor e.g. high level on PumpPal Pro
- Test button facility

APPLICATION AREAS:



PALPACK APPLICATION



T-T Pumps Ltd., Woore, Cheshire, CW3 9RU
 Tel: 01630 647200 Fax: 01630 642100
 www.ttpumps.com Email: response@ttpumps.com

DATA1703: 29/09/2017