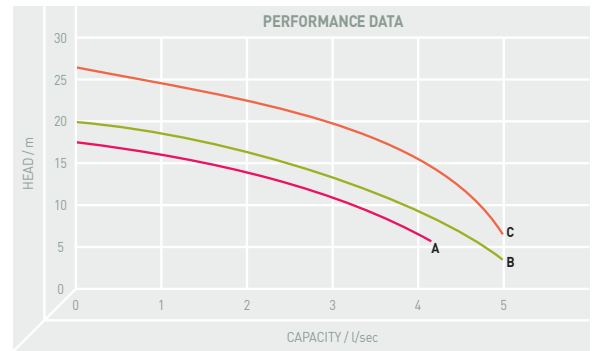


Designed for domestic and professional use, the GR Blue Pro range of submersible pumps with high-head cast iron impeller and cutter boasts an impressive 69,000 cuts per minute.

The GR Blue Pro models are equipped with an intake cutting system composed of a steel plate and triple-bladed rotary cutter. This system cuts fibres and stringy bodies and assures smooth pump function.

Features:

- Cast iron construction and impeller
- Double mechanical seal within oil bath
- 7mm solids handling
- 0.74 - 1.5kW output
- 40mm horizontal discharge
- Automatic as standard, floats removed on request
- 69,000 cuts per minute



TECHNICAL SPECIFICATION

PUMP TYPE	PRODUCT CODE	CURVE	OUTLET "/mm	FREE PASSAGE mm	CABLE LENGTH m	kW	WEIGHT kg
GR BLUE PRO 100/2/G40H 230V/1Ph	PZ/1116.002	/A	1½"/40mm	7	10	0.74	19
GR BLUE PRO 100/2/G40H 400V/3Ph	PZ/1117.002	/A	1½"/40mm	7	10	0.74	19
GR BLUE PRO 150/2/G40H 230V/1Ph	PZ/1118.001	/B	1½"/40mm	7	10	1.1	24
GR BLUE PRO 150/2/G40H 400V/3Ph	PZ/1119.002	/B	1½"/40mm	7	10	1.1	24
GR BLUE PRO 200/2/G40H 230V/1Ph	PZ/1120.001	/C	1½"/40mm	7	10	1.5	25
GR BLUE PRO 200/2/G40H 400V/3Ph	PZ/1121.001	/C	1½"/40mm	7	10	1.5	25

Max. ambient temperature	40°C
Max. density treated liquid	1100 kg/m ³
Max. immersion depth	20 m
pH treated liquid	6 ÷ 14
Max. start per hour (equally distributed)	30
Wet/dry use	WET
Max. acoustic pressure level	70dB
Operating mode	S1-Continuous use

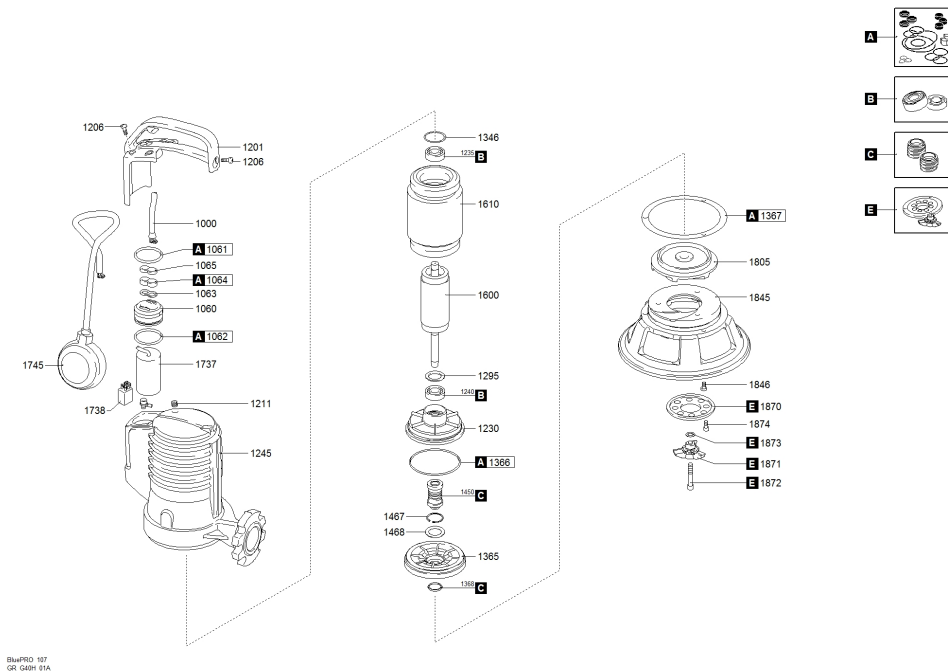
PARTS AND MATERIAL LISTS

ITEM	DESCRIPTION	QTY
A	GASKETS KIT	1
C	MECHANICAL SEALS KIT	1
E	CUTTING SYSTEM KIT	1
B	BEARINGS KIT	1
1000	POWER CABLE	1
1060	HOLDER [CABLE GLAND]	1
1061	UPPER GASKET - HOLDER [CABLE GLAND]	1
1062	LOWER GASKET - HOLDER [CABLE GLAND]	1
1063	CABLE STOP	1
1064	RUBBER GASKET	1
1065	CABLE GLAND	1
1201	CABLE GLAND [HANDLE]	1
1206	SCREW [CABLE GLAND HANDLE >> COVER]	5
1211	CAP [TIGHTNESS TEST]	1
1230	LOWER BEARING HOLDER	1
1235	UPPER BEARING	1
1240	LOWER BEARING	1
1245	MOTOR CASE	1
1295	UPPER DISTANCE RING [LOWER BEARING]	1
1346	WAVE SPRING	1

ITEM	DESCRIPTION	QTY
1365	MECHANICAL SEAL FLANGE	1
1366	GASKET [LOWER BEARING HOLDER >> MECHANICAL SEAL FLANGE]	1
1367	GASKET [MECHANICAL SEAL FLANGE >> BASE]	5
1368	V-RING [MECHANICAL SEAL FLANGE]	1
1450	MECHANICAL SEAL	1
1600	SHAFT WITH ROTOR	1
1610	WOUND STATOR	1
1737	CAPACITOR	1
1745	FLOAT SWITCH	1
1805	IMPELLER	1
1845	BASE	1
1846	SCREW [BASE >> MOTOR CASE]	3
1870	CUTTING DISK	1
1871	CHOPPER KNIFE	1
1872	LOCKING CHOPPER KNIFE	1
1873	WASHER [CHOPPER KNIFE]	4
1874	SCREW [CUTTING DISK >> PUMP BODY]	3

PARTS DRAWING

1116.002 - GRBLUEP 100/2/G40H A1CM5 NGDDB51023N00NN



DIMENSIONAL DRAWING

