

# KS 2610 MT 1~ 233

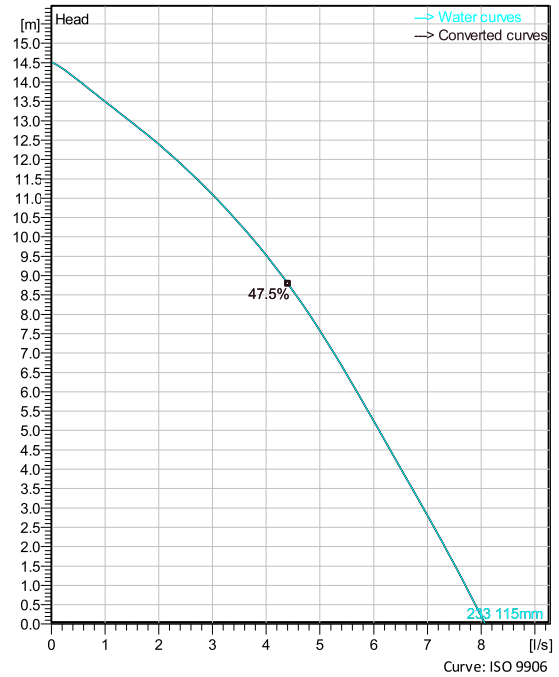
Portable pumps ideal for applications in which the water or liquid contains concentrations of abrasives when clogging problems can occur



## Technical specification



Curves according to: Water, pure [100%], 4 °C, 999.9 kg/m<sup>3</sup>, 1.5692 mm<sup>2</sup>/s



## Configuration

<b>Motor number</b> K2610.172 13-06-2BB-W 0.85KW	<b>Installation type</b> S - Portable Semi permanent, Wet
<b>Impeller diameter</b> 115 mm	<b>Discharge diameter</b> 50 m

## Pump information

<b>Impeller diameter</b> 115 mm
<b>Discharge diameter</b> 50 m
<b>Inlet diameter</b> 72 mm
<b>Maximum operating speed</b> 2785 rpm
<b>Number of blades</b> 2
<b>Max. fluid temperature</b> 40 °C

## Materials

<b>Impeller</b> Hard-Iron
------------------------------

Project  
Block

Created by Joshua Harvey  
Created on 2/9/2021 Last update 2/9/2021

# KS 2610 MT 1~ 233

## Technical specification



### Motor - General

<b>Motor number</b> K2610.172 13-06-2BB-W 0.85KW	<b>Phases</b> 1~	<b>Rated speed</b> 2785 rpm	<b>Rated power</b> 0.85 kW
<b>ATEX approved</b> No	<b>Number of poles</b> 2	<b>Rated current</b> 5.1 A	<b>Stator variant</b> 1
<b>Frequency</b> 50 Hz	<b>Rated voltage</b> 230 V	<b>Insulation class</b> F	<b>Type of Duty</b> S1
<b>Version code</b> 172			

### Motor - Technical

<b>Power factor - 1/1 Load</b> 0.97	<b>Motor efficiency - 1/1 Load</b> 74.5 %	<b>Total moment of inertia</b> 0.0014 kg m <sup>2</sup>	<b>Starts per hour max.</b> 15
<b>Power factor - 3/4 Load</b> 0.96	<b>Motor efficiency - 3/4 Load</b> 75.0 %	<b>Starting current, direct starting</b> 20 A	
<b>Power factor - 1/2 Load</b> 0.95	<b>Motor efficiency - 1/2 Load</b> 69.5 %	<b>Starting current, star-delta</b> 6.66 A	

**Project**  
**Block**

**Created by** Joshua Harvey  
**Created on** 2/9/2021 **Last update** 2/9/2021

# KS 2610 MT 1~ 233

## Performance curve

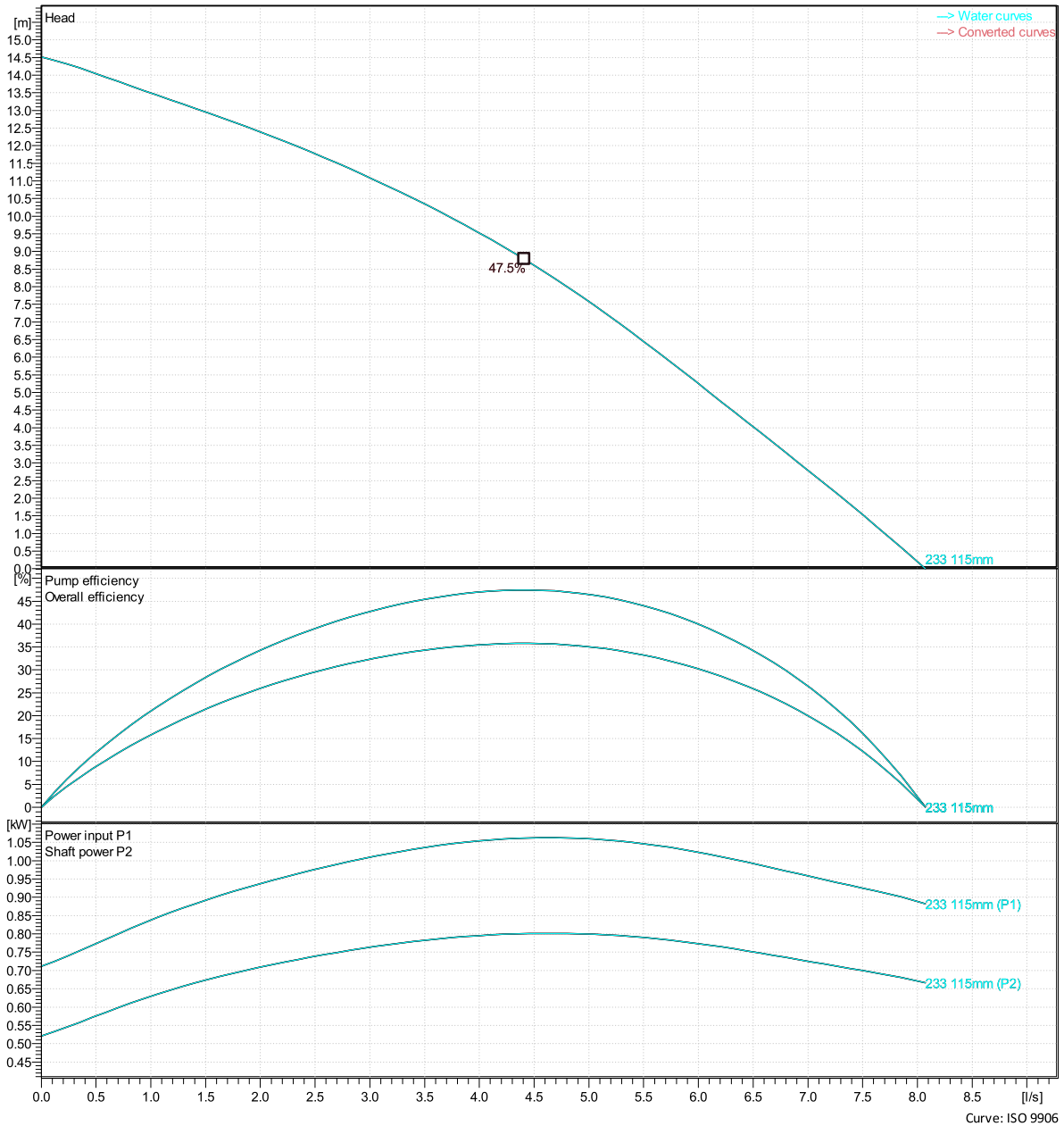


### Duty point

Flow

Head

Curves according to: Water, pure [100%], 4 °C, 999.9 kg/m<sup>3</sup>, 1.5692 mm<sup>2</sup>/s



Project  
Block

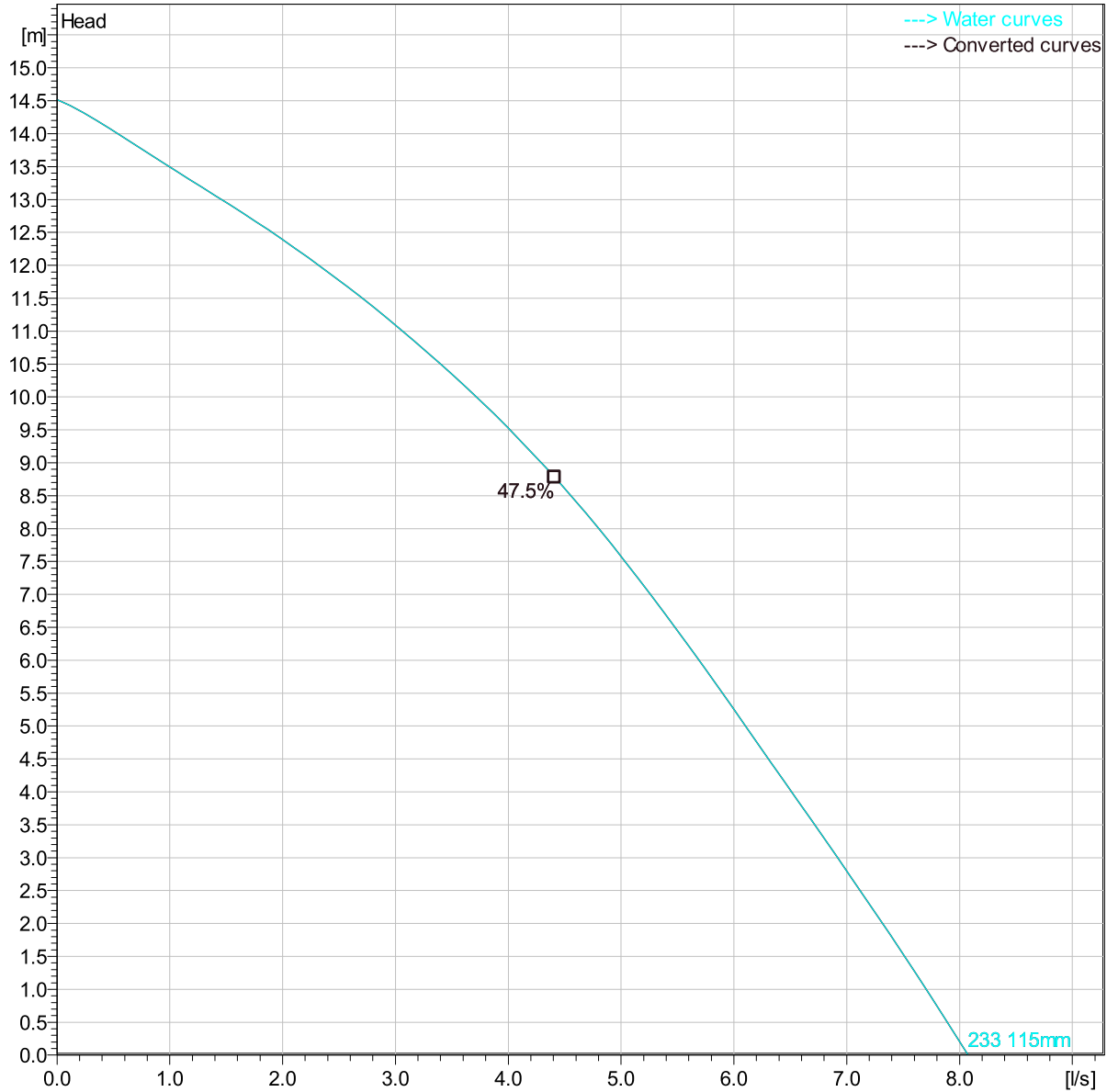
Created by Joshua Harvey  
Created on 2/9/2021 Last update 2/9/2021

# KS 2610 MT 1~ 233

## Duty Analysis



Curves according to: Water, pure [100%] ; 4°C; 999.9kg/m³; 1.5692mm²/s



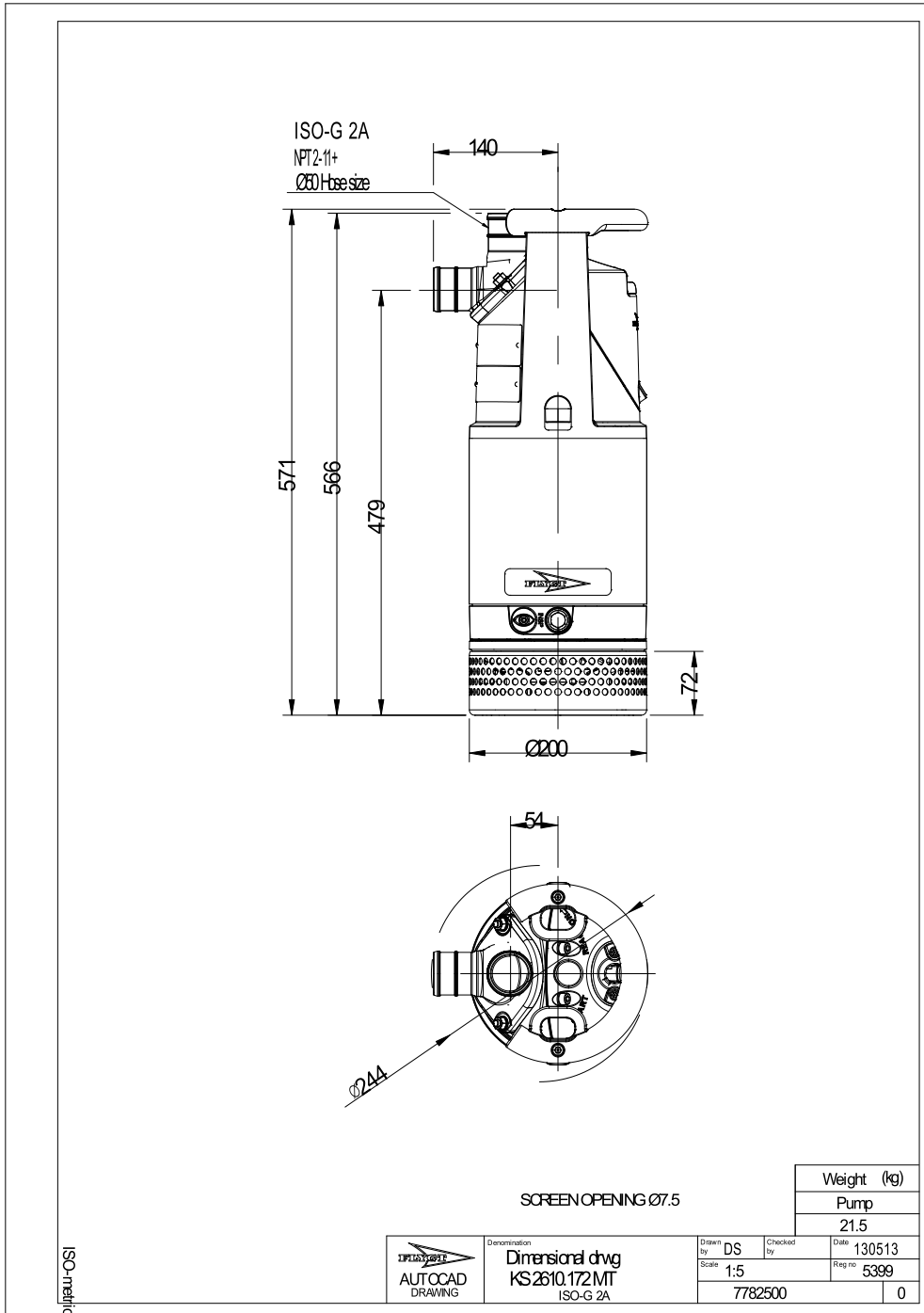
### Operating characteristics

Pumps / Systems	Flow	Head	Shaft power	Flow	Head	Shaft power	Hydr.eff.	Specific Energy	NPSHre

Project	Created by	Joshua Harvey
Block	Created on	2/9/2021
	Last update	2/9/2021

# KS 2610 MT 1~ 233

Dimensional drawing



Project  
Block

Created by Joshua Harvey  
Created on 2/9/2021 Last update 2/9/2021