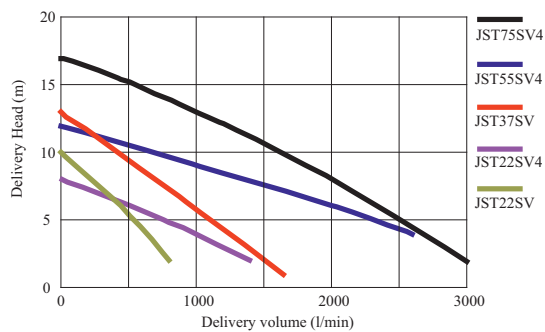
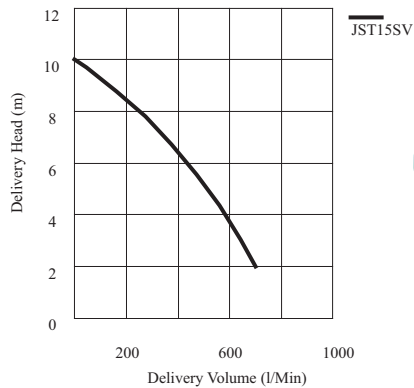
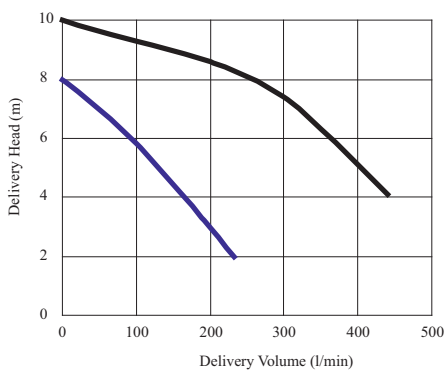


JST SEWAGE PUMPS – 415v 3-PHASE SV VERSIONS – VORTEX IMPELLER



MODEL	Kg	H x W x L mm	LM/HM	kW	CODE	PRICE
JST-4 SV 2"	15.4	415 x 140 x 215	240/8	0.4	012-698	
JST-8 SV 3"	29.4	470 x 170 x 345	550/9	0.75	012-768	
JST-15 SV 3"	36.6	515 x 170 x 395	700/10	1.5	012-774	
JST-22 SV 3" 2 POLE	52.2	580 x 210 x 430	900/11	2.2	011-026	
JST-22 SV 3" 4 POLE	59.6	650 x 255 x 480	1400/8	2.2	011-025	
JST-37 SV 3"	61.2	660 x 255 x 480	1400/14	3.7	011-040	
JST-55 SV 4"	99.6	830 x 310 x 650	2600/12	5.5	012-788	
JST-75 SV 4"	110	830 x 310 x 650	3000/17	7.5	012-792	

JST-SV versions are submersible sewage vortex impeller pumps allowing soft solids to be passed through the pump body to waste. Available as free standing as standard or can be guide rail mounted. See bottom of page for guide rails. Cast iron pump body, impeller, lower motor bearing/seal housing and motor top cover. Stainless steel shaft and motor casing. Twin mechanical seals, carbon ceramic and silicon carbide in a lubricated chamber. Complete with 10 metres of power cable. Hose tails are supplied up to model JST-37 SV. JST-4 SV – 36mm solids handling. JST-08 SV – 36mm, JST-15 SV – 46mm, JST-22 SV – 65mm, JST-37 SV – 57mm, JST55 SV & 75SV – 80mm solids handling.



JST-4 SV



JST-15 SV



SR-50H



SR-80/100

All models can be made to operate automatically, see pages 26 & 27 for control panels and pages 30 & 31 for float switches.

GUIDE RAIL SETS DIMENSIONS ON PAGE 18



MODEL	OUTLET	CODE	PRICE
JS-2" SR-50H	2"	020-501H	
JS-3" SR-80	3"	020-504	
JS-4" SR-100	4"	020-506	

FOR CONTROL PANELS AND FLOAT SWITCHES PLEASE SEE PAGES 26 - 31

JS SEWAGE PUMPS – SINGLE PHASE SV VERSIONS – VORTEX IMPELLER



MODEL	Kg	H x W x L mm	LM/HM	kW	CODE	PRICE
JS-400 SV MAN 230v 2"	17	460 x 145 x 215	240/8	0.4	012-410	
JS-400 SV AUTO 230v 2"	17	460 x 145 x 215	240/8	0.4	012-410A	
JS-400 SV MAN 110v 2"	17	460 x 145 x 215	240/8	0.4	012-414	
JS-400 SV AUTO 110v 2"	17	460 x 145 x 215	240/8	0.4	012-414A	
JS-650 SV MAN 230v 2"	21	480 x 160 x 230	300/15	0.75	011-700	
JS-650 SV AUTO 230v 2"	21	480 x 160 x 230	300/15	0.75	011-700A	
JS-650 SV MAN 110v 2"	21	480 x 160 x 230	300/15	0.75	011-702	
JS-650 SV AUTO 110v 2"	21	480 x 160 x 230	300/15	0.75	011-702A	
JS-750 SV MAN 230v 3"	32	530 x 165 x 345	500/9	0.75	012-751	
JS-750 SV AUTO 230v 3"	32	530 x 165 x 345	500/9	0.75	012-751A	
JS-750 SV MAN 110v 3"	32	530 x 165 x 345	500/9	0.75	012-754	
JS-750 SV AUTO 110v 3"	32	530 x 165 x 345	500/9	0.75	012-754A	
JS-1500 SV MAN 230v 3"	44	610 x 190 x 370	750/10	1.5	011-768	
JS-1500 SV AUTO 230v 3"	44	610 x 190 x 370	750/10	1.5	011-768A	



JS-400 SV MANUAL



JS-400 SV AUTO



JS-750 SV



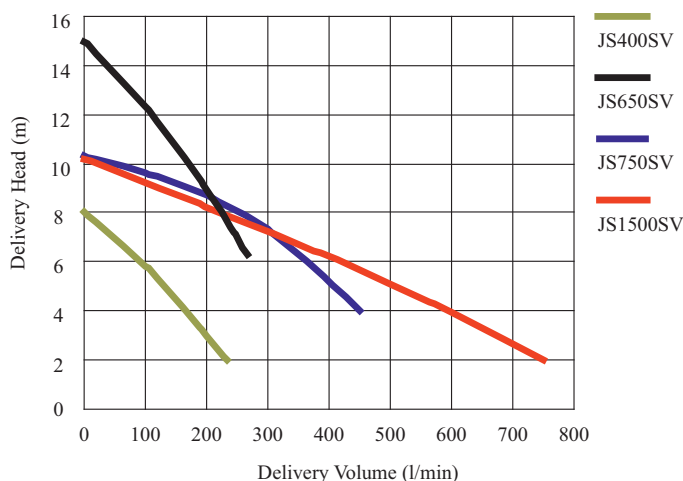
SR-50H



SR-80

AUTOMATIC PUMPS ARE FITTED WITH MAC3 FLOATS ALLOW APPROX 300MM AWAY FROM PUMP FOR FLOAT SWITCH TO OPERATE

JS-SV series are submersible sewage vortex impeller pumps allowing soft solids to be passed through the pump body to waste. Available as standard as free standing or can be guide rail mounted. See below for guide rails. Cast iron pump body, impeller, lower motor bearing/ seal housing and motor top cover. Stainless steel shaft and motor casing. Twin mechanical seals, carbon ceramic and silicon carbide in a lubricated chamber. Complete with 10 metres of power cable. Hose tails are supplied with all models. JS-400/650sv – 36mm solids handling. JS-750sv – 46mm solids handling. JS-1500sv – 65mm solids handling.



GUIDE RAIL SETS DIMENSIONS ON PAGE 18



MODEL	OUTLET	CODE	PRICE
JS-2" SR-50H	2"	020-501H	
JS-3" SR-80	3"	020-504	

FOR CONTROL PANELS AND FLOAT SWITCHES PLEASE SEE PAGES 26 - 31

JST SEWAGE PUMPS – 415v 3-PHASE SK VERSIONS – SINGLE CHANNEL CUTTER IMPELLER

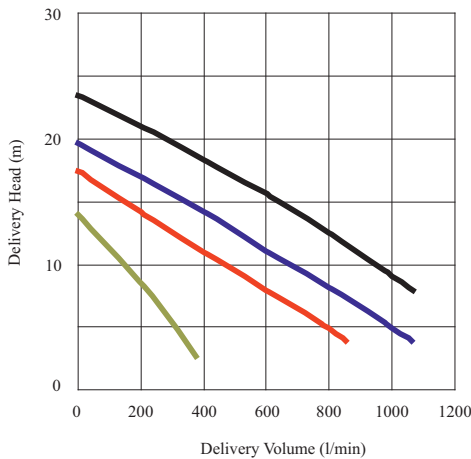


MODEL	Kg	H x W x L mm	LM/HM	kW	CODE	PRICE
JST-8 SK 2"	27.8	465 x 195 x 315	400/14	0.75	012-780	
JST-15 SK 3"	37.6	515 x 240 x 375	800/17	1.5	012-782	
JST-22 SK 3"	49.8	565 x 240 x 405	1000/20	2.2	012-784	
JST-37 SK 4"	55	610 x 250 x 405	1200/25	3.7	012-786	
JST-55 SK 4"	76	730 x 420 x 740	1800/19	5.5	012-790	
JST-75 SK 4"	86	750 x 420 x 740	2200/22	7.5	012-796	

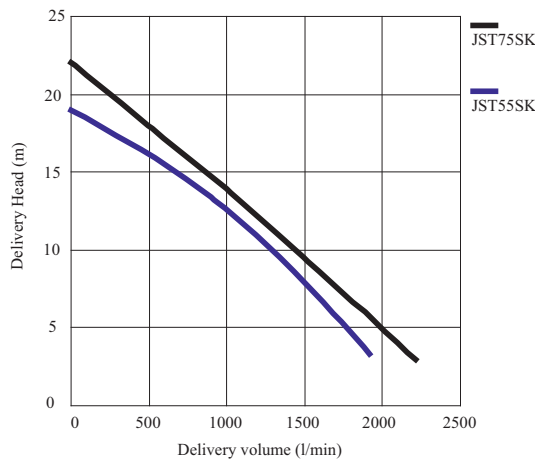


JST-15 SK

JST-SK series are submersible sewage cutter impeller pumps. Available as standard as free standing or can be guide rail mounted. See below for guide rails.
Single channel tungsten carbide tipped impeller capable of cutting soft solids into smaller parts to pump through the body to waste. Cast iron pump body, volute stand, impeller, lower motor bearing/seal housing and motor top cover. Stainless steel shaft and motor casing.
Twin mechanical seals, carbon ceramic and silicon carbide in a lubricated chamber.
Complete with 10 metres of power cable.
Hose tails are supplied with all models apart from the JST-37, 55 and 75 SK.



JST-55 SK



SR-50



SR-80/100

All models can be made to operate automatically, see pages 26 & 27 for control panels and pages 30 & 31 for float switches.

GUIDE RAIL SETS DIMENSIONS ON PAGE 18



MODEL	OUTLET	CODE	PRICE
JS-2" SR-50S	2"	020-501S	
JS-3" SR-80	3"	020-504	
JS-4" SR-100	4"	020-506	

FOR CONTROL PANELS AND FLOAT SWITCHES PLEASE SEE PAGES 26 - 31

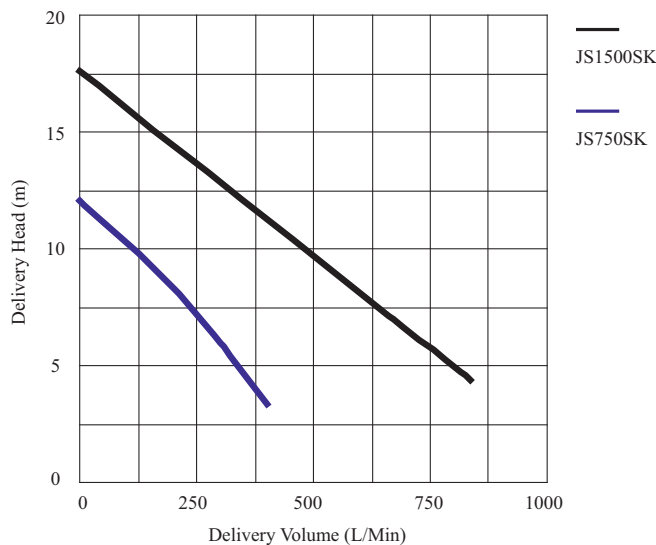
JS SEWAGE PUMPS – SINGLE PHASE SK VERSIONS – SINGLE CHANNEL CUTTER IMPELLER

A

MODEL	Kg	H x W x L mm	LM/HM	kW	CODE	PRICE
JS-750 SK MAN 230v 2"	29.4	530 x 190 x 310	400/14	0.75	012-757	
JS-750 SK AUTO 230v 2"	29.4	530 x 190 x 310	400/14	0.75	012-757A	
JS-750 SK MAN 110v 2"	29.4	530 x 190 x 310	400/14	0.75	012-758	
JS-750 SK AUTO 110v 2"	29.4	530 x 190 x 310	400/14	0.75	012-758A	
JS-1500 SK MAN 230v 3"	36.4	580 x 240 x 360	800/16	1.5	011-776	
JS-1500 SK AUTO 230v 3"	36.4	580 x 240 x 360	800/16	1.5	011-776A	

**AUTOMATIC PUMPS ARE FITTED WITH MAC3 FLOATS
ALLOW APPROX 300MM AWAY FROM PUMP FOR FLOAT SWITCH TO OPERATE**

JS-SK series are submersible sewage cutter impeller pumps. Available as standard as free standing or can be guide rail mounted. See below for guide rails.
Single channel tungsten carbide tipped impeller capable of cutting soft solids into smaller parts to pump through the body to waste. Cast iron pump body, volute stand, impeller, lower motor bearing/seal housing and motor top cover. Stainless steel shaft and motor casing.
Twin mechanical seals, carbon ceramic and silicon carbide in a lubricated chamber.
Complete with 10 metres of power cable. Hose tails are supplied with all models.



JS-750 SK MAN



JS-750 SK AUTO



SR-50



SR-80

GUIDE RAIL SETS DIMENSIONS ON PAGE 18

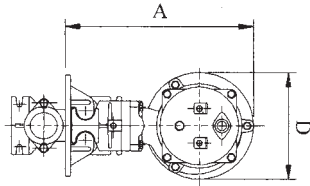
A

MODEL	OUTLET	CODE	PRICE
JS-2" SR-50S	2"	020-501S	
JS-3" SR-80	3"	020-504	

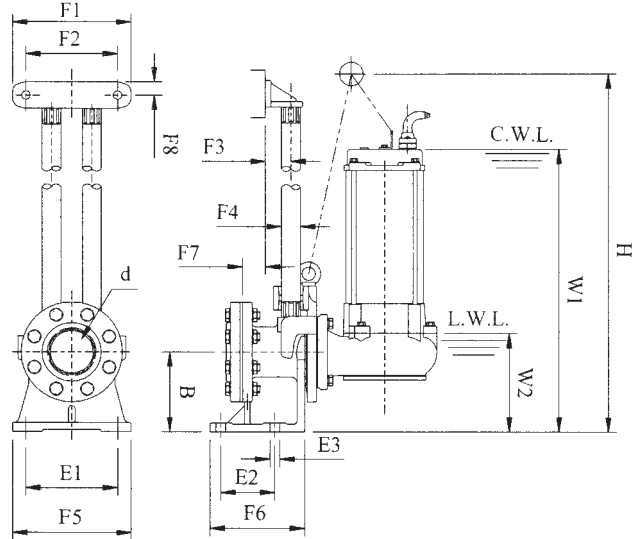
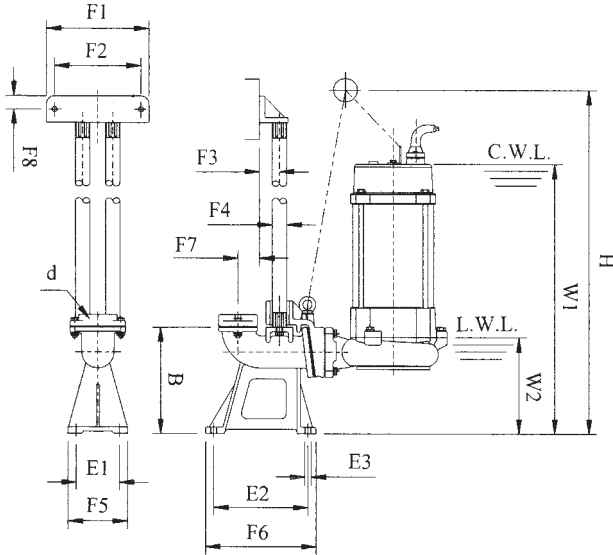
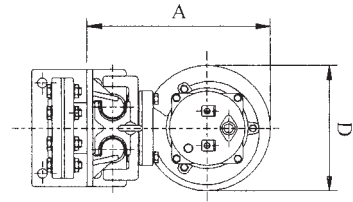
FOR CONTROL PANELS AND FLOAT SWITCHES PLEASE SEE PAGES 26 - 31

GUIDE RAIL DIMENSIONS

● SR50 (2")



● SR80 (3")
SR100 (4")



Pump Type	Discharge Bore	Foundation			Guide Rail Fitting Section												
		d	E1	E2	E3	A	B	D	H	F1	F2	F3	F4	F5	F6	F7	F8
JS250	SV	2" (50)	80	175	10	330	200	135	495	190	150	38	25A	110	205	36	25
JS400	SV	2" (50)	80	175	10	330	200	135	515	190	150	38	25A	110	205	36	25
JS650	SV	2" (50)	80	175	10	343	200	135	550	190	150	38	25A	110	205	36	25
JS750	SV	3" (80)	170	100	18	405	260	170	645	225	170	49	32A	225	180	43	20
JS1500	SV	3" (80)	170	100	18	315	150	195	715	225	170	49	32A	220	175	43	20
JST4	SV	2" (50)	80	175	10	330	200	135	495	190	150	38	25A	110	205	36	25
JST8	SV	3" (80)	170	100	18	405	260	170	585	225	170	49	32A	225	180	43	20
JST15	SV	3" (80)	170	100	18	315	150	195	630	225	170	49	32A	220	175	43	20
JST22	SV	3" (80)	170	100	18	355	150	255	685	240	170	49	32A	220	175	43	20
JST37	SV	3" (80)	170	100	18	355	150	255	760	240	170	49	32A	220	175	43	20
JST22	SV4	3" (80)	170	100	18	395	150	255	725	225	170	49	32A	220	175	43	20
JST37	SV4	3" (80)	170	100	18	395	150	255	740	225	170	49	32A	220	175	43	20
JST55	SV4	4" (100)	200	150	19	510	180	315	865	240	200	60	32A	250	225	43	18
JST75	SV4	4" (100)	200	150	19	510	180	315	925	240	200	60	32A	250	225	43	18

JS750	SK	2" (50)	80	175	10	340	200	195	660	190	150	38	25A	110	205	36	25
JS1500	SK	3" (80)	170	100	18	320	150	240	665	225	170	49	32A	220	175	43	20
JST8	SK	2" (50)	80	175	10	340	200	195	600	195	150	38	25A	110	205	36	25
JST15	SK	3" (80)	170	100	18	320	150	240	615	225	170	49	32A	220	175	43	20
JST22	SK	3" (80)	170	100	18	345	150	250	680	225	170	49	32A	220	175	43	20
JST37	SK	4" (100)	200	150	19	570	180	250	775	240	200	60	40A	250	225	73	18
JST55	SK	4" (100)	200	150	19	525	180	260	825	240	200	60	40A	250	225	73	18
JST75	SK	4" (100)	200	150	19	595	180	260	935	240	200	60	40A	250	225	73	18

GS1200		2" (50)	90	178	10	300	200	170	660	150	120	38	25A	115	210	36	15
GS1500		2" (50)	90	178	10	341	200	180	675	150	120	38	25A	115	210	36	15
GST12		2" (50)	90	178	10	336	200	170	615	150	120	38	25A	115	210	36	15
GST15		2" (50)	90	178	10	341	200	180	620	150	120	38	25A	115	210	36	15
GST22		2" (50)	90	178	10	366	200	206	680	150	120	38	25A	115	210	36	15
GST37		2" (50)	90	178	10	366	200	206	740	150	120	38	25A	115	210	36	15

HEAVY DUTY SEWAGE GRINDER PUMPS TUNGSTEN CARBIDE CUTTERS



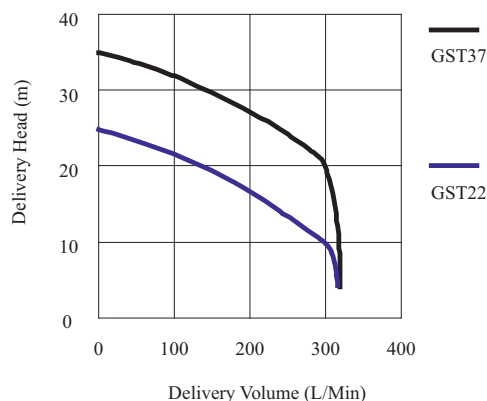
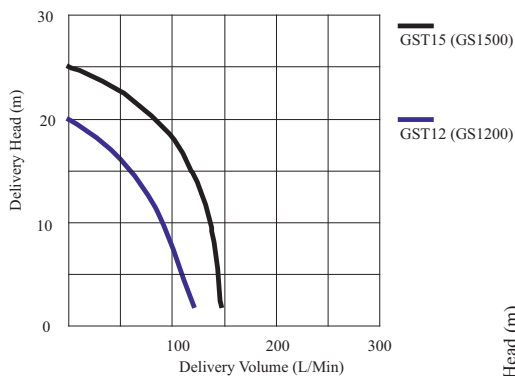
MODEL	Kg	H x W x L mm	LM/HM	kW	CODE	PRICE
SINGLE PHASE						
GS-1200 1 1/4" MAN 230v	32.6	510 x 170 x 310	120/20	1.2	020-702	
GS-1200 1 1/4" AUTO 230v	32.6	510 x 170 x 310	120/20	1.2	020-702A	
GS-1200 1 1/4" MAN 110v	32.6	510 x 170 x 310	120/20	1.2	020-704	
GS-1200 1 1/4" AUTO 110v	32.6	510 x 170 x 310	120/20	1.2	020-704A	
GS-1500 1 1/4" MAN 230v	36.2	565 x 180 x 315	150/25	1.5	020-707	
GS-1500 1 1/4" AUTO 230v	36.2	565 x 180 x 315	150/25	1.5	020-707A	
THREE PHASE						
GST-12 1 1/4" 415v	30	460 x 170 x 310	120/20	1.2	020-712	
GST-15 1 1/4" 415v	33.8	490 x 180 x 315	150/25	1.5	020-715	
GST-22 2" 415v	48.8	550 x 235 x 370	320/26	2.2	020-720	
GST-37 2" 415v	53	560 x 235 x 370	320/36	3.7	020-737	



GS-1200 Auto

GS grinder pumps have tungsten carbide cutters and grinding rings which allow up to 28,000 cuts per minute. Used for domestic and industrial applications where either high heads or long distances prohibit the use of standard submersibles or large bore discharge pipe is not available or uneconomical to install. Hosetails are supplied with all models.

Free standing or can be guide rail mounted. See bottom of page for guide rails. When used in sewage package stations and full control is required see page 27. For basic control panels see page 26. For float switches see pages 30 and 31.



Cutter & Cutting Ring

GUIDE RAIL SETS SUITS ALL MODELS



MODEL	OUTLET	CODE	PRICE
JS-2" SR-50S	2"	020-501S	



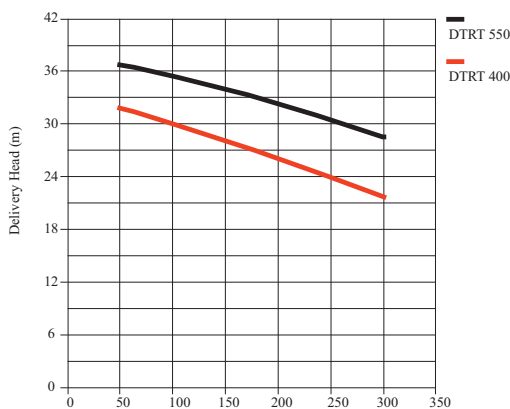
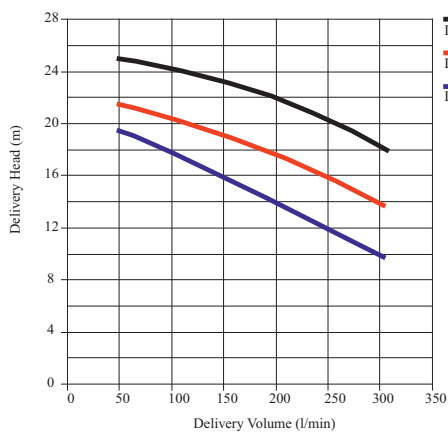
SR-50

PENTAX DTR/DTRT HIGH HEAD GRINDER SUBMERSIBLES

E

MODEL	KG	H x W x L	LM/HM	kW	CODE	PRICE
DTR 150 230v	35	513 x 282 x 282	300/19	1.1	020-650	
DTR 200 230v	36	513 x 282 x 282	300/22	1.5	020-652	
DTRT 150 415v	35	513 x 282 x 282	300/19	1.1	020-654	
DTRT 200 415v	36	513 x 282 x 282	300/22	1.5	020-656	
DTRT 300 415v	37	513 x 282 x 282	300/26	2.2	020-658	
DTRT 400 415v	59	595 x 350 x 350	350/33	3.0	020-660	
DTRT 550 415v	61	595 x 350 x 350	350/38	4.0	020-662	
DTRT 750 415v	69	680 x 350 x 350	360/47	5.5	020-664	
DTRT 1000 415v	71	680 x 350 x 350	360/54	7.5	020-666	
2" BSP Counter Flange 1.7					020-670	

- DTR/T high head submersible grinder pumps
- Cast iron pump casing and impeller
- Stainless steel shaft
- Twin mechanical seals – carbon and silicon
- Supplied with 10 metres of power cable



PENTAX DTR 150



PENTAX DTRT 400

Maximum liquid temperature of 40°C. Two pole motor in oil bath. Single phase models have external capacitor, supplied loose.

If you require a control panel see pages 26 and 27.

DTR150 - 35uF and DTR200 - 50uF.

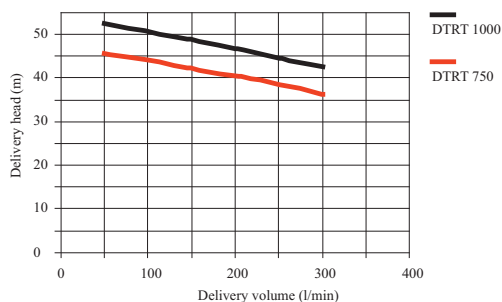
Twenty metres maximum immersion depth.

DTRT150, 200 and 300 – 2" female outlet, 8mm solids handling.

DTRT400-1000 UNI PN10 DN50 Flange. 10mm solids handling.

Counter flange 2" BSP can be supplied upon request.

User is responsible for motor protection.



PENTAX DC/T HIGH HEAD SUBMERSIBLES

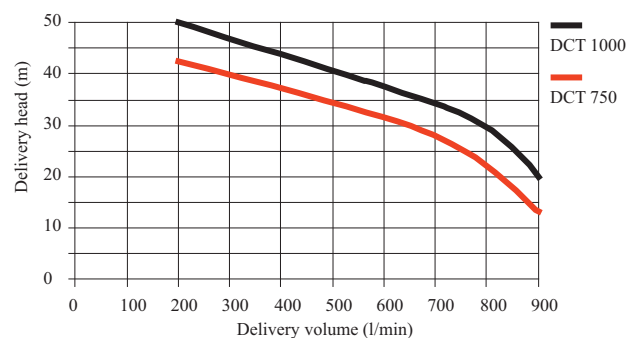
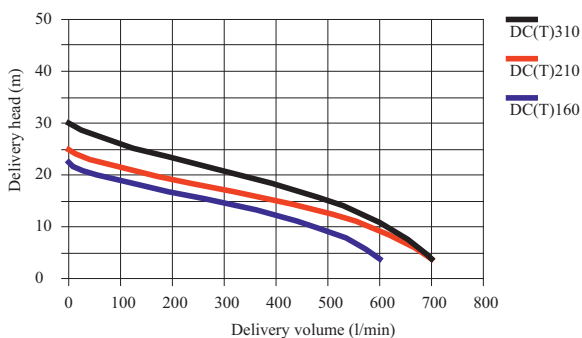
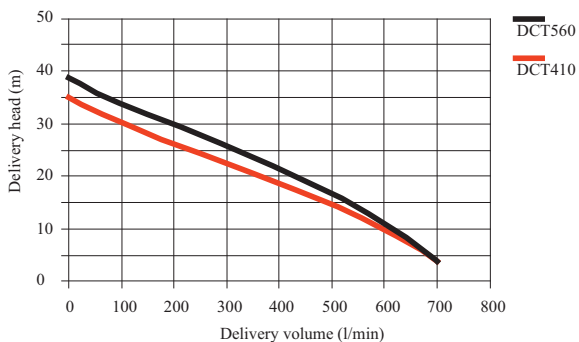
E

MODEL	KG	H x W x L	LM/HM	kW	CODE	PRICE
DC 160 230v	34	507 x 282 x 282	600/22	1.1	020-630	
DC 210 230v	35	507 x 282 x 282	650/25	1.5	020-632	
DCT 160 415v	34	507 x 282 x 282	600/22	1.1	020-634	
DCT 210 415v	35	507 x 282 x 282	650/25	1.5	020-636	
DCT 310 415v	36	507 x 282 x 282	700/29	2.2	020-638	
DCT 410 415v	56	601 x 350 x 350	700/34	3.0	020-640	
DCT 560 415v	64	601 x 350 x 350	750/38	4.0	020-642	
DCT 750 415v	92	680 x 350 x 350	900/47	5.5	020-644	
DCT 1000 415v	96	680 x 350 x 350	900/55	7.5	020-646	
2" BSP Counter Flange	1.7				020-670	

- DC/T high head submersible pumps
- Cast iron pump casing and impeller
- Stainless steel shaft
- Twin mechanical seals – carbon and silicon
- Supplied with 10 metres of power cable

Maximum liquid temperature of 40°C. Two pole motor in oil bath. Single phase models have external capacitor, supplied loose. If you require a control panel see pages 26 and 27.

DC160 - 35uF and DC210 - 50uF. Twenty metres maximum immersion depth. DC/T160, 210 and 310 - 2" female outlet, 8mm solids handling. DCT410-1000 UNI PN10 DN50 flange. 10mm solids handling. Counter flange 2" BSP can be supplied upon request. User is responsible for motor protection.



PENTAX DCT 410

PENTAX DC 160