

Data sheet: VeroTwin-DP-E 50/105-0,75/2

Hydraulic data

Minimum efficiency index (MEI)	0.4
Maximum operating pressure p	10 bar
Min. fluid temperature T_{\min}	-20 °C
Max. fluid temperature T_{\max}	120 °C
Min. ambient temperature T_{\min}	0 °C
Max. ambient temperature T_{\max}	40 °C

Materials

Pump housing	EN-GJL-250
Impeller	PPE/PS-GF30
Shaft	1.4021
Shaft seal	AQ1EGG
Lantern	EN-GJL-250

Installation dimensions

Port-to-port length $L0$	280 mm
Pipe connection on the suction side DN_s	DN 50
Pipe connection on the pressure side DN_d	DN 50

Motor data

Mains connection	3~440 V, 50 Hz
Motor efficiency class	IE4
Rated power P_2	0.75 kW
Rated current I_N	1.90 A
Rated speed n	2900 rpm
Max. speed n_{\max}	2900 rpm
Emitted interference	EN 61800-3
Interference resistance	EN 61800-3
Insulation class	F
Protection class motor	IP55

Approved liquids (other liquids upon request)

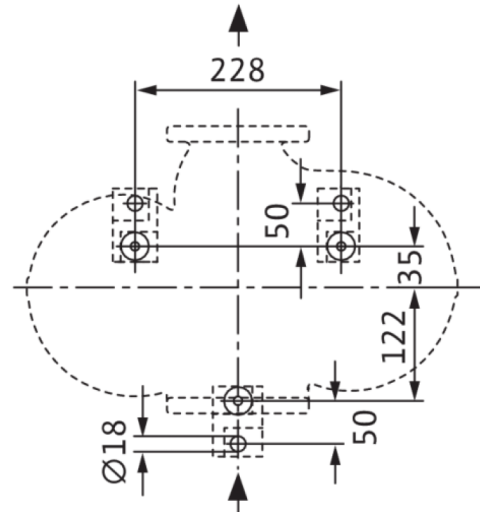
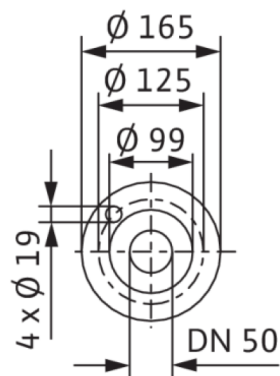
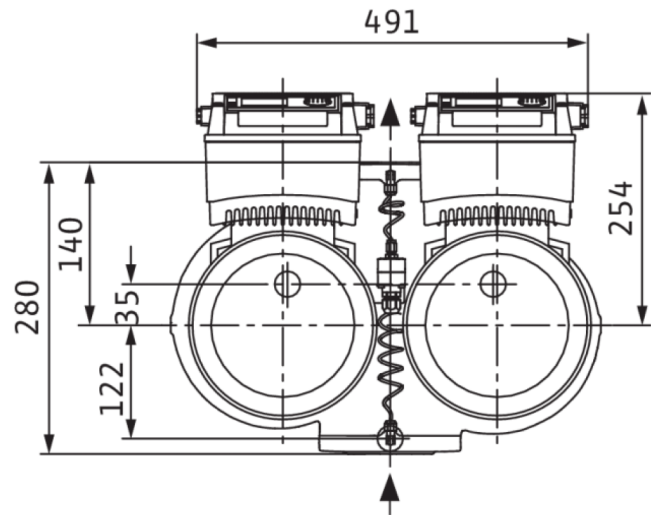
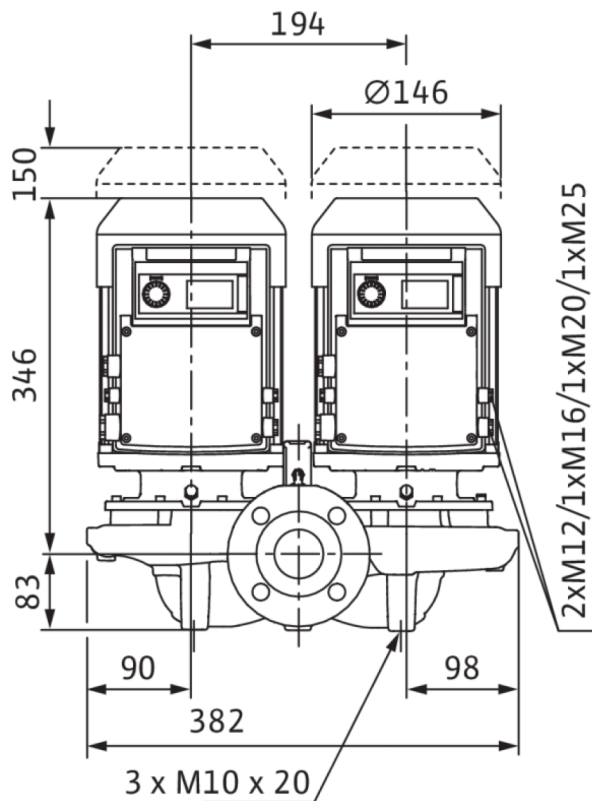
Heating water (as per VDI 2035)	yes
Heat carrier oil	Special version at additional charge
Cooling and cold water circulation systems	yes
Water-glycol mixtures (at 20 – 40 vol. % glycol and fluid temperature ≤ 40 °C)	yes

Information for order placements

Brand	Wilo
Product description	VeroTwin-DP-E 50/105-0,75/2
EAN number	4048482602370
Article number	2158946
Net weight, approx. m	56 kg
Gross weight, approx. m	68.4 kg
Length with packaging	790 mm
Height with packaging	514 mm
Width with packaging	600 mm
Packaging property	Transport packaging
Packaging type	Cardboard box
Minimum order quantity	1

Dimensions and dimensions drawings: VeroTwin-DP-E 50/105-0,75/2

VeroTwin-DP-E 50/105-0,75/2

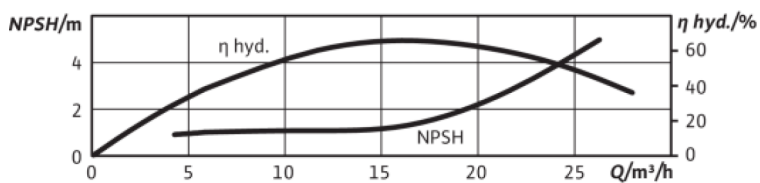
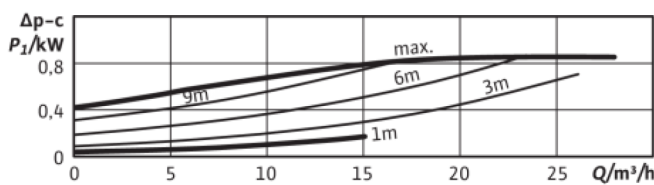
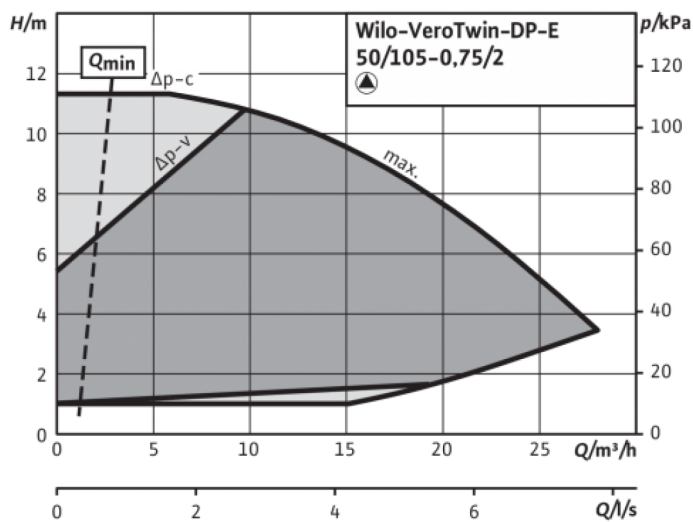
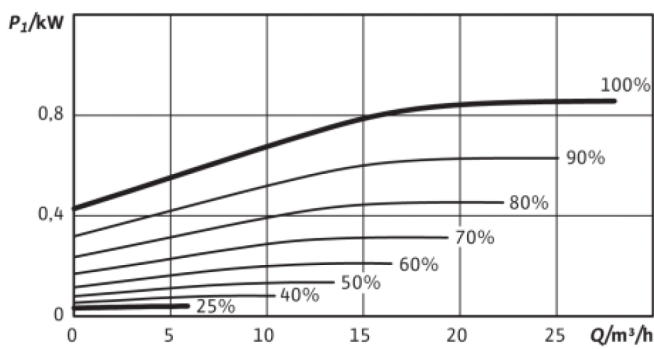
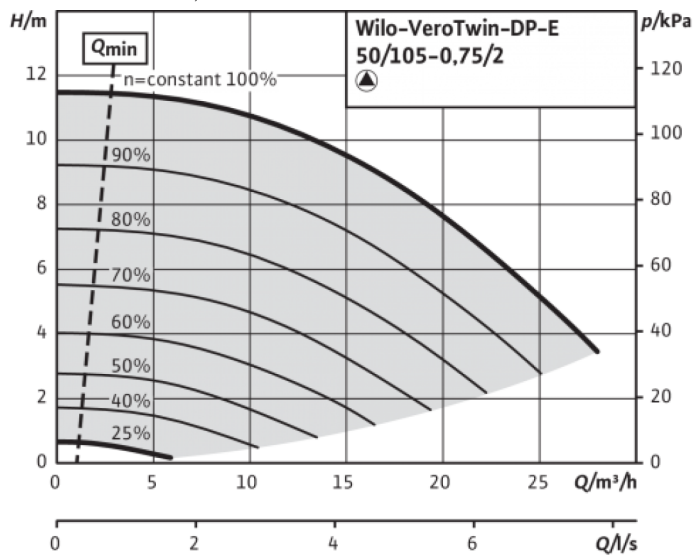


Note:

Housing with feet for installation on a base and drilled holes M10, brackets on request.

Pump curves: VeroTwin-DP-E 50/105-0,75/2

Wilo-VeroTwin-DP-E 50/105-0,75/2



Pump curves: VeroTwin-DP-E 50/105-0,75/2

Wilo-VeroTwin-DP-E 50/105-0,75/2

