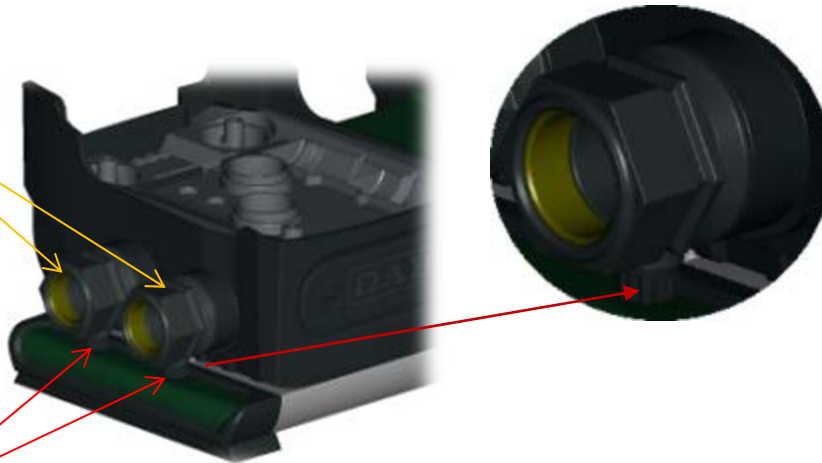
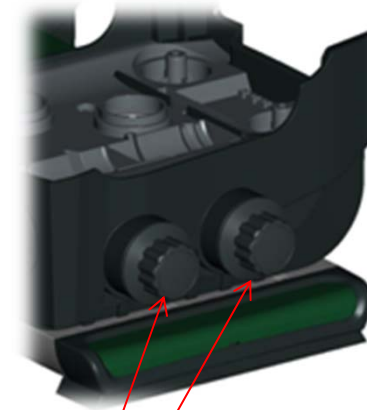


# E.SYTWIN – FEATURES

Delivery & Suction Unions



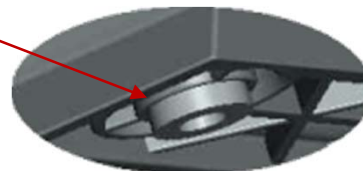
Caps to discharge the system in case of maintenance/removal of the e.sybox



Side caps



Anti Vibration Feet



Ground Fixing System

# E.SYTWIN – CONNECTION FEATURES



4 adapters: to connect 2 e.sybox



4 Clammers: to fasten the union + side plugs



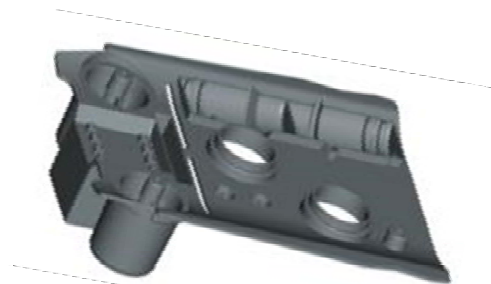
4 Clammers: To fix the central junction.



2 suction and delivery unions



2 side plugs



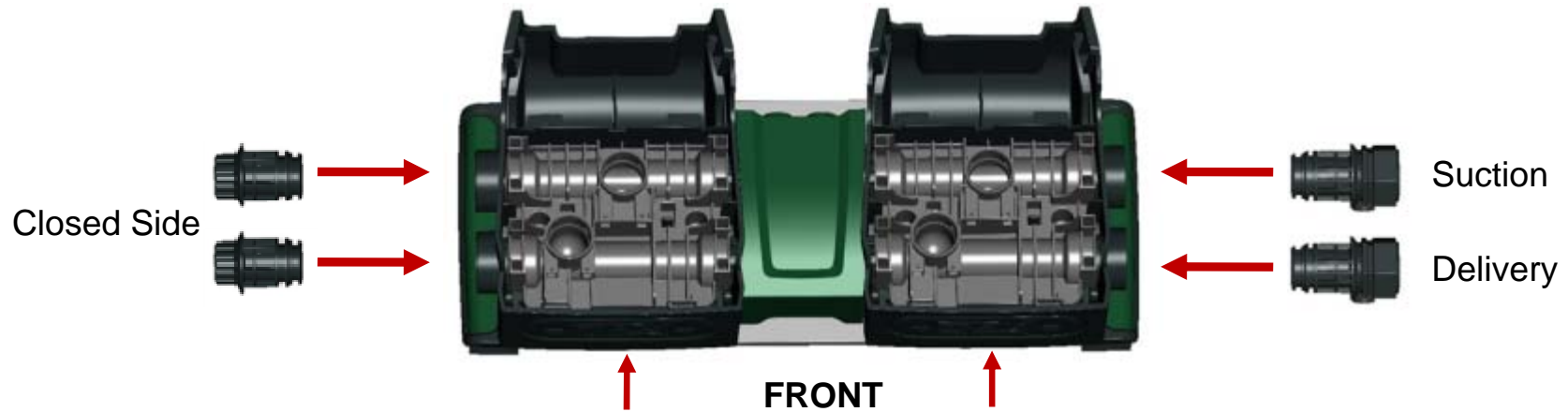
2 upper covers



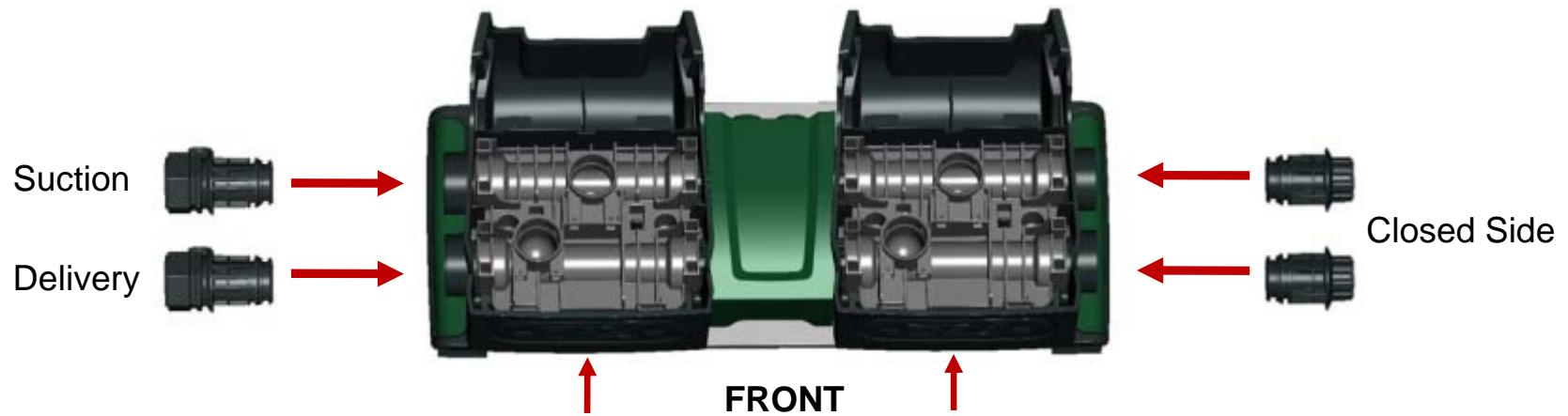
2 maintenance plugs: see next slide

# E.SYTWIN – SUCTION AND DELIVERY ON ONE SIDE

## Right Suction and Delivery

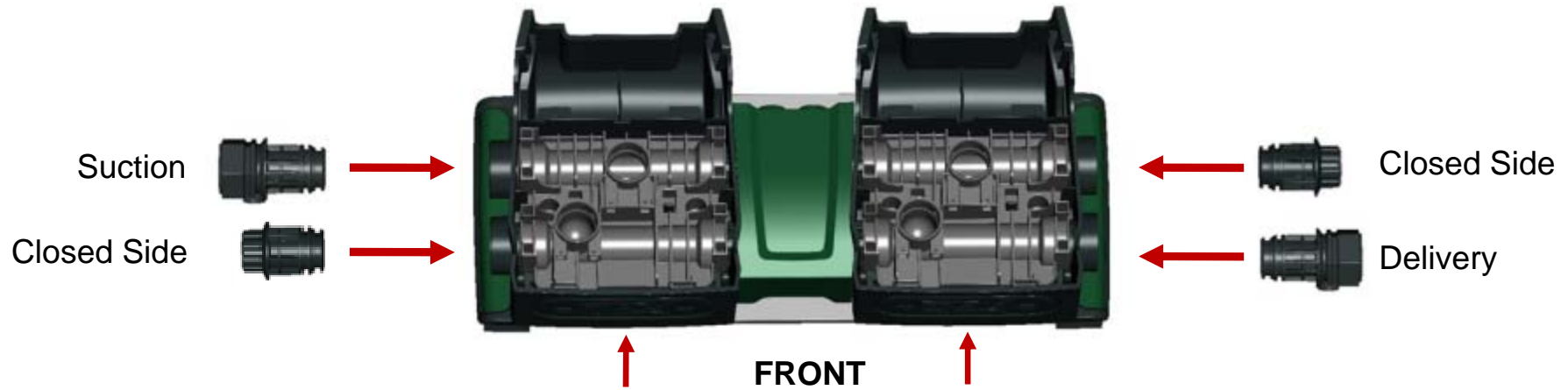


## Left Suction and Delivery

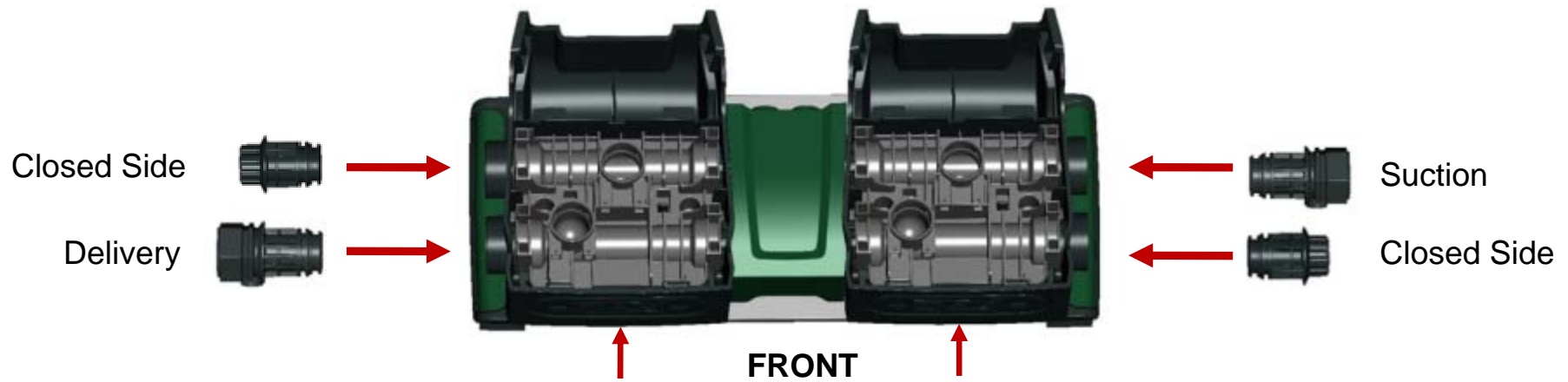


# E.SYTWIN – SUCTION AND DELIVERY IN LINE

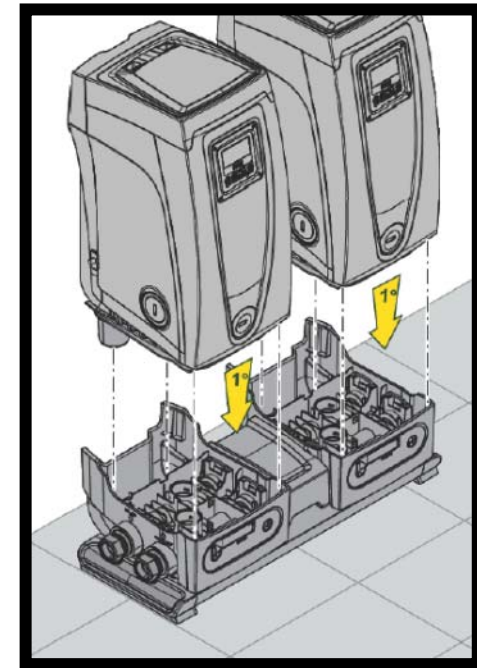
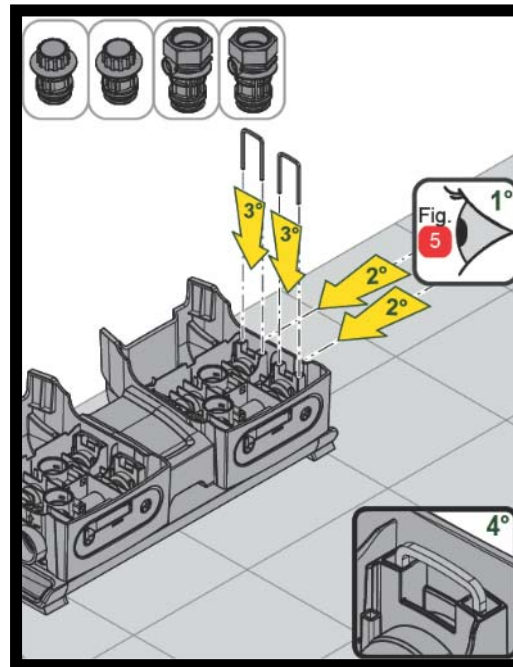
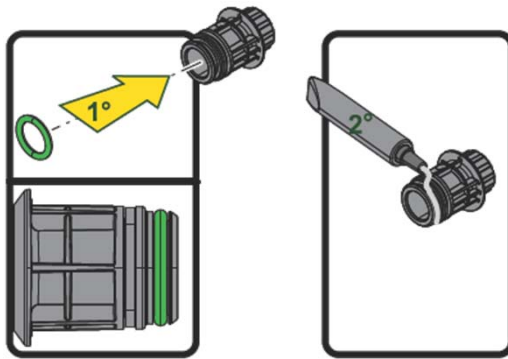
## Left Suction, Right Delivery



## Right Suction, Left Delivery



## E.SYTWIN – HYDRAULIC CONNECTION FIXING



### **WARNING:**

- ***Use the quick guide during the installation***
- ***Pay attention on the correct position of all o-rings***
- ***Grease all o-rings before placing them***