

# CLAMPBRO®



## 3KW ELECTRIC FAN HEATER

MODEL NO: DEVIL 7003

PART NO: 6935450

### OPERATION & MAINTENANCE INSTRUCTIONS



LS0717 - ISS 2

---

## INTRODUCTION

---

Thank you for purchasing this CLARKE product.

Before attempting to use this product, please read this manual thoroughly and follow the instructions carefully. In doing so you will ensure the safety of yourself and that of others around you, and you can look forward to your purchase giving you long and satisfactory service.

---

## GUARANTEE

---

This product is guaranteed against faulty manufacture for a period of 12 months from the date of purchase. Please keep your receipt which will be required as proof of purchase.

This guarantee is invalid if the product is found to have been abused or tampered with in any way, or not used for the purpose for which it was intended.

Faulty goods should be returned to their place of purchase, no product can be returned to us without prior permission.

This guarantee does not effect your statutory rights.

---

## ENVIRONMENTAL RECYCLING POLICY

---



Through purchase of this product, the customer is taking on the obligation to deal with the WEEE in accordance with the WEEE regulations in relation to the treatment, recycling & recovery and environmentally sound disposal of the WEEE.


In effect, this means that this product must not be disposed of with general household waste. It must be disposed of according to the laws governing Waste Electrical and Electronic Equipment (WEEE) at a recognised disposal facility.

---

## SAFETY SYMBOLS

---

The following symbols appear on the unit.

	Hot Surface, Do Not Touch		Do Not Cover
		<b>DO NOT COVER</b>	

---

## SAFETY RULES

---

Make sure that you read, understand and comply with the following.

### ELECTRICAL SAFETY

---



#### **WARNING: THIS HEATER MUST BE EARTHED**

---

- Regularly inspect the power cable / plugs and all electrical connections for signs of damage/looseness. Do not use the heater if the power cable is damaged.
- Minimise the risk of electric shock by installing a RCCB (Residual Current Circuit Breaker) and a suitable isolator into the main distribution board.
- Make sure that the voltage on the rating plate is the same as the voltage of the power supply. If in doubt, consult a qualified electrician.
- Do not abuse the electrical cable. Never use the cable for pulling or unplugging the heater.
- Keep the cable away from sources of heat, oil, sharp edges or moving parts. Damaged or tangled cables increase the risk of electric shock.
- Do not use extension cables with this heater.

## MAINTENANCE.

---



**WARNING: DISCONNECT THE HEATER FROM THE POWER SUPPLY, BEFORE SERVICING OR PERFORMING ANY MAINTENANCE. SERVICING OR MAINTENANCE MUST ONLY BE CARRIED OUT BY THE CLARKE SERVICE DEPARTMENT.**

---

- Check that the heater is in good working order. Take immediate action to repair or replace damaged parts.
- Do not allow the heating elements to become covered with dust which could become a fire hazard. If used in a dusty workplace it should be cleaned as described under Cleaning and Maintenance.
- Use recommended parts only. Unapproved parts may be dangerous and will invalidate the warranty.
- DO NOT attempt to repair a damaged heater, contact the Clarke service department.

## POSITIONING

---



**WARNING: DO NOT USE THE HEATER NEAR FLAMMABLE MATERIAL, LIQUIDS, SOLIDS, GASSES OR COMPRESSED GAS CYLINDERS ETC.**

---

- Heater is designed for indoor use only.
- DO NOT place the heater close to a bath, wash basin, shower, swimming pool or any other water-filled area or wet surface. DO NOT place the heater up against any surface such as a wall, door or furniture etc.
- DO NOT place the heater immediately below any electrical outlet.
- NEVER place the heater near combustible materials such as curtains, furniture etc. Allow at least 2 metre clearance.
- DO NOT place the heater on a raised surface or anywhere where it could topple over
- Take care to ensure that the grille cannot be blocked by curtains or other fabrics.
- Do not operate fan heaters in explosive atmospheres such as in the presence of flammable liquids, gasses or dust such as in a paint spray booth or any explosive environment. Electric motors create sparks which may ignite dust or fumes.

## **COMMON SENSE**

- DO NOT operate the heater when you are tired or under the influence of alcohol, drugs or intoxicating medication.
- DO NOT stand on the heater.
- DO NOT use the heater with wet hands or when there is water on the power cable.
- Turn the heater off when not in use and keep it in a safe, dry, childproof location.
- The heater is designed to heat enclosed areas larger than 4m<sup>3</sup>, such as workshops and other industrial areas. Do not use the heater for any other function. It is not suitable for drying clothes or laundry.
- Young children must be kept away unless continuously supervised.

## **OPERATION**

- The heater must only be used by people who have read these instructions and have been trained in its use.
- DO NOT obstruct the air inlet and outlet sections of the heater.
- DO NOT cover the heater.
- DO NOT touch the heater casing or grille when first switched off, as these will be very hot and will take time to cool.
- DO NOT get the heater wet or use in areas of high condensation.
- DO NOT allow the power lead to touch hot surfaces.
- DO NOT connect other appliances to the same mains socket as the heater.
- Only use the heater in an level position.
- Do not use this heater with a programmable timer used to switch it on automatically.

## **SERVICE & REPAIRS**

- Have your appliance repaired by a qualified person using identical replacement parts. This will ensure that the safety of the appliance is maintained.

## ELECTRICAL CONNECTIONS



**WARNING: READ THESE ELECTRICAL SAFETY INSTRUCTIONS THOROUGHLY BEFORE CONNECTING THE PRODUCT TO THE MAINS SUPPLY.**

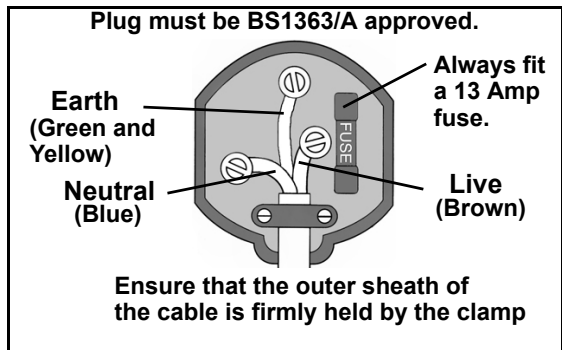
Connect the mains lead to a standard, 230 Volt (50Hz) electrical supply through an approved 13 amp BS 1363 plug, or a suitably fused isolator switch. If the plug has to be changed because it is not suitable for your socket, or because of damage, it must be removed and a replacement fitted, following the wiring instructions shown below. The old plug must be discarded safely, as insertion into a power socket could cause an electrical hazard.



**WARNING: THE WIRES IN THE POWER CABLE OF THIS PRODUCT ARE COLOURED IN ACCORDANCE WITH THE FOLLOWING CODE:  
BLUE = NEUTRAL    BROWN = LIVE    YELLOW AND GREEN = EARTH**

If the colours of the wires in the power cable do not agree with the markings on the plug.

- The BLUE wire must be connected to the terminal which is marked N or coloured black.
- The BROWN wire must be connected to the terminal which is marked L or coloured red.
- The YELLOW AND GREEN wire must be connected to the terminal which is marked E or  $\perp$  or coloured green.



**We strongly recommend that this machine is connected to the mains supply through a Residual Current Device (RCD)**

If you are not sure, consult a qualified electrician. DO NOT try to do any repairs.

# OPERATION

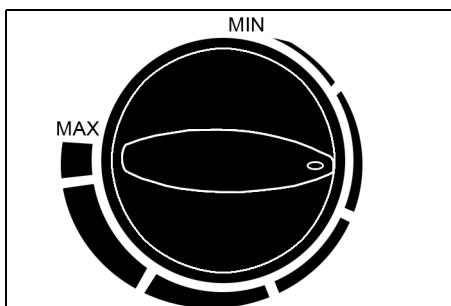


**WARNING: DO NOT USE THIS HEATER IN SMALL ROOMS WHEN THEY ARE OCCUPIED BY PERSONS NOT CAPABLE OF LEAVING THE ROOM ON THEIR OWN, UNLESS CONSTANT SUPERVISION IS PROVIDED.**



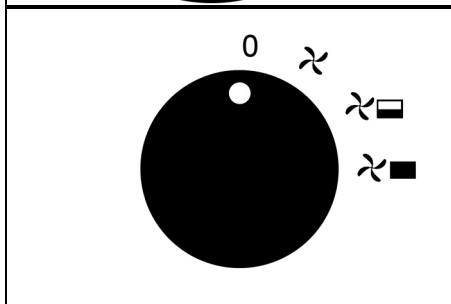
**CAUTION: SOME PARTS OF THIS PRODUCT CAN BECOME VERY HOT AND CAUSE BURNS. PARTICULAR ATTENTION HAS TO BE GIVEN WHERE CHILDREN AND VULNERABLE PEOPLE ARE PRESENT.**

1. Put the heater in a level position on a flat surface and at a safe distance from flammable materials. Keep a minimum of 2m clearance all round.
2. Connect the heater to a suitable power supply.
3. Set the thermostat control to the maximum setting (fully clockwise).



4. Set the mode selector to one of the 3 settings:

0	Off
	Fan Only
	Fan + Heat Setting 1
	Fan + Heat Setting 2



- The heater will take up to three minutes to reach optimum temperature.
5. Once the room reaches the required temperature, turn the thermostat control slowly counter-clockwise until the thermostat clicks, leave the control in this position.

- The room temperature will be maintained at this setting. The heater will continue to operate until the power switch is turned to the OFF position.
6. For fan only operation, turn the power switch to the fan only setting and set the thermostat to its minimum setting.
  7. When not in use, disconnect the heater from the mains supply. Store it in a safe, dry, childproof location.

### **ADJUSTING THE ANGLE**

1. Loosen both handwheels.
2. Adjust to the the required angle.
3. Retighten the handwheels.



---

## **SAFETY SYSTEMS**

---

### **THERMOSTATIC PROTECTION**

The Devil 7003 has a thermal cut out to prevent the unit from overheating.

If the temperature of the front grille gets too high the thermal cutout will turn off the heating elements. When the fan has cooled the unit sufficiently, normal operation will resume.



---

# MAINTENANCE

---



**WARNING: ALWAYS DISCONNECT FROM THE POWER SUPPLY AND ALLOW THE HEATER IT TO COOL DOWN BEFORE PERFORMING ANY MAINTENANCE TASKS.**

- 
- Clean the heater with a soft damp cloth, Do not use solvents or abrasives.
  - Make sure that the heater grill is not blocked.
  - No other maintenance is required, should you discover any problem with the heater, return it to the Clarke service department for repair.

---

# SPECIFICATIONS

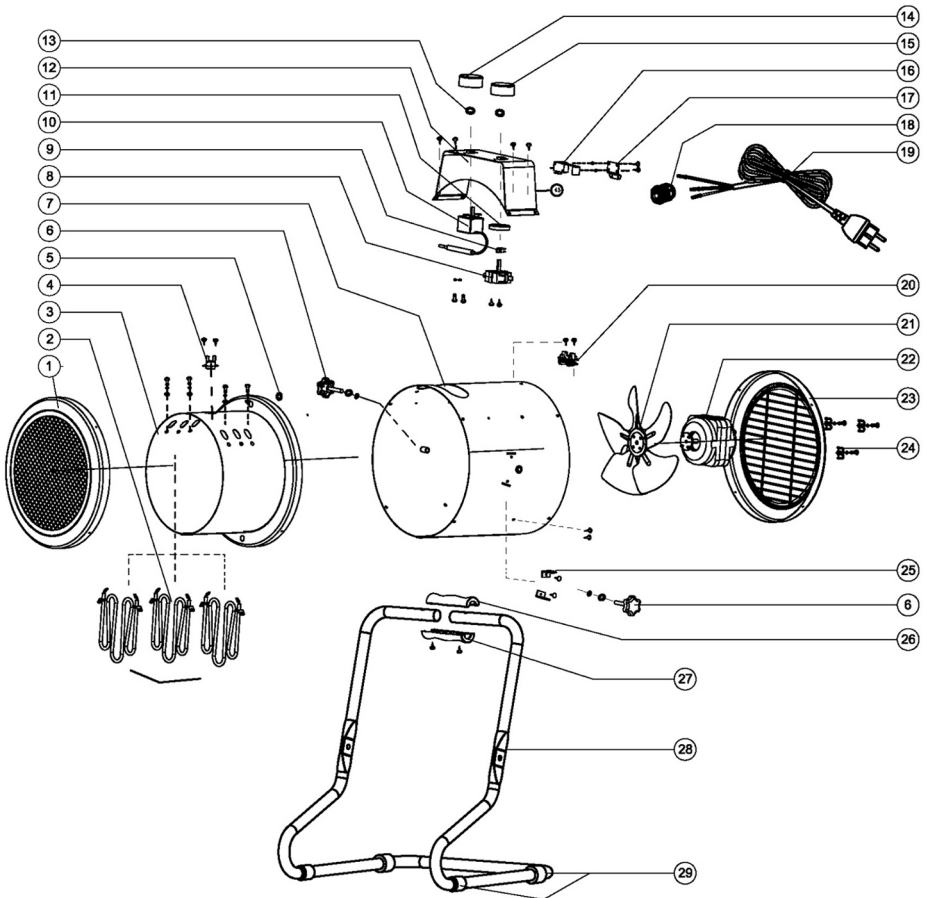
---

Operating Voltage and Frequency: (V / Hz)	230 V / 50Hz
Operating Temperature: (Min/Max) (°C):	0-40°C
Heat Output: (kW):	3 kW
Air Output: (m <sup>3</sup> /h)	400m <sup>3</sup> /h
Safety Device:	Thermal cut-out
Duty Cycle Classification:	Continuous duty
Electrical Insulation Class	I
Product: Depth x Width x Height	302 x 334 x 390 mm
Product Weight	5.6 kg

## TROUBLE SHOOTING

<b>Problem</b>	<b>Possible Cause</b>	<b>Remedy</b>
Heater does not operate, although plugged in with the switch and thermostat switched on.	Plug is loose/bad connection.	Pull the plug out & check the connection of the plug and socket.
	Fuse blown or circuit breaker trips.	Replace if necessary and investigate cause. If fuse blows repeatedly, consult your Clarke dealer.
	No power at socket outlet	Insert the plug in a functioning socket
Heating element glowing hot.	Input voltage too high.	Use a power supply in accordance with the rating on the label.
	Air inlet grille is blocked	Ensure the heater is kept away from any objects which could cover the air inlet or be drawn into it.
The unit has failed to heat up so only the air fan has operated.	Control switch not set at a "HEATING" level.	Turn switch to a heating level.
	Thermostat has tripped.	Turn the thermostat and listen. If there is no CLICK and the thermostat is not damaged, the heater will automatically switch ON when it has cooled down.
Abnormal noise.	Heater is not level.	Stand heater on a level surface

# PARTS DIAGRAM



## PARTS LIST

1	Front Grille	16	Tilt Over Switch
2	Heating Elements	17	Fix Part For Tilt Switch
3	Chassis Panel	18	Supply Cable Entry
4	Thermal Cut Out	19	Power Cable
5	Bush	20	Retaining Clips
6	Adjustable Knob	21	Fan
7	House Casing	22	Motor
8	Speed Controller	23	Rear Grille
9	Location Part For Switch	24	Securing Plate
10	Temperature Controller	25	Spacer
11	Securing Rings	26	Plastic Handle Upper
12	Control Box	27	Plastic Handle Bottom
13	Fasten Spring	28	Frame Handle
14	Thermostat Knob	29	Foot Sleeve
15	Switch Knob	30	Screws

Part number = (CXDEV7003 + the number of the part)

# DECLARATION OF CONFORMITY



**Clarke**<sup>®</sup>  
**INTERNATIONAL**

Hemnall Street, Epping, Essex CM16 4LG

## DECLARATION OF CONFORMITY

**This is an important document and should be retained.**

**We hereby declare that this product(s) complies with the following directive(s):**

2014/30/EU *Electromagnetic Compatibility Directive.*

2014/35/EU *Low Voltage Equipment Directive.*

2011/65/EU *Restriction of Hazardous substances.*

**The following standards have been applied to the product(s):**

*EN 60335-2-30:2009 +A11:2012, EN 60335-1:2002 +AC:2014+A11:2014, EN 62233:2008,*

*EN 55014-1:2006 +A1:2009 +A2:2011, EN 55014-2:1997 +A1:2001 +A2:2008,*

*EN 61000-3-2:2014, EN 61000-3-3:2013.*

The technical documentation required to demonstrate that the product(s) meet(s) the requirement(s) of the aforementioned directive(s) has been compiled and is available for inspection by the relevant enforcement authorities.

The CE mark was first applied in: 2009

**Product Description:** Electric heater  
**Model number(s):** Devil 7003  
**Serial / batch Number:** N/A  
**Date of Issue:** 25/05/2017

**Signed:**

**J.A. Clarke**  
**Director**

# OTHER HEATERS IN THE CLARKE RANGE

## 1 - 6 Oil Filled Radiators

- ◆ Great for office, home or workshop use
- ◆ Adjustable thermostat ◆ Variable heat settings
- ◆ 2kW & 2.5kW models feature 24 hr timer
- ◆ Overheating protection ◆ Neon switches
- ◆ All radiators include cord storage, tilt protection switch & castors (except model OFR 9/90 - carry handle)

Model	Fins	Wattage	Dims (LWH)mm	Weight	Part No.
1 OFR 9/90	9	900W	430x140x370	5.3kg	6934003
2 OFR 7/150	7	1.5kW	350x250x630	9.2kg	6934001
3 OFR 9/200	9	2kW	430x250x630	11.2kg	6934005
4 OFR 13/250	13	2.5kW	580x250x630	15.3kg	6934007
5 BR 9/200	9	2kW	430x250x630	11.2kg	6934009
6 BR 13/250	13	2.5kW	580x250x630	15.3kg	6934011

## Turbo Fan Powered Propane Gas Heaters

- ◆ Ideal for low cost highly efficient heating in garages, workshops, warehouses, factories etc. ◆ Comply with British and European standards ◆ Propane gas fired
- ◆ Fuel safety cut out in the event of overheat, flame or power failure
- ◆ Portable and extremely durable ◆ Complete with regulator and gas hose ◆ Variable output on all machines except Little Devil, Little Devil SS, Devil 650 & Devil 660 SS ◆ All units dual voltage 110/230V except Little Devil, Little Devil SS, Devil 650 & Devil 660 SS ◆ Little Devil SS, Devil 660 SS, Devil 860 SS & Devil 1260 SS have a corrosion resistant stainless steel casing

**1 LITTLE DEVIL**  
1 & 2 230V

**2 DEVIL 650**

**3 DEVIL 850**

**4 DEVIL 1250**

**5 DEVIL 1850**

**6 DEVIL 3000**

**7 DEVIL 3150**

**3 - 7 Dual Voltage 110/230V**

**Full Safety Cuts Out On Flame Failure**

**Wheel Mounted**

**All models include gas hose & regulator**

# OTHER HEATERS IN THE CLARKE RANGE



## 1 - 5 Devil Series Industrial Electric Fan Heaters

Rugged fan heaters, ideal for small to medium sized premises such as workshops, garages, industrial units, factories & warehouses. ♦ Tough steel cabinet with durable enamelled finish ♦ Encapsulated stainless steel heating elements ♦ Insulated handles for safe handling ♦ Safety thermostat guards against overheating ♦ Adjustable heat output with thermostat to achieve desired room temperature.

Glow is for illustration purposes only.

Model	1 DEVIL 6002	2 DEVIL 6003	3 DEVIL 6005	4 DEVIL 6009	5 DEVIL 6015
Voltage	230v 1ph	230v 1ph	400v 3ph	400v 3ph	400v 3ph
Heat Output	0.7-2kW	1.5-3kW	2.5-5kW	4.5-9kW	5-10-15kW
Air Output	120m <sup>3</sup> /H	512m <sup>3</sup> /H	557m <sup>3</sup> /H	773m <sup>3</sup> /H	1559m <sup>3</sup> /H
Weight kg	3.6	5.5	6.2	9	14.4
Dims LxWxH mm	225x200x425	295x265x425	295x305x425	350X335X465	400X345X535
Part No.	6925218	6925220	6925225	6925230	6925235

## Mains Connecting Leads for Devil Electric Fan Heaters

### 6 DCL16A

16amp. lead for 5kW & 9kW heaters. Part No. 6925232

### 7 DCL32A

32amp. lead for 15kW heaters. Part No 6925237



## 1 - 5 Paraffin/Diesel Fired Space Heaters

This superb new range is ideal for fast, efficient heating in warehouses, factories, automotive workshops etc.

- ♦ Variable heat control with thermostat - heater cycles on/off as heat is required
- ♦ Wheels & handles included on all models (No wheels on XR60)
- ♦ Big fuel tanks - up to 53 litres ♦ Greater run times - up to 13.5 hours operation
- ♦ Stainless Steel combustion chamber ♦ Direct fired paraffin or diesel
- ♦ Highly efficient air & fuel filters ensure long term reliability
- ♦ 230v/1phase ♦ Automatic flame failure cut out

- 1 - 5
- ✓ Thermostatic On/Off Control
- ✓ Variable Heat Output

Model	Max kW	Max BTU/HR	Tank Cap.	Approx hrs per Tank	Dimensions LxWxH (mm)	Wt. kg	Part No.
1 XR60	14.7	50,000	15 litres	9	774x300x388	12.4	6931002
2 XR80	20.5	70,000	22.7 litres	12	830x410x648	17.6	6931004
3 XR110	29.3	100,000	32 litres	11	905x413x700	19.8	6931006
4 XR160	46.9	160,000	53 litres	13	1045x528x692	26.1	6931008
5 XR210	61.5	210,000	53 litres	13.5	1030x523x692	26.2	6931012

Other heaters in stock include: Quartz Halogen, Infra-Red, Ceramic and Gas.

# A SELECTION FROM THE VAST RANGE OF

# Clarke®

## QUALITY PRODUCTS

### AIR COMPRESSORS

From DIY to industrial, Plus air tools, spray guns and accessories.

### GENERATORS

Prime duty or emergency standby for business, home and leisure.

### POWER WASHERS

Hot and cold, electric and engine driven - we have what you need

### WELDERS

Mig, Arc, Tig and Spot. From DIY to auto/industrial.

### METALWORKING

Drills, grinders and saws for DIY and professional use.

### WOODWORKING

Saws, sanders, lathes, mortisers and dust extraction.

### HYDRAULICS

Cranes, body repair kits, transmission jacks for all types of workshop use.

### WATER PUMPS

Submersible, electric and engine driven for DIY, agriculture and industry.

### POWERTOOLS

Angle grinders, cordless drill sets, saws and sanders.

### STARTERS/CHARGERS

All sizes for car and commercial use.



**PARTS & SERVICE: 0208 988 7400**

**E-mail: [Parts@clarkeinternational.com](mailto:Parts@clarkeinternational.com) or [Service@clarkeinternational.com](mailto:Service@clarkeinternational.com)**

**SALES: UK 01992 565333 or Export 00 44 (0)1992 565335**

**Clarke® INTERNATIONAL** Hemnall Street, Epping, Essex CM16 4LG  
[www.clarkeinternational.com](http://www.clarkeinternational.com)