

## BS 2640 MT 3~ 226

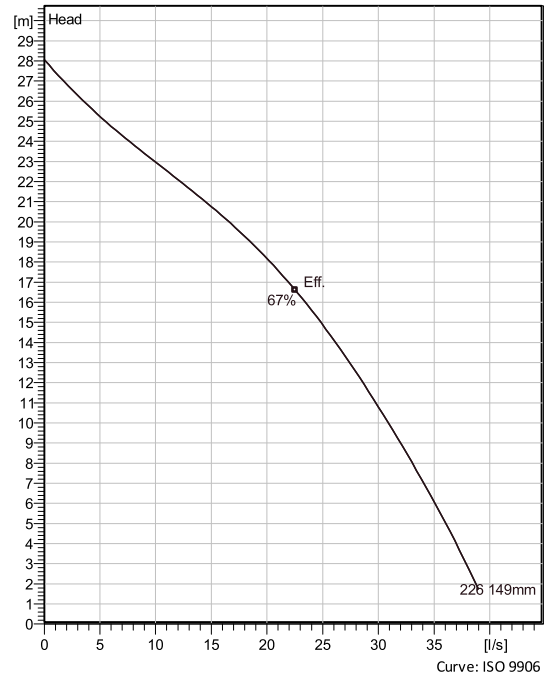
Portable pumps ideal for applications in which the water or liquid contains concentrations of abrasives.



### Technical specification



Curves according to: Water, pure ,4 °C,999.9 kg/m<sup>3</sup>,1.5692 mm<sup>2</sup>/s



### Configuration

<b>Motor number</b> B2640.181 15-14-2BB-W 5.6KW	<b>Installation type</b> S - Portable Semi permanent, Wet
<b>Impeller diameter</b> 149 mm	<b>Discharge diameter</b> 100 m

### Pump information

<b>Impeller diameter</b> 149 mm
<b>Discharge diameter</b> 100 m
<b>Inlet diameter</b> 100 mm
<b>Maximum operating speed</b> 2895 rpm
<b>Number of blades</b> 2
<b>Max. fluid temperature</b> 40 °C

### Materials

<b>Impeller</b> Hard-Iron
<b>Stator housing material</b> Aluminium

Project  
Block

Created by Joshua Harvey  
Created on 2/11/2021 Last update 2/11/2021

# BS 2640 MT 3~ 226

## Technical specification



### Motor - General

<b>Motor number</b> B2640.181 15-14-2BB-W 5.6KW	<b>Phases</b> 3~	<b>Rated speed</b> 2895 rpm	<b>Rated power</b> 5.6 kW
<b>ATEX approved</b> No	<b>Number of poles</b> 2	<b>Rated current</b> 11 A	<b>Stator variant</b> 1
<b>Frequency</b> 50 Hz	<b>Rated voltage</b> 400 V	<b>Insulation class</b> H	<b>Type of Duty</b> S1
<b>Version code</b> 181			

### Motor - Technical

<b>Power factor - 1/1 Load</b> 0.87	<b>Motor efficiency - 1/1 Load</b> 84.2 %	<b>Total moment of inertia</b> 0.0131 kg m <sup>2</sup>	<b>Starts per hour max.</b> 30
<b>Power factor - 3/4 Load</b> 0.81	<b>Motor efficiency - 3/4 Load</b> 85.1 %	<b>Starting current, direct starting</b> 78 A	
<b>Power factor - 1/2 Load</b> 0.69	<b>Motor efficiency - 1/2 Load</b> 84.1 %	<b>Starting current, star-delta</b> 26 A	

**Project**  
**Block**

**Created by** Joshua Harvey  
**Created on** 2/11/2021 **Last update** 2/11/2021

# BS 2640 MT 3~ 226

## Performance curve

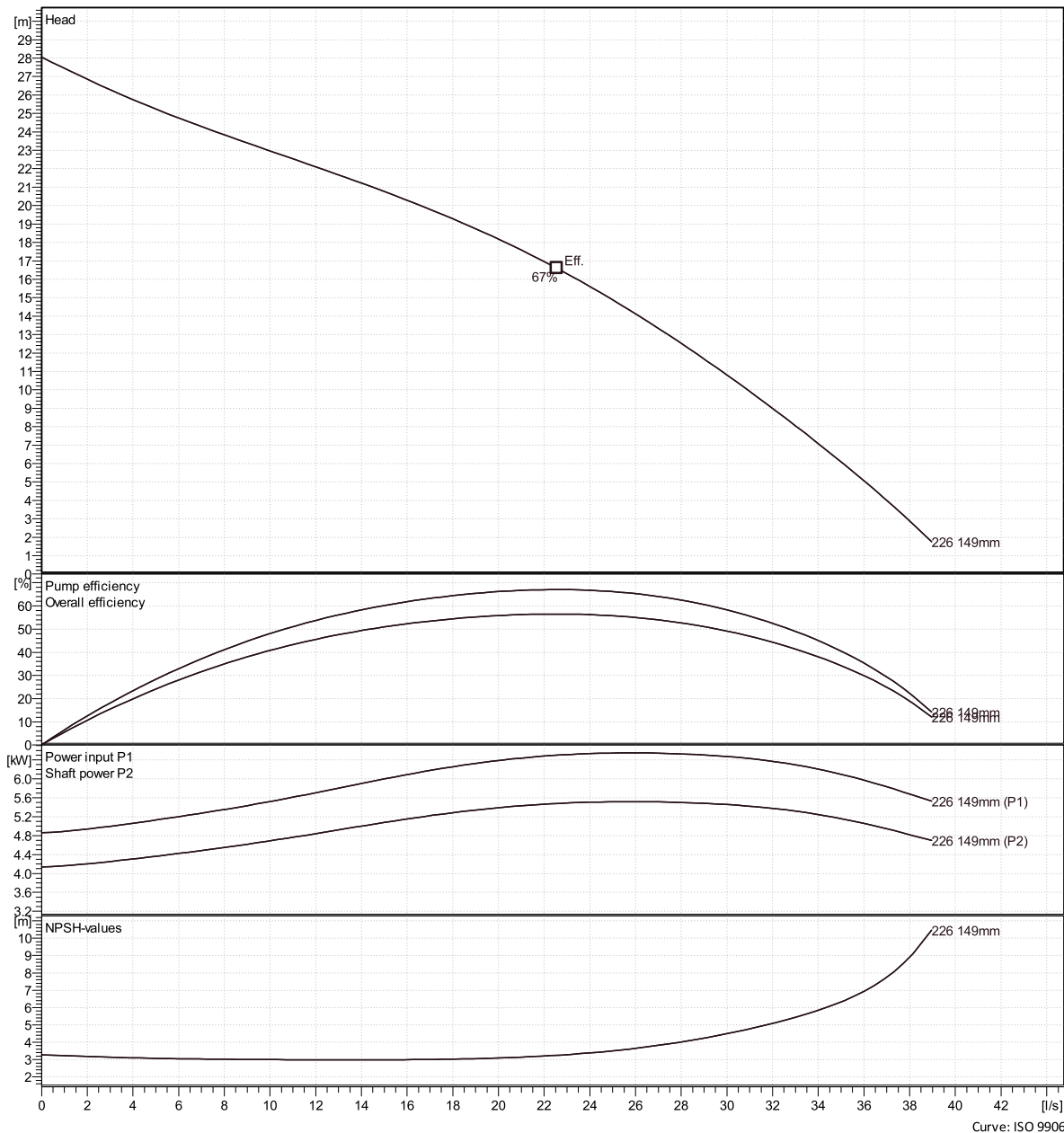


### Duty point

Flow

Head

Curves according to: Water, pure 4 °C, 999.9 kg/m<sup>3</sup>, 1.5692 mm<sup>2</sup>/s



Project

Created by

Joshua Harvey

Block

Created on

2/11/2021

Last update

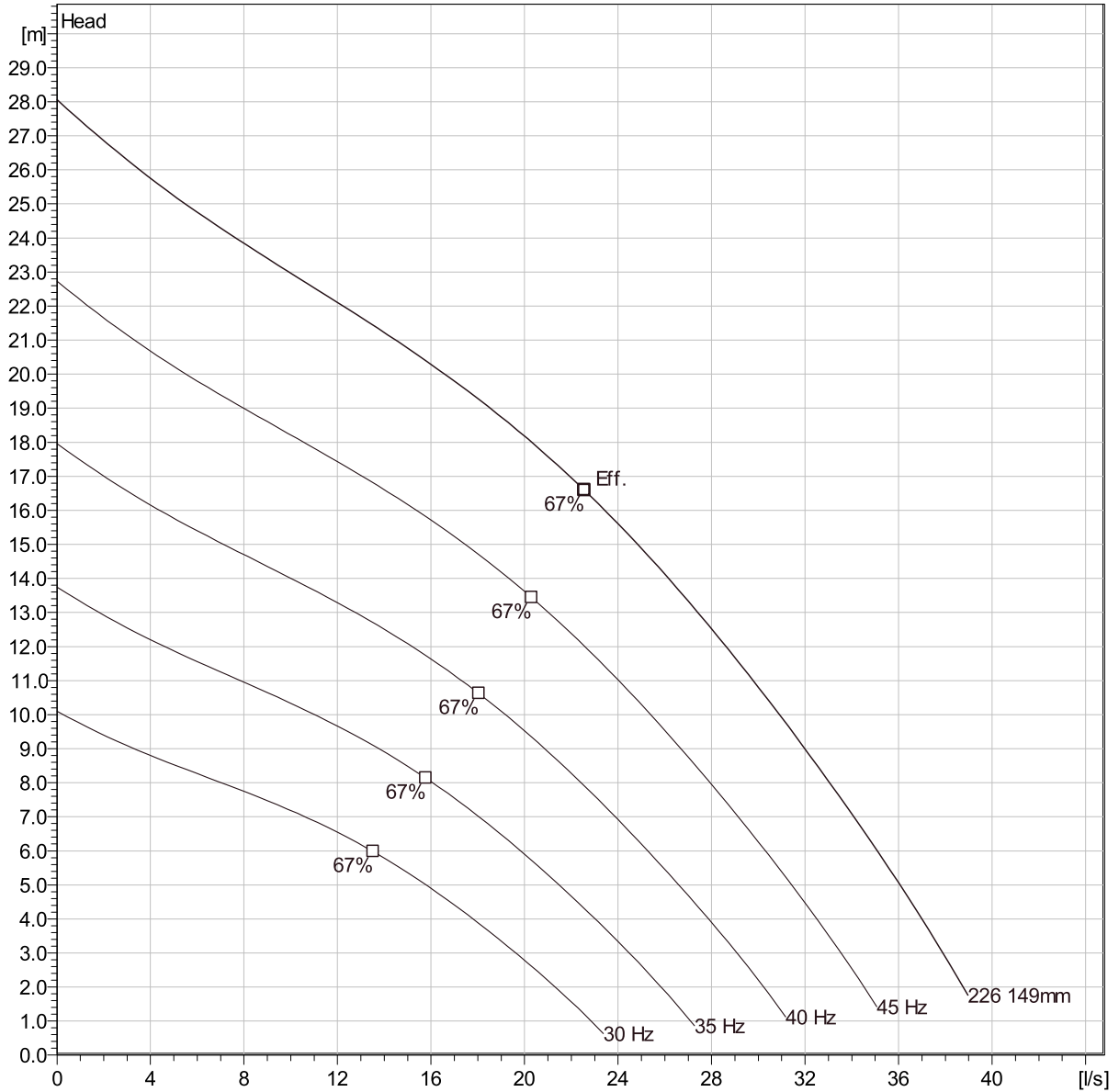
2/11/2021

# BS 2640 MT 3~ 226

## Duty Analysis



Curves according to: Water, pure, 4 °C, 999.9 kg/m<sup>3</sup>, 1.5692 mm<sup>2</sup>/s



### Operating characteristics

Pumps / Systems	Flow	Head	Shaft power	Flow	Head	Shaft power	Hydr.eff.	Specific Energy	NPSHre
-----------------	------	------	-------------	------	------	-------------	-----------	-----------------	--------

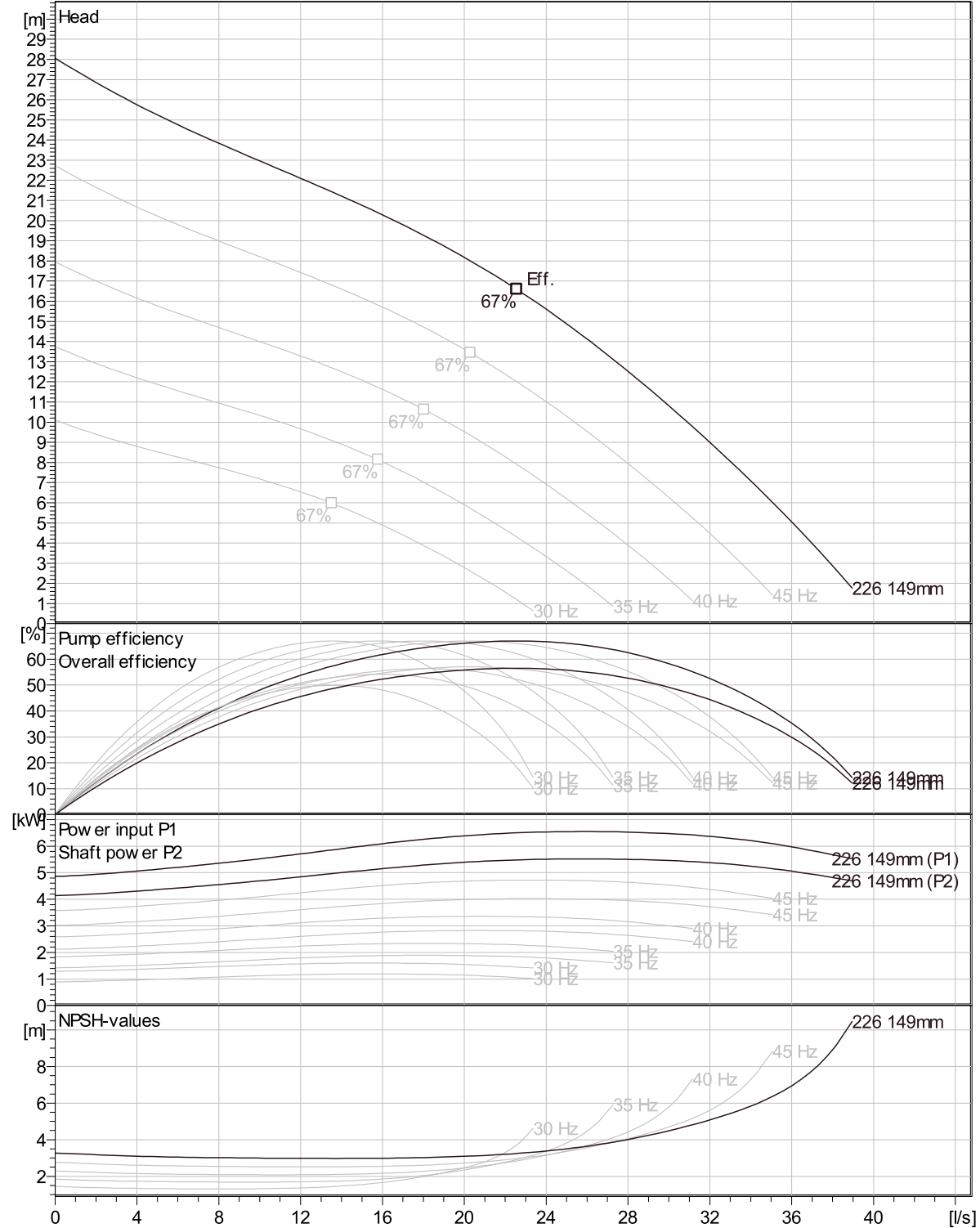
Project	Created by	Joshua Harvey
Block	Created on	2/11/2021
	Last update	2/11/2021

# BS 2640 MT 3~ 226

## VFD Curve



Curves according to: Water, pure, 4 °C, 999.9 kg/m<sup>3</sup>, 1.5692 mm<sup>2</sup>/s

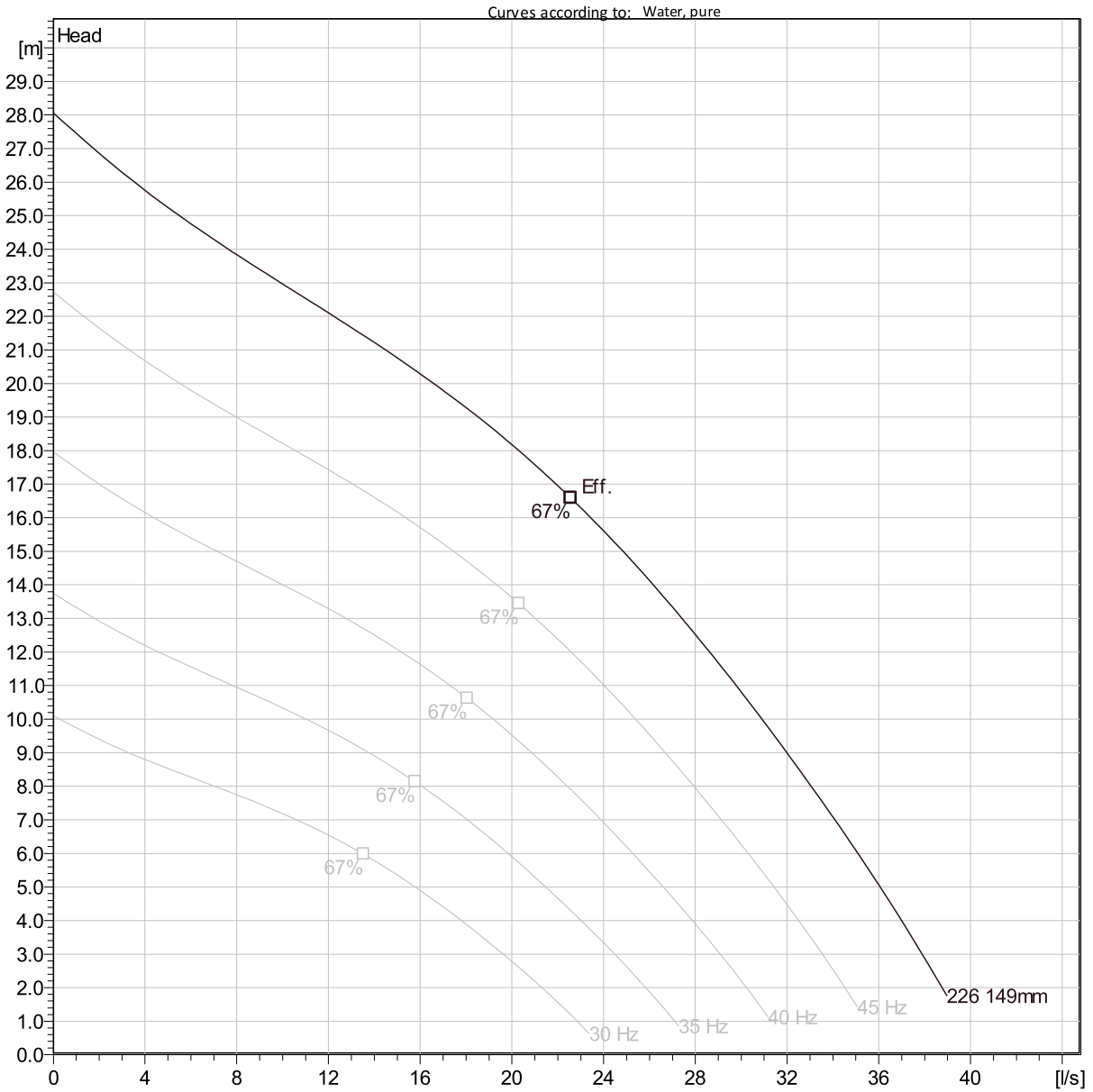


Project	Created by	Joshua Harvey
Block	Created on	2/11/2021
	Last update	2/11/2021

Curve: ISO 9906

# BS 2640 MT 3~ 226

## VFD Analysis



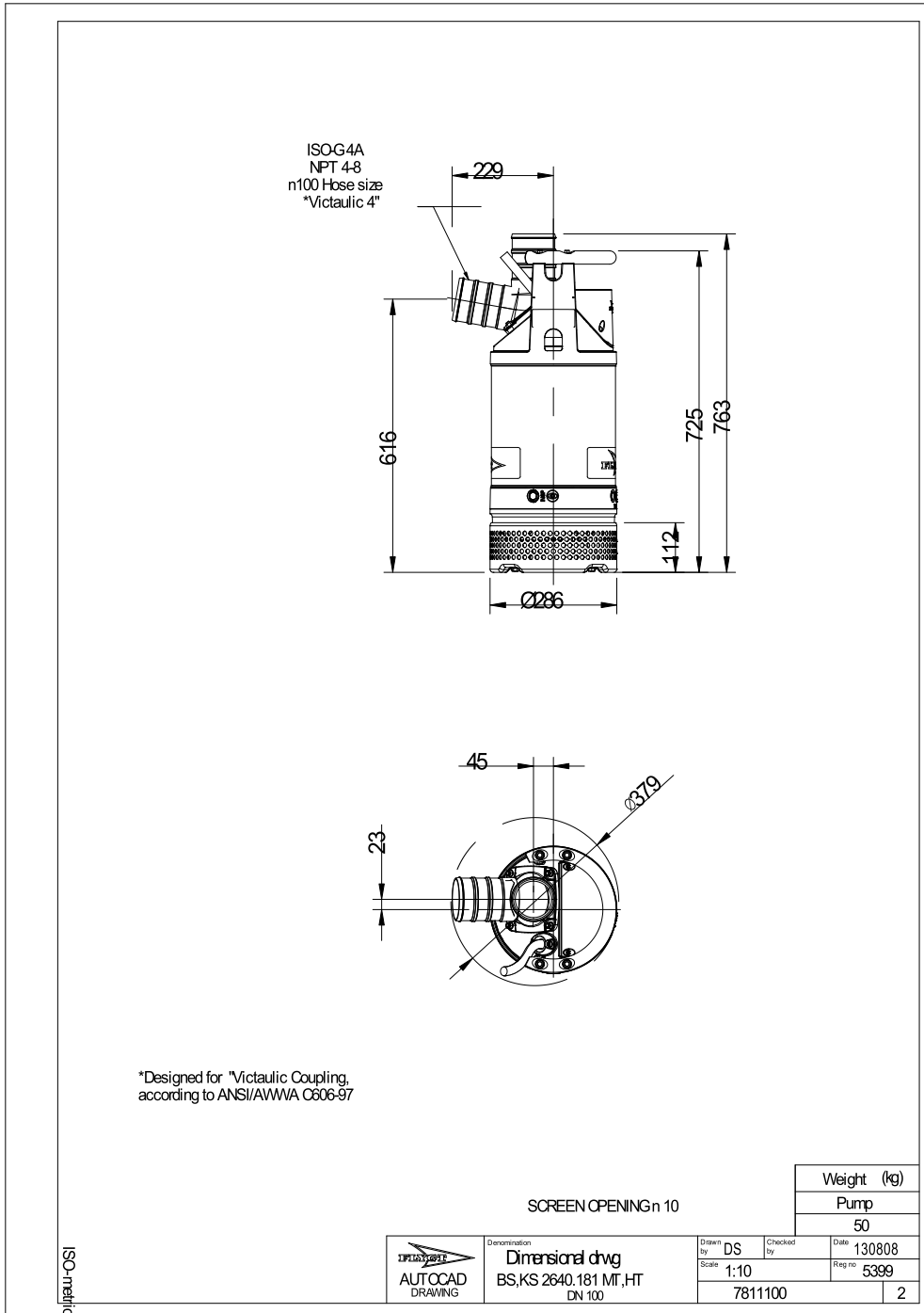
### Operating characteristics

Pumps / Systems	Frequency	Flow	Head	Shaft power	Flow	Head	Shaft power	Hydr.eff.	Specific Energy	NPSHre
-----------------	-----------	------	------	-------------	------	------	-------------	-----------	-----------------	--------

Project	Created by	Joshua Harvey
Block	Created on	2/11/2021
	Last update	2/11/2021

# BS 2640 MT 3~ 226

Dimensional drawing



Project  
Block

Created by Joshua Harvey  
Created on 2/11/2021 Last update 2/11/2021