

BS 2630 HT 3~ 251

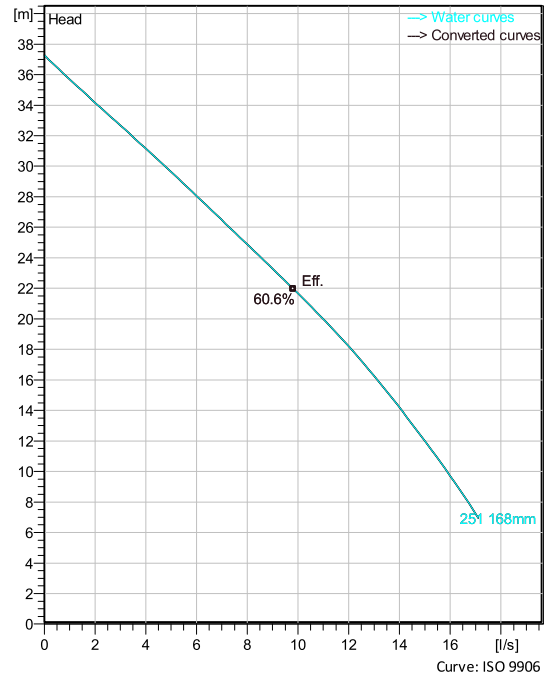
Portable pumps ideal for applications in which the water or liquid contains concentrations of abrasives.



Technical specification



Curves according to: Water, pure ,4 °C,999.9 kg/m³,1.5692 mm²/s



Configuration

Motor number
B2630.181 15-12-2BB-W
3.7KW

Installation type
S - Portable Semi
permanent, Wet

Impeller diameter
168 mm

Discharge diameter
75 m

Pump information

Impeller diameter
168 mm

Discharge diameter
75 m

Inlet diameter
72 mm

Maximum operating speed
2885 rpm

Number of blades
2

Max. fluid temperature
40 °C

Materials

Impeller
Hard-Iron

Stator housing material
Aluminium

Project
Block

Created by Joshua Harvey
Created on 2/9/2021 **Last update** 2/9/2021

BS 2630 HT 3~ 251

Technical specification



Motor - General

Motor number B2630.181 15-12-2BB-W 3.7KW	Phases 3~	Rated speed 2885 rpm	Rated power 3.7 kW
ATEX approved No	Number of poles 2	Rated current 7.3 A	Stator variant 1
Frequency 50 Hz	Rated voltage 400 V	Insulation class H	Type of Duty S1
Version code 181			

Motor - Technical

Power factor - 1/1 Load 0.88	Motor efficiency - 1/1 Load 83.7 %	Total moment of inertia 0.0119 kg m ²	Starts per hour max. 30
Power factor - 3/4 Load 0.82	Motor efficiency - 3/4 Load 85.2 %	Starting current, direct starting 49 A	
Power factor - 1/2 Load 0.70	Motor efficiency - 1/2 Load 84.8 %	Starting current, star-delta 16.3 A	

Project
Block

Created by Joshua Harvey
Created on 2/9/2021 **Last update** 2/9/2021

BS 2630 HT 3~ 251

Performance curve

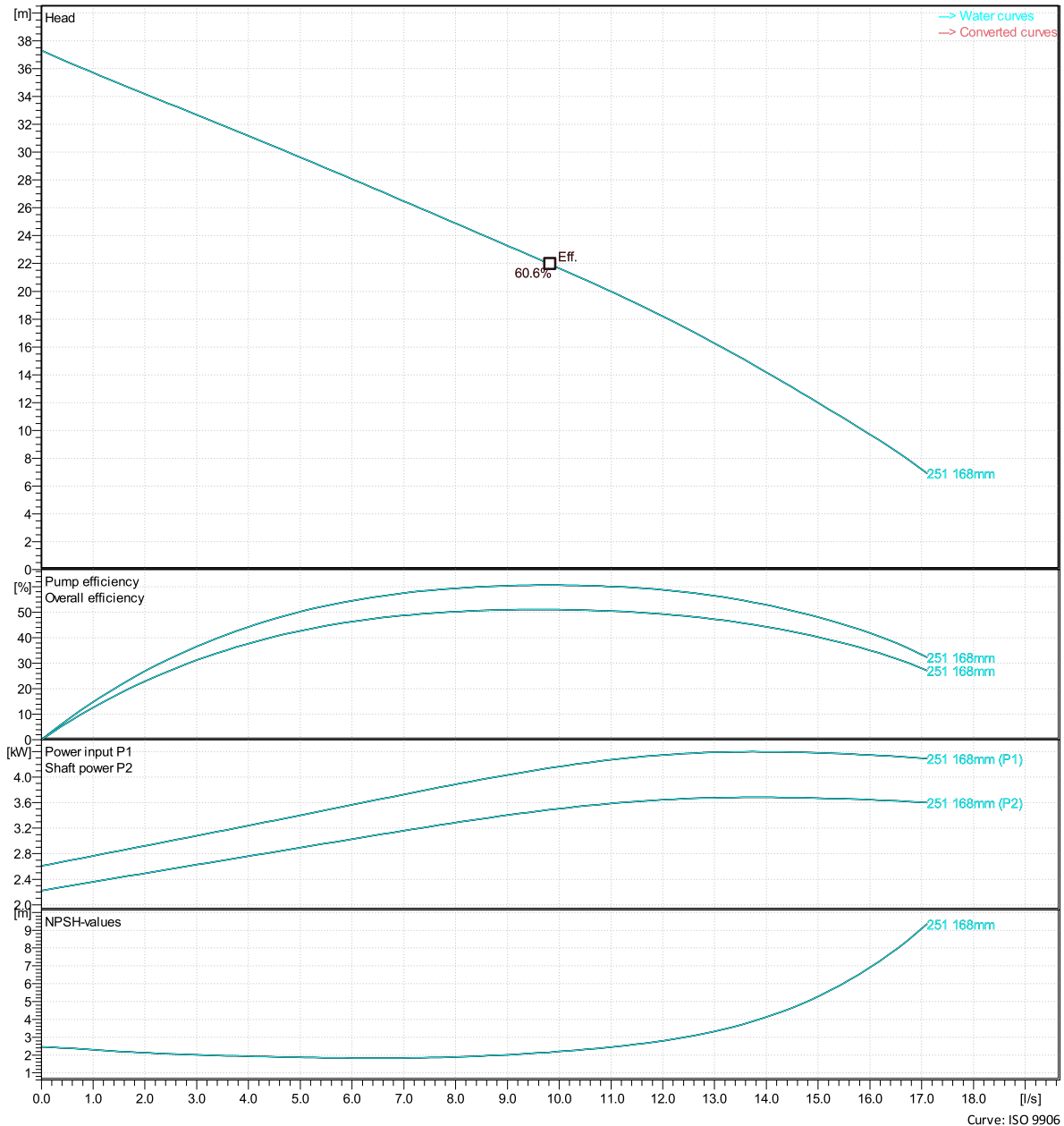


Duty point

Flow

Head

Curves according to: Water, pure 4 °C, 999.9 kg/m³, 1.5692 mm²/s



Curve: ISO 9906

Project
Block

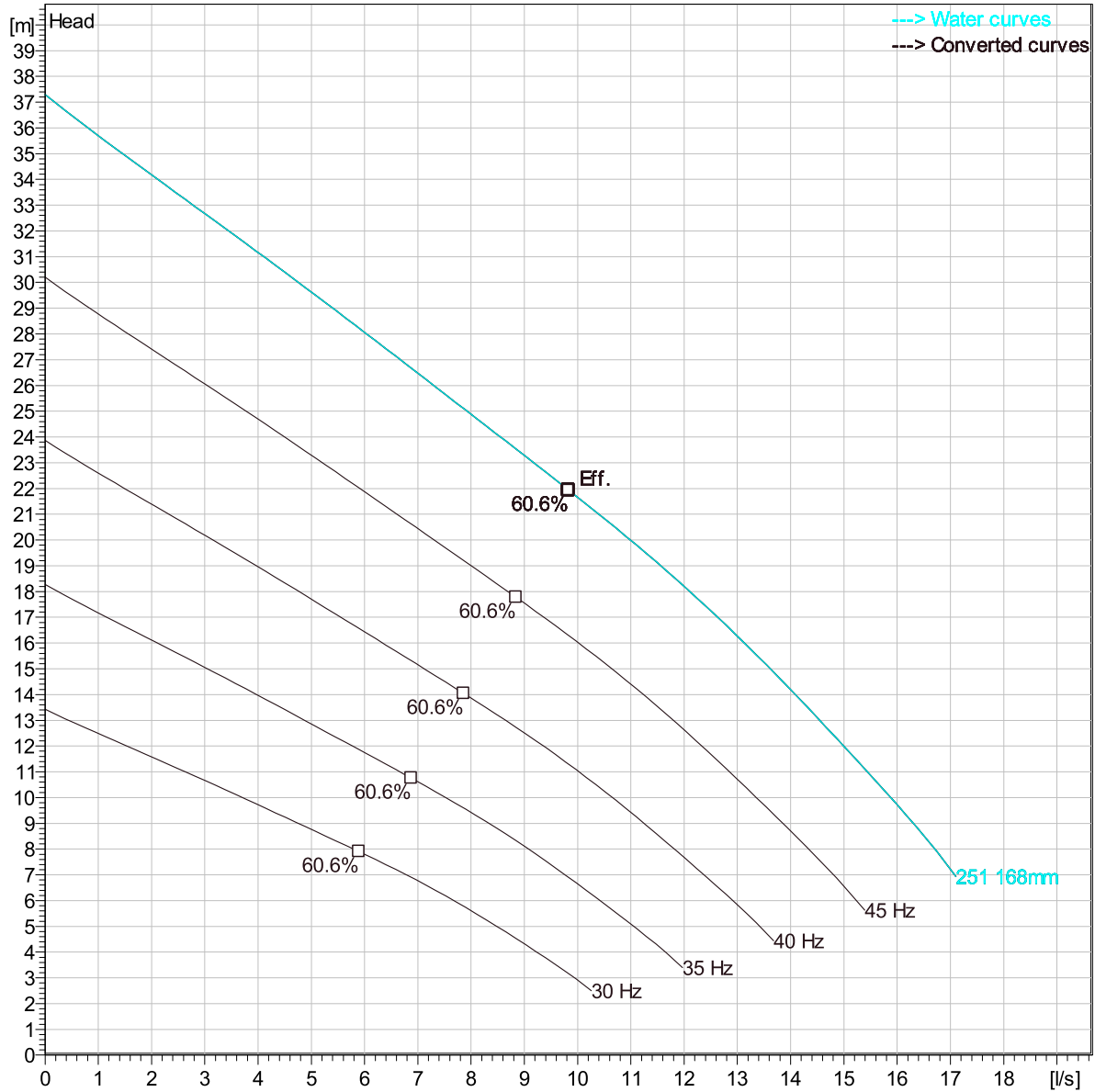
Created by Joshua Harvey
Created on 2/9/2021 Last update 2/9/2021

BS 2630 HT 3~ 251

Duty Analysis



Curves according to: Water, pure, 4 °C, 999.9 kg/m³, 1.5692 mm²/s



Operating characteristics

Pumps / Systems	Flow	Head	Shaft power	Flow	Head	Shaft power	Hydr. eff.	Specific Energy	NPSHre
-----------------	------	------	-------------	------	------	-------------	------------	-----------------	--------

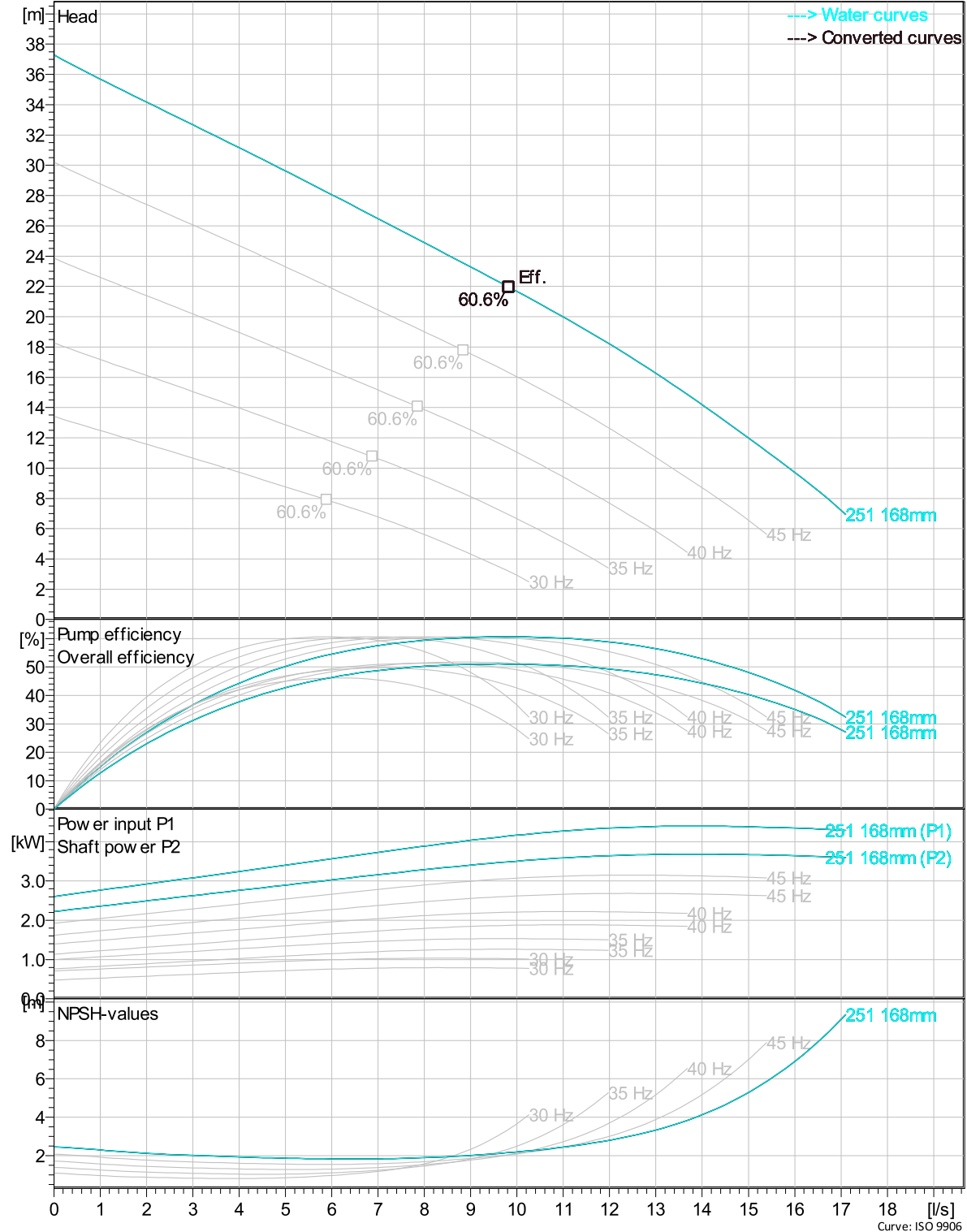
Project	Created by	Joshua Harvey
Block	Created on	2/9/2021
	Last update	2/9/2021

BS 2630 HT 3~ 251

VFD Curve



Curves according to: Water, pure, 4 °C, 999.9 kg/m³, 1.5692 mm²/s

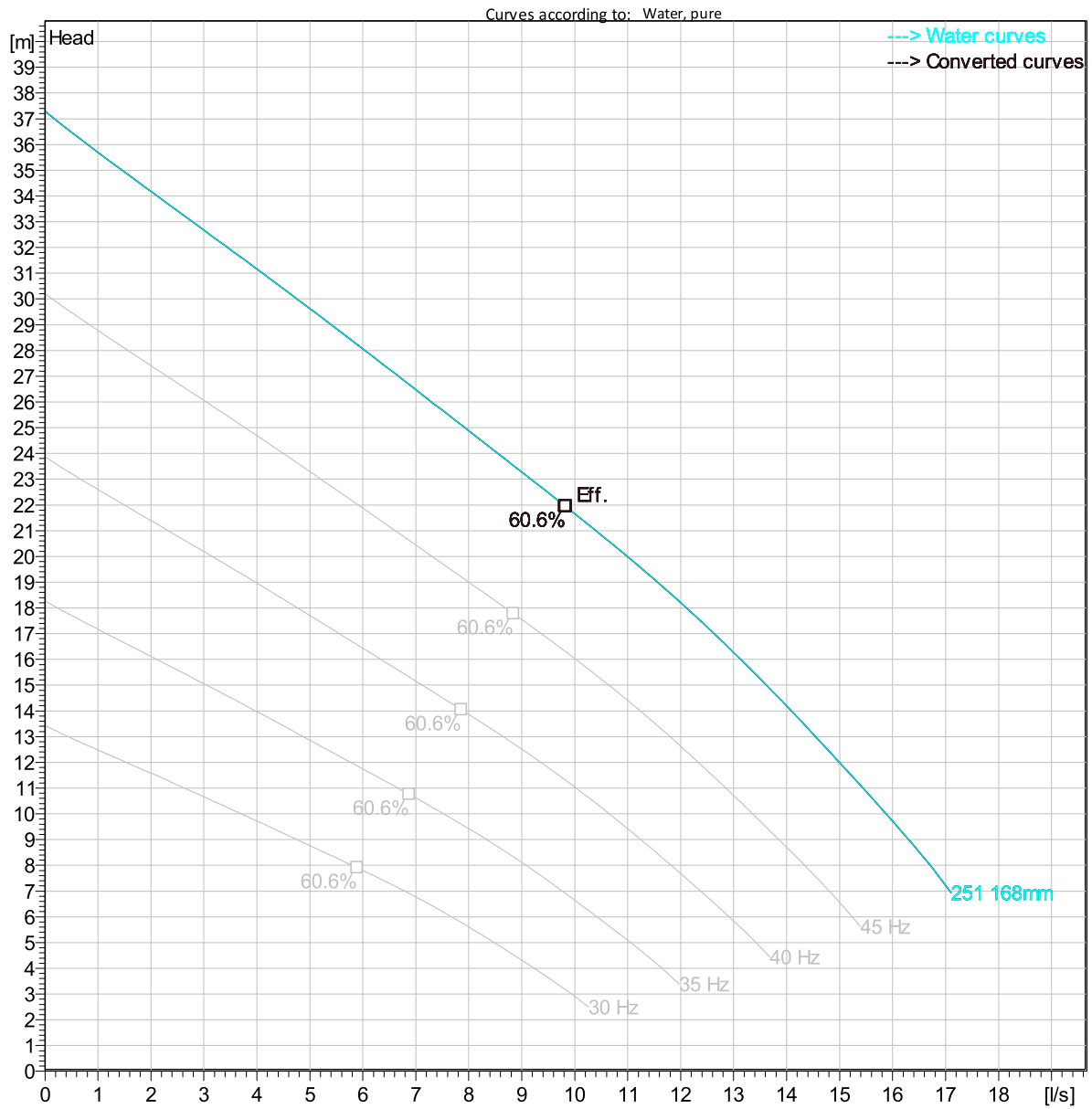


Curve: ISO 9906

Project	Created by	Joshua Harvey	
Block	Created on	2/9/2021	Last update 2/9/2021

BS 2630 HT 3~ 251

VFD Analysis



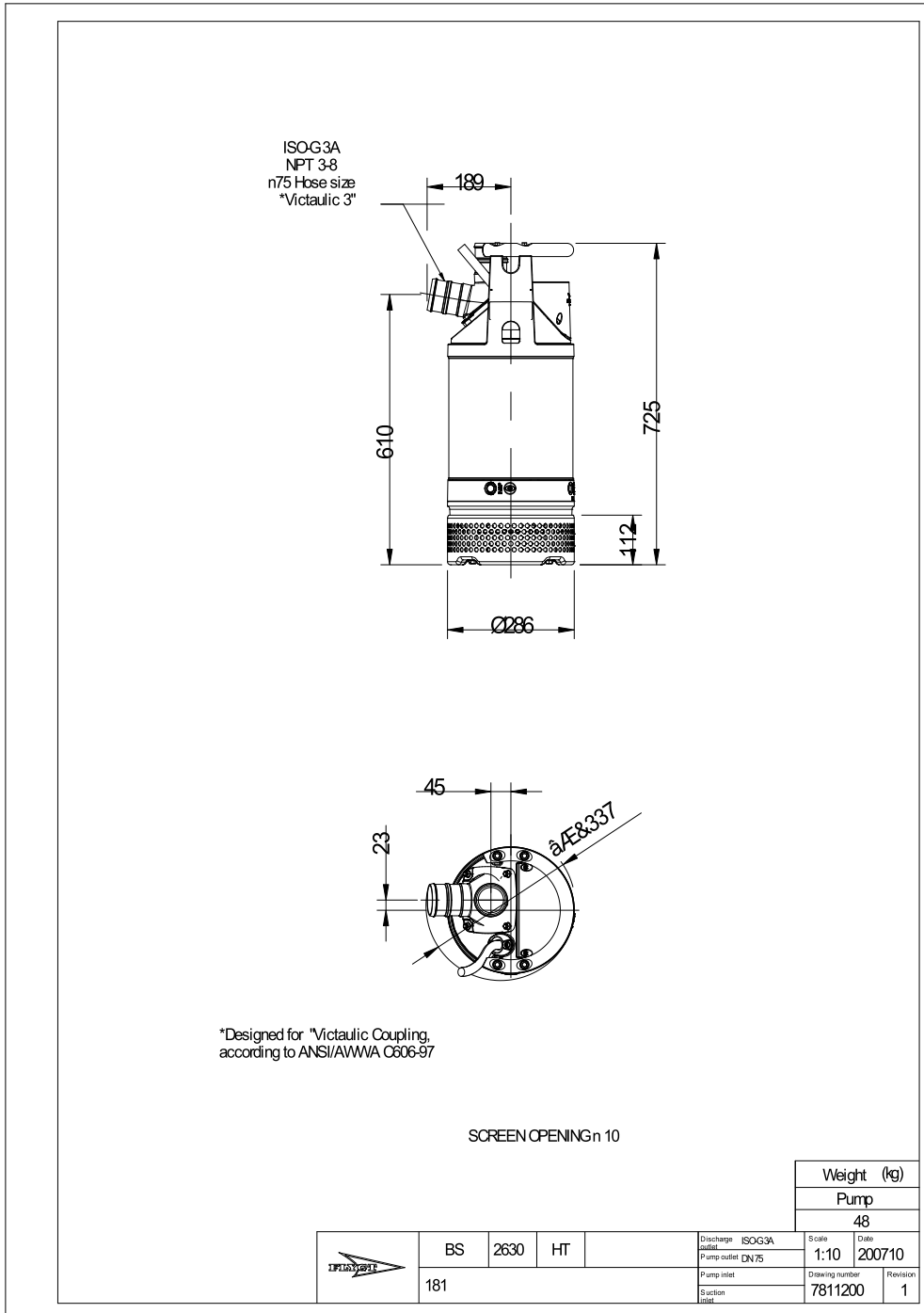
Operating characteristics

Pumps / Systems	Frequency	Flow	Head	Shaft power	Flow	Head	Shaft power	Hydr.eff.	Specific Energy	NPSHre
-----------------	-----------	------	------	-------------	------	------	-------------	-----------	-----------------	--------

Project	Created by	Joshua Harvey
Block	Created on	2/9/2021
	Last update	2/9/2021

BS 2630 HT 3~ 251

Dimensional drawing



Project
Block

Created by Joshua Harvey
Created on 2/9/2021 Last update 2/9/2021