

## BS 2620 MT 3~ 226

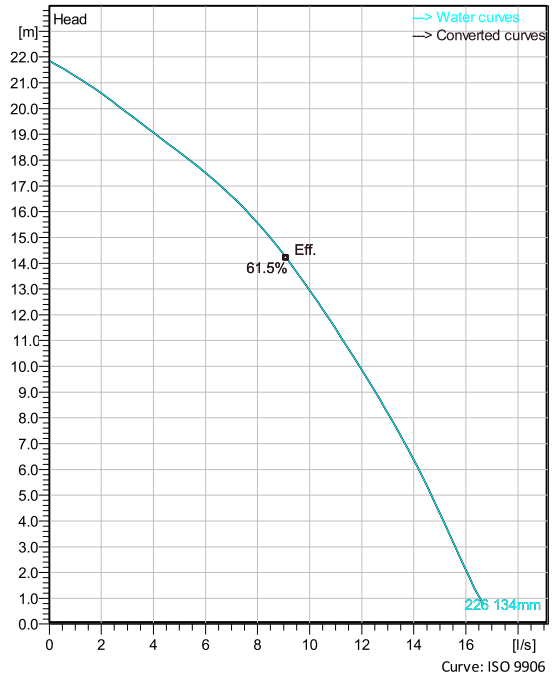
Portable pumps ideal for applications in which the water or liquid contains concentrations of abrasives.



### Technical specification



Curves according to: Water, pure [100%], 4 °C, 999.9 kg/m<sup>3</sup>, 1.5692 mm<sup>2</sup>/s



### Configuration

<b>Motor number</b> B2620.172 13-10-2BB-W 2.2KW	<b>Installation type</b> S - Portable Semi permanent, Wet
<b>Impeller diameter</b> 134 mm	<b>Discharge diameter</b> 75 m

### Pump information

<b>Impeller diameter</b> 134 mm
<b>Discharge diameter</b> 75 m
<b>Inlet diameter</b> 63 mm
<b>Maximum operating speed</b> 2800 rpm
<b>Number of blades</b> 5
<b>Max. fluid temperature</b> 40 °C

### Materials

<b>Impeller</b> Hard-Iron
------------------------------

**Project**  
**Block**

**Created by** Joshua Harvey  
**Created on** 2/9/2021 **Last update** 2/9/2021

# BS 2620 MT 3~ 226

## Technical specification



### Motor - General

<b>Motor number</b> B2620.172 13-10-2BB-W 2.2KW	<b>Phases</b> 3~	<b>Rated speed</b> 2800 rpm	<b>Rated power</b> 2.2 kW
<b>ATEX approved</b> No	<b>Number of poles</b> 2	<b>Rated current</b> 4.7 A	<b>Stator variant</b> 18
<b>Frequency</b> 50 Hz	<b>Rated voltage</b> 400 V	<b>Insulation class</b> F	<b>Type of Duty</b> S1
<b>Version code</b> 172			

### Motor - Technical

<b>Power factor - 1/1 Load</b> 0.88	<b>Motor efficiency - 1/1 Load</b> 79.5 %	<b>Total moment of inertia</b> 0.00433 kg m <sup>2</sup>	<b>Starts per hour max.</b> 15
<b>Power factor - 3/4 Load</b> 0.83	<b>Motor efficiency - 3/4 Load</b> 82.0 %	<b>Starting current, direct starting</b> 27 A	
<b>Power factor - 1/2 Load</b> 0.72	<b>Motor efficiency - 1/2 Load</b> 82.3 %	<b>Starting current, star-delta</b> 8.99 A	

**Project**  
**Block**

**Created by** Joshua Harvey  
**Created on** 2/9/2021 **Last update** 2/9/2021

# BS 2620 MT 3~ 226

## Performance curve

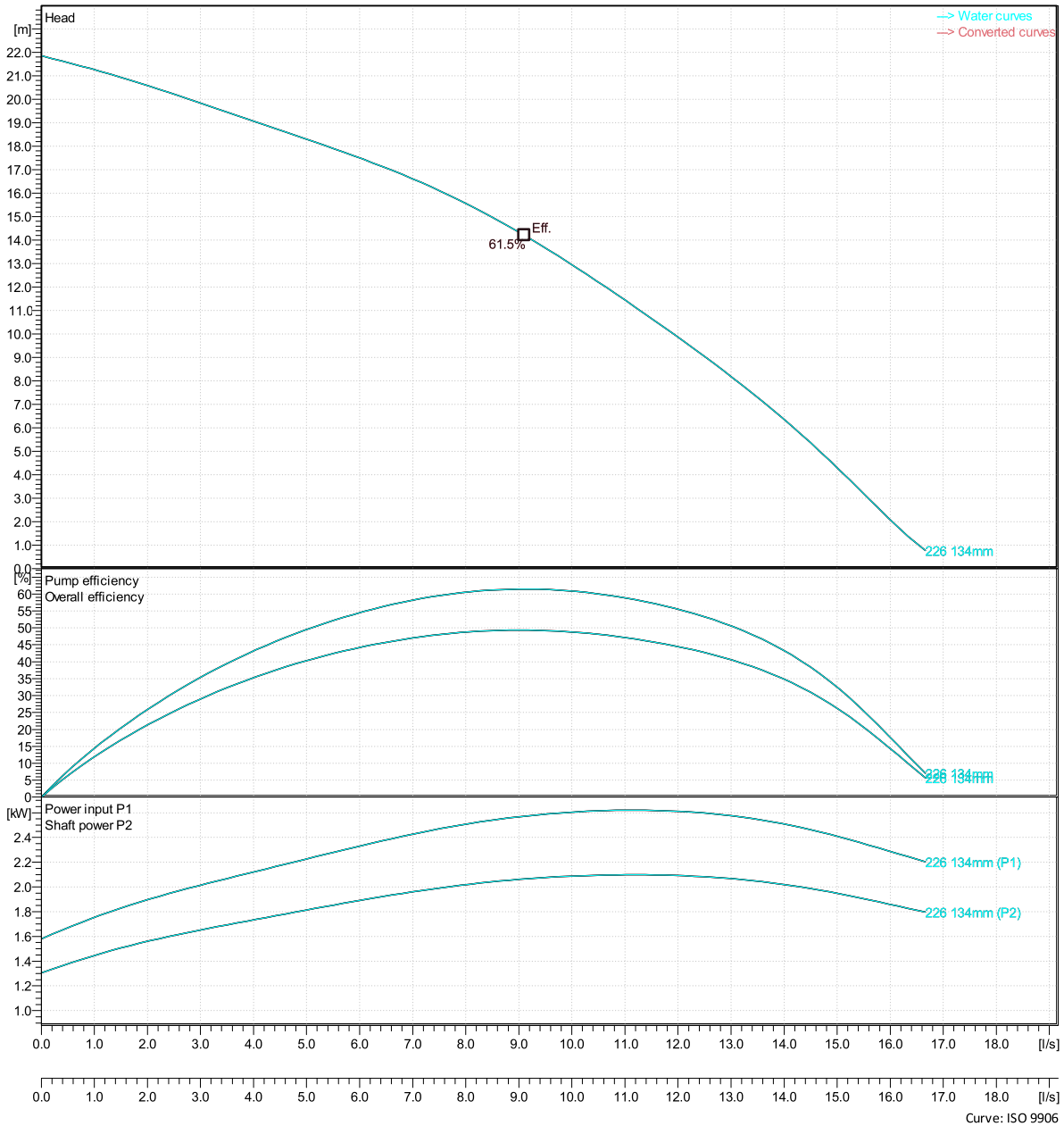


### Duty point

Flow

Head

Curves according to: Water, pure [100%], 4 °C, 999.9 kg/m<sup>3</sup>, 1.5692 mm<sup>2</sup>/s



Project  
Block

Created by Joshua Harvey  
 Created on 2/9/2021 Last update 2/9/2021

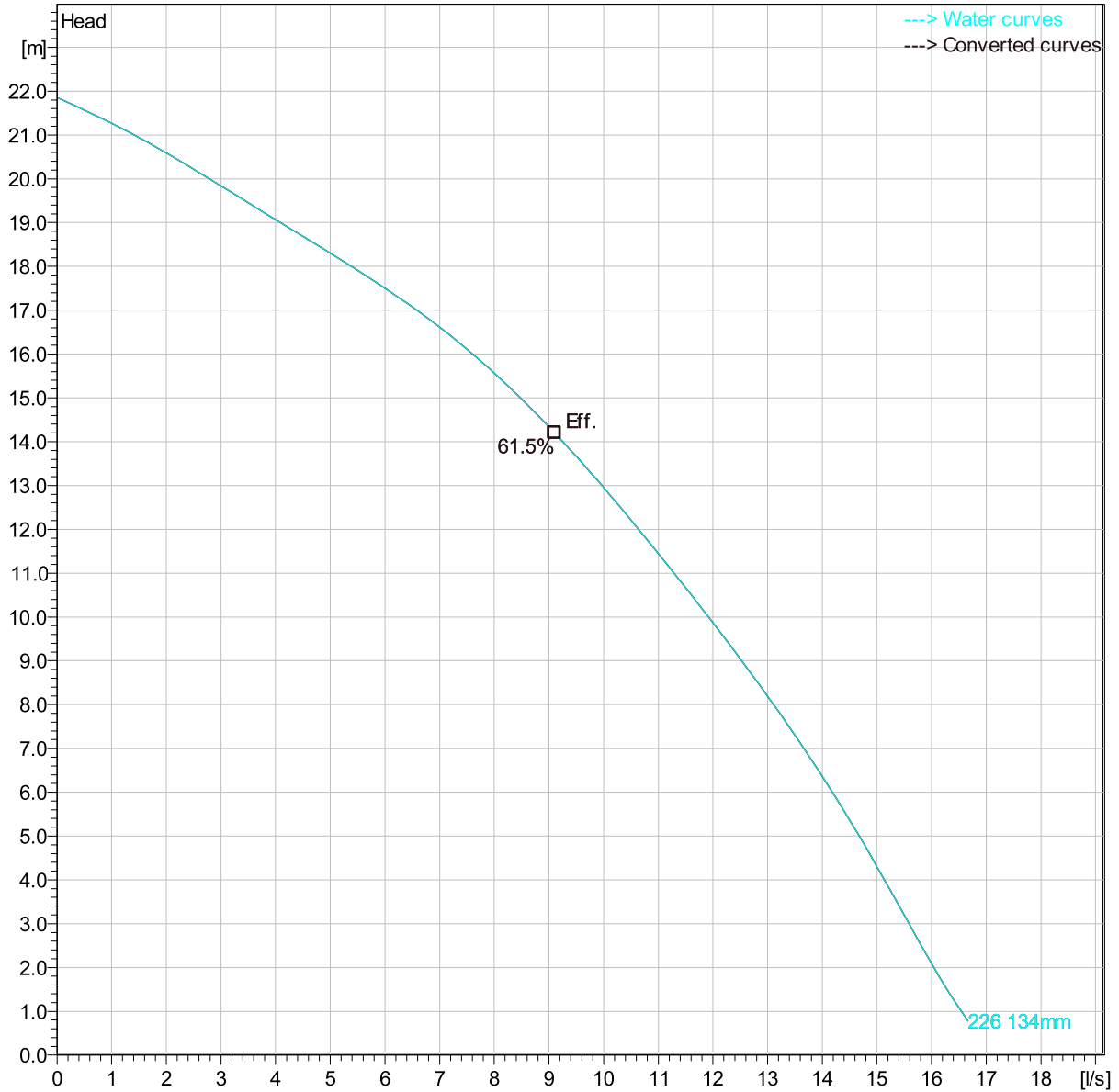
Curve: ISO 9906

# BS 2620 MT 3~ 226

## Duty Analysis



Curves according to: Water, pure [100%]; 4°C; 999.9kg/m³; 1.5692mm²/s



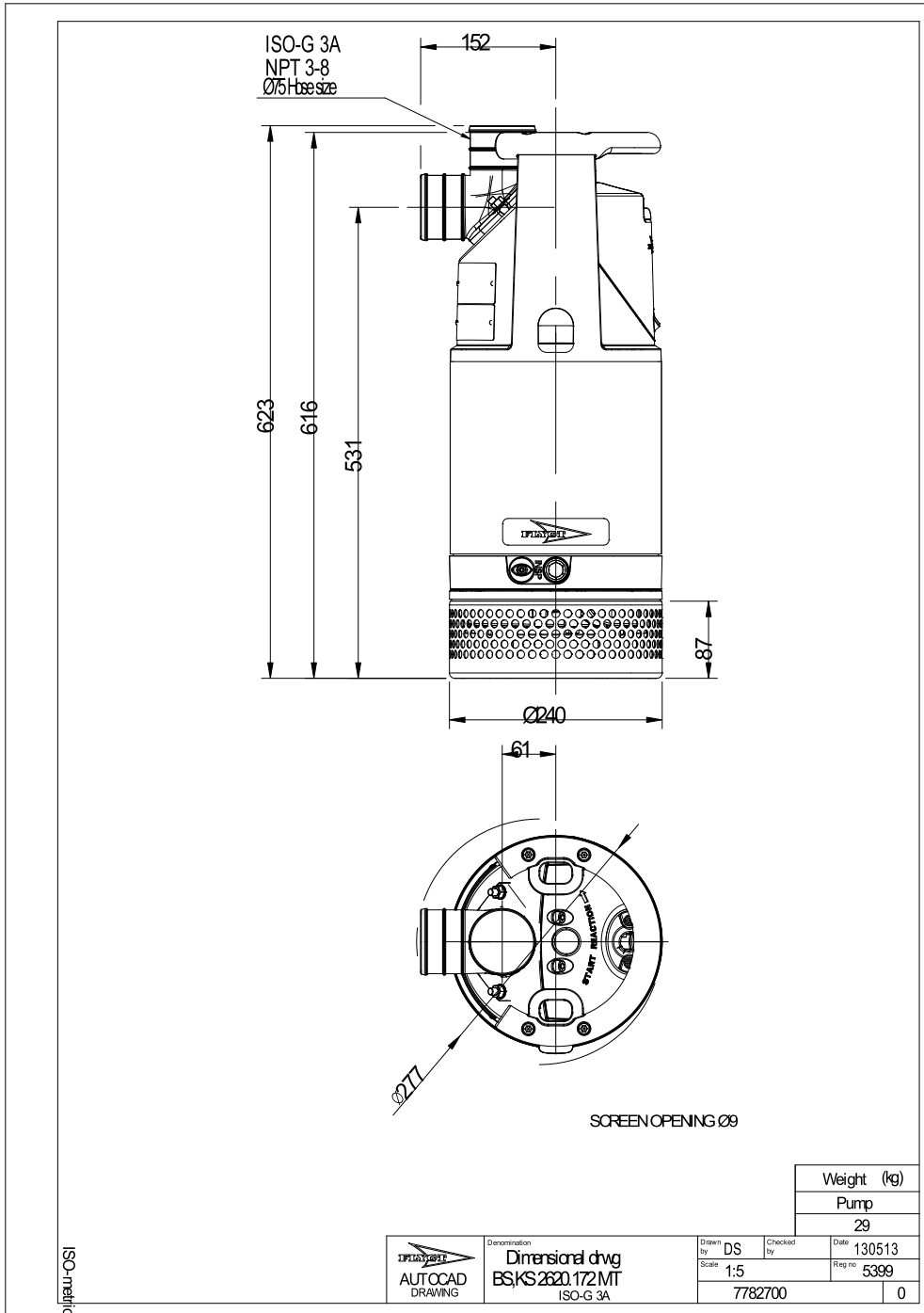
### Operating characteristics

Pumps / Systems	Flow	Head	Shaft power	Flow	Head	Shaft power	Hydr.eff.	Specific Energy	NPSHre

Project	Created by	Joshua Harvey
Block	Created on	2/9/2021
	Last update	2/9/2021

# BS 2620 MT 3~ 226

Dimensional drawing



Project	Created by	Joshua Harvey
Block	Created on	2/9/2021 Last update 2/9/2021