

Qty. Description

1 TP 100-65/4 A-F-A-BQQE-GX3



Note! Product picture may differ from actual product

Product No.: [99476455](#)

Single-stage, close-coupled, volute pump with in-line suction and discharge ports of identical diameter. The pump is of the top-pull-out design, i.e. the power head (motor, pump head and impeller) can be removed for maintenance or service while the pump housing remains in the pipework.

The pump is fitted with an unbalanced rubber bellows seal. The shaft seal is according to EN 12756. Pipework connection is via PN 16 DIN flanges (EN 1092-2 and ISO 7005-2).

Pipework connection is via PN 16 DIN flanges (EN 1092-2 and ISO 7005-2).

The pump is fitted with a fan-cooled asynchronous motor.

Liquid:

Pumped liquid: Water
 Liquid temperature range: -25 .. 120 °C
 Selected liquid temperature: 20 °C
 Density: 998.2 kg/m³

Technical:

Pump speed on which pump data are based: 1445 rpm
 Rated flow: 65.39 m³/h
 Rated head: 4.57 m
 Actual impeller diameter: 139 mm
 Primary shaft seal: BQQE
 Curve tolerance: ISO9906:2012 3B2

Materials:

Pump housing: Cast iron
 EN-JL1040
 ASTM A48-40 B
 Impeller: Cast iron
 EN-JL1030
 ASTM A48-30 B

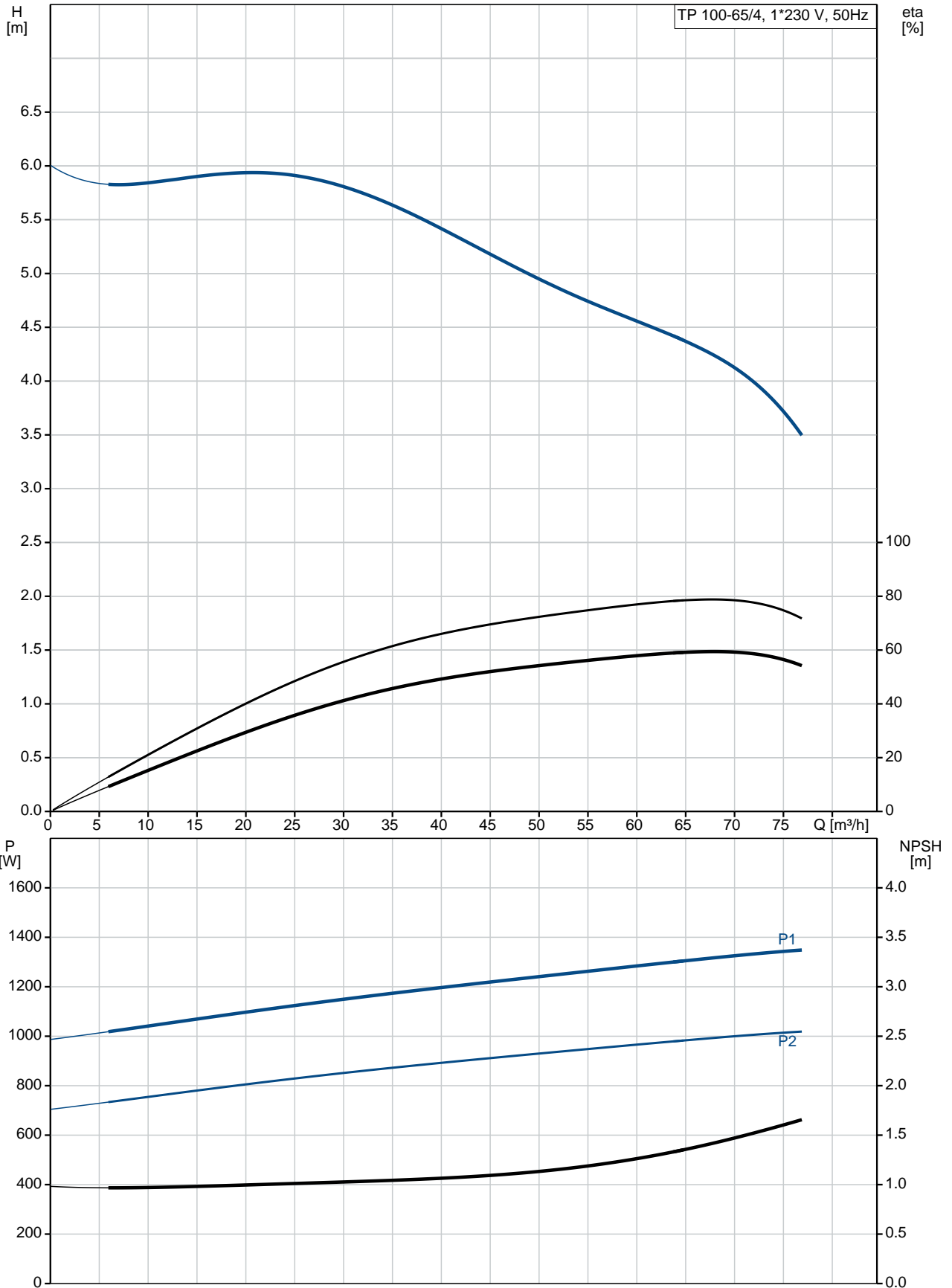
Installation:

Range of ambient temperature: -30 .. 40 °C
 Maximum operating pressure: 16 bar
 Flange standard: DIN
 Pipe connection: DN 100
 Pump inlet: DN 100
 Pump outlet: DN 100
 Pressure rating: PN 16
 Port-to-port length: 550 mm
 Flange size for motor: FF165

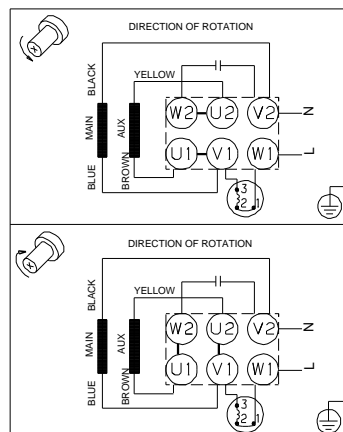
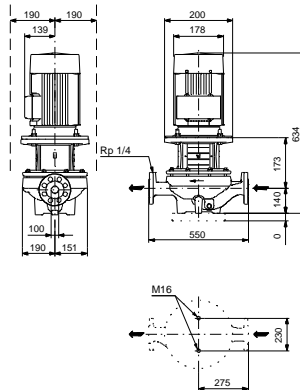
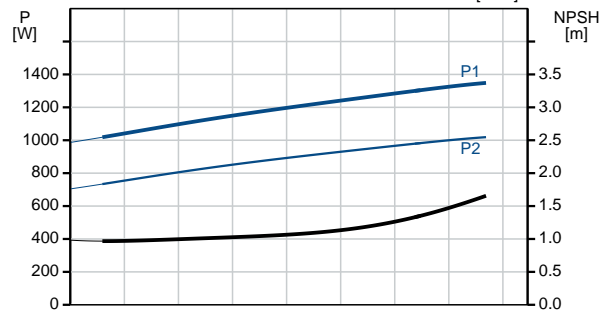
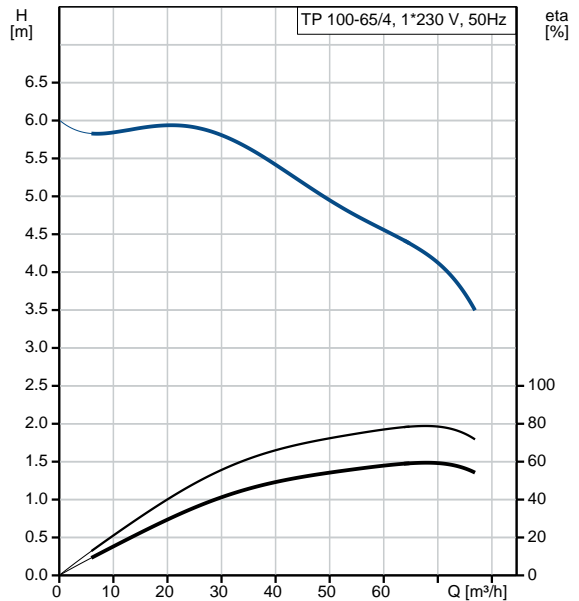
Electrical data:

Qty.	Description
	<p>Motor type: 90LB</p> <p>Rated power - P2: 1.1 kW</p> <p>Power (P2) required by pump: 1.1 kW</p> <p>Mains frequency: 50 Hz</p> <p>Rated voltage: 1 x 220-230 V</p> <p>Rated current: 7 A</p> <p>Starting current: 390 %</p> <p>Cos phi - power factor: 0.96</p> <p>Rated speed: 1420-1430 rpm</p> <p>Motor efficiency at full load: 75-76 %</p> <p>Number of poles: 4</p> <p>Enclosure class (IEC 34-5): 55 Dust/Jetting</p> <p>Insulation class (IEC 85): F</p> <p>Motor No: 87200343</p> <p>Others:</p> <p>Minimum efficiency index, MEI η_{min}: 0.7</p> <p>ErP status: EuP Standalone/Prod.</p> <p>Net weight: 90.7 kg</p> <p>Gross weight: 105 kg</p> <p>Shipping volume: 0.38 m³</p> <p>Country of origin: HU</p> <p>Custom tariff no.: 84137051</p>

99476455 TP 100-65/4 A-F-A-BQQE-GX3 50 Hz



Description	Value
General information:	
Product name:	TP 100-65/4 A-F-A-BQQE-GX3
Product No:	99476455
EAN number:	5713829740181 5713829740181
Price:	2.665,00 GBP
Technical:	
Pump speed on which pump data are based:	1445 rpm
Rated flow:	65.39 m ³ /h
Rated head:	4.57 m
Head max:	65 dm
Actual impeller diameter:	139 mm
Primary shaft seal:	BQQE
Curve tolerance:	ISO9906:2012 3B2
Pump version:	A
Model:	A
Materials:	
Pump housing:	Cast iron EN-JL1040 ASTM A48-40 B
Impeller:	Cast iron EN-JL1030 ASTM A48-30 B
Material code:	A
Installation:	
Range of ambient temperature:	-30 .. 40 °C
Maximum operating pressure:	16 bar
Flange standard:	DIN
Pipe connection:	DN 100
Pump inlet:	DN 100
Pump outlet:	DN 100
Pressure rating:	PN 16
Port-to-port length:	550 mm
Flange size for motor:	FF165
Connect code:	F
Liquid:	
Pumped liquid:	Water
Liquid temperature range:	-25 .. 120 °C
Selected liquid temperature:	20 °C
Density:	998.2 kg/m ³
Electrical data:	
Motor type:	90LB
Rated power - P2:	1.1 kW
Power (P2) required by pump:	1.1 kW
Mains frequency:	50 Hz
Rated voltage:	1 x 220-230 V
Rated current:	7 A
Starting current:	390 %
Cos phi - power factor:	0.96
Rated speed:	1420-1430 rpm
Motor efficiency at full load:	75-76 %
Number of poles:	4
Enclosure class (IEC 34-5):	55 Dust/Jetting
Insulation class (IEC 85):	F
Motor protec:	PTO
Motor No:	87200343
Others:	





Company name:

Created by:

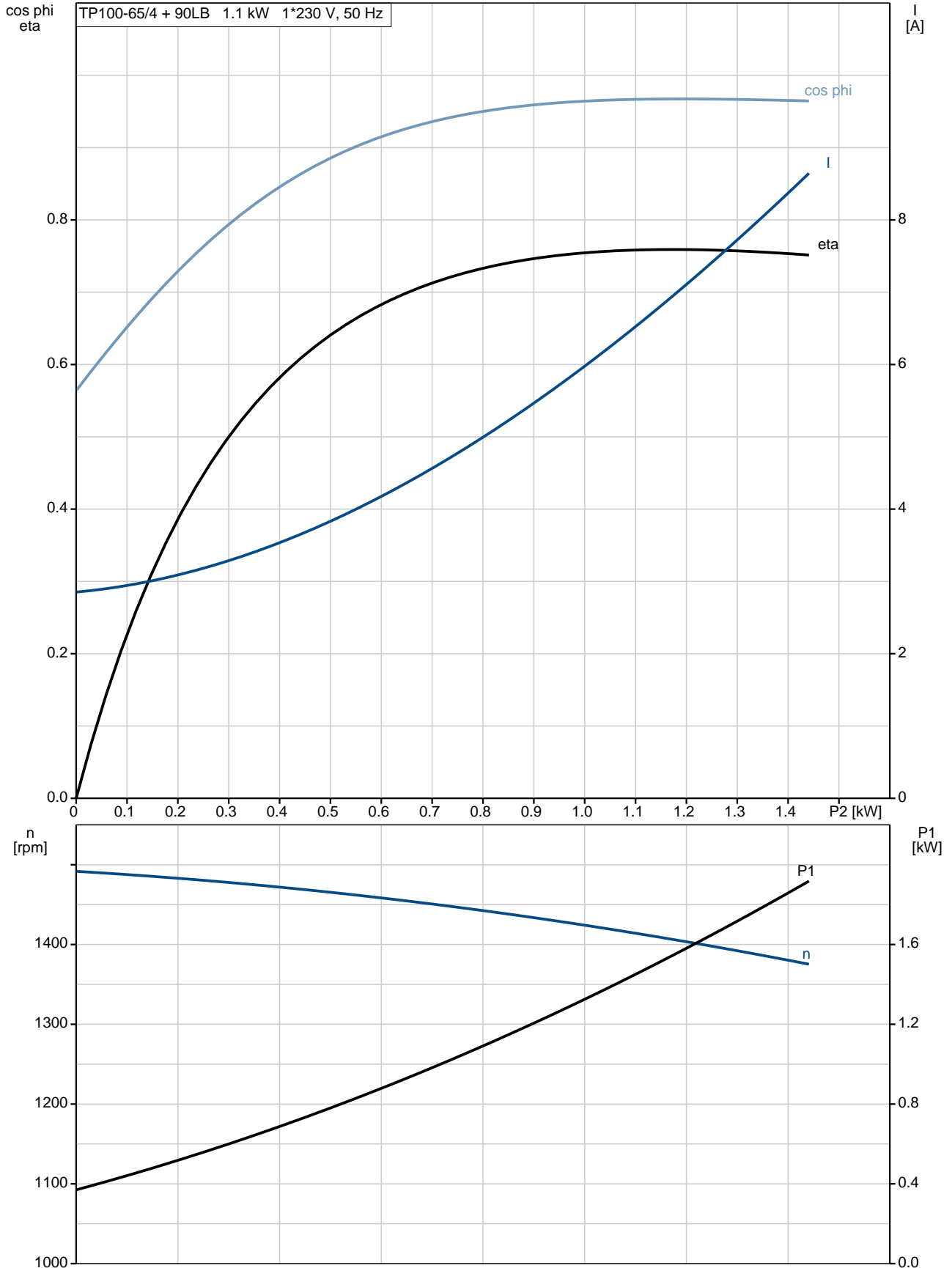
Phone:

Date:

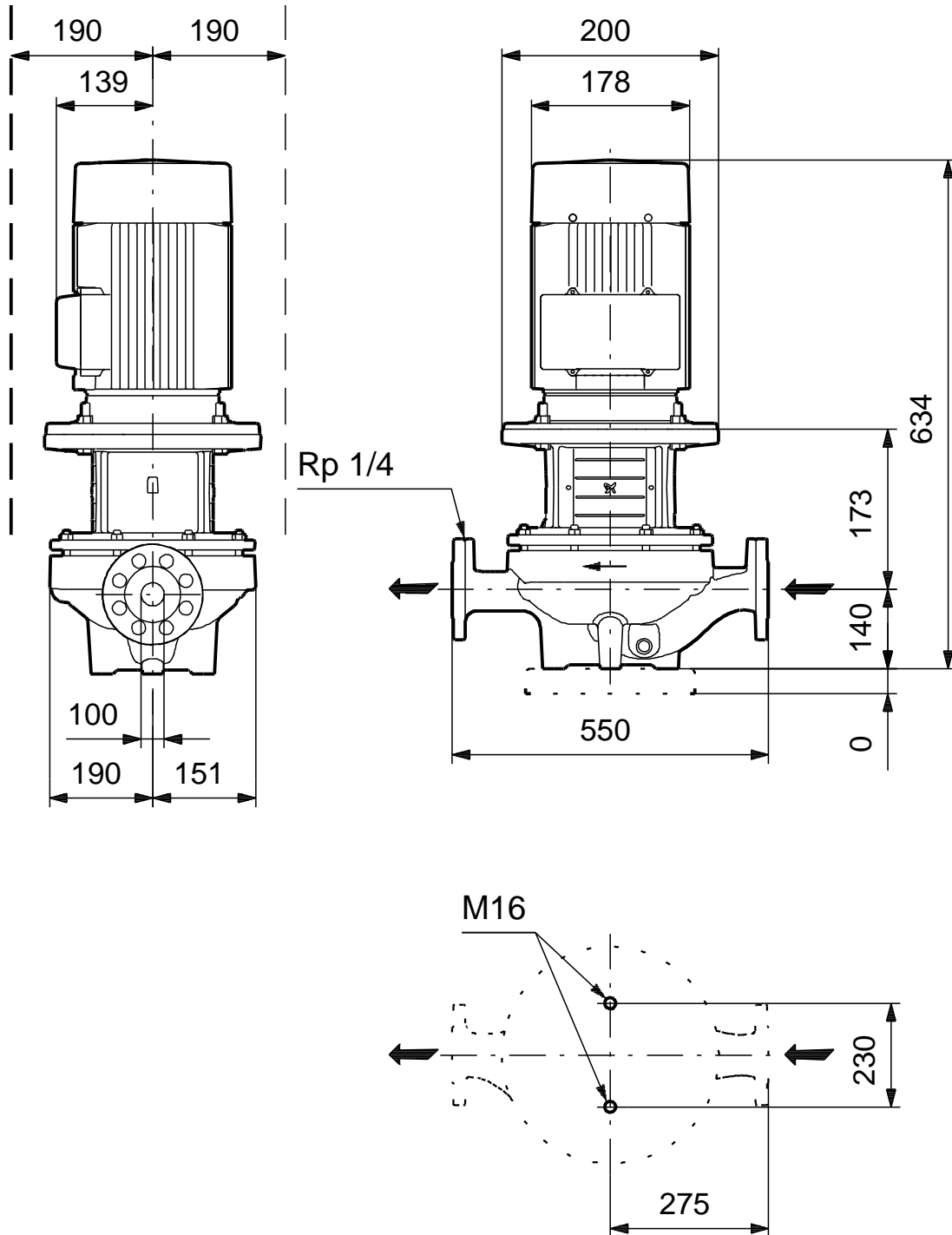
10/03/2020

Description	Value
Minimum efficiency index, MEI %:	0.7
ErP status:	EuP Standalone/Prod.
Net weight:	90.7 kg
Gross weight:	105 kg
Shipping volume:	0.38 m ³
Country of origin:	HU
Custom tariff no.:	84137051

99476455 TP 100-65/4 A-F-A-BQQE-GX3 50 Hz



99476455 TP 100-65/4 A-F-A-BQQE-GX3 50 Hz



Note! All units are in [mm] unless others are stated.
Disclaimer: This simplified dimensional drawing does not show all details.