


Qty.	Description
1	<p><b>MAGNA1 D 65-40 F</b></p> <p><b>NEW MAGNA1</b></p>  <p><b>Note! Product picture may differ from actual product</b></p> <p>Product No.: <a href="#">99221376</a></p> <p>The new MAGNA1 is the simple option for a job well done. It is the perfect choice when replacing older circulators and due to its compliance with the EuP 2015 regulations, substantial savings on electricity is a reality. The ideal choice for basic performance needs in applications where basic system control and monitoring is desired.</p> <ul style="list-style-type: none"> <li>• Monitoring via the fault relay, ensuring peace of mind</li> <li>• Digital start/stop input available for remote pump control</li> <li>• Continuous operation and reduced downtime with the wireless twin pump function (available on twin-head pumps)</li> <li>• High energy efficiency resulting in substantial savings on electricity</li> <li>• Easy setup and operation via the simple user interface</li> <li>• No maintenance due to the canned-rotor type design.</li> </ul> <p>MAGNA1 is the simple and efficient choice for most applications including</p> <ul style="list-style-type: none"> <li>• Heating <ul style="list-style-type: none"> <li>- Main pump</li> <li>- Mixing loops</li> <li>- Heating surfaces</li> </ul> </li> <li>• Cooling <ul style="list-style-type: none"> <li>- Air conditioning surfaces</li> <li>- Ground source heat pump systems</li> <li>- Smaller chiller applications</li> </ul> </li> </ul> <p><b>Liquid:</b></p> <p>Pumped liquid: Water</p> <p>Liquid temperature range: -10 .. 110 °C</p> <p>Liquid temperature during operation: 60 °C</p> <p>Density: 983.2 kg/m<sup>3</sup></p> <p><b>Technical:</b></p> <p>TF class: 110</p> <p>Approvals on nameplate: CE,VDE,EAC,CN ROHS,WEEE</p> <p><b>Materials:</b></p> <p>Pump housing: Cast iron EN-GJL-250 ASTM A48-250B</p> <p>Impeller: PES 30%GF</p> <p><b>Installation:</b></p> <p>Range of ambient temperature: 0 .. 40 °C</p> <p>Maximum operating pressure: 10 bar</p> <p>Flange standard: DIN</p> <p>Pipe connection: DN 65</p> <p>Pressure rating: PN6/10</p> <p>Port-to-port length: 340 mm</p>

Qty.	Description
------	-------------

**Electrical data:**

Power input - P1: 23.87 .. 189 W

Mains frequency: 50 Hz

Rated voltage: 1 x 230 V

Maximum current consumption: 0.26 .. 0.89 A

Enclosure class (IEC 34-5): X4D

Insulation class (IEC 85): F

**Others:**

Energy (EEI): 0.23

Net weight: 38.2 kg

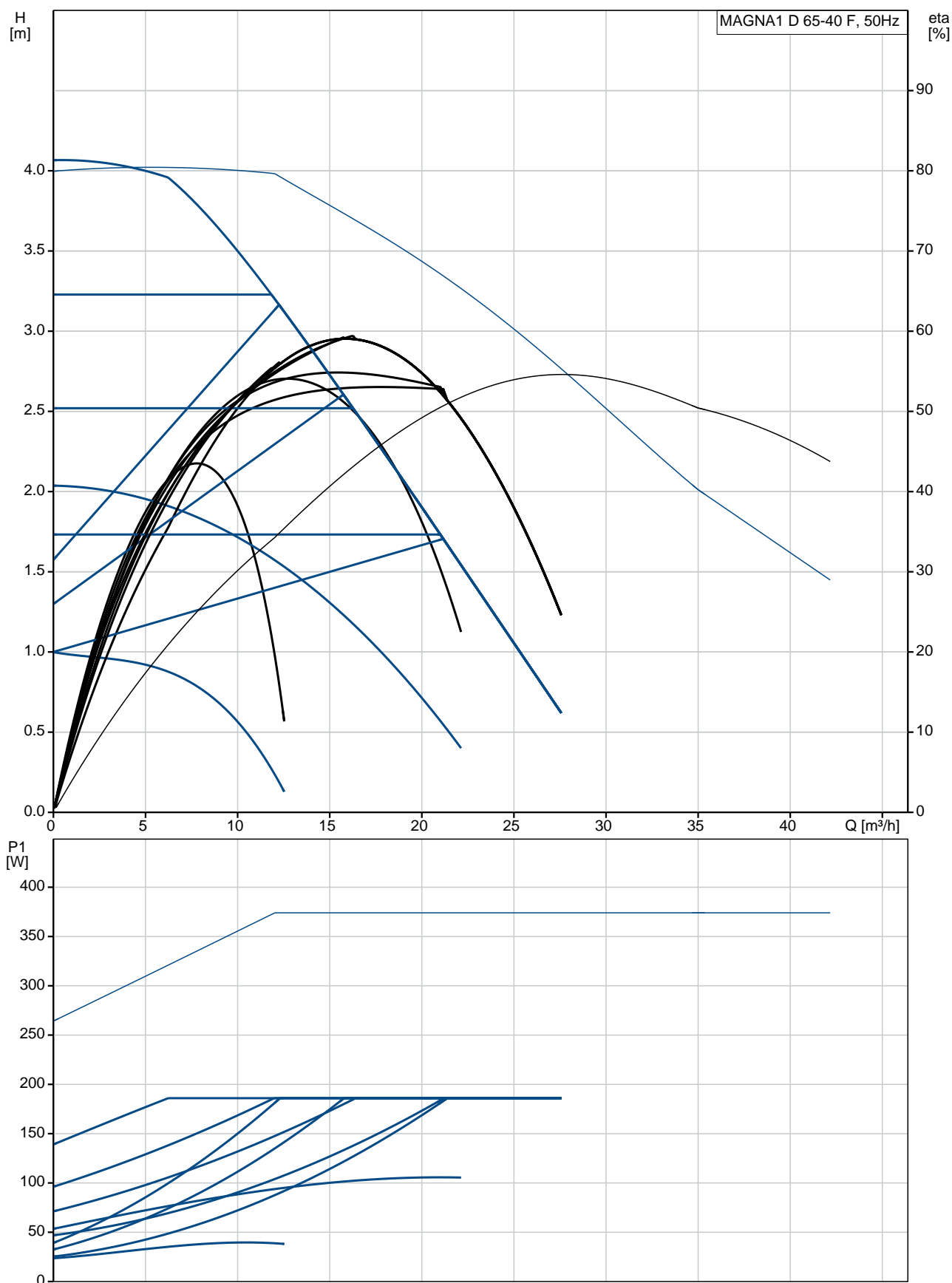
Gross weight: 45.7 kg

Shipping volume: 0.132 m<sup>3</sup>

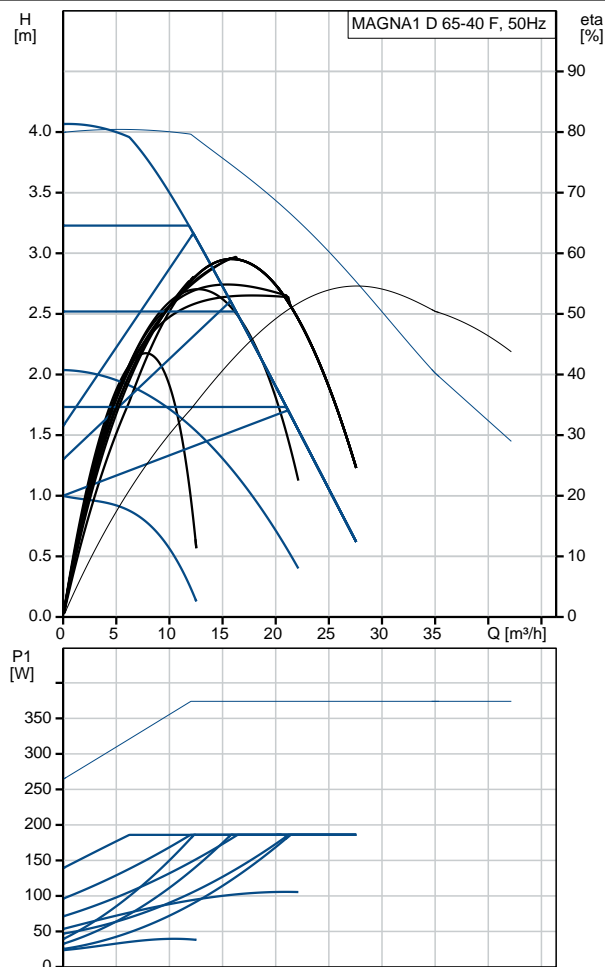
Country of origin: DE

Custom tariff no.: 84137030

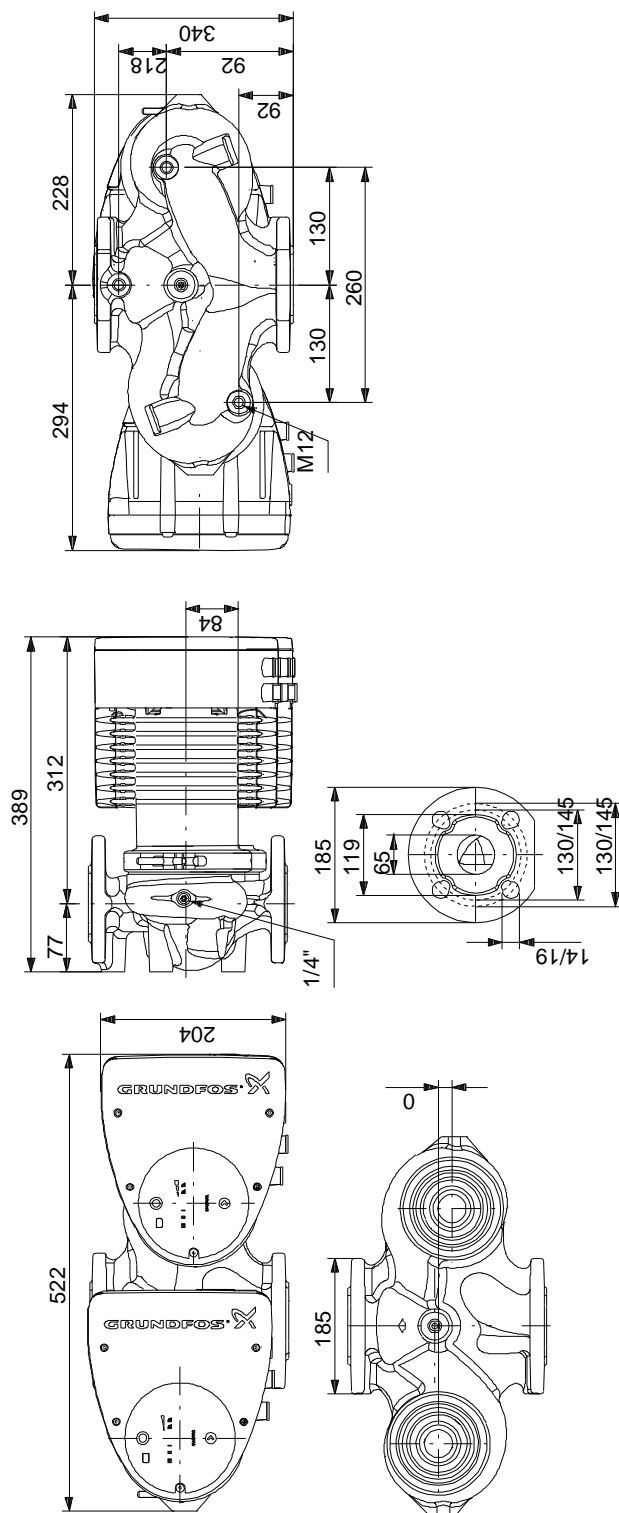
## 99221376 MAGNA1 D 65-40 F 50 Hz



Description	Value
<b>General information:</b>	
Product name:	MAGNA1 D 65-40 F
Product No:	99221376
EAN number:	5712608943485
Price:	2.853,00 GBP
<b>Technical:</b>	
Head max:	40 dm
TF class:	110
Approvals on nameplate:	CE,VDE,EAC,CN ROHS,WEEE
Model:	C
<b>Materials:</b>	
Pump housing:	Cast iron EN-GJL-250 ASTM A48-250B
Impeller:	PES 30%GF
<b>Installation:</b>	
Range of ambient temperature:	0 .. 40 °C
Maximum operating pressure:	10 bar
Flange standard:	DIN
Pipe connection:	DN 65
Pressure rating:	PN6/10
Port-to-port length:	340 mm
<b>Liquid:</b>	
Pumped liquid:	Water
Liquid temperature range:	-10 .. 110 °C
Liquid temperature during operation:	60 °C
Density:	983.2 kg/m <sup>3</sup>
<b>Electrical data:</b>	
Power input - P1:	23.87 .. 189 W
Mains frequency:	50 Hz
Rated voltage:	1 x 230 V
Maximum current consumption:	0.26 .. 0.89 A
Enclosure class (IEC 34-5):	X4D
Insulation class (IEC 85):	F
<b>Others:</b>	
Energy (EEL):	0.23
Net weight:	38.2 kg
Gross weight:	45.7 kg
Shipping volume:	0.132 m <sup>3</sup>
Country of origin:	DE
Custom tariff no.:	84137030



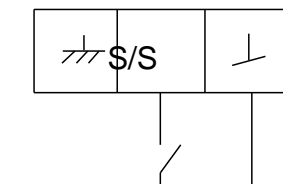
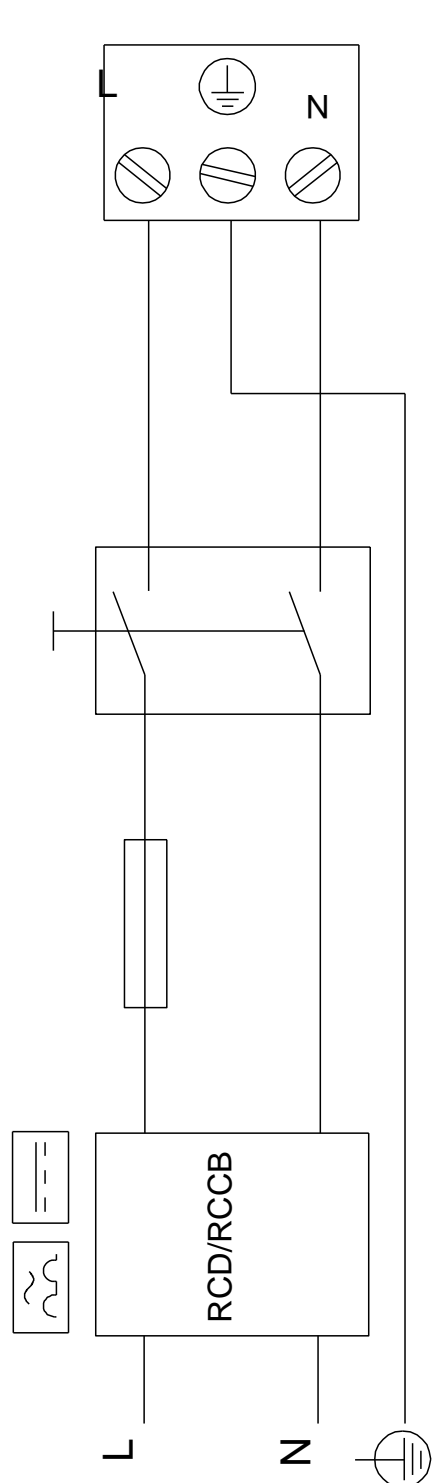
## 99221376 MAGNA1 D 65-40 F 50 Hz



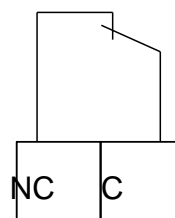
Note! All units are in [mm] unless others are stated.  
Disclaimer: This simplified dimensional drawing does not show all details.

## 99221376 MAGNA1 D 65-40 F 50 Hz

Example of mains-connected motor  
with mains switch, backup fuse and additional protection



Digital inputs



Relay outputs

Note! All units are in [mm] unless others are stated.