

**Qty. Description**

1 CRNE 45-2-1 N-F-A-E-HQQE



Note! Product picture may differ from actual product

Product No.: [99072052](#)

Vertical, multistage centrifugal pump with inlet and outlet ports on same the level (inline). Pump materials in contact with the liquid are in high-grade stainless steel. A cartridge shaft seal ensures high reliability, safe handling, and easy access and service. Power transmission is via a rigid split coupling. Pipe connection is via DIN flanges.

The pump is fitted with a 3-phase, fan-cooled, permanent-magnet, synchronous motor.

The motor efficiency is classified as IE5 in accordance with IEC 60034-30-2.

The motor includes a frequency converter and PI controller in the motor terminal box. This enables continuously variable control of the motor speed, which again enables adaptation of the performance to a given requirement.

An operating panel on the motor terminal box enables setting of required setpoint as well as setting of pump to "Min." or "Max." operation or to "Stop". The Grundfos Eye indicator on the operating panel provides visual indication of pump status:

- "Power on": Motor is running (rotating green indicator lights) or not running (permanently green indicator lights)
- "Warning": Motor is still running (rotating yellow indicator lights) or has stopped (permanently yellow indicator lights)
- "Alarm": Motor has stopped (flashing red indicator lights).

Communication with the pump is possible by means of Grundfos GO Remote (accessory). The remote control enables further settings as well as reading out of a number of parameters such as "Actual value", "Speed", "Power input" and total "Power consumption".

### Further product details

The pump is equipped with a pressure sensor registering pump outlet pressure and enabling controlled pump operation based on constant pressure.

An operating panel on the motor terminal box enables setting of required setpoint as well as setting of pump to "Min." or "Max." operation or to "Stop". The Grundfos Eye indicator on the operating panel provides visual indication of pump status:

- "Power on": Motor is running (rotating green indicator lights) or not running (permanently green indicator lights)
- "Warning": Motor is still running (rotating yellow indicator lights) or has stopped (permanently yellow indicator lights)
- "Alarm": Motor has stopped (flashing red indicator lights).

Communication with the pump is possible by means of Grundfos GO Remote (accessory). The remote control enables further settings as well as reading out of a number of parameters such as "Actual value", "Speed", "Power input" and total "Power consumption".

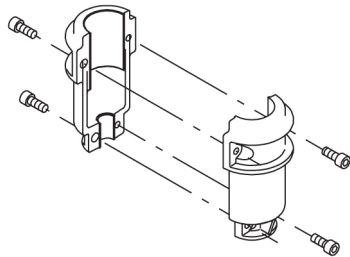
**Qty. Description**

Steel, cast iron and aluminium components have an epoxy-based coating made in a cathodic electro-deposition (CED) process. CED is a high-quality dip-painting process where an electrical field around the products ensures deposition of paint particles as a thin, well-controlled layer on the surface. An integral part of the process is a pretreatment. The entire process consists of these elements:

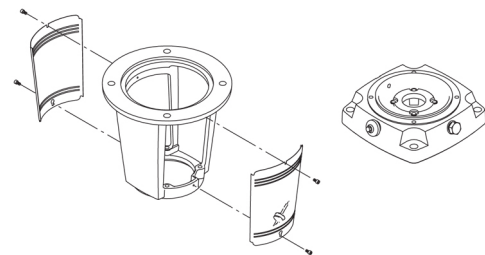
- 1) Alkaline-based cleaning.
  - 2) Zinc phosphating.
  - 3) Cathodic electro-deposition.
  - 4) Curing to a dry film thickness 18-22 my m.
- The colour code for the finished product is NCS 9000/RAL 9005.

**Pump**

A long split coupling connects the pump and motor shaft. It is enclosed in the motor stool by means of two coupling guards. The long coupling makes it possible to replace the shaft seal without removing the motor from the pump.



The motor stool connects the pump head and motor. The pump head has a combined 1/2" priming plug and vent screw.



The pump is fitted with a balanced O-ring seal unit with a rigid torque-transmission system. This seal type is assembled in a cartridge unit which makes replacement safe and easy. Due to the balancing, this seal type is suitable for high-pressure applications. The cartridge construction also protects the pump shaft from possible wear from a dynamic O-ring between pump shaft and shaft seal.

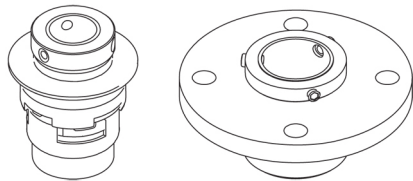
**Primary seal:**

- Rotating seal ring material: silicon carbide (SiC)
- Stationary seat material: silicon carbide (SiC)

This material pairing is used where higher corrosion resistance is required. The high hardness of this material pairing offers good resistance against abrasive particles.

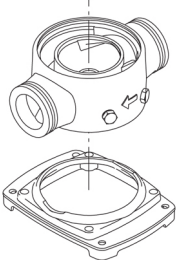
**Secondary seal material: EPDM (ethylene-propylene rubber)**

EPDM has excellent resistance to hot water. EPDM is not suitable for mineral oils.



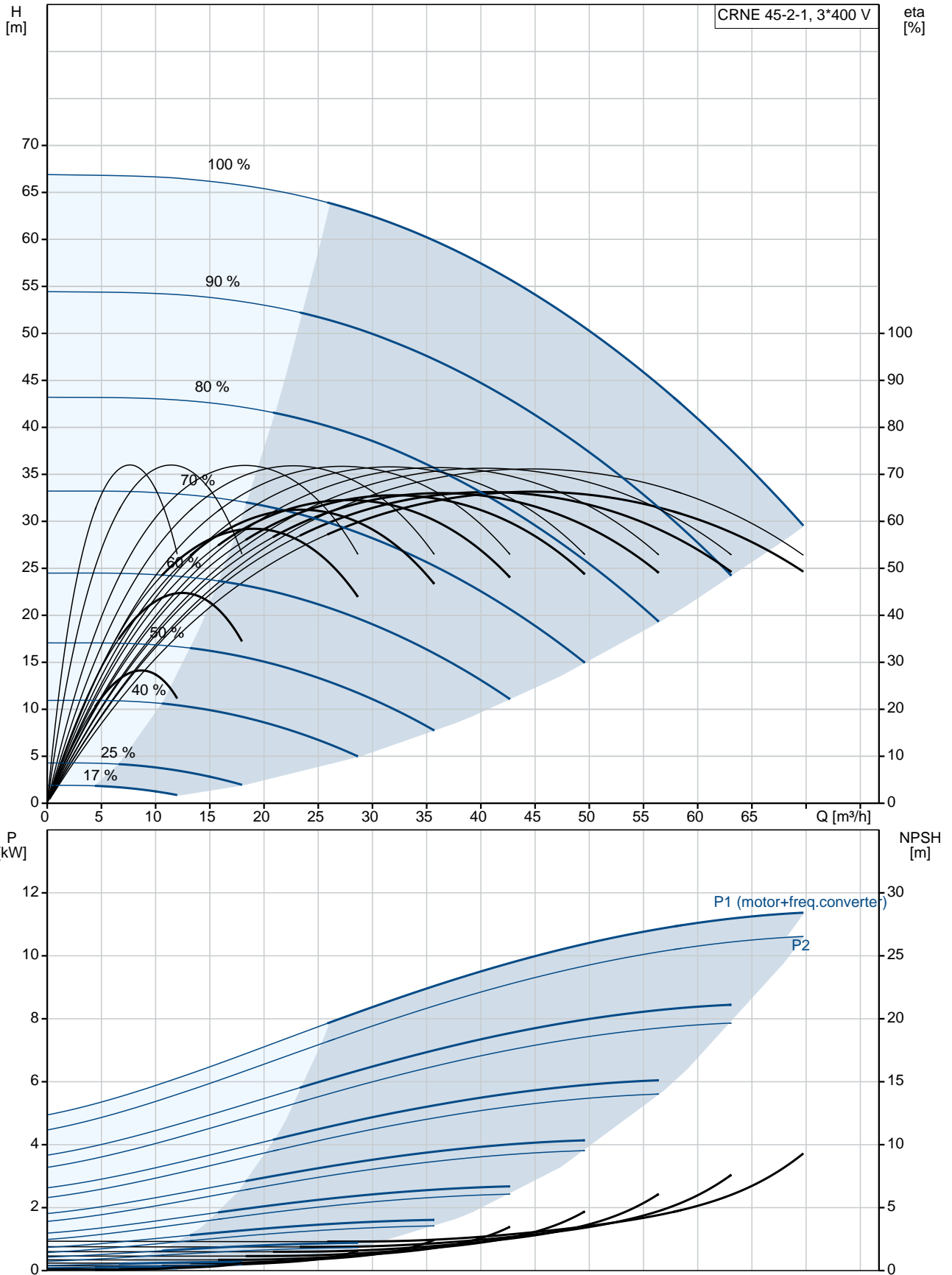
The shaft seal is retained in the pump head by a cover and screws. It can be replaced without removing the motor.

The pump has a special air-cooled shaft-seal chamber generating the same insulation effect as that of a vacuum flask. No external cooling is necessary; the ambient temperature is sufficient. An automatic vent vents the pump seal chamber.

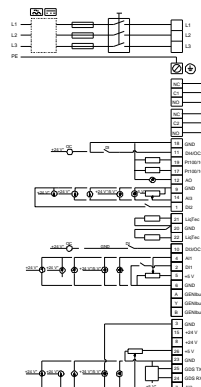
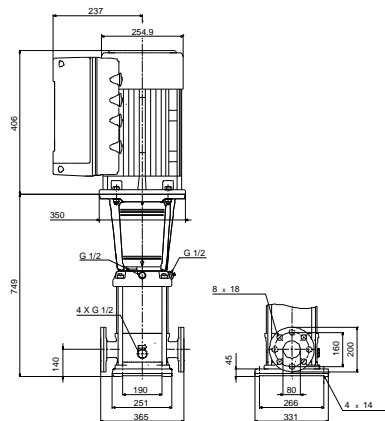
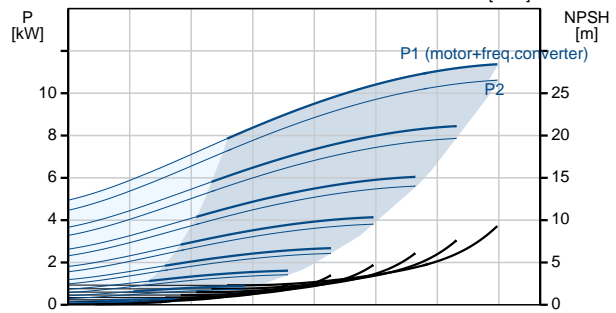
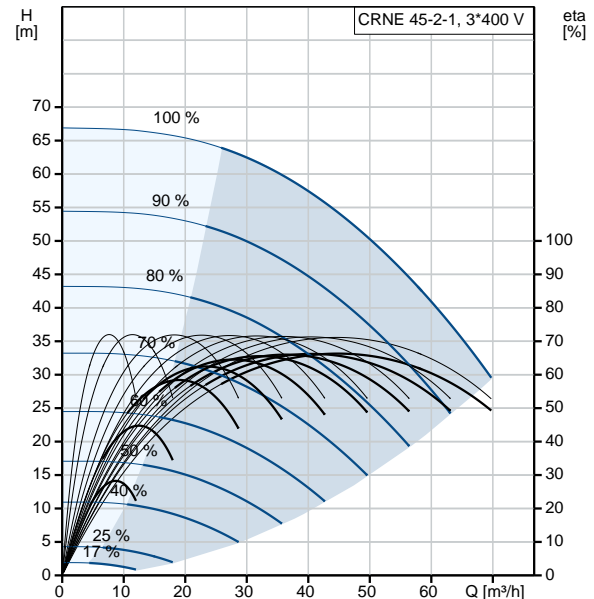
Qty.	Description																																								
	<p>The chambers and impellers are made of stainless-steel sheet. The chambers are provided with a PTFE neck ring offering improved sealing and high efficiency. The impellers have smooth surfaces, and the shape of the blades ensure a high efficiency.</p> <p>The pump has a stainless-steel base mounted on a separate base plate. The base and base plate are kept in position by the tension of the staybolts which hold the pump together. Both the inlet and the outlet side of the base have two pressure gauge tapings. The pump is secured to the foundation by four bolts through the base plate. The flanges are fastened to the base by means of locking rings.</p>  <p><b>Motor</b></p> <p>The motor is a totally enclosed, fan-cooled motor with principal dimensions to IEC and DIN standards. Electrical tolerances comply with IEC 60034.</p> <p>The motor efficiency is classified as IE5 in accordance with IEC 60034-30-2.</p> <p>The motor requires no external motor protection. The motor control unit incorporates protection against slow- and quick-rising temperatures, e.g. constant overload and stalled conditions.</p> <p><b>Technical data</b></p> <p><b>Controls:</b></p> <table data-bbox="204 1198 646 1254"> <tr> <td>Frequency converter:</td> <td>Built-in</td> </tr> <tr> <td>Pressure sensor:</td> <td>Yes</td> </tr> </table> <p><b>Liquid:</b></p> <table data-bbox="204 1310 774 1433"> <tr> <td>Pumped liquid:</td> <td>Water</td> </tr> <tr> <td>Liquid temperature range:</td> <td>-40 .. 120 °C</td> </tr> <tr> <td>Selected liquid temperature:</td> <td>20 °C</td> </tr> <tr> <td>Density at selected liquid temperature:</td> <td>998.2 kg/m<sup>3</sup></td> </tr> </table> <p><b>Technical:</b></p> <table data-bbox="204 1489 821 1736"> <tr> <td>Pump speed on which pump data are based:</td> <td>3529 rpm</td> </tr> <tr> <td>Rated flow:</td> <td>54 m<sup>3</sup>/h</td> </tr> <tr> <td>Rated head:</td> <td>51.7 m</td> </tr> <tr> <td>Pump orientation:</td> <td>Vertical</td> </tr> <tr> <td>Shaft seal arrangement:</td> <td>Single</td> </tr> <tr> <td>Code for shaft seal:</td> <td>HQQE</td> </tr> <tr> <td>Approvals on nameplate:</td> <td>CE, EAC, ACS</td> </tr> <tr> <td>Curve tolerance:</td> <td>ISO9906:2012 3B</td> </tr> </table> <p><b>Materials:</b></p> <table data-bbox="204 1792 726 2027"> <tr> <td rowspan="3">Base:</td> <td>Stainless steel</td> </tr> <tr> <td>EN 1.4408</td> </tr> <tr> <td>AISI 316</td> </tr> <tr> <td rowspan="3">Impeller:</td> <td>Stainless steel</td> </tr> <tr> <td>EN 1.4401</td> </tr> <tr> <td>AISI 316</td> </tr> <tr> <td>Bearing:</td> <td>SIC</td> </tr> <tr> <td>Support bearing:</td> <td>Graflon</td> </tr> </table> <p><b>Installation:</b></p>	Frequency converter:	Built-in	Pressure sensor:	Yes	Pumped liquid:	Water	Liquid temperature range:	-40 .. 120 °C	Selected liquid temperature:	20 °C	Density at selected liquid temperature:	998.2 kg/m <sup>3</sup>	Pump speed on which pump data are based:	3529 rpm	Rated flow:	54 m <sup>3</sup> /h	Rated head:	51.7 m	Pump orientation:	Vertical	Shaft seal arrangement:	Single	Code for shaft seal:	HQQE	Approvals on nameplate:	CE, EAC, ACS	Curve tolerance:	ISO9906:2012 3B	Base:	Stainless steel	EN 1.4408	AISI 316	Impeller:	Stainless steel	EN 1.4401	AISI 316	Bearing:	SIC	Support bearing:	Graflon
Frequency converter:	Built-in																																								
Pressure sensor:	Yes																																								
Pumped liquid:	Water																																								
Liquid temperature range:	-40 .. 120 °C																																								
Selected liquid temperature:	20 °C																																								
Density at selected liquid temperature:	998.2 kg/m <sup>3</sup>																																								
Pump speed on which pump data are based:	3529 rpm																																								
Rated flow:	54 m <sup>3</sup> /h																																								
Rated head:	51.7 m																																								
Pump orientation:	Vertical																																								
Shaft seal arrangement:	Single																																								
Code for shaft seal:	HQQE																																								
Approvals on nameplate:	CE, EAC, ACS																																								
Curve tolerance:	ISO9906:2012 3B																																								
Base:	Stainless steel																																								
	EN 1.4408																																								
	AISI 316																																								
Impeller:	Stainless steel																																								
	EN 1.4401																																								
	AISI 316																																								
Bearing:	SIC																																								
Support bearing:	Graflon																																								



## 99072052 CRNE 45-2-1 N-F-A-E-HQQE 50 Hz



Description	Value
<b>General information:</b>	
Product name:	CRNE 45-2-1 N-F-A-E-HQQE
Product No:	99072052
EAN number:	5712606203642
Price:	5712606203642
	8.737,00 GBP
<b>Technical:</b>	
Pump speed on which pump data are based:	3529 rpm
Rated flow:	54 m <sup>3</sup> /h
Rated head:	51.7 m
Head max:	67.8 m
Stages:	2
Impellers:	2
Number of reduced-diameter impellers:	1
Low NPSH:	No
Pump orientation:	Vertical
Shaft seal arrangement:	Single
Code for shaft seal:	HQQE
Approvals on nameplate:	CE, EAC, ACS
Curve tolerance:	ISO9906:2012 3B
Pump version:	N
Model:	B
<b>Materials:</b>	
Base:	Stainless steel EN 1.4408 AISI 316
Impeller:	Stainless steel EN 1.4401 AISI 316
Material code:	A
Code for rubber:	E
Bearing:	SIC
Support bearing:	Graflon
<b>Installation:</b>	
Maximum ambient temperature:	50 °C
Maximum operating pressure:	16 bar
Max pressure at stated temp:	16 bar / 120 °C 16 bar / -40 °C
Type of connection:	DIN
Size of inlet connection:	DN 80
Size of outlet connection:	DN 80
Pressure rating for pipe connection:	PN 40
Flange size for motor:	FF300
Connect code:	F
<b>Liquid:</b>	
Pumped liquid:	Water
Liquid temperature range:	-40 .. 120 °C
Selected liquid temperature:	20 °C
Density at selected liquid temperature:	998.2 kg/m <sup>3</sup>
<b>Electrical data:</b>	
Motor standard:	IEC
Motor type:	160MH
IE Efficiency class:	IE5
Rated power - P2:	11 kW
Power (P2) required by pump:	11 kW
Mains frequency:	50 Hz
Rated voltage:	3 x 380-500 V





Company name:

Created by:

Phone:

Date:

26/11/2019

Description	Value
Rated current:	20.3-16.0 A
Cos phi - power factor:	0.93-0.90
Rated speed:	360-4000 rpm
Efficiency:	93.1%
Motor efficiency at full load:	93.1 %
Enclosure class (IEC 34-5):	IP55
Insulation class (IEC 85):	F
Motor protec:	YES
Motor No:	98971053
<b>Controls:</b>	
Control panel:	Standard
Function Module:	300
Frequency converter:	Built-in
Pressure sensor:	Yes
<b>Others:</b>	
Minimum efficiency index, MEI :	0.70
Net weight:	136 kg
Gross weight:	169 kg
Shipping volume:	0.495 m <sup>3</sup>
Danish VVS No.:	386021171
Country of origin:	GB
Custom tariff no.:	84137075

## 99072052 CRNE 45-2-1 N-F-A-E-HQQE 50 Hz

