
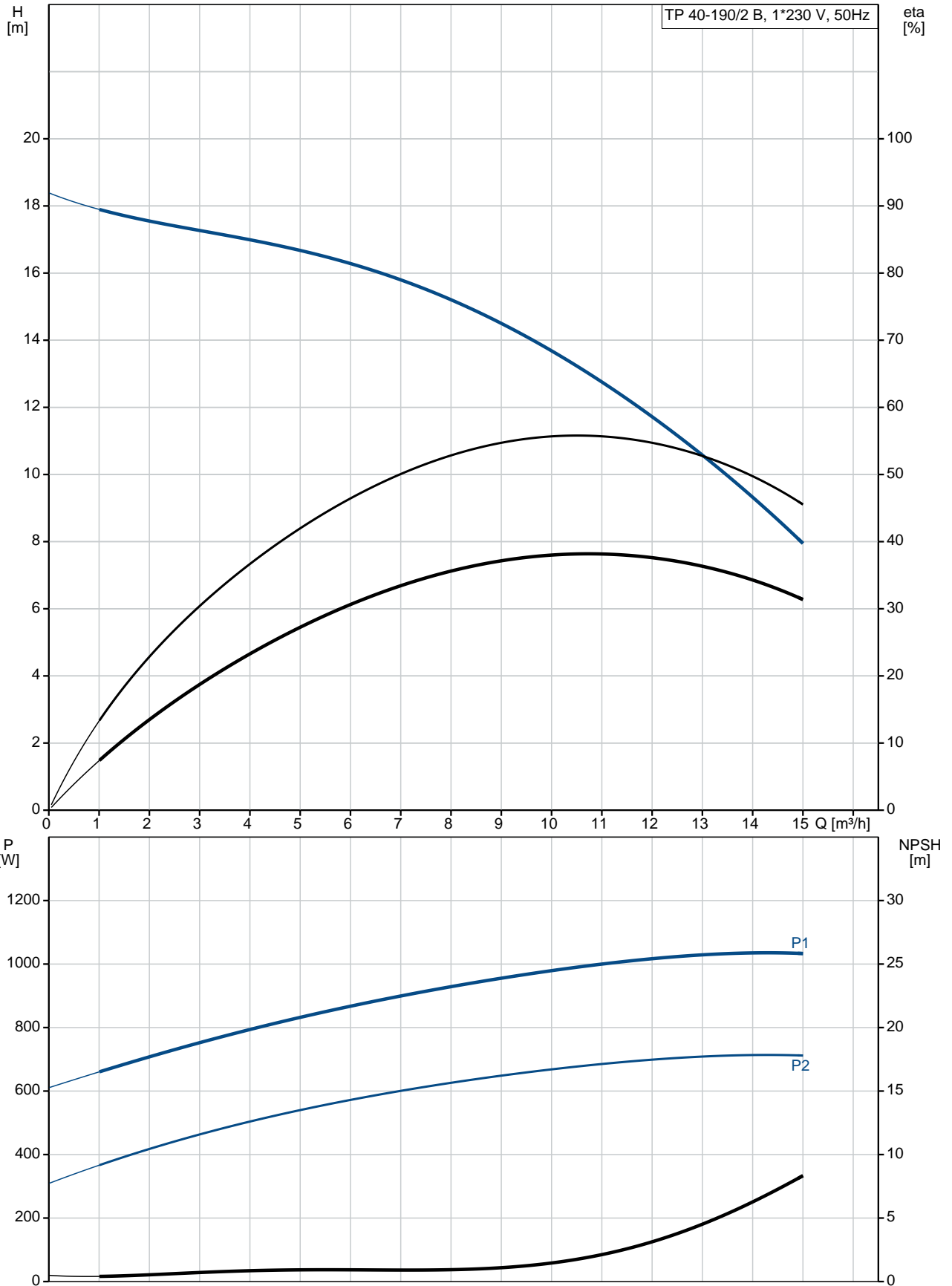


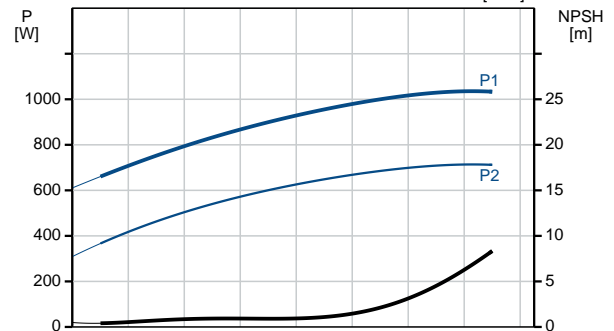
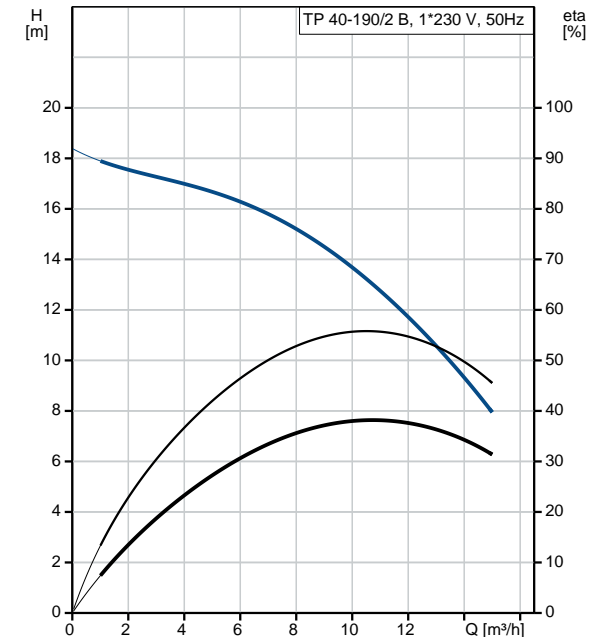
Position	Qty.	Description
	1	<p><b>TP 40-190/2 B A-F-Z-BQQE</b></p>  <p><b>Note! Product picture may differ from actual product</b></p> <p>Product No.: <a href="#">98958126</a></p> <p>Single-stage, close-coupled, volute pump with in-line suction and discharge ports of identical diameter. The pump is of the top-pull-out design, i.e. the power head (motor, pump head and impeller) can be removed for maintenance or service while the pump housing remains in the pipework.</p> <p>The pump is fitted with an unbalanced rubber bellows seal. The shaft seal is according to EN 12756. Pipework connection is via PN 16 DIN flanges (EN 1092-2 and ISO 7005-2).</p> <p>The pump is fitted with a fan-cooled asynchronous motor.</p> <p><b>Liquid:</b></p> <p>Pumped liquid: Water            Liquid temperature range: -25 .. 120 °C            Liquid temperature during operation: 20 °C            Density: 998.2 kg/m<sup>3</sup></p> <p><b>Technical:</b></p> <p>Speed for pump data: 2855 rpm            Rated flow: 10.5 m<sup>3</sup>/h            Rated head: 13.2 m            Primary shaft seal: BQQE            Curve tolerance: ISO9906:2012 3B</p> <p><b>Materials:</b></p> <p>Pump housing: Bronze            DIN W.-Nr. 2.1050            ASTM B505-C90700</p> <p>Impeller: Stainless steel            DIN W.-Nr. 1.4301            AISI 304</p> <p><b>Installation:</b></p> <p>Range of ambient temperature: -30 .. 40 °C            Maximum operating pressure: 16 bar            Flange standard: DIN            Pipe connection: DN 40            Pressure stage: PN 16            Port-to-port length: 320 mm            Flange size for motor: FT100</p> <p><b>Electrical data:</b></p> <p>Motor type: 80B            IE Efficiency class: NA            Rated power - P2: 0.75 kW            Power (P2) required by pump: 0.75 kW            Mains frequency: 50 Hz            Rated voltage: 1 x 220-230/240 V</p>

Position	Qty.	Description
		<p>Rated current: 5,10/4,75 A</p> <p>Starting current: 300 %</p> <p>Cos phi - power factor: 0,99</p> <p>Rated speed: 2780 rpm</p> <p>Efficiency: 72,1%</p> <p>Motor efficiency at full load: 72.1 %</p> <p>Number of poles: 2</p> <p>Enclosure class (IEC 34-5): 55 Dust/Jetting</p> <p>Insulation class (IEC 85): F</p> <p><b>Others:</b></p> <p>Minimum efficiency index, MEI : 0.44</p> <p>ErP status: EuP Standalone/Prod.</p> <p>Net weight: 31.9 kg</p> <p>Gross weight: 35.4 kg</p> <p>Shipping volume: 0.12 m<sup>3</sup></p>

## 98958126 TP 40-190/2 B 50 Hz



Description	Value
<b>General information:</b>	
Product name:	TP 40-190/2 B A-F-Z-BQQE
Product No:	<a href="#">98958126</a>
EAN number:	5712604245934
<b>Technical:</b>	
Speed for pump data:	2855 rpm
Rated flow:	10.5 m <sup>3</sup> /h
Rated head:	13.2 m
Head max:	190 dm
Primary shaft seal:	BQQE
Curve tolerance:	ISO9906:2012 3B
Pump version:	A
Model:	A
<b>Materials:</b>	
Pump housing:	Bronze DIN W.-Nr. 2.1050 ASTM B505-C90700
Impeller:	Stainless steel DIN W.-Nr. 1.4301 AISI 304
Material code:	Z
<b>Installation:</b>	
Range of ambient temperature:	-30 .. 40 °C
Maximum operating pressure:	16 bar
Flange standard:	DIN
Connect code:	F
Pipe connection:	DN 40
Pressure stage:	PN 16
Port-to-port length:	320 mm
Flange size for motor:	FT100
<b>Liquid:</b>	
Pumped liquid:	Water
Liquid temperature range:	-25 .. 120 °C
Liquid temperature during operation:	20 °C
Density:	998.2 kg/m <sup>3</sup>
<b>Electrical data:</b>	
Motor type:	80B
IE Efficiency class:	NA
Rated power - P2:	0.75 kW
Power (P2) required by pump:	0.75 kW
Mains frequency:	50 Hz
Rated voltage:	1 x 220-230/240 V
Rated current:	5,10/4,75 A
Starting current:	300 %
Cos phi - power factor:	0,99
Rated speed:	2780 rpm
Efficiency:	72,1%
Motor efficiency at full load:	72.1 %
Number of poles:	2
Enclosure class (IEC 34-5):	55 Dust/Jetting
Insulation class (IEC 85):	F
Motor protec:	PTO
Motor No:	85215104





Company name:

Created by:

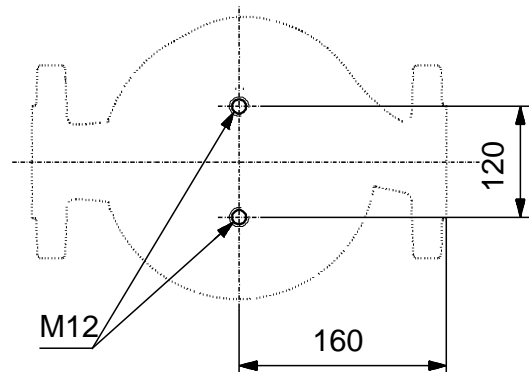
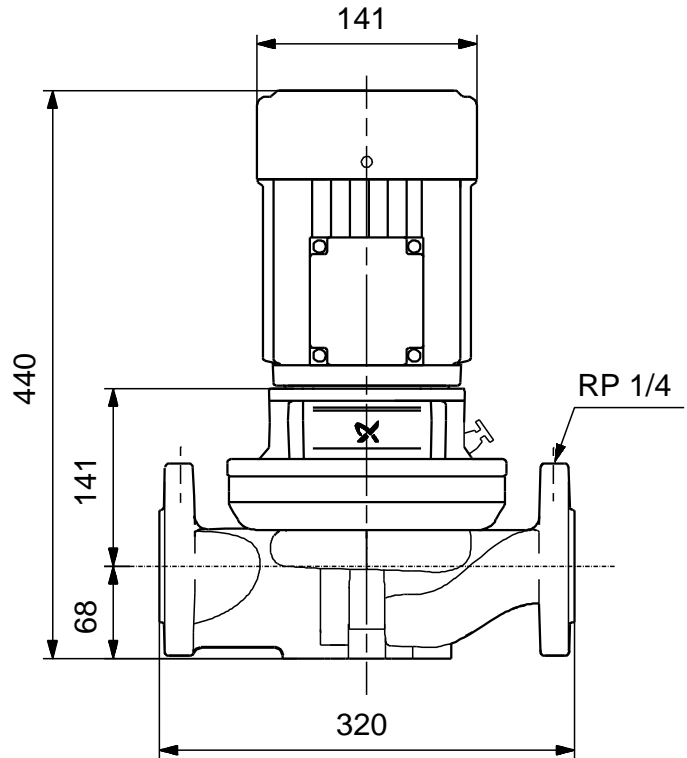
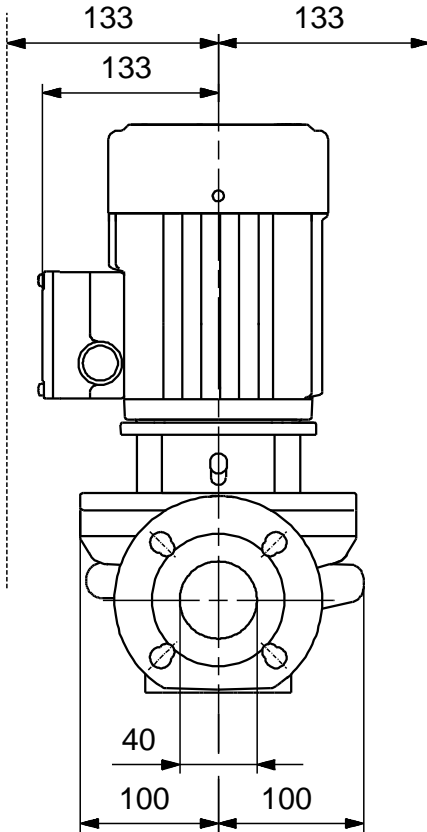
Phone:

Date:

30/06/2017

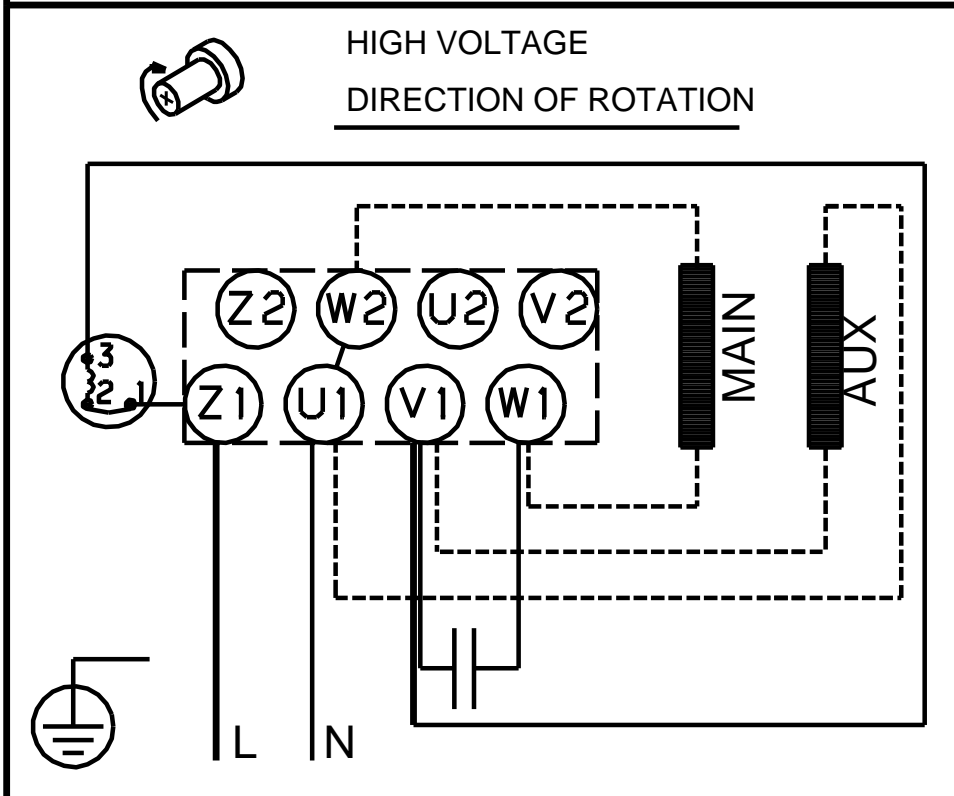
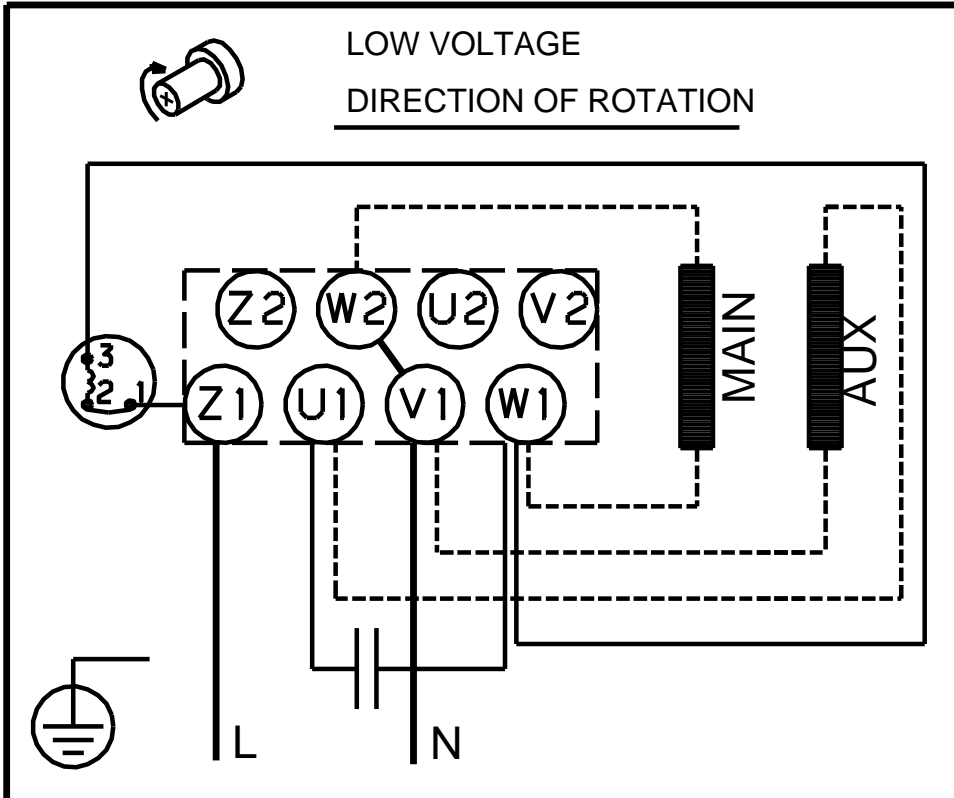
Description	Value
<b>Others:</b>	
Minimum efficiency index, MEI :	0.44
ErP status:	EuP Standalone/Prod.
Net weight:	31.9 kg
Gross weight:	35.4 kg
Shipping volume:	0.12 m <sup>3</sup>

## 98958126 TP 40-190/2 B 50 Hz



Note! All units are in [mm] unless others are stated.  
Disclaimer: This simplified dimensional drawing does not show all details.

## 98958126 TP 40-190/2 B 50 Hz



Note! All units are in [mm] unless others are stated.