


Position	Count	Description
	1	<p>TPD 65-30/4 A-F-A-BQQE</p>  <p>Product No.: 98957990</p> <p>Single-stage, close-coupled, volute twin-head pump with in-line suction and discharge ports of identical diameter. The twin-head pump is designed with two parallel power-heads. The pump is of the top-pull-out design, i.e. the power head (motor, pump head and impeller) can be removed for maintenance or service while the pump housing remains in the pipework.</p> <p>Each power head is fitted with an unbalanced rubber bellows seal. The shaft seal is according to EN 12756. Pipework connection is via PN 6/10 DIN flanges (EN 1092-2 and ISO 7005-2).</p> <p>Each power head is fitted with a fan-cooled asynchronous motor of indential size.</p> <p>Liquid: Pumped liquid: Water Liquid temperature range: -13 .. 248 °F Liquid temperature during operation: 68 °F Density: 62.29 lb/ft³</p> <p>Technical: Rated flow: 94.2 US gpm Rated head: 6.595 ft Actual impeller diameter: 3.74 in Primary shaft seal: BQQE Curve tolerance: ISO9906:2012 3B</p> <p>Materials: Pump housing: Cast iron EN-JL1040 ASTM A48-40 B Impeller: Stainless steel DIN W.-Nr. 1.4301 AISI 304</p> <p>Installation: Range of ambient temperature: -22 .. 104 °F Maximum operating pressure: 145 psi Flange standard: DIN Pipe connection: DN 65 Pump inlet: DN 65 Pump outlet: DN 65 Pressure stage: PN 6/10 (@): 13 7/16 in Flange size for motor: FT85</p> <p>Electrical data: Motor type: 71A Rated power - P2: 2 x 0.33 HP Main frequency: 50 Hz Rated voltage: 3 x 220-240D/380-415Y V Rated current: 1.48/0.85 A</p>



Company name:

Created by:

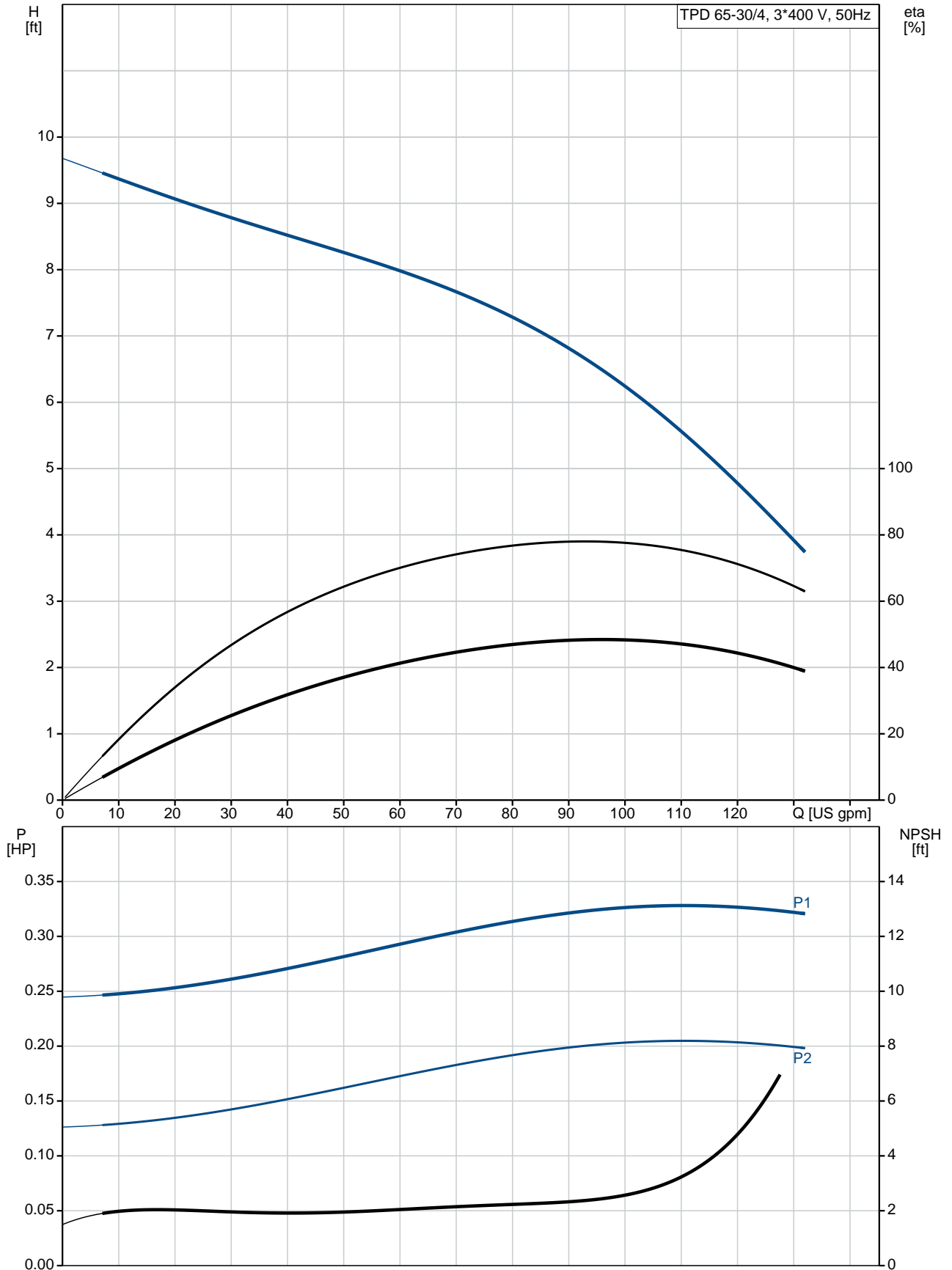
Phone:

Date:

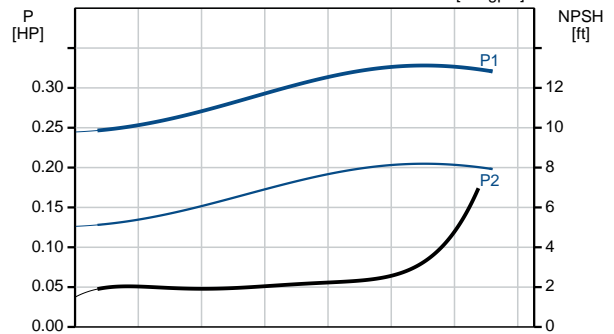
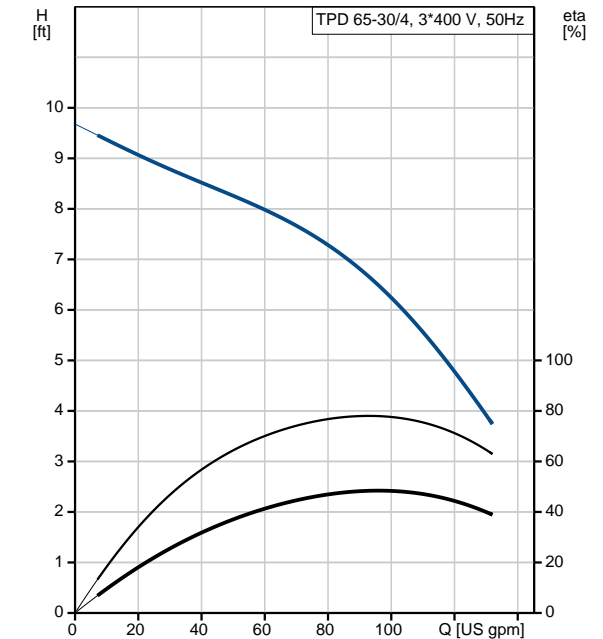
10/9/2018

Position	Count	Description
		Starting current: 400-440 % Cos phi - power factor: 0.75-0.65 Rated speed: 1400-1420 rpm IE efficiency: 61,5% - 68,5% Motor efficiency at full load: 61.5-68.5 % Motor efficiency at 3/4 load: 70 % Motor efficiency at 1/2 load: 63.9 % Number of poles: 4 Enclosure class (IEC 34-5): 55 Dust/Jetting Insulation class (IEC 85): F Others: Minimum efficiency index, MEI : 0.70 ErP status: EuP Standalone/Prod. Net weight: 135 lb Gross weight: 151 lb Shipping volume: 7.77 ft ³ Country of origin: HU Custom tariff no.: 84137051

98957990 TPD 65-30/4 A-F-A-BQQE 50 Hz



Description	Value
General information:	
Product name:	TPD 65-30/4 A-F-A-BQQE
Product No.:	98957990
EAN:	5712604244579
Technical:	
Rated flow:	94.2 US gpm
Rated head:	6.595 ft
Head max:	9.843 ft
Actual impeller diameter:	3.74 in
Primary shaft seal:	BQQE
Curve tolerance:	ISO9906:2012 3B
Pump version:	A
Model:	A
Materials:	
Pump housing:	Cast iron
	EN-JL1040
	ASTM A48-40 B
Impeller:	Stainless steel
	DIN W.-Nr. 1.4301
	AISI 304
Material code:	A
Installation:	
Range of ambient temperature:	-22 .. 104 °F
Maximum operating pressure:	145 psi
Flange standard:	DIN
Pipe connection:	DN 65
Pump inlet:	DN 65
Pump outlet:	DN 65
Pressure stage:	PN 6/10
(@)	13 7/16 in
Flange size for motor:	FT85
Connect code:	F
Liquid:	
Pumped liquid:	Water
Liquid temperature range:	-13 .. 248 °F
Liquid temperature during operation:	68 °F
Density:	62.29 lb/ft ³
Electrical data:	
Motor type:	71A
Rated power - P2:	2 x 0.33 HP
Main frequency:	50 Hz
Rated voltage:	3 x 220-240D/380-415Y V
Rated current:	1.48/0.85 A
Starting current:	400-440 %
Cos phi - power factor:	0.75-0.65
Rated speed:	1400-1420 rpm
IE efficiency:	61,5% - 68,5%
Motor efficiency at full load:	61.5-68.5 %
Motor efficiency at 3/4 load:	70 %
Motor efficiency at 1/2 load:	63.9 %
Number of poles:	4
Enclosure class (IEC 34-5):	55 Dust/Jetting
Insulation class (IEC 85):	F
Motor protection:	NONE
Motor Number:	86805101
Others:	
Minimum efficiency index, MEI :	0.70
ErP status:	EuP Standalone/Prod.





Company name:

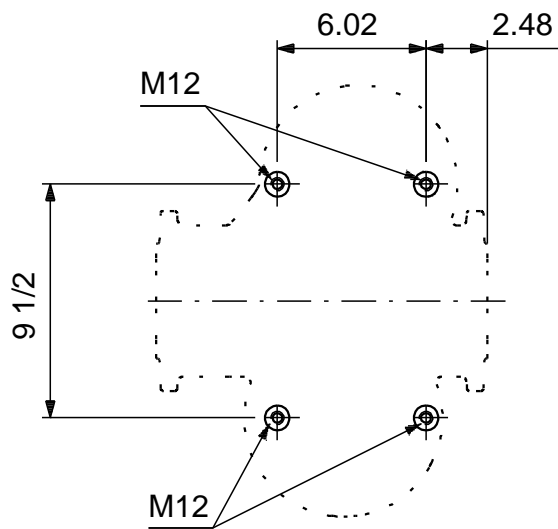
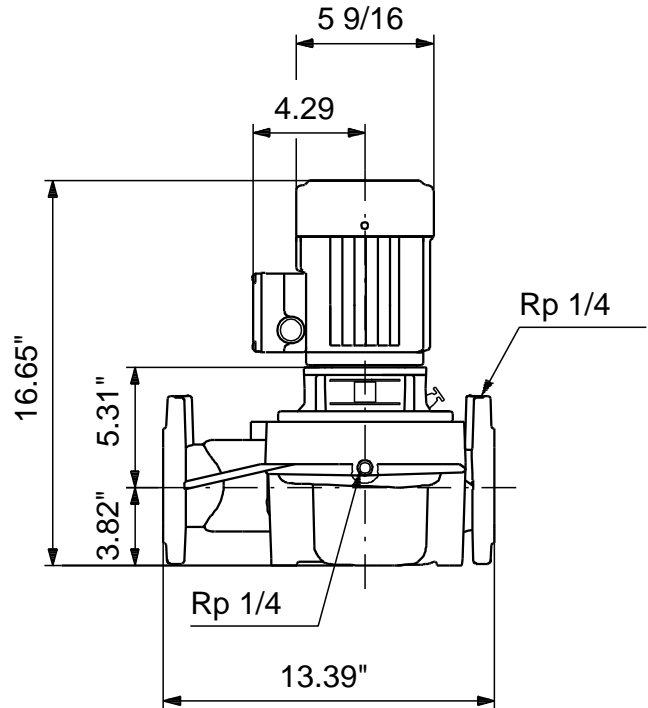
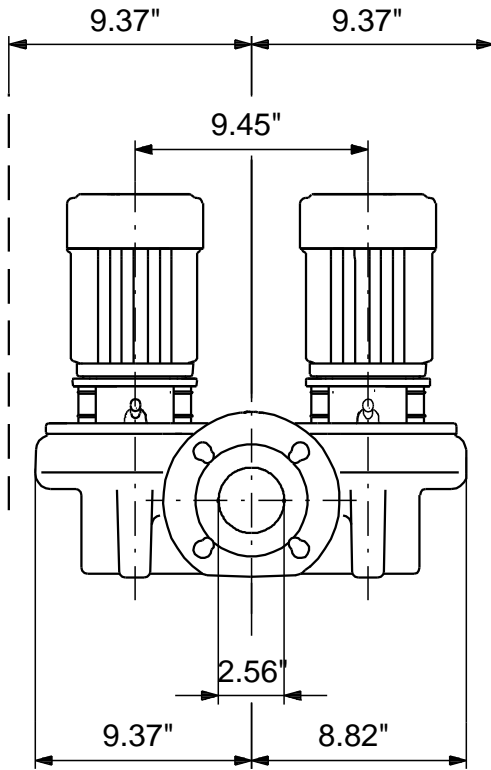
Created by:

Phone:

Date: 10/9/2018

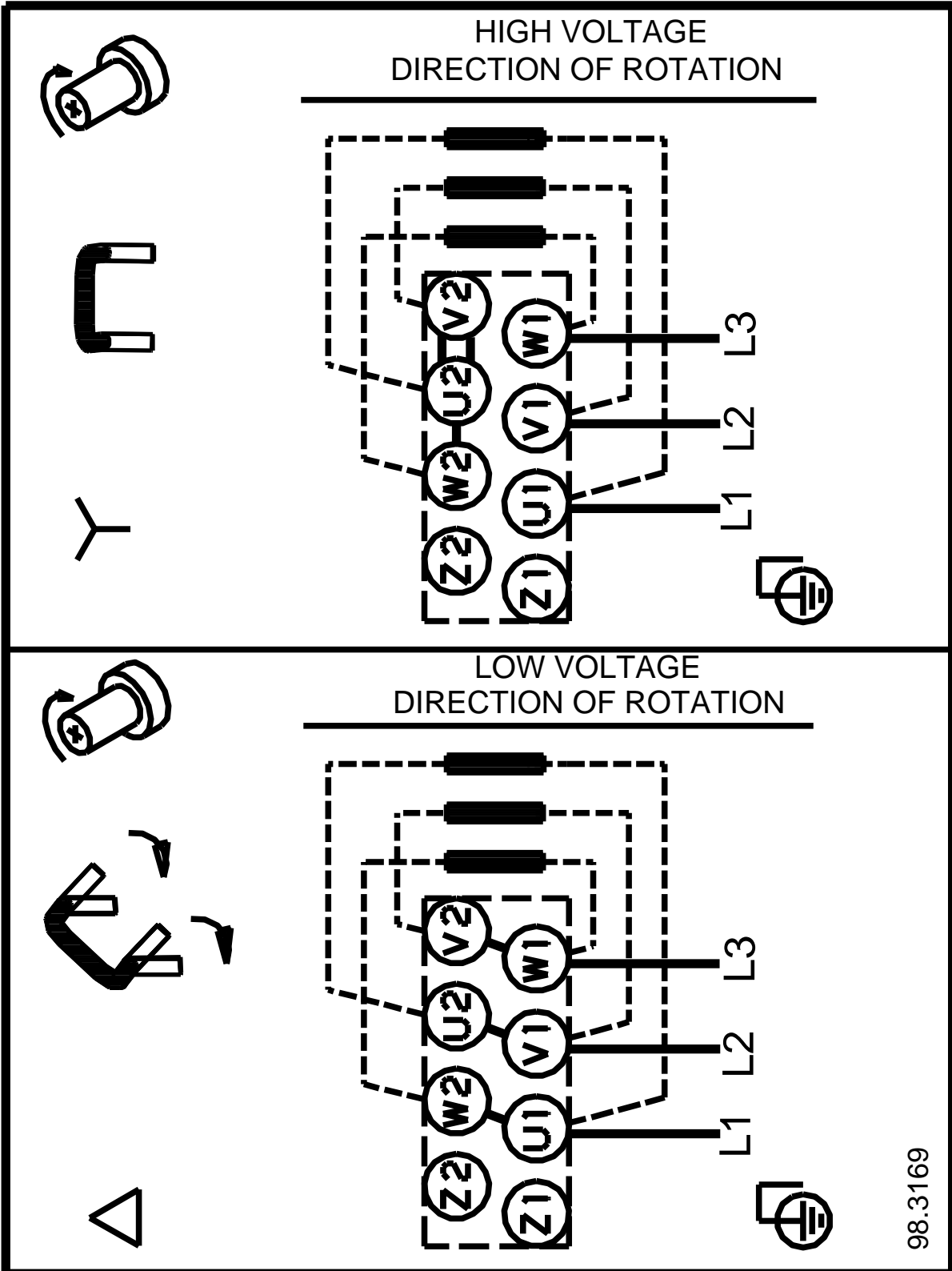
Description	Value
Net weight:	135 lb
Gross weight:	151 lb
Shipping volume:	7.77 ft ³
Country of origin:	HU
Custom tariff no.:	84137051

98957990 TPD 65-30/4 A-F-A-BQQE 50 Hz



Note! All units are in [mm] unless otherwise stated.
Disclaimer: This simplified dimensional drawing does not show all details.

98957990 TPD 65-30/4 A-F-A-BQQE 50 Hz



98.3169

All units are [mm] unless otherwise presented.