


Position	Count	Description
	1	<p><b>TPD 50-140/4 A-F-A-BQQE</b></p>  <p>Product No.: <a href="#">98742918</a></p> <p>Single-stage, close-coupled, volute twin-head pump with in-line suction and discharge ports of identical diameter. The twin-head pump is designed with two parallel power-heads. The pump is of the top-pull-out design, i.e. the power head (motor, pump head and impeller) can be removed for maintenance or service while the pump housing remains in the pipework.</p> <p>Each power head is fitted with an unbalanced rubber bellows seal. The shaft seal is according to EN 12756. Pipework connection is via PN 16 DIN flanges (EN 1092-2 and ISO 7005-2).</p> <p>Each power head is fitted with a fan-cooled asynchronous motor of indential size.</p> <p><b>Liquid:</b>  Pumped liquid: Water  Liquid temperature range: -13 .. 248 °F  Liquid temperature during operation: 68 °F  Density: 62.29 lb/ft<sup>3</sup></p> <p><b>Technical:</b>  Rated flow: 87.6 US gpm  Rated head: 38.06 ft  Actual impeller diameter: 8.46 in  Primary shaft seal: BQQE  Curve tolerance: ISO9906:2012 3B</p> <p><b>Materials:</b>  Pump housing: Cast iron  EN-JL1040  ASTM A48-40 B  Impeller: Cast iron  EN-JL1030  ASTM A48-30 B</p> <p><b>Installation:</b>  Range of ambient temperature: -22 .. 140 °F  Maximum operating pressure: 232 psi  Flange standard: DIN  Pipe connection: DN 50  Pump inlet: DN 50  Pump outlet: DN 50  Pressure stage: PN 16  (@): 17 3/8 in  Flange size for motor: FF165</p> <p><b>Electrical data:</b>  Motor type: 90LC  IE Efficiency class: IE3  Rated power - P2: 2 x 2 HP  Main frequency: 50 Hz  Rated voltage: 3 x 220-240D/380-415Y V</p>



Company name:

Created by:

Phone:

Date:

10/9/2018

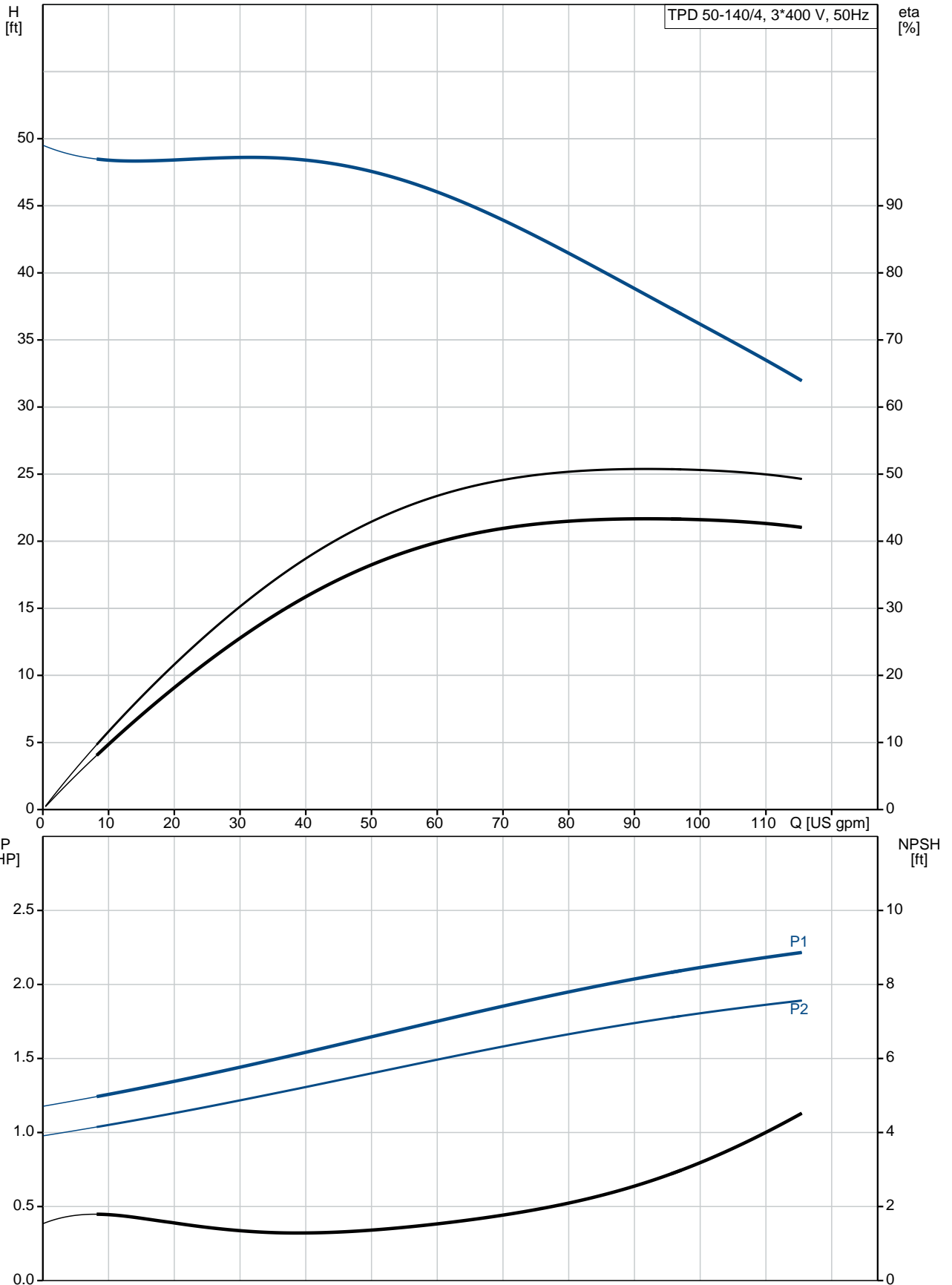
Position	Count	Description
		Rated current: 6,15-6,30/3,55-3,65 A Starting current: 730-790 % Cos phi - power factor: 0.75-0.68 Rated speed: 1450-1460 rpm IE efficiency: IE3 85,3% Motor efficiency at full load: 85.3 % Motor efficiency at 3/4 load: 85.8 % Motor efficiency at 1/2 load: 84.2 % Number of poles: 4 Enclosure class (IEC 34-5): 55 Dust/Jetting Insulation class (IEC 85): F  <b>Others:</b> Minimum efficiency index, MEI : 0.7 ErP status: EuP Standalone/Prod. Net weight: 311 lb Gross weight: 342 lb Shipping volume: 18.4 ft <sup>3</sup> Country of origin: HU Custom tariff no.: 84137051



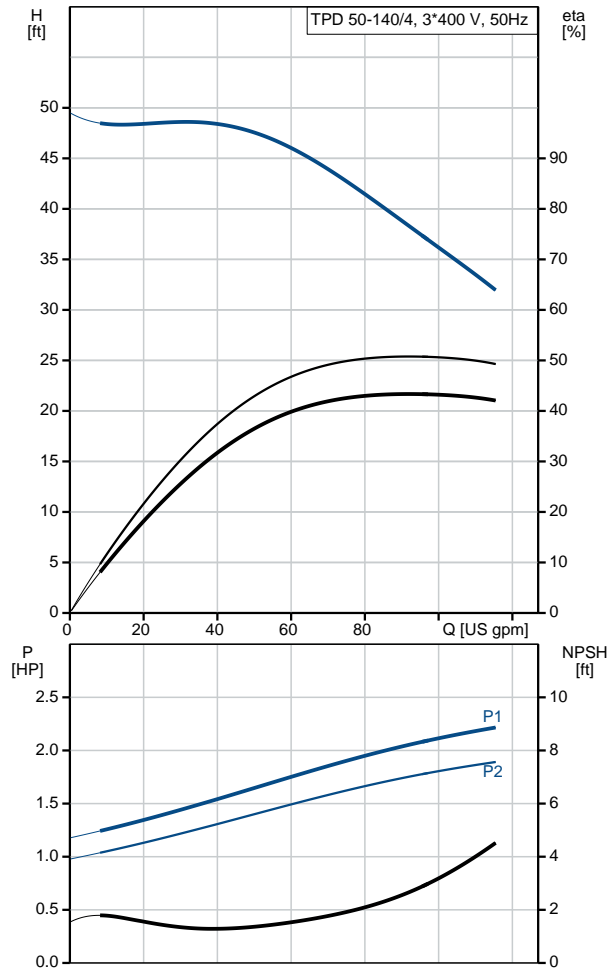
Company name:  
Created by:  
Phone:

Date: 10/9/2018

### 98742918 TPD 50-140/4 A-F-A-BQQE 50 Hz



Description	Value
<b>General information:</b>	
Product name:	TPD 50-140/4 A-F-A-BQQE
Product No.:	98742918
EAN:	5712600816299
<b>Technical:</b>	
Rated flow:	87.6 US gpm
Rated head:	38.06 ft
Head max:	45.93 ft
Actual impeller diameter:	8.46 in
Primary shaft seal:	BQQE
Curve tolerance:	ISO9906:2012 3B
Pump version:	A
Model:	A
<b>Materials:</b>	
Pump housing:	Cast iron EN-JL1040 ASTM A48-40 B
Impeller:	Cast iron EN-JL1030 ASTM A48-30 B
Material code:	A
<b>Installation:</b>	
Range of ambient temperature:	-22 .. 140 °F
Maximum operating pressure:	232 psi
Flange standard:	DIN
Pipe connection:	DN 50
Pump inlet:	DN 50
Pump outlet:	DN 50
Pressure stage:	PN 16
(@)	17 3/8 in
Flange size for motor:	FF165
Connect code:	F
<b>Liquid:</b>	
Pumped liquid:	Water
Liquid temperature range:	-13 .. 248 °F
Liquid temperature during operation:	68 °F
Density:	62.29 lb/ft³
<b>Electrical data:</b>	
Motor type:	90LC
IE Efficiency class:	IE3
Rated power - P2:	2 x 2 HP
Main frequency:	50 Hz
Rated voltage:	3 x 220-240D/380-415Y V
Rated current:	6,15-6,30/3,55-3,65 A
Starting current:	730-790 %
Cos phi - power factor:	0.75-0.68
Rated speed:	1450-1460 rpm
IE efficiency:	IE3 85,3%
Motor efficiency at full load:	85.3 %
Motor efficiency at 3/4 load:	85.8 %
Motor efficiency at 1/2 load:	84.2 %
Number of poles:	4
Enclosure class (IEC 34-5):	55 Dust/Jetting
Insulation class (IEC 85):	F
Motor protection:	NONE
Motor Number:	87220319
<b>Others:</b>	
Minimum efficiency index, MEI :	0.7





Company name:

Created by:

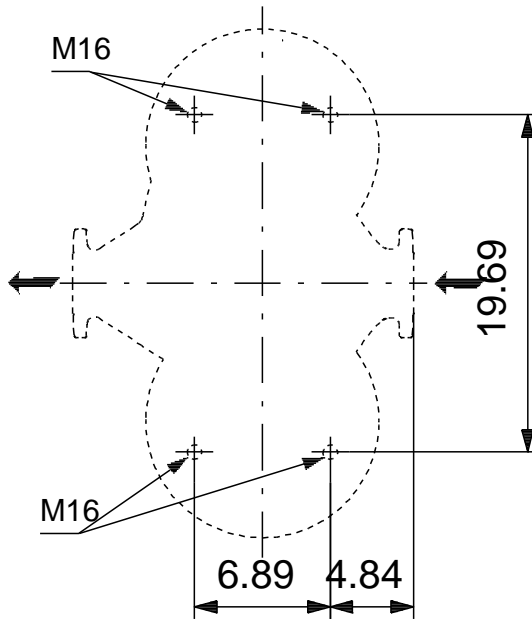
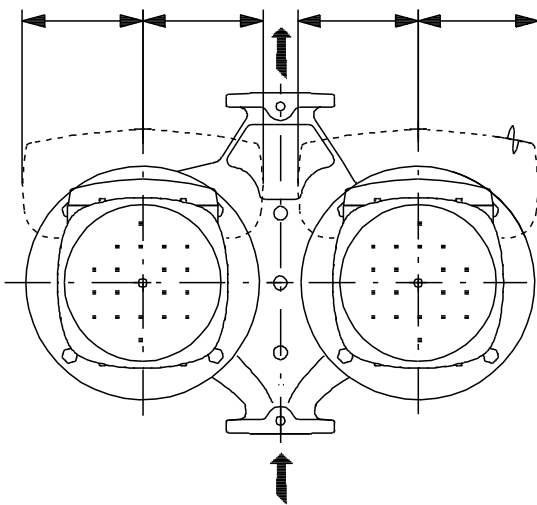
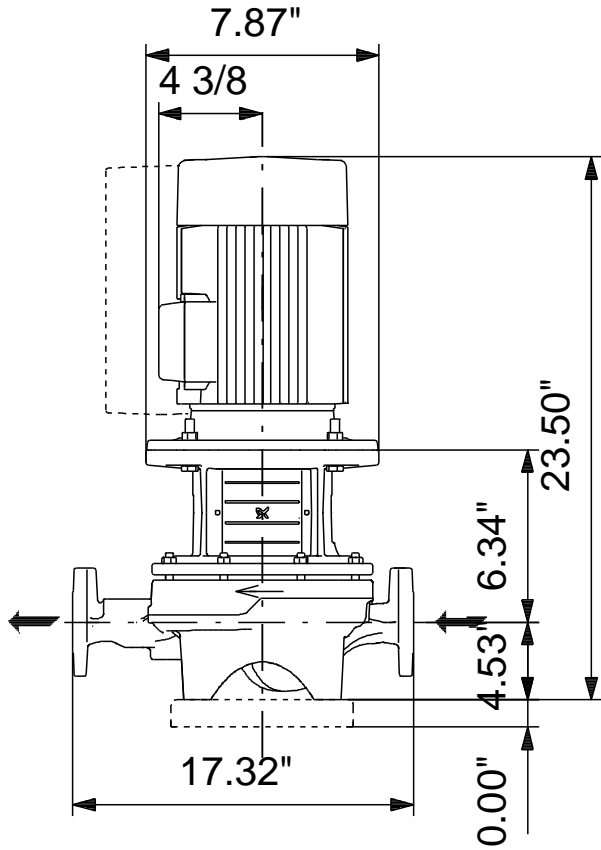
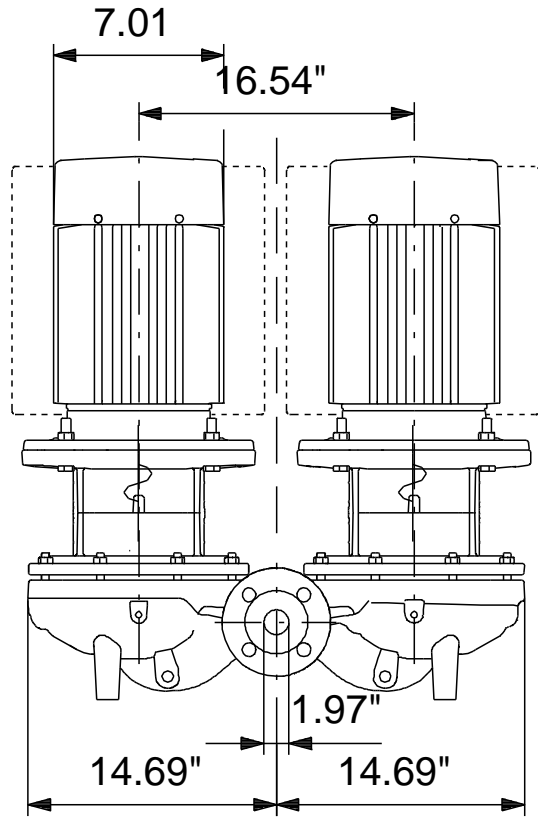
Phone:

Date:

10/9/2018

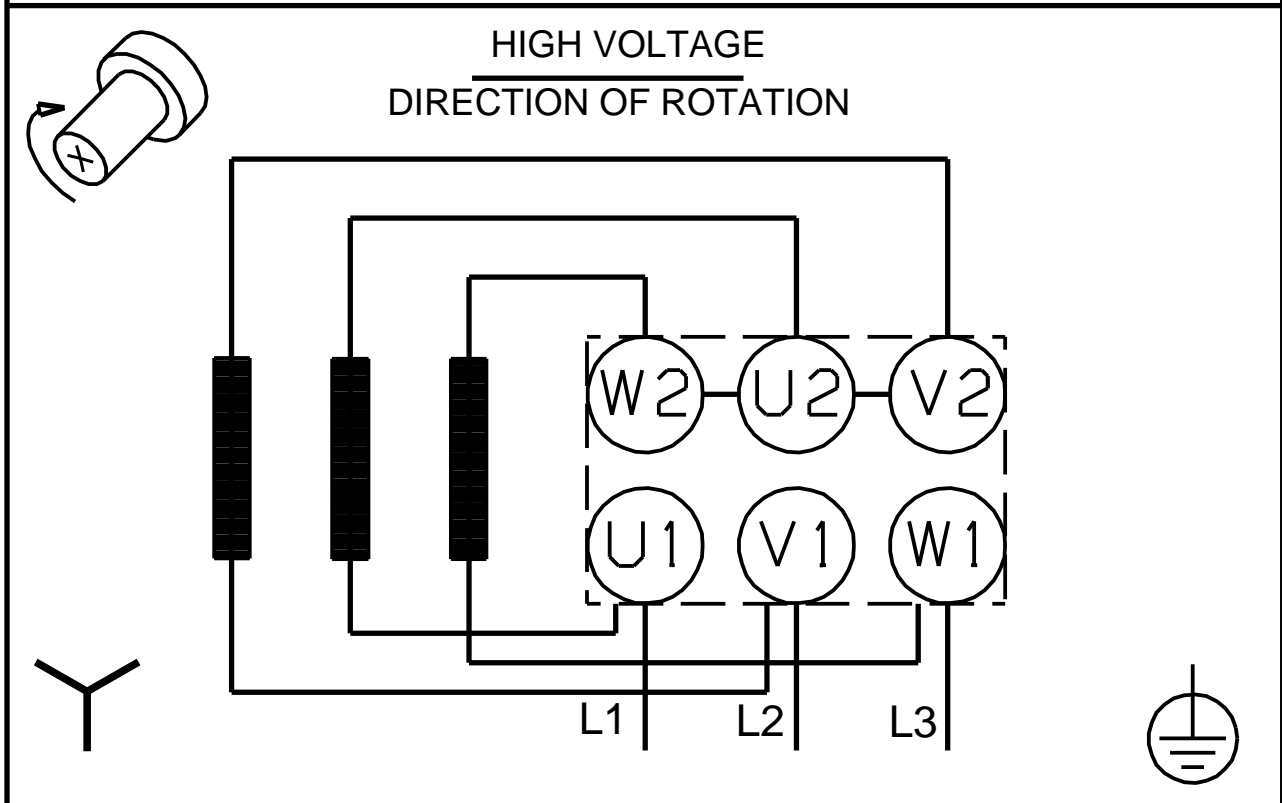
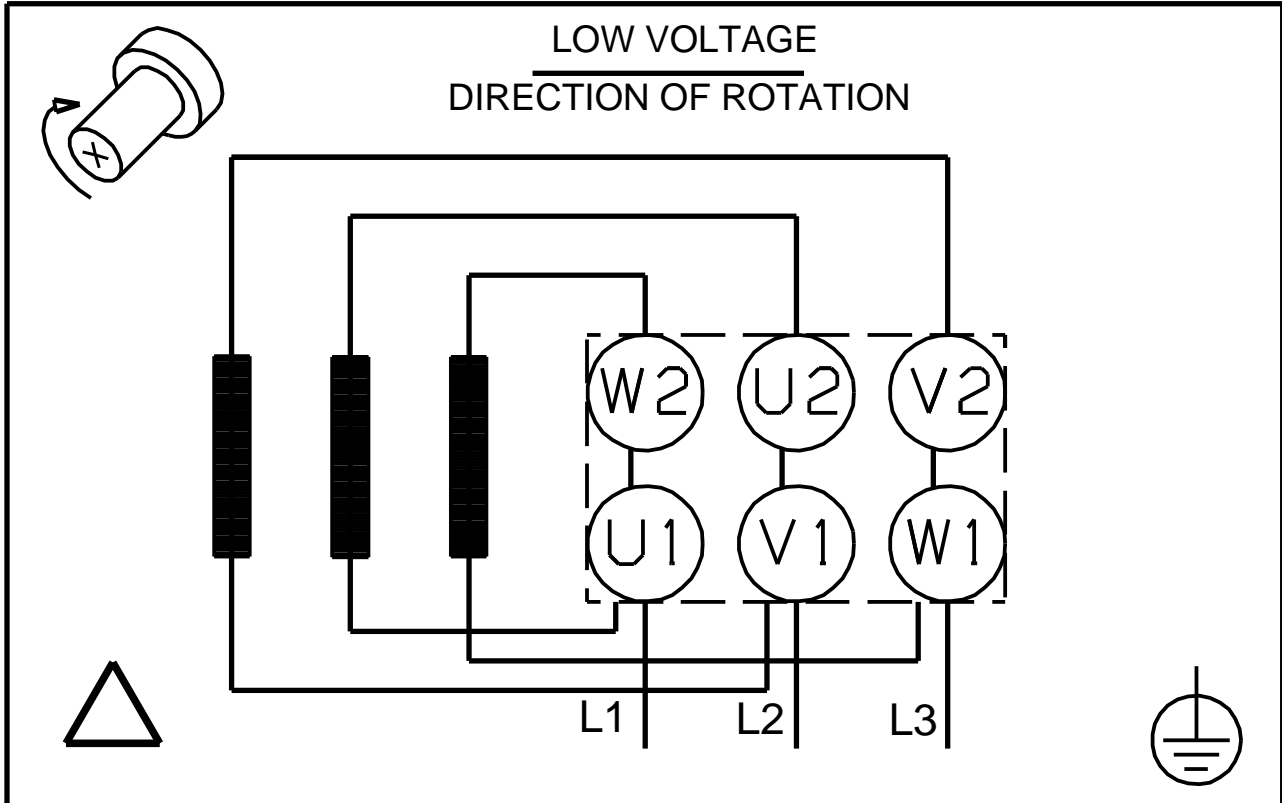
Description	Value
ErP status:	EuP Standalone/Prod.
Net weight:	311 lb
Gross weight:	342 lb
Shipping volume:	18.4 ft <sup>3</sup>
Country of origin:	HU
Custom tariff no.:	84137051

**98742918 TPD 50-140/4 A-F-A-BQQE 50 Hz**



Note! All units are in [mm] unless otherwise stated.  
Disclaimer: This simplified dimensional drawing does not show all details.

## 98742918 TPD 50-140/4 A-F-A-BQQE 50 Hz



All units are [mm] unless otherwise presented.