


Position	Qty.	Description
	1	<p>TP 40-50/2 A-F-I-BQQE</p>  <p>Note! Product picture may differ from actual product</p> <p>Product No.: 98346618</p> <p>Single-stage, close-coupled, volute pump with in-line suction and discharge ports of identical diameter. The pump is of the top-pull-out design, i.e. the power head (motor, pump head and impeller) can be removed for maintenance or service while the pump housing remains in the pipework.</p> <p>The pump is fitted with an unbalanced rubber bellows seal. The shaft seal is according to EN 12756. Pipework connection is via PN 6/10 DIN flanges (EN 1092-2 and ISO 7005-2).</p> <p>The pump is fitted with a fan-cooled asynchronous motor.</p> <p>Liquid:</p> <p>Pumped liquid: Water</p> <p>Liquid temperature range: -25 .. 120 °C</p> <p>Liquid temperature during operation: 20 °C</p> <p>Density: 998.2 kg/m³</p> <p>Technical:</p> <p>Speed for pump data: 2800 rpm</p> <p>Rated flow: 5.61 m³/h</p> <p>Rated head: 2.95 m</p> <p>Primary shaft seal: BQQE</p> <p>Curve tolerance: ISO9906:2012 3B</p> <p>Materials:</p> <p>Pump housing: Stainless steel DIN W.-Nr. 1.4308 ASTM CF8</p> <p>Impeller: Composite PES/PP 30% GF</p> <p>Installation:</p> <p>Range of ambient temperature: -30 .. 40 °C</p> <p>Maximum operating pressure: 10 bar</p> <p>Flange standard: DIN</p> <p>Pipe connection: DN 40</p> <p>Pressure stage: PN 6/10</p> <p>Port-to-port length: 250 mm</p> <p>Flange size for motor: FT75</p> <p>Electrical data:</p> <p>Motor type: SIEMENS</p> <p>IE Efficiency class: NA</p> <p>Rated power - P2: 0.12 kW</p> <p>Power (P2) required by pump: 0.12 kW</p> <p>Mains frequency: 50 Hz</p> <p>Rated voltage: 3 x 220-240D/380-415Y V</p> <p>Rated current: 0,59/0,34 A</p> <p>Cos phi - power factor: 0,80-0,72</p>



Company name:

Created by:

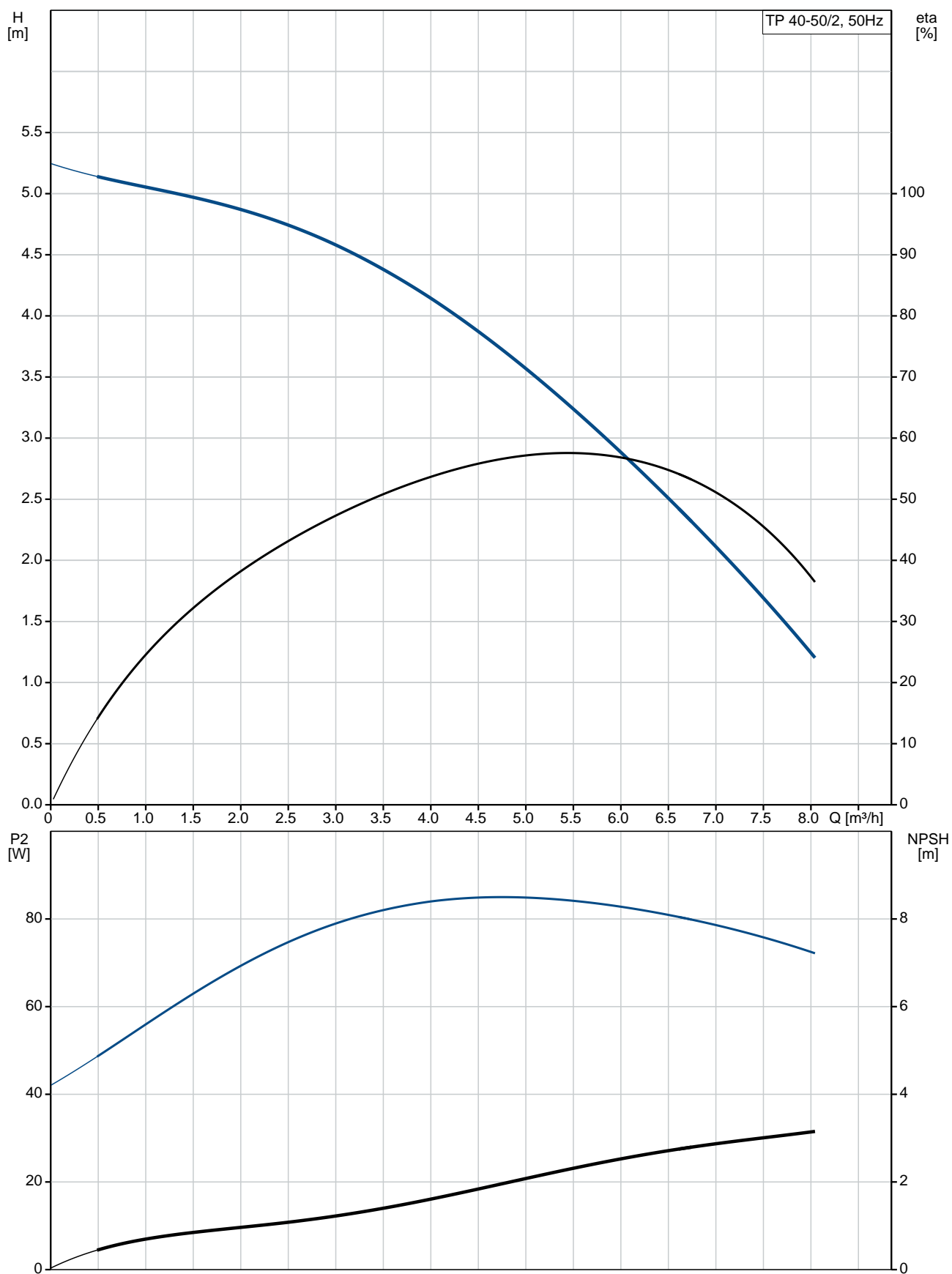
Phone:

Date:

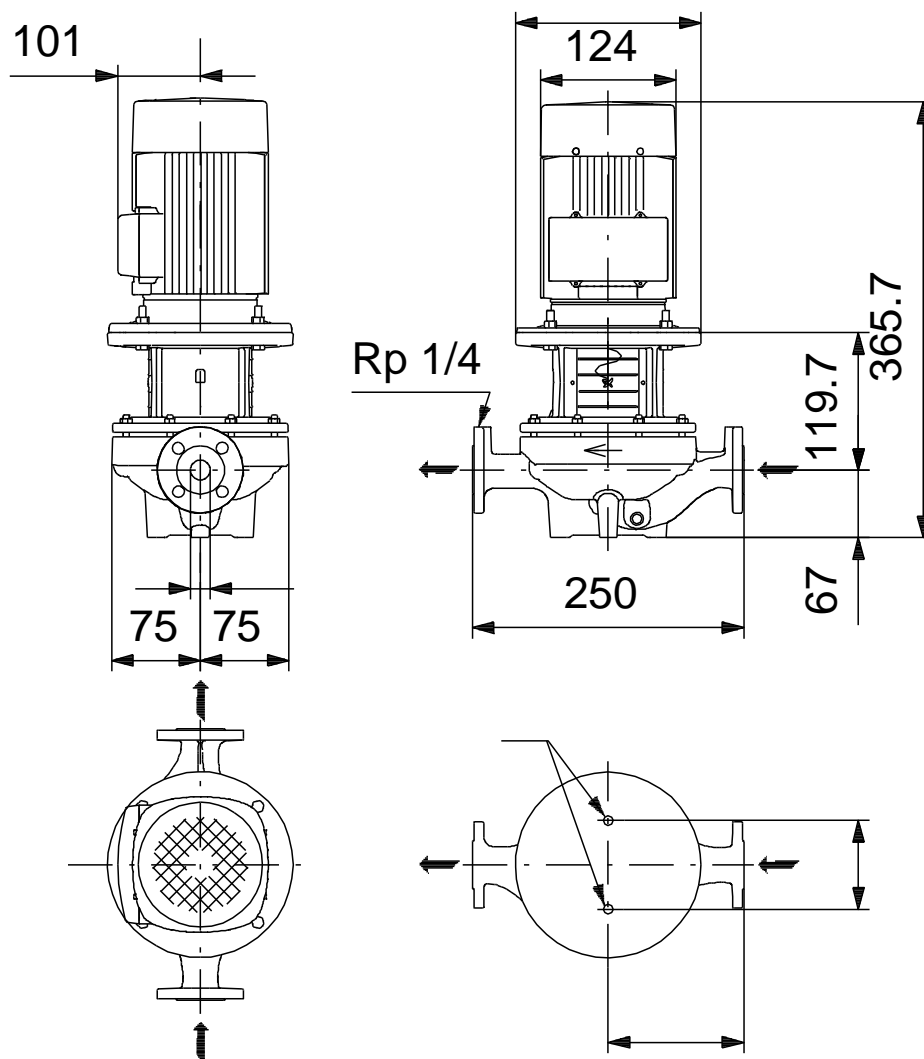
30/06/2017

Position	Qty.	Description
		<div>Rated speed: 2800-2850 rpm</div> <div>Number of poles: 2</div> <div>Enclosure class (IEC 34-5): 55 Dust/Jetting</div> <div>Insulation class (IEC 85): F</div> <div>Others:</div> <div>Minimum efficiency index, MEI : --.-</div> <div>ErP status: EuP Standalone/Prod.</div> <div>Net weight: 11.3 kg</div> <div>Gross weight: 12.3 kg</div> <div>Shipping volume: 0.02 m³</div> <div>Danish: VVS NO 381872050</div>

98346618 TP 40-50/2 50 Hz

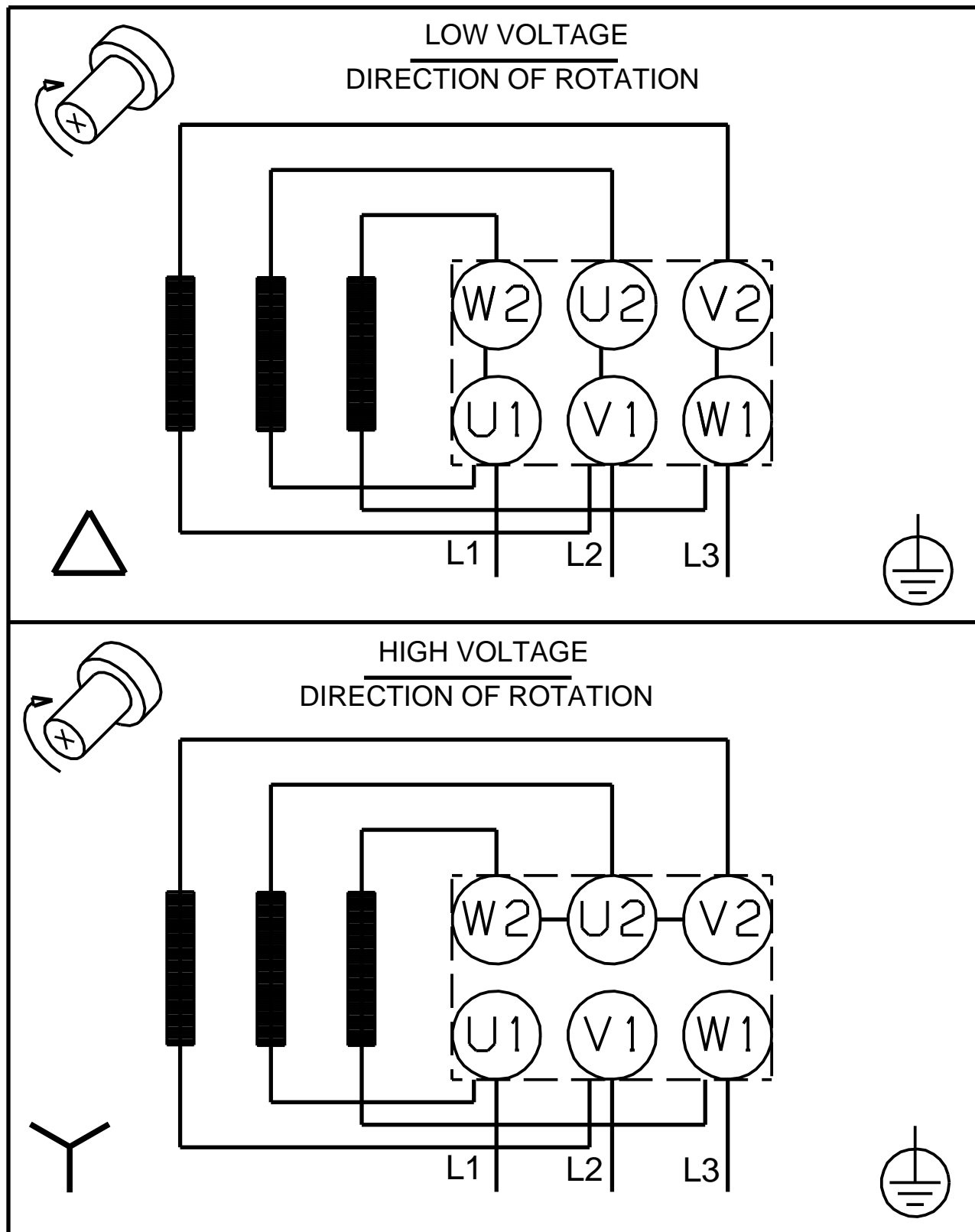


98346618 TP 40-50/2 50 Hz



Note! All units are in [mm] unless others are stated.
Disclaimer: This simplified dimensional drawing does not show all details.

98346618 TP 40-50/2 50 Hz



Note! All units are in [mm] unless others are stated.