

Qty. Description

1 **SQE 2-100**



Note! Product picture may differ from actual product

Product No.: [96510154](#)

3" multi-stage, submersible pump designed for domestic water supply, liquid transfer in tanks, irrigation and environmental applications. The pump has "floating" impellers, each with its own tungsten carbide/ceramic bearing.

The pump features soft starting and protection against dry-running, upthrust, overvoltage, undervoltage, overload and overtemperature.

The motor is a single-phase motor of the permanent magnet rotor type ensuring optimum efficiency within a wide load range.

The motor is fitted with a replaceable end cover with socket.

Liquid:

Pumped liquid: Water
 Maximum liquid temperature: 35 °C
 Max liquid t at 0.15 m/sec: 35 °C
 Selected liquid temperature: 20 °C
 Density at selected liquid temperature: 998.2 kg/m³

Technical:

Pump speed on which pump data are based: 10700 rpm
 Rated flow: 2 m³/h
 Rated head: 108 m
 Approvals on motor nameplate: CE,UL,CUL
 Curve tolerance: ISO9906:2012 3B

Materials:

Pump: Polyamide / Stainless steel
 DIN W.-Nr. 1.4301
 AISI 304
 Impeller: Polyamide
 Motor: Stainless steel
 DIN W.-Nr. 1.4301
 AISI 304

Installation:

Pump outlet: Rp 1 1/4
 Minimum borehole diameter: 76 mm

Electrical data:

Motor type: MSE3
 Power input - P1: 2.32 kW



Company name:

Created by:

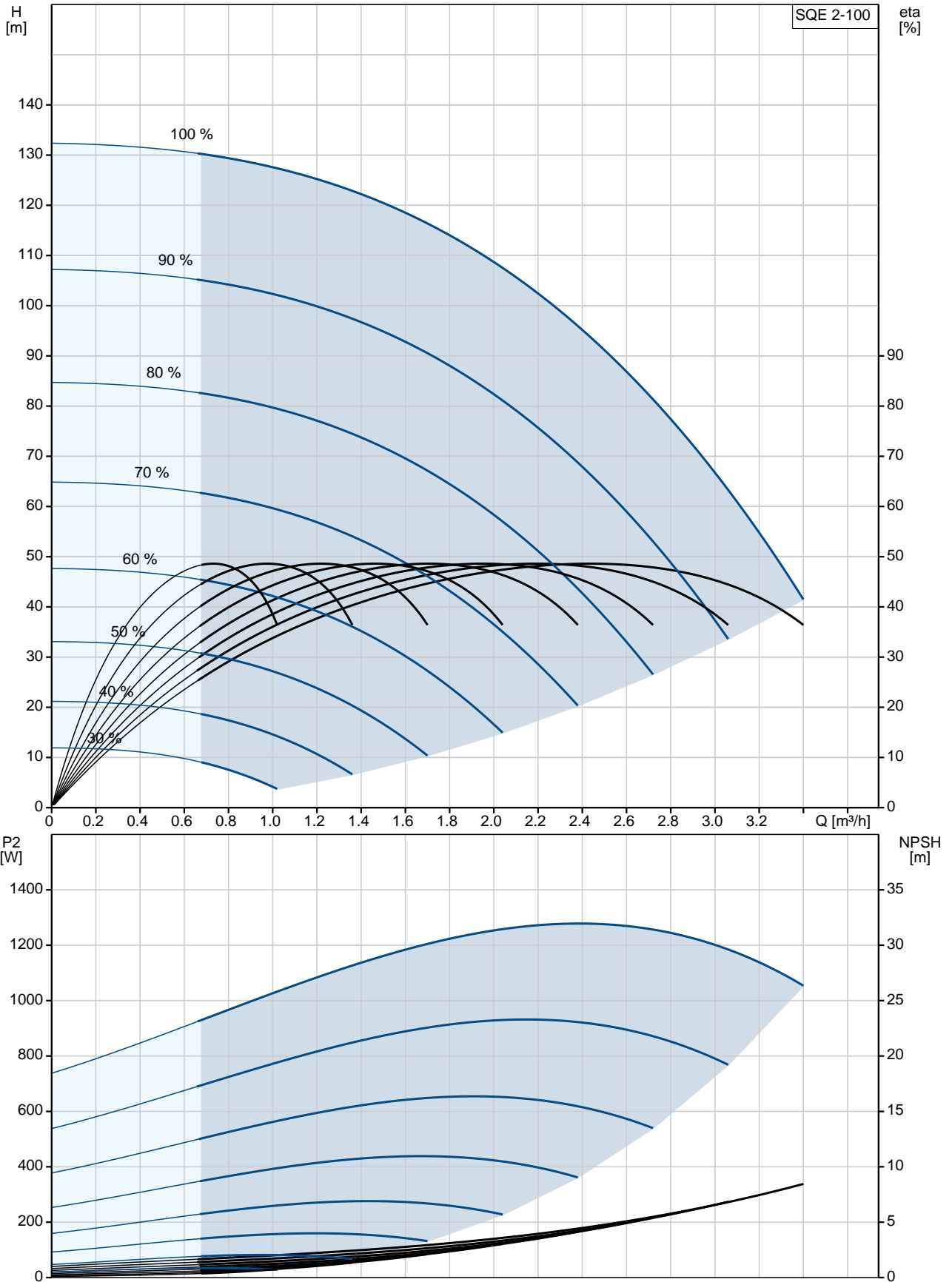
Phone:

Date:

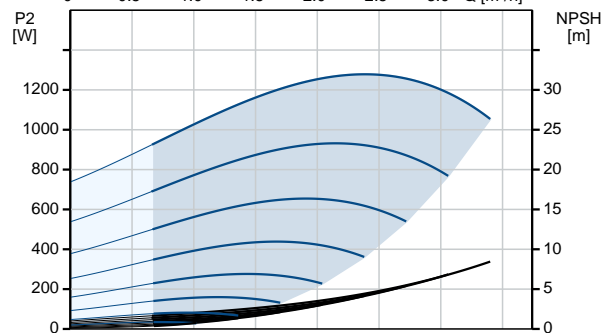
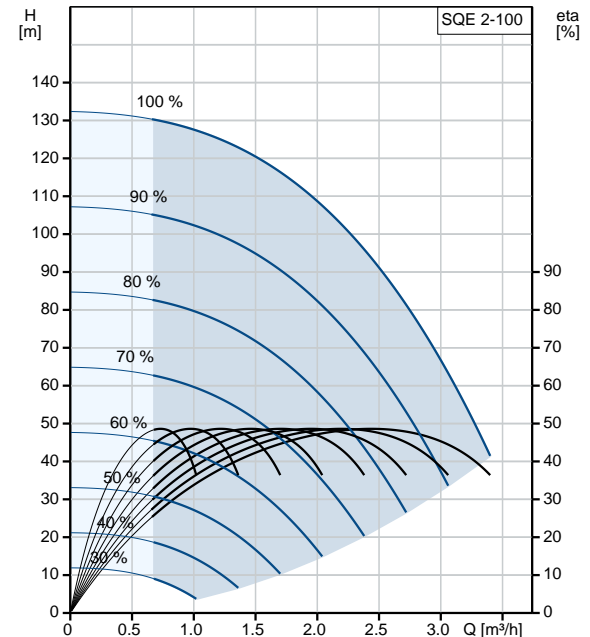
09/04/2019

Qty.	Description
	Rated power - P2: 1.55 kW
	Mains frequency: 50 Hz
	Rated voltage: 1 x 200-240 V
	Rated current: 11.2 A
	Power factor: 1.00
	Rated speed: 10700 rpm
	Start. method: direct-on-line
	Enclosure class (IEC 34-5): IP68
	Insulation class (IEC 85): F
	Length of cable: 1.5 m
	Motor No: 96160856
	Others:
	Net weight: 6.2 kg
	Gross weight: 6.8 kg
	Shipping volume: 0.01 m ³
	Danish VVS No.: 388442500
	Swedish RSK No.: 5853373
	Finnish LVI No.: 4762533
	Norwegian NRF no.: 9041354
	Country of origin: DE
	Custom tariff no.: 84137029

96510154 SQE 2-100 50 Hz



Description	Value
General information:	
Product name:	SQE 2-100
Product No:	96510154
EAN number:	5700396502526
Technical:	
Pump speed on which pump data are based:	10700 rpm
Rated flow:	2 m ³ /h
Rated head:	108 m
Stages:	6
Approvals on motor nameplate:	CE,UL,CUL
Curve tolerance:	ISO9906:2012 3B
Pump No:	96080405
Model:	B
Valve:	pump with built-in non-return valve
Materials:	
Pump:	Polyamide / Stainless steel DIN W.-Nr. 1.4301 AISI 304
Impeller:	Polyamide
Motor:	Stainless steel DIN W.-Nr. 1.4301 AISI 304
Installation:	
Pump outlet:	Rp 1 1/4
Minimum borehole diameter:	76 mm
Liquid:	
Pumped liquid:	Water
Maximum liquid temperature:	35 °C
Max liquid t at 0.15 m/sec:	35 °C
Selected liquid temperature:	20 °C
Density at selected liquid temperature:	998.2 kg/m ³
Electrical data:	
Motor type:	MSE3
Power input - P1:	2.32 kW
Rated power - P2:	1.55 kW
Mains frequency:	50 Hz
Rated voltage:	1 x 200-240 V
Rated current:	11.2 A
Power factor:	1.00
Rated speed:	10700 rpm
Start. method:	direct-on-line
Enclosure class (IEC 34-5):	IP68
Insulation class (IEC 85):	F
Motor protec:	Y
Thermal protec:	internal
Length of cable:	1.5 m
Motor No:	96160856
Controls:	
CU 300/CU 301:	communication with CU 300/CU 301 possible
Others:	
Net weight:	6.2 kg
Gross weight:	6.8 kg
Shipping volume:	0.01 m ³
Sales region:	EU/S-AMREG/APREG
Danish VVS No.:	388442500





Company name:

Created by:

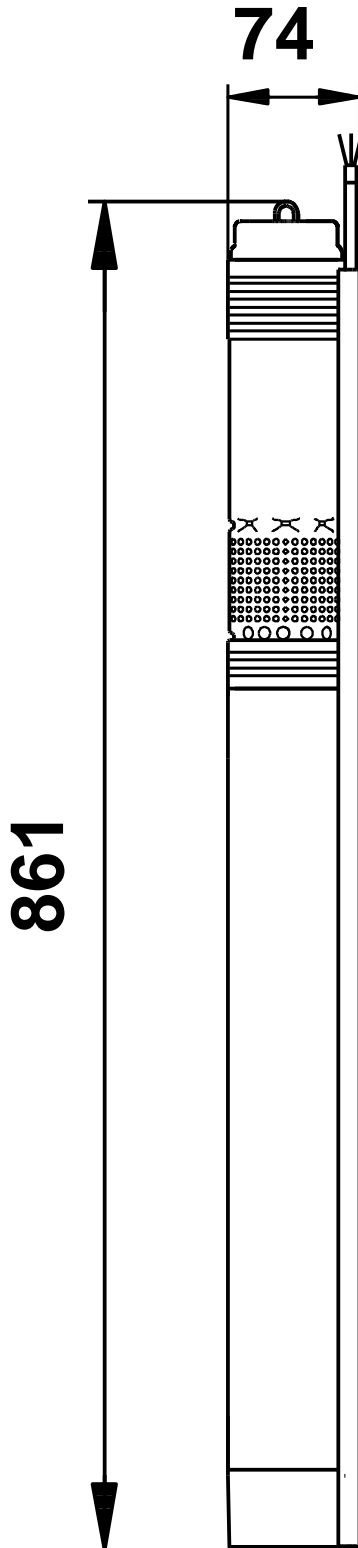
Phone:

Date:

09/04/2019

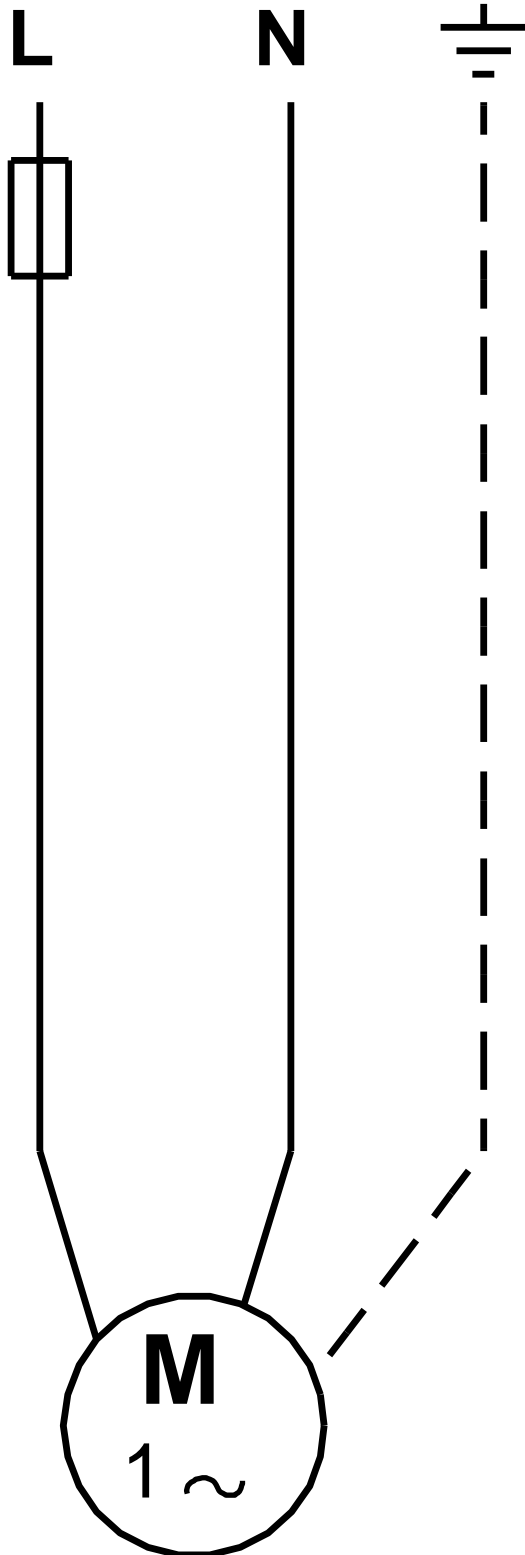
Description	Value
Swedish RSK No.:	5853373
Finnish LVI No.:	4762533
Norwegian NRF no.:	9041354
Country of origin:	DE
Custom tariff no.:	84137029

96510154 SQE 2-100 50 Hz



Note! All units are in [mm] unless others are stated.
Disclaimer: This simplified dimensional drawing does not show all details.

96510154 SQE 2-100 50 Hz



Note! All units are in [mm] unless others are stated.



Company name:

Created by:

Phone:

Date:

09/04/2019

Order Data:

Product name: SQE 2-100

Amount: 1

Product No: 96510154

Total: Price on request
