

**Qty. Description**

1 **SQE 1-125**



**Note! Product picture may differ from actual product**

Product No.: [96510146](#)

3" multi-stage, submersible pump designed for domestic water supply, liquid transfer in tanks, irrigation and environmental applications. The pump has "floating" impellers, each with its own tungsten carbide/ceramic bearing.

The pump features soft starting and protection against dry-running, upthrust, overvoltage, undervoltage, overload and overtemperature.

The motor is a single-phase motor of the permanent magnet rotor type ensuring optimum efficiency within a wide load range.

The motor is fitted with a replaceable end cover with socket.

**Liquid:**

Pumped liquid: Water  
 Maximum liquid temperature: 35 °C  
 Max liquid t at 0.15 m/sec: 35 °C  
 Selected liquid temperature: 20 °C  
 Density at selected liquid temperature: 998.2 kg/m<sup>3</sup>

**Technical:**

Pump speed on which pump data are based: 10700 rpm  
 Rated flow: 1 m<sup>3</sup>/h  
 Rated head: 135 m  
 Approvals on motor nameplate: CE,UL,CUL  
 Curve tolerance: ISO9906:2012 3B

**Materials:**

Pump: Polyamide / Stainless steel  
 DIN W.-Nr. 1.4301  
 AISI 304  
 Impeller: Polyamide  
 Motor: Stainless steel  
 DIN W.-Nr. 1.4301  
 AISI 304

**Installation:**

Pump outlet: Rp 1 1/4  
 Minimum borehole diameter: 76 mm

**Electrical data:**

Motor type: MSE3  
 Power input - P1: 2.32 kW



Company name:

Created by:

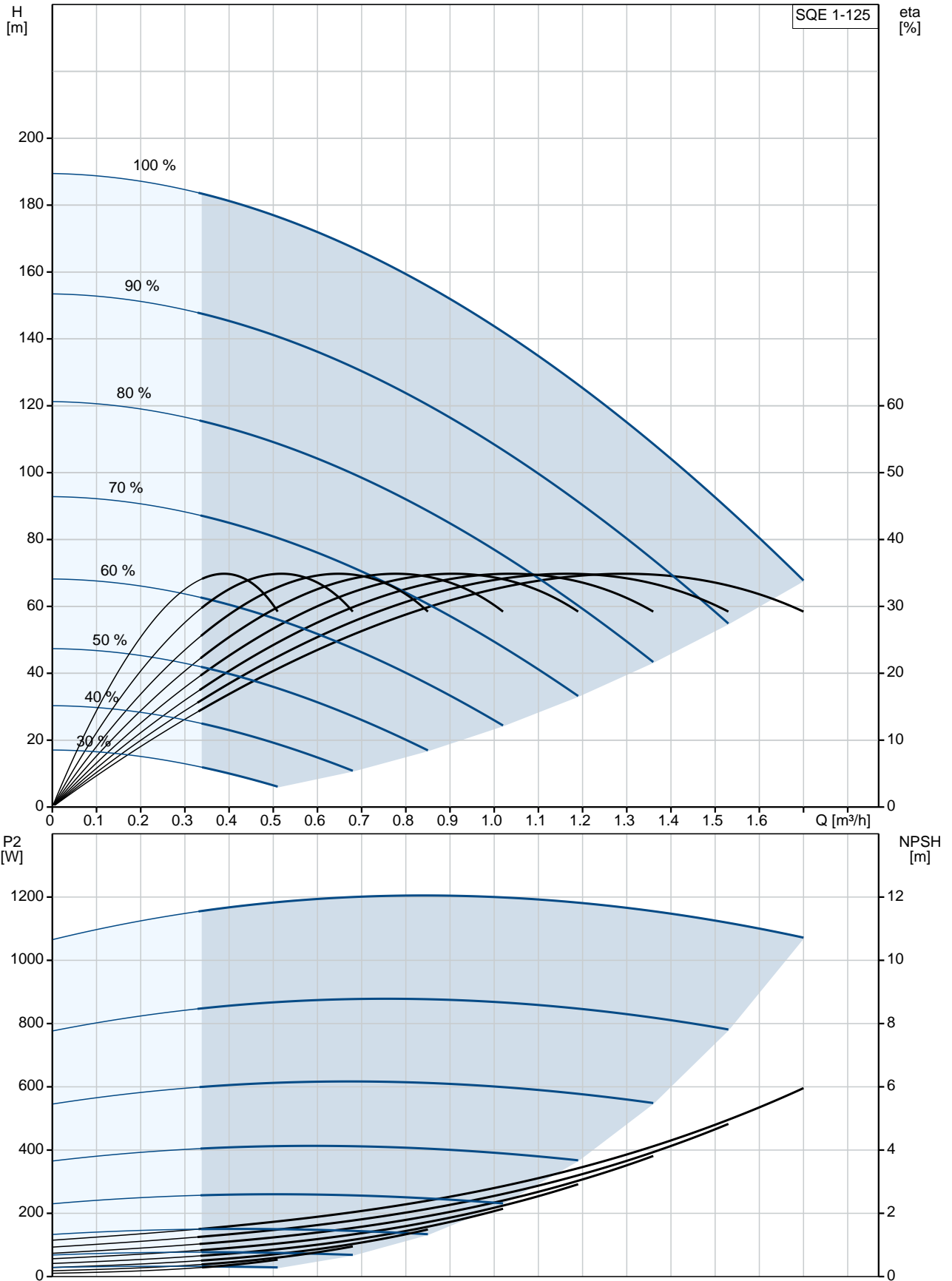
Phone:

Date:

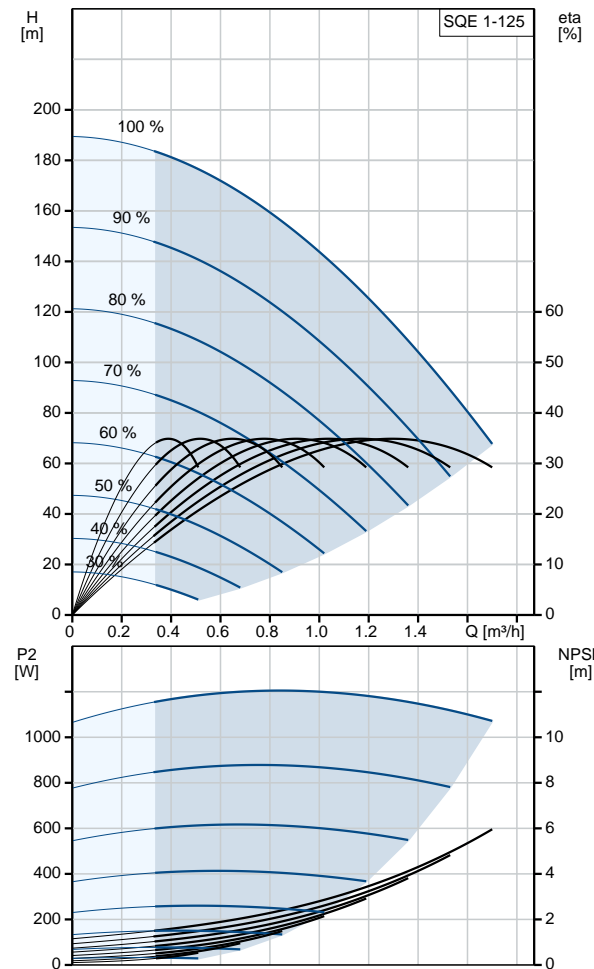
09/04/2019

Qty.	Description
	Rated power - P2: 1.55 kW
	Mains frequency: 50 Hz
	Rated voltage: 1 x 200-240 V
	Rated current: 11.2 A
	Power factor: 1.00
	Rated speed: 10700 rpm
	Start. method: direct-on-line
	Enclosure class (IEC 34-5): IP68
	Insulation class (IEC 85): F
	Length of cable: 1.5 m
	Motor No: 96160856
	<b>Others:</b>
	Net weight: 6.4 kg
	Gross weight: 7.1 kg
	Shipping volume: 0.011 m <sup>3</sup>
	Danish VVS No.: 388441525
	Swedish RSK No.: 5853366
	Country of origin: DE
	Custom tariff no.: 84137029

## 96510146 SQE 1-125 50 Hz



Description	Value
<b>General information:</b>	
Product name:	SQE 1-125
Product No:	96510146
EAN number:	5700396502427
<b>Technical:</b>	
Pump speed on which pump data are based:	10700 rpm
Rated flow:	1 m <sup>3</sup> /h
Rated head:	135 m
Stages:	8
Approvals on motor nameplate:	CE,UL,CUL
Curve tolerance:	ISO9906:2012 3B
Pump No:	96080402
Model:	B
Valve:	pump with built-in non-return valve
<b>Materials:</b>	
Pump:	Polyamide / Stainless steel DIN W.-Nr. 1.4301 AISI 304
Impeller:	Polyamide
Motor:	Stainless steel DIN W.-Nr. 1.4301 AISI 304
<b>Installation:</b>	
Pump outlet:	Rp 1 1/4
Minimum borehole diameter:	76 mm
<b>Liquid:</b>	
Pumped liquid:	Water
Maximum liquid temperature:	35 °C
Max liquid t at 0.15 m/sec:	35 °C
Selected liquid temperature:	20 °C
Density at selected liquid temperature:	998.2 kg/m <sup>3</sup>
<b>Electrical data:</b>	
Motor type:	MSE3
Power input - P1:	2.32 kW
Rated power - P2:	1.55 kW
Mains frequency:	50 Hz
Rated voltage:	1 x 200-240 V
Rated current:	11.2 A
Power factor:	1.00
Rated speed:	10700 rpm
Start. method:	direct-on-line
Enclosure class (IEC 34-5):	IP68
Insulation class (IEC 85):	F
Motor protec:	Y
Thermal protec:	internal
Length of cable:	1.5 m
Motor No:	96160856
<b>Controls:</b>	
CU 300/CU 301:	communication with CU 300/CU 301 possible
<b>Others:</b>	
Net weight:	6.4 kg
Gross weight:	7.1 kg
Shipping volume:	0.011 m <sup>3</sup>
Sales region:	EU/S-AMREG/APREG
Danish VVS No.:	388441525





Company name:

Created by:

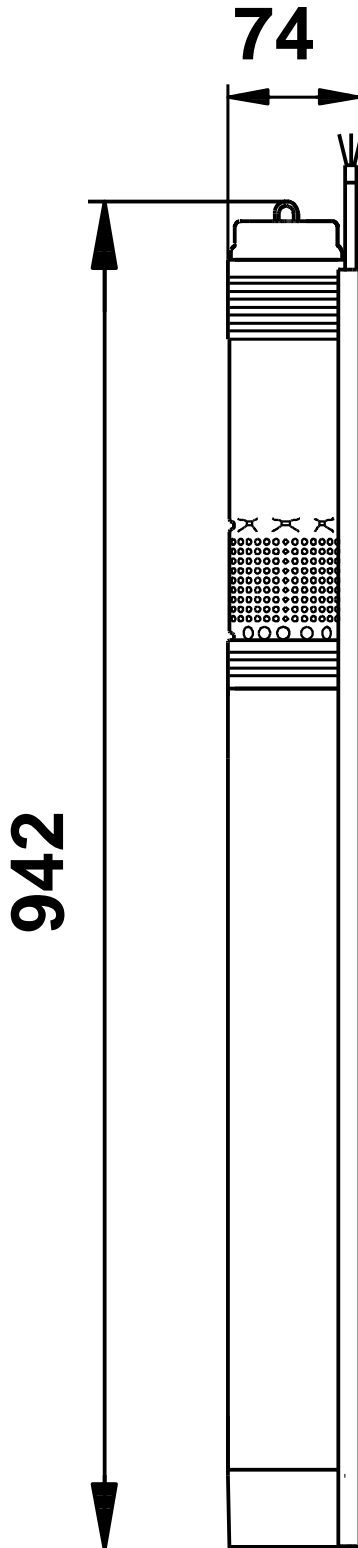
Phone:

Date:

09/04/2019

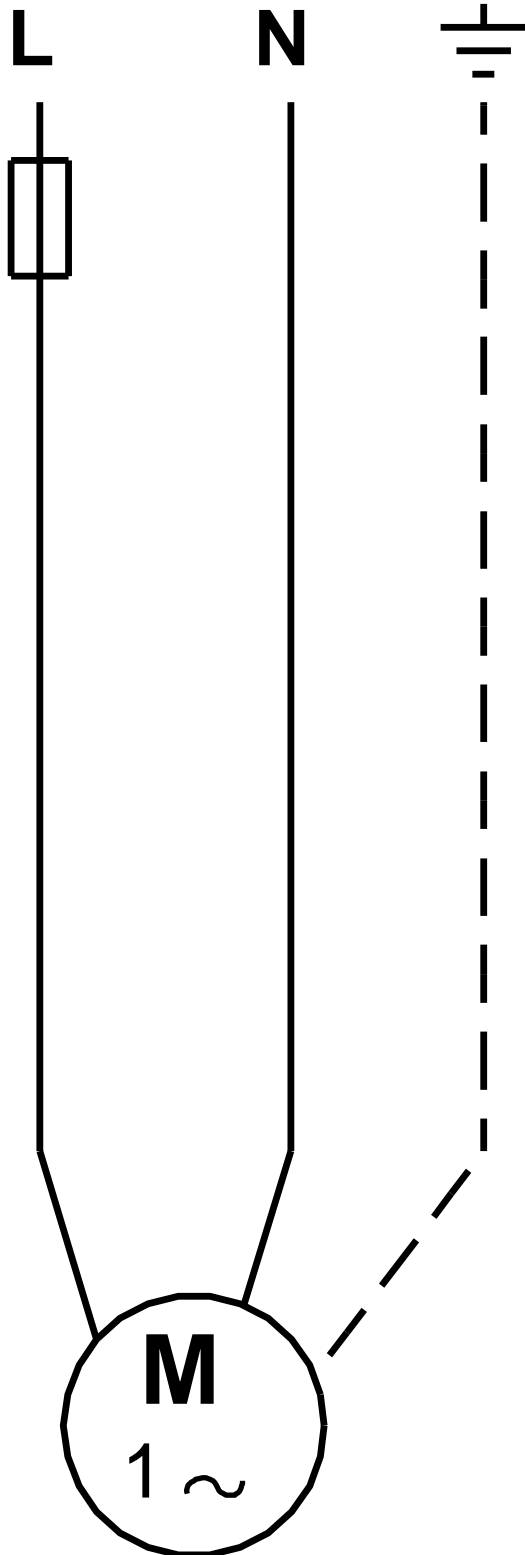
Description	Value
Swedish RSK No.:	5853366
Country of origin:	DE
Custom tariff no.:	84137029

**96510146 SQE 1-125 50 Hz**



Note! All units are in [mm] unless others are stated.  
Disclaimer: This simplified dimensional drawing does not show all details.

**96510146 SQE 1-125 50 Hz**



Note! All units are in [mm] unless others are stated.



Company name:

Created by:

Phone:

Date:

09/04/2019

---

**Order Data:**

Product name: SQE 1-125

Amount: 1

Product No: 96510146

Total: Price on request

---