

Qty. Description

1 **SP 300-6F G**



Note! Product picture may differ from actual product

Product No.: [96430998](#)

Multi-stage submersible pump for raw water supply, groundwater lowering, pressure boosting and various industrial jobs.

The pump is suitable for pumping clean, thin, non-aggressive liquids without solid particles or fibres.

Pump: The pump is made entirely of Cast iron DIN W.-Nr. EN-JL1040 and suitable for horizontal installation.

The pump is fitted with a built-in non-return valve.

Phase: The motor is a 3-phase motor with sand shield, liquid-lubricated bearings and pressure equalizing diaphragm.

Performance test according to ISO9906 2012 Grade 3B is available on request.

Liquid:

Pumped liquid: Water
 Maximum liquid temperature: 40 °C
 Max liquid t at 0.15 m/sec: 25 °C
 Selected liquid temperature: 20 °C
 Density: 998.2 kg/m³

Technical:

Type of impeller: F
 Shaft seal for motor: CER/CARBON
 Curve tolerance: ISO9906:2012 3B
 Motor version: T30

Materials:

Pump: Cast iron
 EN-JL1040
Impeller: Zinc-free bronze
 DIN W.-Nr. 2.1050.01
Motor: Cast iron
 DIN W.-Nr. 0.6025
 ASTM 35-40

Installation:

Flange standard: DIN
 Pump outlet: DN175
 Motor diameter: 12 inch

Electrical data:

Motor type: MMS12000
 Rated power - P2: 190 kW
 Mains frequency: 50 Hz



Company name:

Created by:

Phone:

Date:

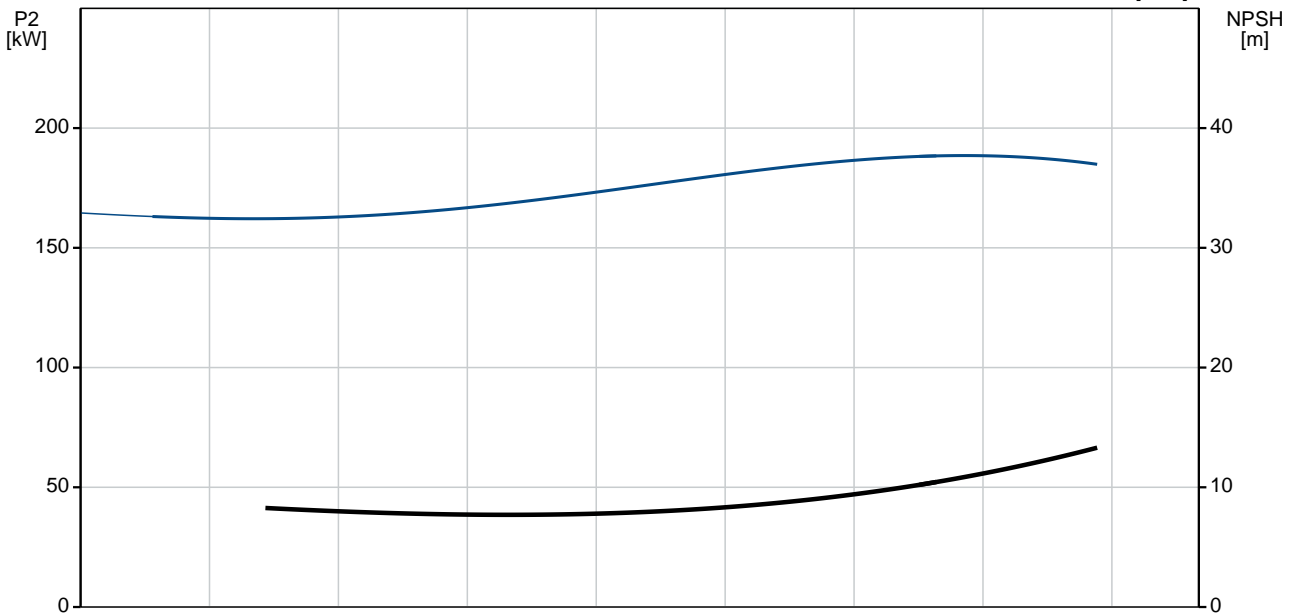
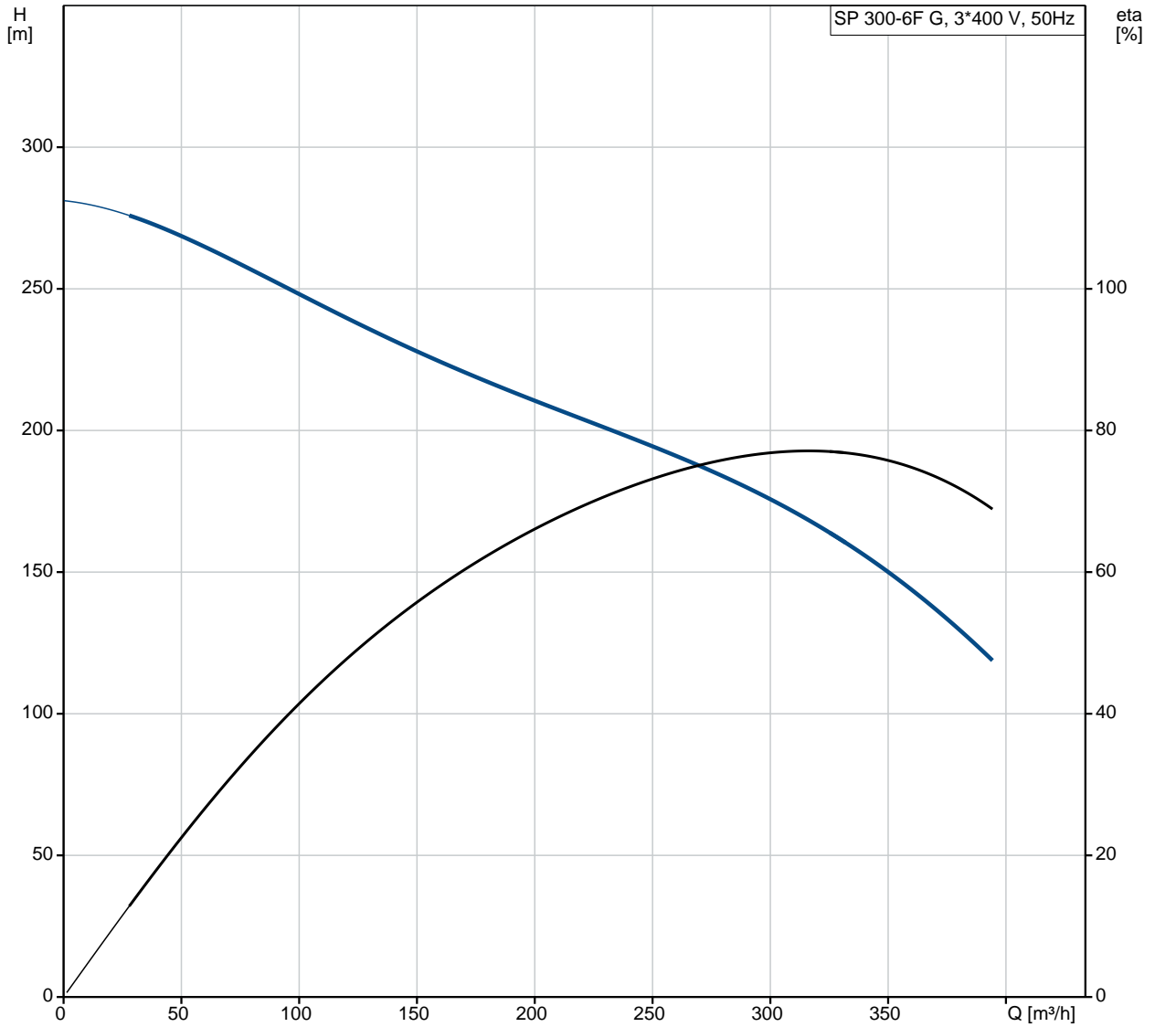
12/11/2020

| Qty. | Description |
|------|-------------|
|------|-------------|

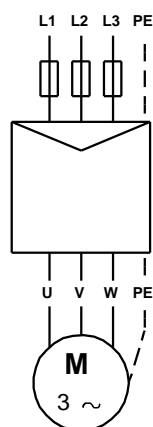
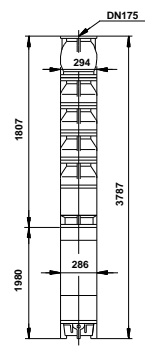
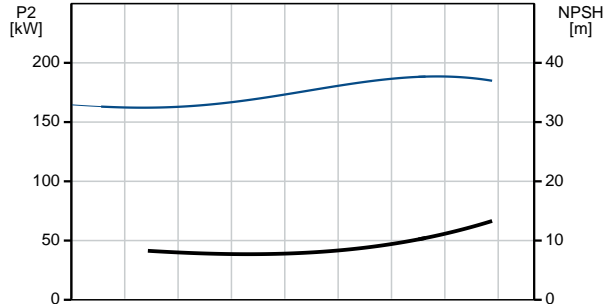
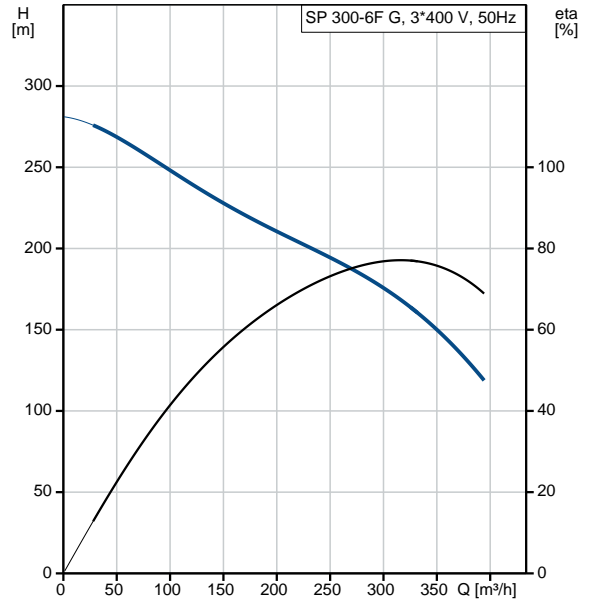
| | |
|-----------------------------|--------------------|
| Rated voltage: | 3 x 380-400-415 V |
| Rated current: | 390-390-395 A |
| Cos phi - power factor: | 0.88-0.84-0.80 |
| Rated speed: | 2920-2930-2930 rpm |
| Start. method: | direct-on-line |
| Enclosure class (IEC 34-5): | IP68 |
| Built-in temp. transmitter: | no |
| Motor No: | 96430684 |
| Windings: | PVC |

| | |
|------------------|----------------------|
| Others: | |
| Net weight: | 935 kg |
| Shipping volume: | 0.846 m ³ |

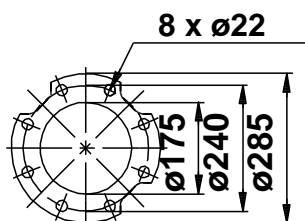
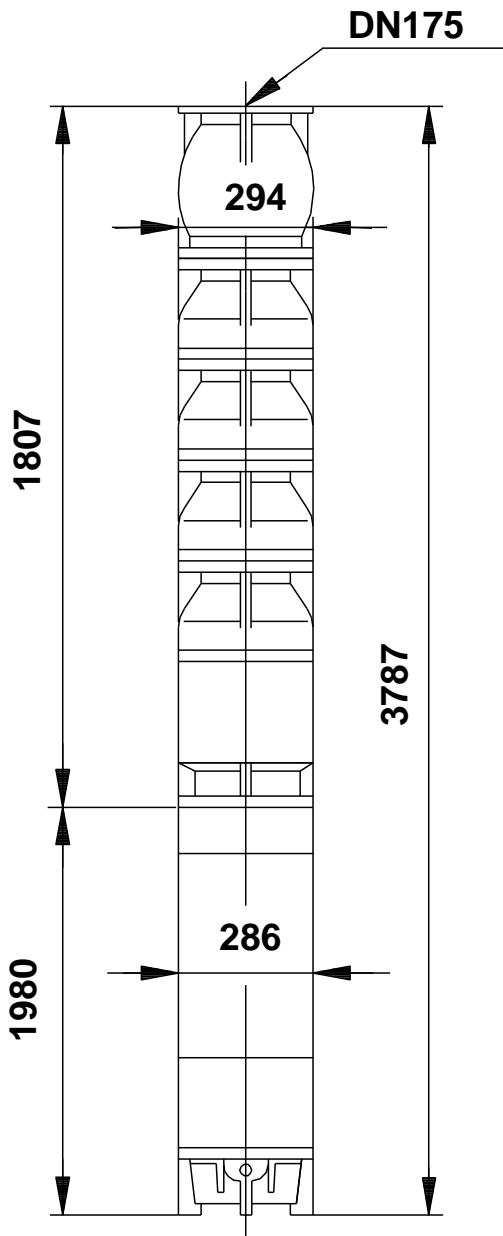
96430998 SP 300-6F G 50 Hz



| Description | Value |
|------------------------------|-------------------------------------|
| General information: | |
| Product name: | SP 300-6F G |
| Product No: | 96430998 |
| EAN number: | 5700393033337 |
| Technical: | |
| Stages: | 6 |
| Type of impeller: | F |
| Shaft seal for motor: | CER/CARBON |
| Curve tolerance: | ISO9906:2012 3B |
| Pump No: | 96430900 |
| Valve: | pump with built-in non-return valve |
| Motor version: | T30 |
| Materials: | |
| Pump: | Cast iron |
| Pump: | EN-JL1040 |
| Impeller: | Zinc-free bronze |
| Impeller: | DIN W.-Nr. 2.1050.01 |
| Motor: | Cast iron |
| Motor: | DIN W.-Nr. 0.6025 |
| Motor: | ASTM 35-40 |
| Installation: | |
| Flange standard: | DIN |
| Pump outlet: | DN175 |
| Motor diameter: | 12 inch |
| Liquid: | |
| Pumped liquid: | Water |
| Maximum liquid temperature: | 40 °C |
| Max liquid t at 0.15 m/sec: | 25 °C |
| Selected liquid temperature: | 20 °C |
| Density: | 998.2 kg/m ³ |
| Electrical data: | |
| Motor type: | MMS12000 |
| Applic. motor: | GRUNDFOS |
| Rated power - P2: | 190 kW |
| Mains frequency: | 50 Hz |
| Rated voltage: | 3 x 380-400-415 V |
| Rated current: | 390-390-395 A |
| Cos phi - power factor: | 0.88-0.84-0.80 |
| Rated speed: | 2920-2930-2930 rpm |
| Start. method: | direct-on-line |
| Enclosure class (IEC 34-5): | IP68 |
| Motor protec: | NONE |
| Thermal protec: | external |
| Built-in temp. transmitter: | no |
| Motor No: | 96430684 |
| Windings: | PVC |
| Others: | |
| Net weight: | 935 kg |
| Shipping volume: | 0.846 m ³ |

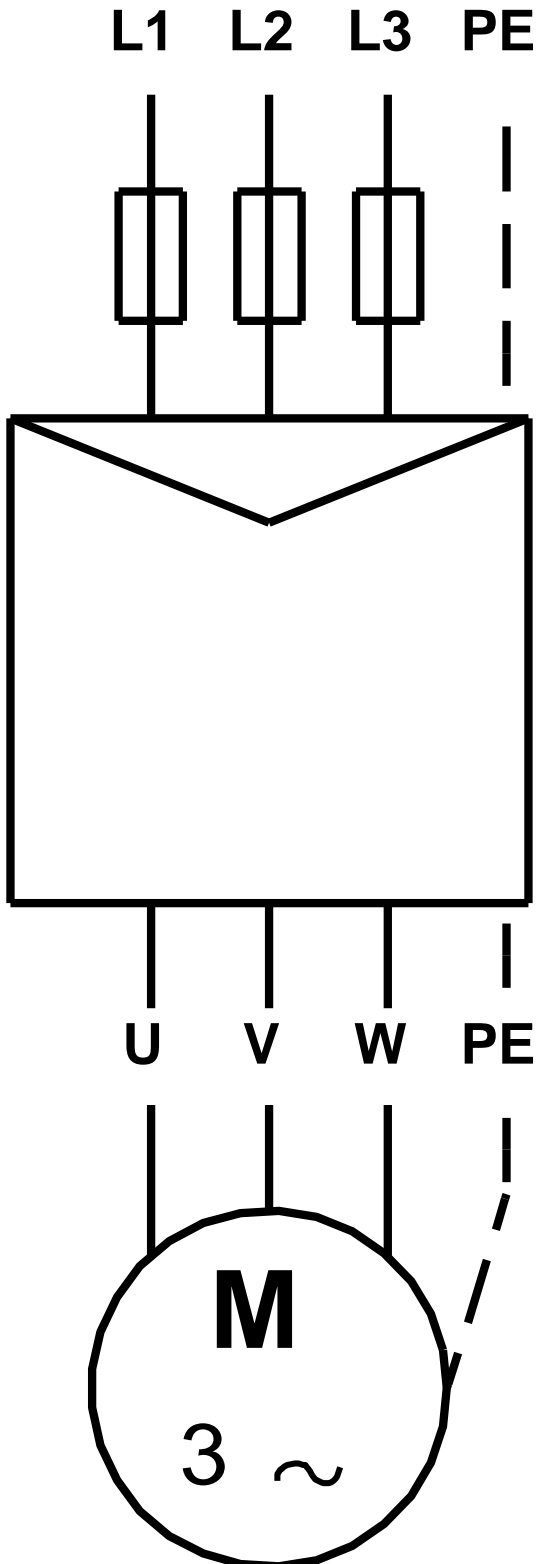


96430998 SP 300-6F G 50 Hz



Note! All units are in [mm] unless others are stated.
Disclaimer: This simplified dimensional drawing does not show all details.

96430998 SP 300-6F G 50 Hz



Note! All units are in [mm] unless others are stated.