


Qty.	Description
1	<p><b>SP 300-3F G</b></p>  <p style="text-align: center;"><b>Note! Product picture may differ from actual product</b></p> <p>Product No.: <a href="#">96430988</a>            Multi-stage submersible pump for raw water supply, groundwater lowering, pressure boosting and various industrial jobs.            The pump is suitable for pumping clean, thin, non-aggressive liquids without solid particles or fibres.</p> <p><b>Pump:</b> The pump is made entirely of Cast iron DIN W.-Nr. EN-JL1040 and suitable for horizontal installation.            The pump is fitted with a built-in non-return valve.</p> <p><b>Phase:</b> The motor is a 3-phase motor with sand shield, liquid-lubricated bearings and pressure equalizing diaphragm.            Performance test according to ISO9906 2012 Grade 3B is available on request.</p> <p><b>Liquid:</b>            Pumped liquid: Water            Maximum liquid temperature: 40 °C            Max liquid t at 0.15 m/sec: 25 °C            Selected liquid temperature: 20 °C            Density: 998.2 kg/m<sup>3</sup></p> <p><b>Technical:</b>            Type of impeller: F            Shaft seal for motor: CER/CARBON            Curve tolerance: ISO9906:2012 3B            Motor version: T30</p> <p><b>Materials:</b>  <b>Pump:</b> Cast iron            EN-JL1040  <b>Impeller:</b> Zinc-free bronze            DIN W.-Nr. 2.1050.01  <b>Motor:</b> Cast iron            DIN W.-Nr. 0.6025            ASTM 35-40</p> <p><b>Installation:</b>            Flange standard: DIN            Pump outlet: DN175            Motor diameter: 8 inch</p> <p><b>Electrical data:</b>            Motor type: MMS8000            Rated power - P2: 92 kW            Mains frequency: 50 Hz</p>



Company name:

Created by:

Phone:

Date:

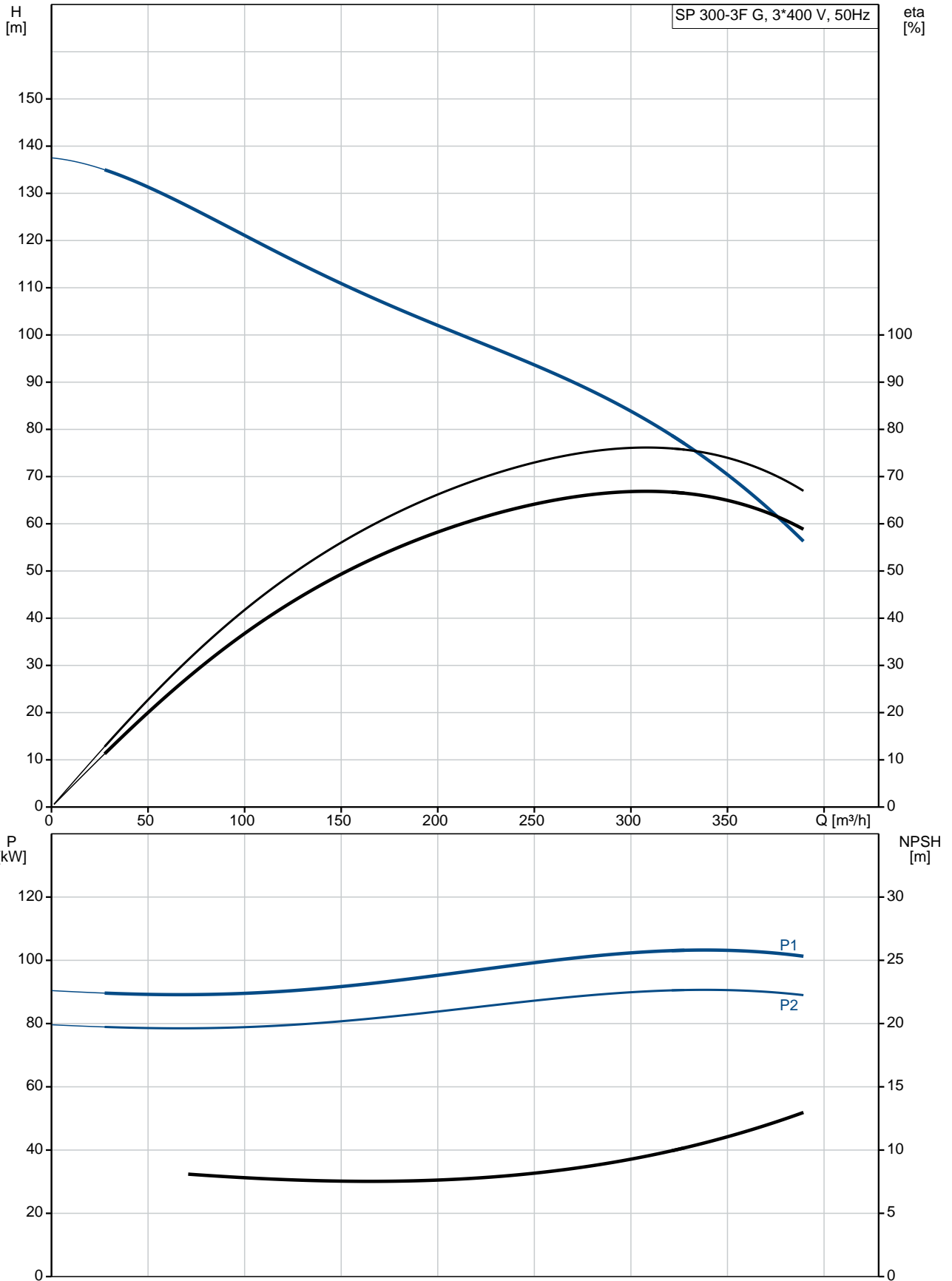
12/11/2020

Qty.	Description
------	-------------

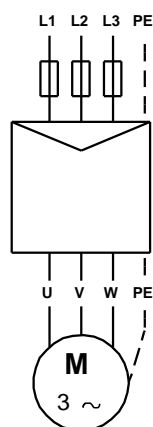
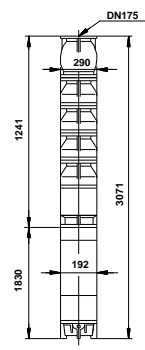
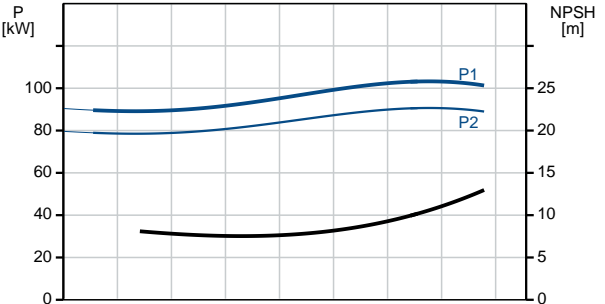
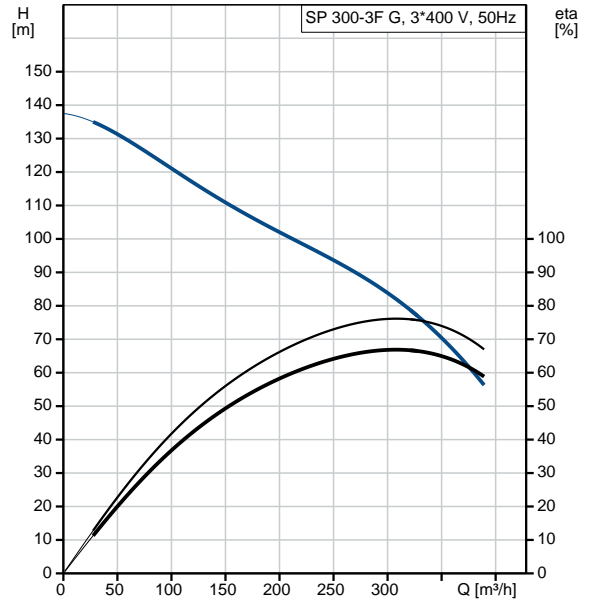
Rated voltage:	3 x 380-400-415 V
Rated current:	194-186-186 A
Cos phi - power factor:	0.88-0.86-0.83
Rated speed:	2870-2890-2890 rpm
Start. method:	direct-on-line
Enclosure class (IEC 34-5):	IP68
Built-in temp. transmitter:	no
Motor No:	96430675
Windings:	PVC

Others:	
Net weight:	473 kg
Shipping volume:	0.692 m <sup>3</sup>
Country of origin:	IT
Custom tariff no.:	84137029

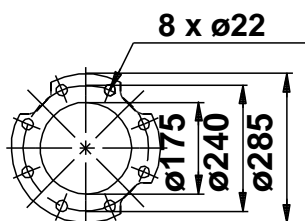
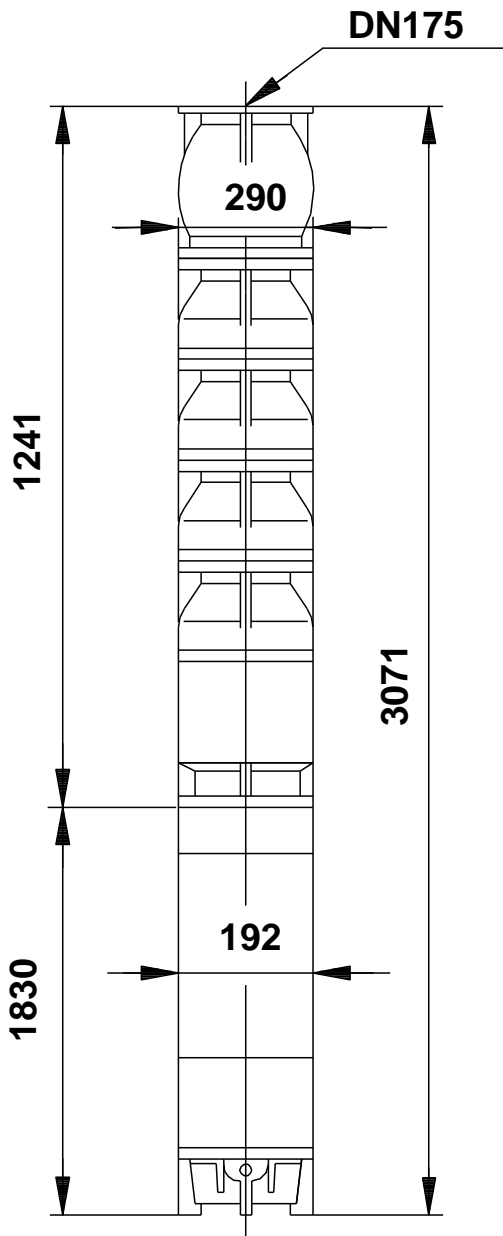
## 96430988 SP 300-3F G 50 Hz



Description	Value
<b>General information:</b>	
Product name:	SP 300-3F G
Product No:	96430988
EAN number:	5700393033238
<b>Technical:</b>	
Stages:	3
Type of impeller:	F
Shaft seal for motor:	CER/CARBON
Curve tolerance:	ISO9906:2012 3B
Pump No:	96430890
Valve:	pump with built-in non-return valve
Motor version:	T30
<b>Materials:</b>	
Pump:	Cast iron
Pump:	EN-JL1040
Impeller:	Zinc-free bronze
Impeller:	DIN W.-Nr. 2.1050.01
Motor:	Cast iron
Motor:	DIN W.-Nr. 0.6025
Motor:	ASTM 35-40
<b>Installation:</b>	
Flange standard:	DIN
Pump outlet:	DN175
Motor diameter:	8 inch
<b>Liquid:</b>	
Pumped liquid:	Water
Maximum liquid temperature:	40 °C
Max liquid t at 0.15 m/sec:	25 °C
Selected liquid temperature:	20 °C
Density:	998.2 kg/m <sup>3</sup>
<b>Electrical data:</b>	
Motor type:	MMS8000
Applic. motor:	GRUNDFOS
Rated power - P2:	92 kW
Mains frequency:	50 Hz
Rated voltage:	3 x 380-400-415 V
Rated current:	194-186-186 A
Cos phi - power factor:	0.88-0.86-0.83
Rated speed:	2870-2890-2890 rpm
Start. method:	direct-on-line
Enclosure class (IEC 34-5):	IP68
Motor protec:	NONE
Thermal protec:	external
Built-in temp. transmitter:	no
Motor No:	96430675
Windings:	PVC
<b>Others:</b>	
Net weight:	473 kg
Shipping volume:	0.692 m <sup>3</sup>
Country of origin:	IT
Custom tariff no.:	84137029

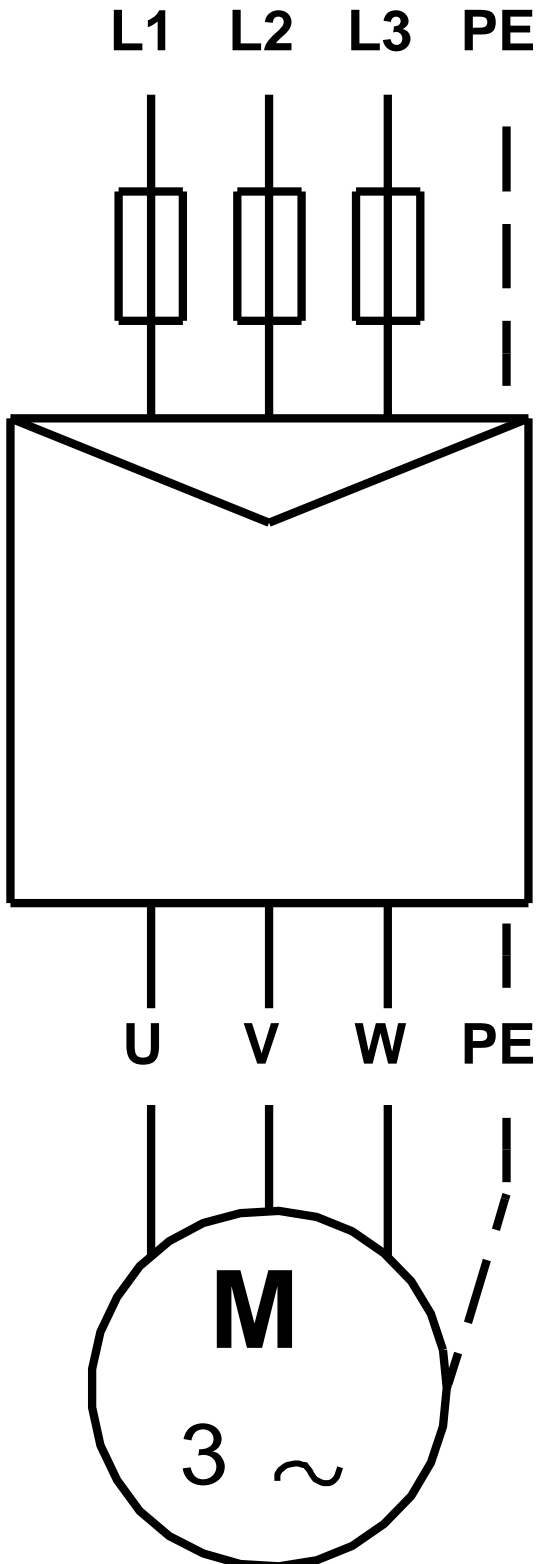


## 96430988 SP 300-3F G 50 Hz



Note! All units are in [mm] unless others are stated.  
Disclaimer: This simplified dimensional drawing does not show all details.

**96430988 SP 300-3F G 50 Hz**



Note! All units are in [mm] unless others are stated.