
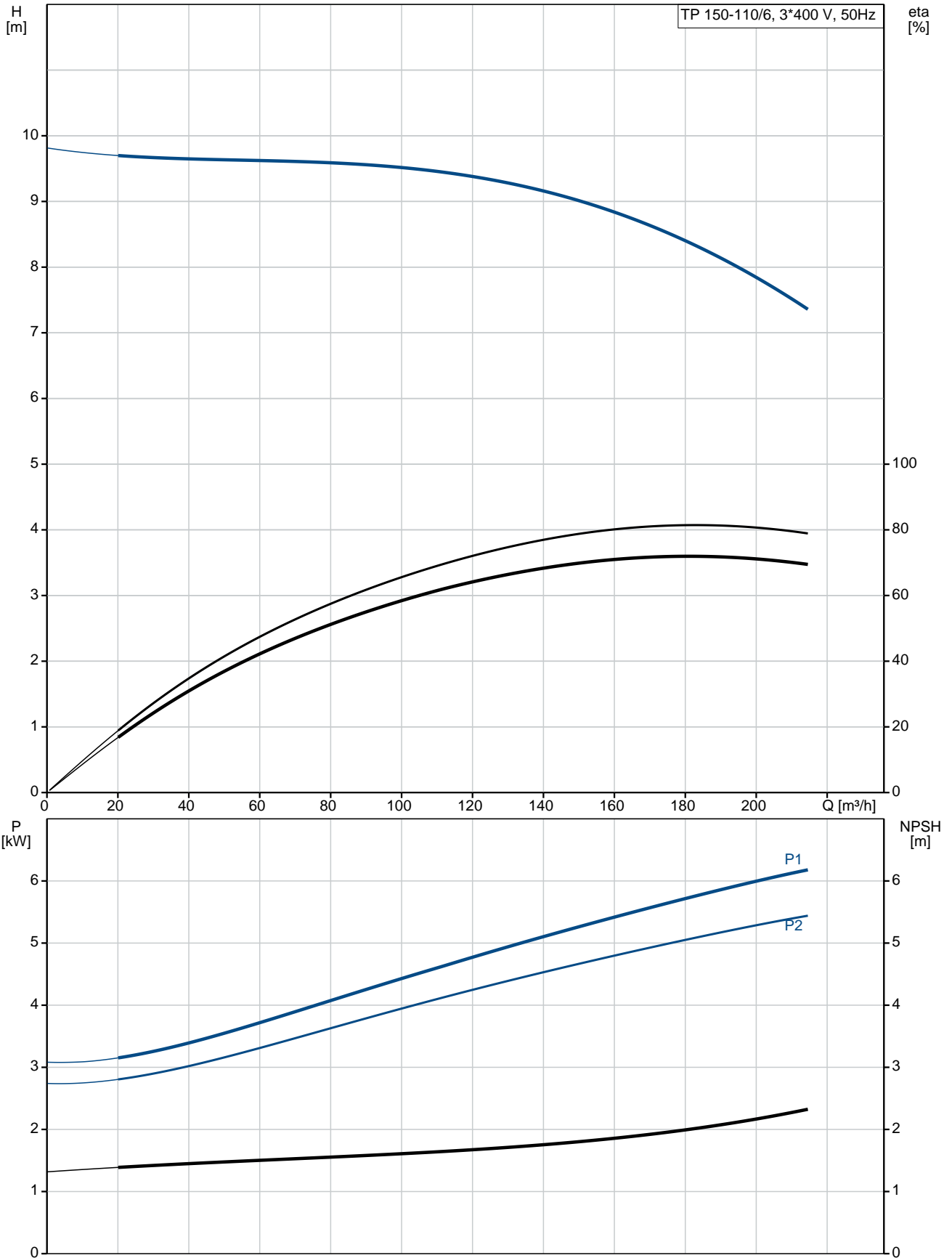


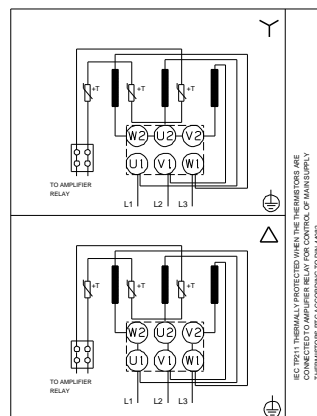
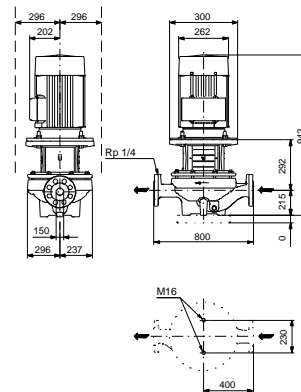
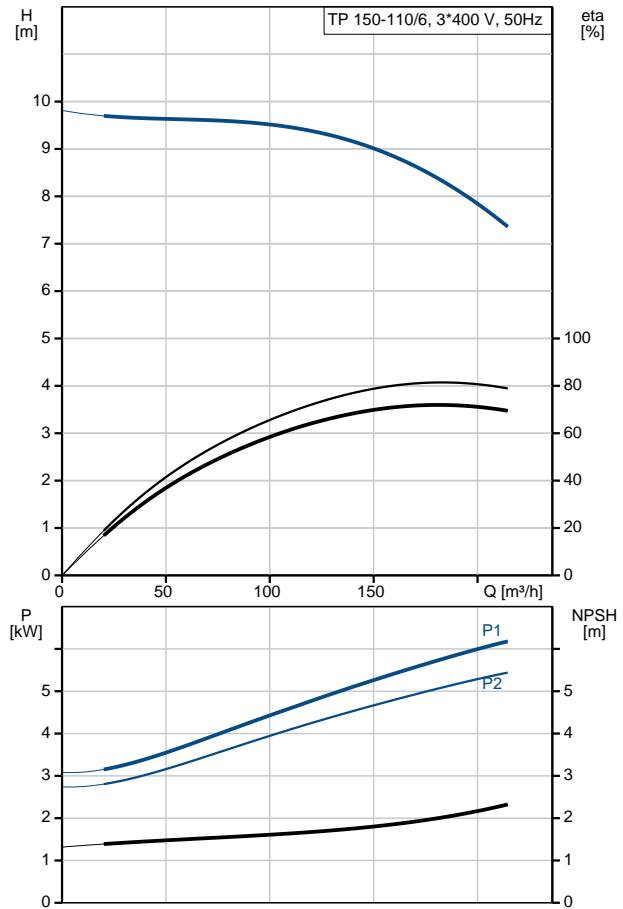
Qty.	Description																																																		
1	<p data-bbox="199 336 566 369"><b>TP 150-110/6 A-F-A-BQQE-LX5</b></p> <div data-bbox="319 403 478 604" style="text-align: center;">  </div> <p data-bbox="199 660 470 683">Product No.: <a href="#">96109996</a></p> <p data-bbox="199 716 1444 795">Single-stage, close-coupled, volute pump with in-line suction and discharge ports of identical diameter. The pump is of the top-pull-out design, i.e. the power head (motor, pump head and impeller) can be removed for maintenance or service while the pump housing remains in the pipework.</p> <p data-bbox="199 806 1412 862">The pump is fitted with an unbalanced rubber bellows seal. The shaft seal is according to EN 12756. Pipework connection is via PN 16 DIN flanges (EN 1092-2 and ISO 7005-2).</p> <p data-bbox="199 862 1037 891">Pipework connection is via PN 16 DIN flanges (EN 1092-2 and ISO 7005-2).</p> <p data-bbox="199 891 837 920">The pump is fitted with a fan-cooled asynchronous motor.</p> <p data-bbox="199 974 295 1003"><b>Liquid:</b></p> <table data-bbox="199 1008 710 1131"> <tr> <td>Pumped liquid:</td> <td>Water</td> </tr> <tr> <td>Liquid temperature range:</td> <td>-25 .. 120 °C</td> </tr> <tr> <td>Selected liquid temperature:</td> <td>20 °C</td> </tr> <tr> <td>Density:</td> <td>998.2 kg/m<sup>3</sup></td> </tr> </table> <p data-bbox="199 1153 327 1182"><b>Technical:</b></p> <table data-bbox="199 1187 805 1366"> <tr> <td>Pump speed on which pump data are based:</td> <td>970 rpm</td> </tr> <tr> <td>Rated flow:</td> <td>184 m<sup>3</sup>/h</td> </tr> <tr> <td>Rated head:</td> <td>8.27 m</td> </tr> <tr> <td>Actual impeller diameter:</td> <td>259 mm</td> </tr> <tr> <td>Primary shaft seal:</td> <td>BQQE</td> </tr> <tr> <td>Curve tolerance:</td> <td>ISO9906:2012 3B2</td> </tr> </table> <p data-bbox="199 1388 327 1417"><b>Materials:</b></p> <table data-bbox="199 1422 750 1601"> <tr> <td>Pump housing:</td> <td>Cast iron EN-JL1040 ASTM A48-40 B</td> </tr> <tr> <td>Impeller:</td> <td>Cast iron EN-JL1030 ASTM A48-30 B</td> </tr> </table> <p data-bbox="199 1624 343 1653"><b>Installation:</b></p> <table data-bbox="199 1657 694 1937"> <tr> <td>Range of ambient temperature:</td> <td>-20 .. 55 °C</td> </tr> <tr> <td>Maximum operating pressure:</td> <td>16 bar</td> </tr> <tr> <td>Flange standard:</td> <td>DIN</td> </tr> <tr> <td>Pipe connection:</td> <td>DN 150</td> </tr> <tr> <td>Pump inlet:</td> <td>DN 150</td> </tr> <tr> <td>Pump outlet:</td> <td>DN 150</td> </tr> <tr> <td>Pressure rating:</td> <td>PN 16</td> </tr> <tr> <td>Port-to-port length:</td> <td>800 mm</td> </tr> <tr> <td>Flange size for motor:</td> <td>FF265</td> </tr> </table> <p data-bbox="199 1960 383 1989"><b>Electrical data:</b></p> <table data-bbox="199 1993 678 2107"> <tr> <td>Motor type:</td> <td>SIEMENS</td> </tr> <tr> <td>IE Efficiency class:</td> <td>IE3</td> </tr> <tr> <td>Rated power - P2:</td> <td>5.5 kW</td> </tr> <tr> <td>Power (P2) required by pump:</td> <td>5.5 kW</td> </tr> </table>	Pumped liquid:	Water	Liquid temperature range:	-25 .. 120 °C	Selected liquid temperature:	20 °C	Density:	998.2 kg/m <sup>3</sup>	Pump speed on which pump data are based:	970 rpm	Rated flow:	184 m <sup>3</sup> /h	Rated head:	8.27 m	Actual impeller diameter:	259 mm	Primary shaft seal:	BQQE	Curve tolerance:	ISO9906:2012 3B2	Pump housing:	Cast iron EN-JL1040 ASTM A48-40 B	Impeller:	Cast iron EN-JL1030 ASTM A48-30 B	Range of ambient temperature:	-20 .. 55 °C	Maximum operating pressure:	16 bar	Flange standard:	DIN	Pipe connection:	DN 150	Pump inlet:	DN 150	Pump outlet:	DN 150	Pressure rating:	PN 16	Port-to-port length:	800 mm	Flange size for motor:	FF265	Motor type:	SIEMENS	IE Efficiency class:	IE3	Rated power - P2:	5.5 kW	Power (P2) required by pump:	5.5 kW
Pumped liquid:	Water																																																		
Liquid temperature range:	-25 .. 120 °C																																																		
Selected liquid temperature:	20 °C																																																		
Density:	998.2 kg/m <sup>3</sup>																																																		
Pump speed on which pump data are based:	970 rpm																																																		
Rated flow:	184 m <sup>3</sup> /h																																																		
Rated head:	8.27 m																																																		
Actual impeller diameter:	259 mm																																																		
Primary shaft seal:	BQQE																																																		
Curve tolerance:	ISO9906:2012 3B2																																																		
Pump housing:	Cast iron EN-JL1040 ASTM A48-40 B																																																		
Impeller:	Cast iron EN-JL1030 ASTM A48-30 B																																																		
Range of ambient temperature:	-20 .. 55 °C																																																		
Maximum operating pressure:	16 bar																																																		
Flange standard:	DIN																																																		
Pipe connection:	DN 150																																																		
Pump inlet:	DN 150																																																		
Pump outlet:	DN 150																																																		
Pressure rating:	PN 16																																																		
Port-to-port length:	800 mm																																																		
Flange size for motor:	FF265																																																		
Motor type:	SIEMENS																																																		
IE Efficiency class:	IE3																																																		
Rated power - P2:	5.5 kW																																																		
Power (P2) required by pump:	5.5 kW																																																		

Qty.	Description
	Mains frequency: 50 Hz Rated voltage: 3 x 380-420D/660-725Y V Rated current: 12,2-11,0/7,00-6,40 A Starting current: 660-660 % Cos phi - power factor: 0.8 Rated speed: 970 rpm Efficiency: IE3 88,0% Motor efficiency at full load: 88.0-88.0 % Motor efficiency at 3/4 load: 89.1-89.1 % Motor efficiency at 1/2 load: 89.0-89.0 % Number of poles: 6 Enclosure class (IEC 34-5): 55 Dust/Jetting Insulation class (IEC 85): F Motor No: 83W15217
	<b>Others:</b> Minimum efficiency index, MEI $\eta_{min}$ : 0.62 ErP status: EuP Standalone/Prod. Net weight: 269 kg Gross weight: 302 kg Shipping volume: 0.75 m <sup>3</sup> Danish VVS No.: 381728110 Finnish LVI No.: 4616151 Country of origin: HU Custom tariff no.: 84137051

## 96109996 TP 150-110/6 A-F-A-BQQE-LX5 50 Hz



Description	Value
<b>General information:</b>	
Product name:	TP 150-110/6 A-F-A-BQQE-LX5
Product No:	96109996
EAN number:	5700396989815
Price:	5.330,00 GBP
<b>Technical:</b>	
Pump speed on which pump data are based:	970 rpm
Rated flow:	184 m <sup>3</sup> /h
Rated head:	8.27 m
Head max:	110 dm
Actual impeller diameter:	259 mm
Primary shaft seal:	BQQE
Curve tolerance:	ISO9906:2012 3B2
Pump version:	A
Model:	A
<b>Materials:</b>	
Pump housing:	Cast iron EN-JL1040 ASTM A48-40 B
Impeller:	Cast iron EN-JL1030 ASTM A48-30 B
Material code:	A
<b>Installation:</b>	
Range of ambient temperature:	-20 .. 55 °C
Maximum operating pressure:	16 bar
Flange standard:	DIN
Pipe connection:	DN 150
Pump inlet:	DN 150
Pump outlet:	DN 150
Pressure rating:	PN 16
Port-to-port length:	800 mm
Flange size for motor:	FF265
Connect code:	F
<b>Liquid:</b>	
Pumped liquid:	Water
Liquid temperature range:	-25 .. 120 °C
Selected liquid temperature:	20 °C
Density:	998.2 kg/m <sup>3</sup>
<b>Electrical data:</b>	
Motor type:	SIEMENS
IE Efficiency class:	IE3
Rated power - P2:	5.5 kW
Power (P2) required by pump:	5.5 kW
Mains frequency:	50 Hz
Rated voltage:	3 x 380-420D/660-725Y V
Rated current:	12,2-11,0/7,00-6,40 A
Starting current:	660-660 %
Cos phi - power factor:	0.8
Rated speed:	970 rpm
Efficiency:	IE3 88,0%
Motor efficiency at full load:	88.0-88.0 %
Motor efficiency at 3/4 load:	89.1-89.1 %
Motor efficiency at 1/2 load:	89.0-89.0 %
Number of poles:	6
Enclosure class (IEC 34-5):	55 Dust/Jetting





Company name:

Created by:

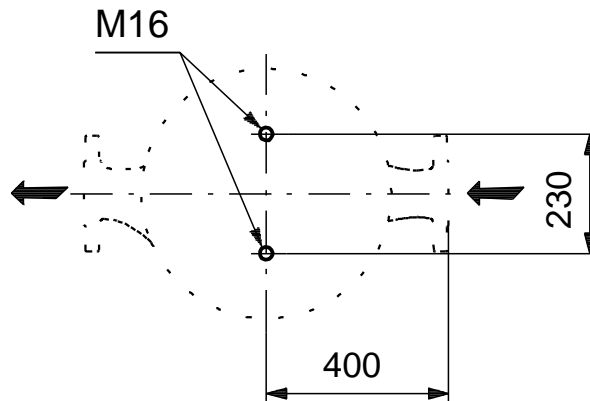
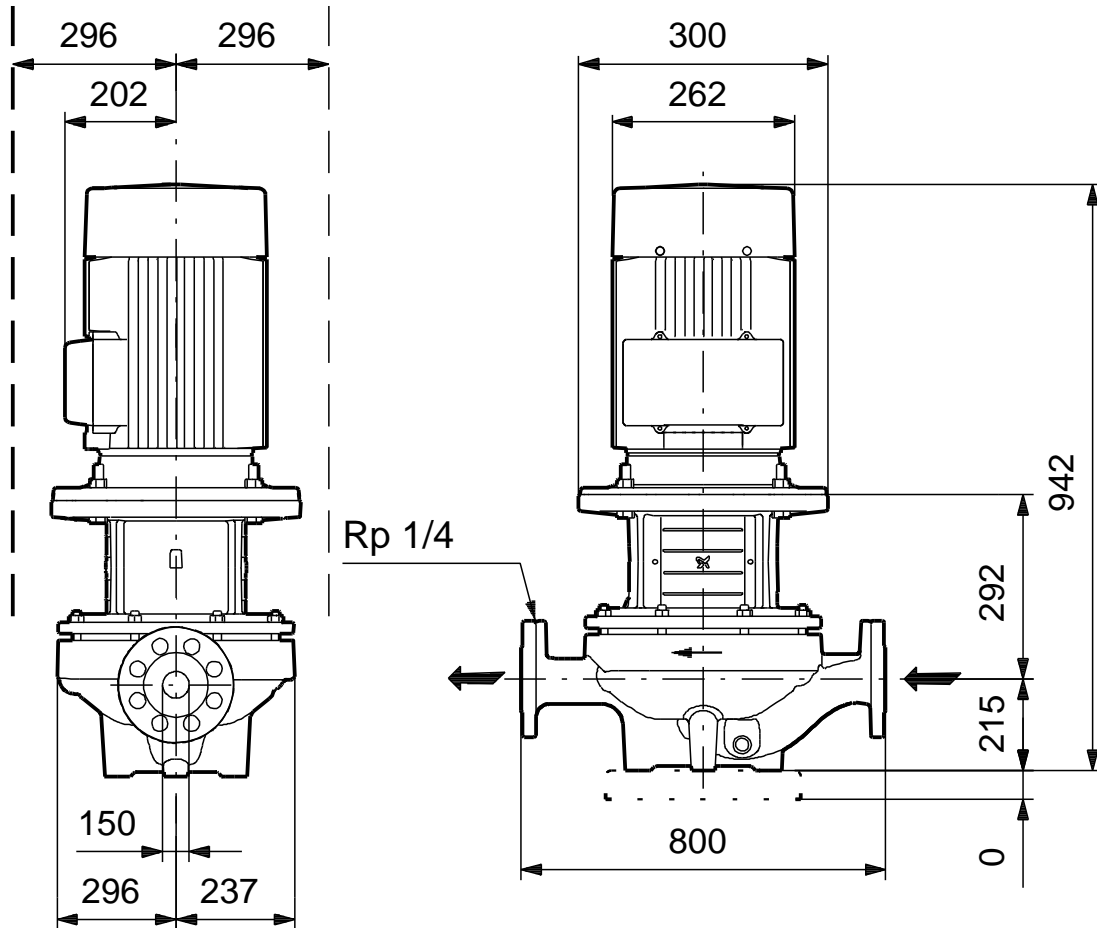
Phone:

Date:

10/03/2020

Description	Value
Insulation class (IEC 85):	F
Motor protec:	PTC
Motor No:	83W15217
<b>Others:</b>	
Minimum efficiency index, MEI %:	0.62
ErP status:	EuP Standalone/Prod.
Net weight:	269 kg
Gross weight:	302 kg
Shipping volume:	0.75 m <sup>3</sup>
Danish VVS No.:	381728110
Finnish LVI No.:	4616151
Country of origin:	HU
Custom tariff no.:	84137051

## 96109996 TP 150-110/6 A-F-A-BQQE-LX5 50 Hz



Note! All units are in [mm] unless others are stated.  
Disclaimer: This simplified dimensional drawing does not show all details.