

**Qty. Description**

1 TP 125-70/6 A-F-A-BQQE-IX5

Product No.: [96109648](#)

Single-stage, close-coupled, volute pump with in-line suction and discharge ports of identical diameter. The pump is of the top-pull-out design, i.e. the power head (motor, pump head and impeller) can be removed for maintenance or service while the pump housing remains in the pipework.

The pump is fitted with an unbalanced rubber bellows seal. The shaft seal is according to EN 12756. Pipework connection is via PN 16 DIN flanges (EN 1092-2 and ISO 7005-2).

Pipework connection is via PN 16 DIN flanges (EN 1092-2 and ISO 7005-2).

The pump is fitted with a fan-cooled asynchronous motor.

**Liquid:**

Pumped liquid: Water  
Liquid temperature range: -25 .. 120 °C  
Selected liquid temperature: 20 °C  
Density: 998.2 kg/m<sup>3</sup>

**Technical:**

Pump speed on which pump data are based: 970 rpm  
Rated flow: 112 m<sup>3</sup>/h  
Rated head: 5.7 m  
Actual impeller diameter: 216 mm  
Primary shaft seal: BQQE  
Curve tolerance: ISO9906:2012 3B2

**Materials:**

Pump housing: Cast iron  
EN-JL1040  
ASTM A48-40 B  
Impeller: Cast iron  
EN-JL1030  
ASTM A48-30 B

**Installation:**

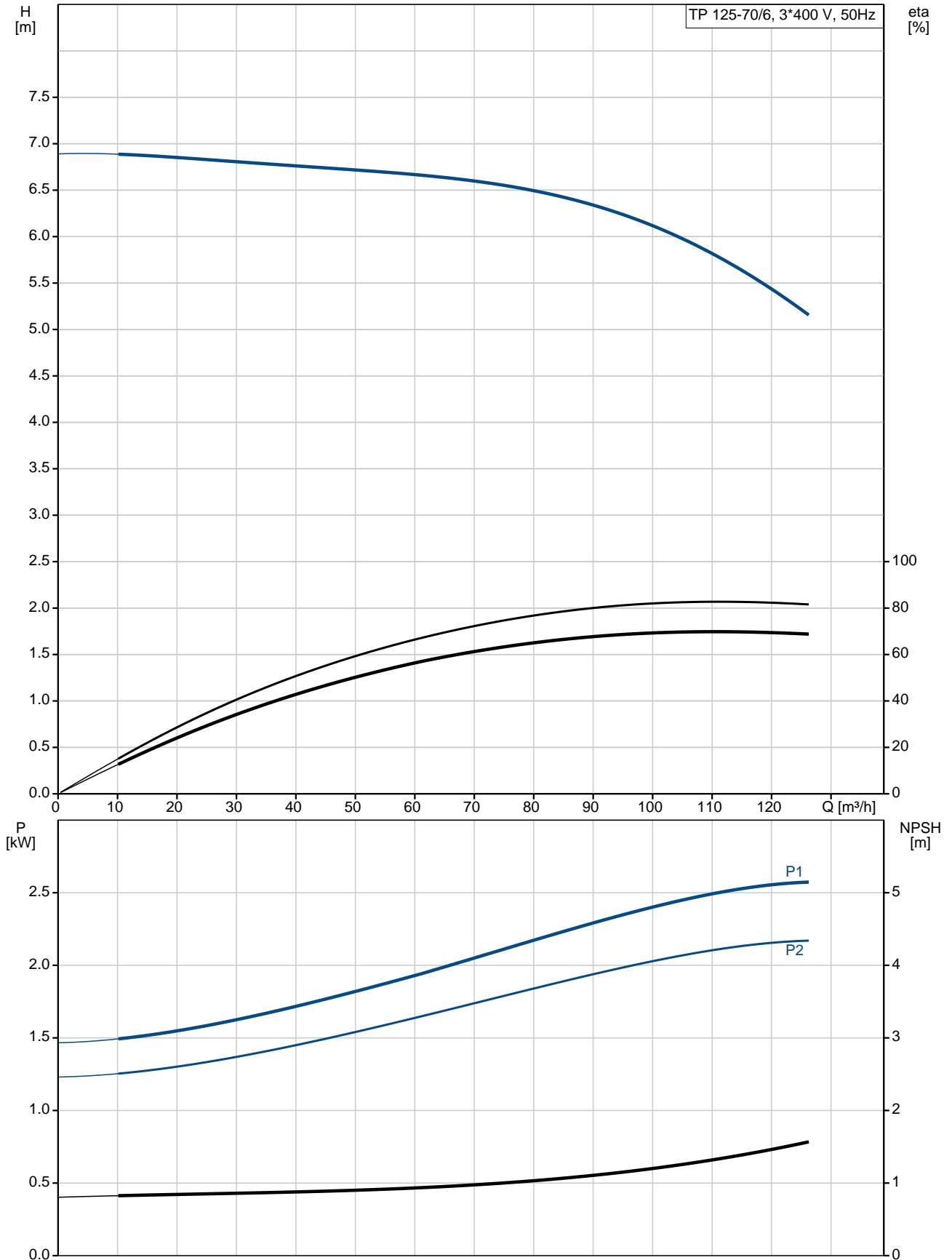
Range of ambient temperature: -20 .. 55 °C  
Maximum operating pressure: 16 bar  
Flange standard: DIN  
Pipe connection: DN 125  
Pump inlet: DN 125  
Pump outlet: DN 125  
Pressure rating: PN 16  
Port-to-port length: 620 mm  
Flange size for motor: FF215

**Electrical data:**

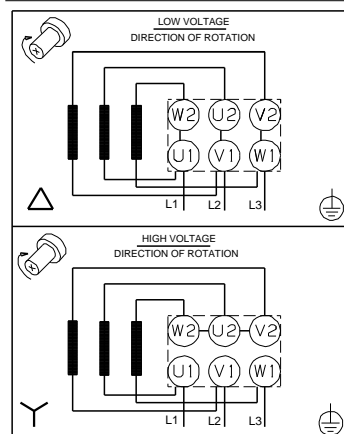
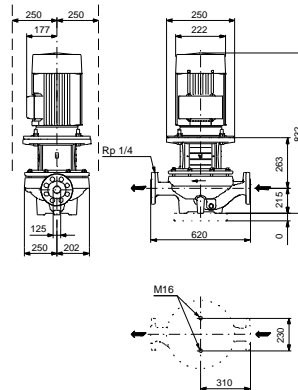
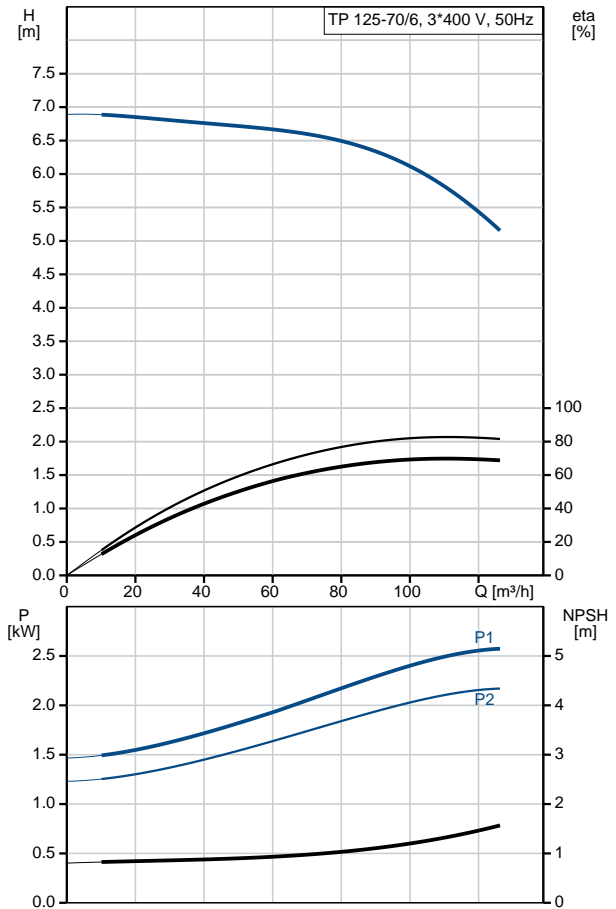
Motor type: SIEMENS  
IE Efficiency class: IE3  
Rated power - P2: 2.2 kW  
Power (P2) required by pump: 2.2 kW

Qty.	Description
	Mains frequency: 50 Hz Rated voltage: 3 x 220-240D/380-420Y V Rated current: 9,15-8,30/5,30-4,80 A Starting current: 680-680 % Cos phi - power factor: 0.8 Rated speed: 970 rpm Efficiency: IE3 84,3% Motor efficiency at full load: 84.3-84.3 % Motor efficiency at 3/4 load: 84.9-84.9 % Motor efficiency at 1/2 load: 83.6-83.6 % Number of poles: 6 Enclosure class (IEC 34-5): 55 Dust/Jetting Insulation class (IEC 85): F Motor No: 83W02208
	<b>Others:</b> Minimum efficiency index, MEI $\eta_{min}$ : 0.62 ErP status: EuP Standalone/Prod. Net weight: 170 kg Gross weight: 203 kg Shipping volume: 0.75 m <sup>3</sup> Danish VVS No.: 381727070 Country of origin: HU Custom tariff no.: 84137051

## 96109648 TP 125-70/6 A-F-A-BQQE-IX5 50 Hz



Description	Value
<b>General information:</b>	
Product name:	TP 125-70/6 A-F-A-BQQE-IX5
Product No:	96109648
EAN number:	5700396986326
Price:	5700396986326
Price:	3.427,00 GBP
<b>Technical:</b>	
Pump speed on which pump data are based:	970 rpm
Rated flow:	112 m <sup>3</sup> /h
Rated head:	5.7 m
Head max:	70 dm
Actual impeller diameter:	216 mm
Primary shaft seal:	BQQE
Curve tolerance:	ISO9906:2012 3B2
Pump version:	A
Model:	A
<b>Materials:</b>	
Pump housing:	Cast iron EN-JL1040 ASTM A48-40 B
Impeller:	Cast iron EN-JL1030 ASTM A48-30 B
Material code:	A
<b>Installation:</b>	
Range of ambient temperature:	-20 .. 55 °C
Maximum operating pressure:	16 bar
Flange standard:	DIN
Pipe connection:	DN 125
Pump inlet:	DN 125
Pump outlet:	DN 125
Pressure rating:	PN 16
Port-to-port length:	620 mm
Flange size for motor:	FF215
Connect code:	F
<b>Liquid:</b>	
Pumped liquid:	Water
Liquid temperature range:	-25 .. 120 °C
Selected liquid temperature:	20 °C
Density:	998.2 kg/m <sup>3</sup>
<b>Electrical data:</b>	
Motor type:	SIEMENS
IE Efficiency class:	IE3
Rated power - P2:	2.2 kW
Power (P2) required by pump:	2.2 kW
Mains frequency:	50 Hz
Rated voltage:	3 x 220-240D/380-420Y V
Rated current:	9,15-8,30/5,30-4,80 A
Starting current:	680-680 %
Cos phi - power factor:	0.8
Rated speed:	970 rpm
Efficiency:	IE3 84,3%
Motor efficiency at full load:	84.3-84.3 %
Motor efficiency at 3/4 load:	84.9-84.9 %
Motor efficiency at 1/2 load:	83.6-83.6 %
Number of poles:	6





Company name:

Created by:

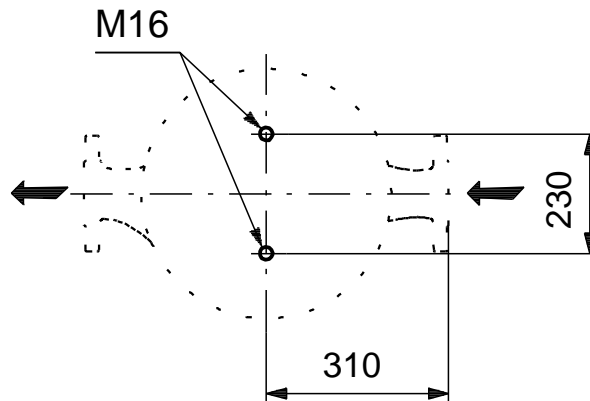
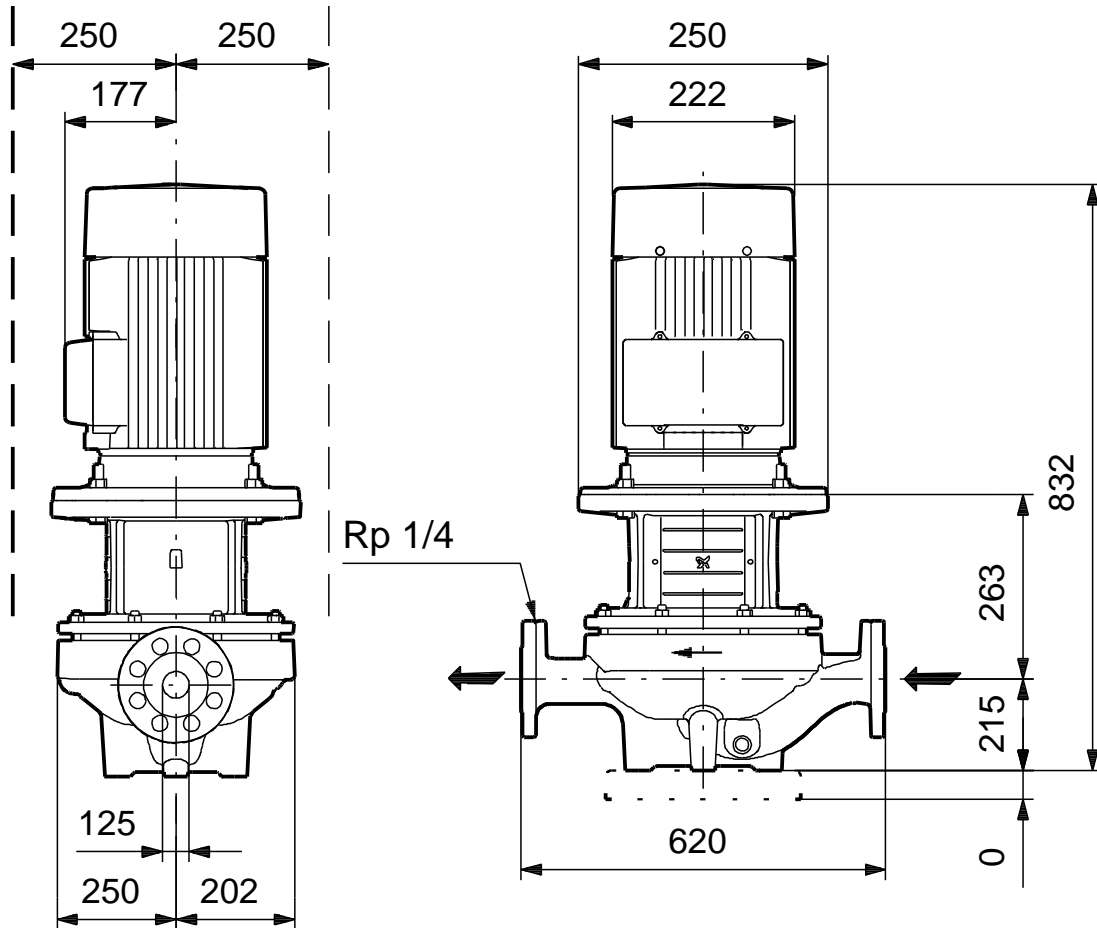
Phone:

Date:

10/03/2020

Description	Value
Enclosure class (IEC 34-5):	55 Dust/Jetting
Insulation class (IEC 85):	F
Motor protec:	NONE
Motor No:	83W02208
<b>Others:</b>	
Minimum efficiency index, MEI %:	0.62
ErP status:	EuP Standalone/Prod.
Net weight:	170 kg
Gross weight:	203 kg
Shipping volume:	0.75 m <sup>3</sup>
Danish VVS No.:	381727070
Country of origin:	HU
Custom tariff no.:	84137051

## 96109648 TP 125-70/6 A-F-A-BQQE-IX5 50 Hz



Note! All units are in [mm] unless others are stated.  
Disclaimer: This simplified dimensional drawing does not show all details.