


Qty.	Description																																																		
1	<p data-bbox="199 340 550 362">TP 125-60/6 A-F-A-BQQE-HX5</p> <div data-bbox="327 407 470 609" style="text-align: center;">  </div> <p data-bbox="199 660 470 683">Product No.: 96109647</p> <p data-bbox="199 721 1444 795">Single-stage, close-coupled, volute pump with in-line suction and discharge ports of identical diameter. The pump is of the top-pull-out design, i.e. the power head (motor, pump head and impeller) can be removed for maintenance or service while the pump housing remains in the pipework.</p> <p data-bbox="199 806 1412 862">The pump is fitted with an unbalanced rubber bellows seal. The shaft seal is according to EN 12756. Pipework connection is via PN 16 DIN flanges (EN 1092-2 and ISO 7005-2).</p> <p data-bbox="199 869 1037 891">Pipework connection is via PN 16 DIN flanges (EN 1092-2 and ISO 7005-2).</p> <p data-bbox="199 898 829 920">The pump is fitted with a fan-cooled asynchronous motor.</p> <p data-bbox="199 981 287 1003">Liquid:</p> <table data-bbox="199 1012 710 1131"> <tr> <td>Pumped liquid:</td> <td>Water</td> </tr> <tr> <td>Liquid temperature range:</td> <td>-25 .. 120 °C</td> </tr> <tr> <td>Selected liquid temperature:</td> <td>20 °C</td> </tr> <tr> <td>Density:</td> <td>998.2 kg/m³</td> </tr> </table> <p data-bbox="199 1160 327 1182">Technical:</p> <table data-bbox="199 1191 805 1366"> <tr> <td>Pump speed on which pump data are based:</td> <td>970 rpm</td> </tr> <tr> <td>Rated flow:</td> <td>90 m³/h</td> </tr> <tr> <td>Rated head:</td> <td>4.34 m</td> </tr> <tr> <td>Actual impeller diameter:</td> <td>192 mm</td> </tr> <tr> <td>Primary shaft seal:</td> <td>BQQE</td> </tr> <tr> <td>Curve tolerance:</td> <td>ISO9906:2012 3B2</td> </tr> </table> <p data-bbox="199 1400 319 1422">Materials:</p> <table data-bbox="199 1431 750 1601"> <tr> <td>Pump housing:</td> <td>Cast iron EN-JL1040 ASTM A48-40 B</td> </tr> <tr> <td>Impeller:</td> <td>Cast iron EN-JL1030 ASTM A48-30 B</td> </tr> </table> <p data-bbox="199 1635 343 1657">Installation:</p> <table data-bbox="199 1666 694 1930"> <tr> <td>Range of ambient temperature:</td> <td>-20 .. 55 °C</td> </tr> <tr> <td>Maximum operating pressure:</td> <td>16 bar</td> </tr> <tr> <td>Flange standard:</td> <td>DIN</td> </tr> <tr> <td>Pipe connection:</td> <td>DN 125</td> </tr> <tr> <td>Pump inlet:</td> <td>DN 125</td> </tr> <tr> <td>Pump outlet:</td> <td>DN 125</td> </tr> <tr> <td>Pressure rating:</td> <td>PN 16</td> </tr> <tr> <td>Port-to-port length:</td> <td>620 mm</td> </tr> <tr> <td>Flange size for motor:</td> <td>FF215</td> </tr> </table> <p data-bbox="199 1964 383 1986">Electrical data:</p> <table data-bbox="199 1995 678 2110"> <tr> <td>Motor type:</td> <td>SIEMENS</td> </tr> <tr> <td>IE Efficiency class:</td> <td>IE3</td> </tr> <tr> <td>Rated power - P2:</td> <td>1.5 kW</td> </tr> <tr> <td>Power (P2) required by pump:</td> <td>1.5 kW</td> </tr> </table>	Pumped liquid:	Water	Liquid temperature range:	-25 .. 120 °C	Selected liquid temperature:	20 °C	Density:	998.2 kg/m ³	Pump speed on which pump data are based:	970 rpm	Rated flow:	90 m ³ /h	Rated head:	4.34 m	Actual impeller diameter:	192 mm	Primary shaft seal:	BQQE	Curve tolerance:	ISO9906:2012 3B2	Pump housing:	Cast iron EN-JL1040 ASTM A48-40 B	Impeller:	Cast iron EN-JL1030 ASTM A48-30 B	Range of ambient temperature:	-20 .. 55 °C	Maximum operating pressure:	16 bar	Flange standard:	DIN	Pipe connection:	DN 125	Pump inlet:	DN 125	Pump outlet:	DN 125	Pressure rating:	PN 16	Port-to-port length:	620 mm	Flange size for motor:	FF215	Motor type:	SIEMENS	IE Efficiency class:	IE3	Rated power - P2:	1.5 kW	Power (P2) required by pump:	1.5 kW
Pumped liquid:	Water																																																		
Liquid temperature range:	-25 .. 120 °C																																																		
Selected liquid temperature:	20 °C																																																		
Density:	998.2 kg/m ³																																																		
Pump speed on which pump data are based:	970 rpm																																																		
Rated flow:	90 m ³ /h																																																		
Rated head:	4.34 m																																																		
Actual impeller diameter:	192 mm																																																		
Primary shaft seal:	BQQE																																																		
Curve tolerance:	ISO9906:2012 3B2																																																		
Pump housing:	Cast iron EN-JL1040 ASTM A48-40 B																																																		
Impeller:	Cast iron EN-JL1030 ASTM A48-30 B																																																		
Range of ambient temperature:	-20 .. 55 °C																																																		
Maximum operating pressure:	16 bar																																																		
Flange standard:	DIN																																																		
Pipe connection:	DN 125																																																		
Pump inlet:	DN 125																																																		
Pump outlet:	DN 125																																																		
Pressure rating:	PN 16																																																		
Port-to-port length:	620 mm																																																		
Flange size for motor:	FF215																																																		
Motor type:	SIEMENS																																																		
IE Efficiency class:	IE3																																																		
Rated power - P2:	1.5 kW																																																		
Power (P2) required by pump:	1.5 kW																																																		

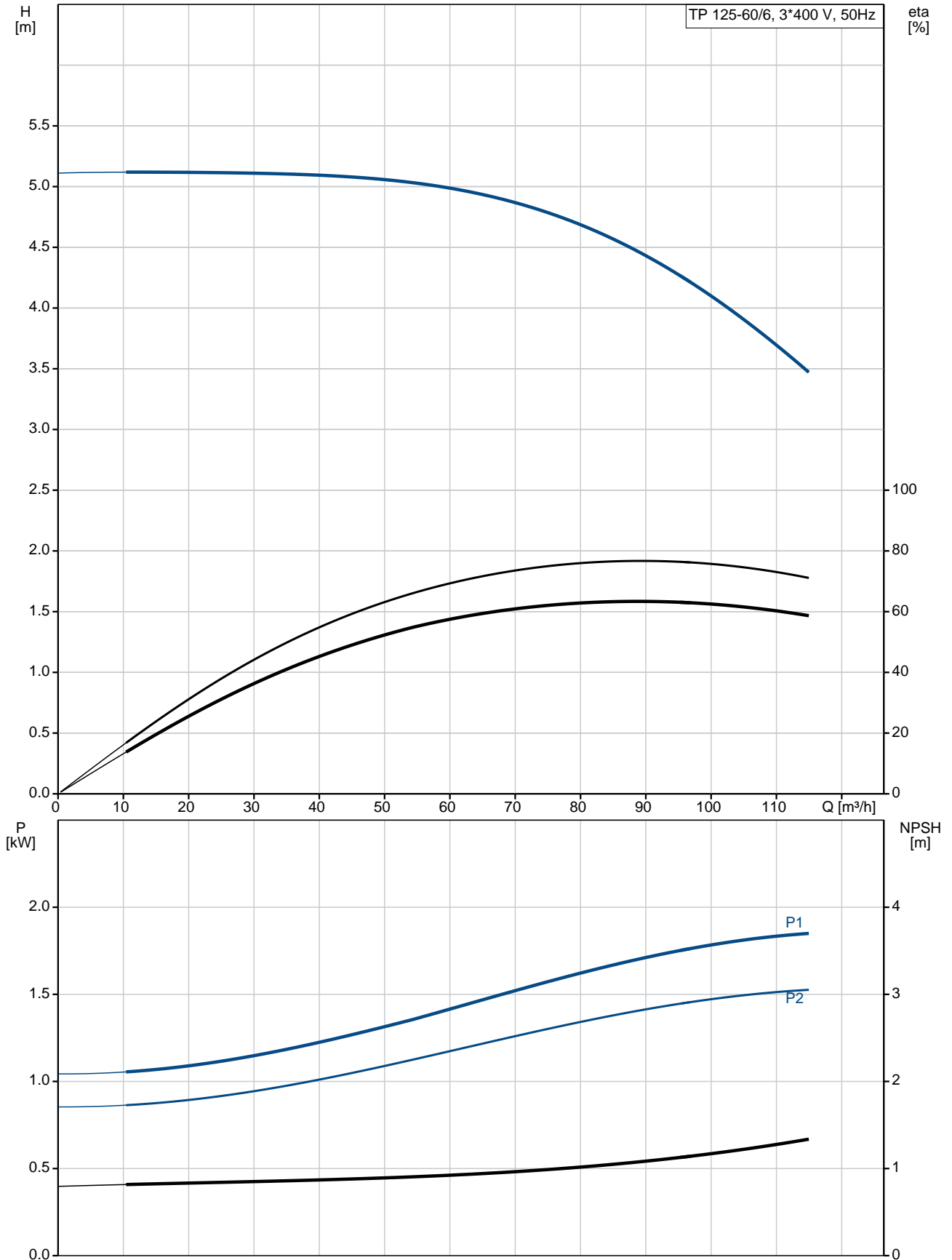
Qty. Description

Mains frequency: 50 Hz
Rated voltage: 3 x 220-240D/380-420Y V
Rated current: 6,60-5,90/3,80-3,40 A
Starting current: 560-560 %
Cos phi - power factor: 0.7
Rated speed: 970 rpm
Efficiency: IE3 82,5%
Motor efficiency at full load: 82.5-82.5 %
Motor efficiency at 3/4 load: 83.0-83.0 %
Motor efficiency at 1/2 load: 81.4-81.4 %
Number of poles: 6
Enclosure class (IEC 34-5): 55 Dust/Jetting
Insulation class (IEC 85): F
Motor No: 83W02206

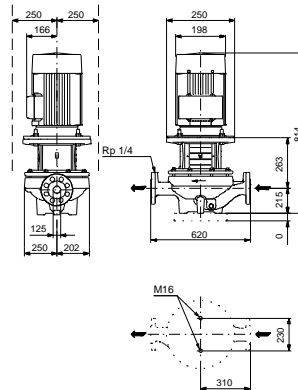
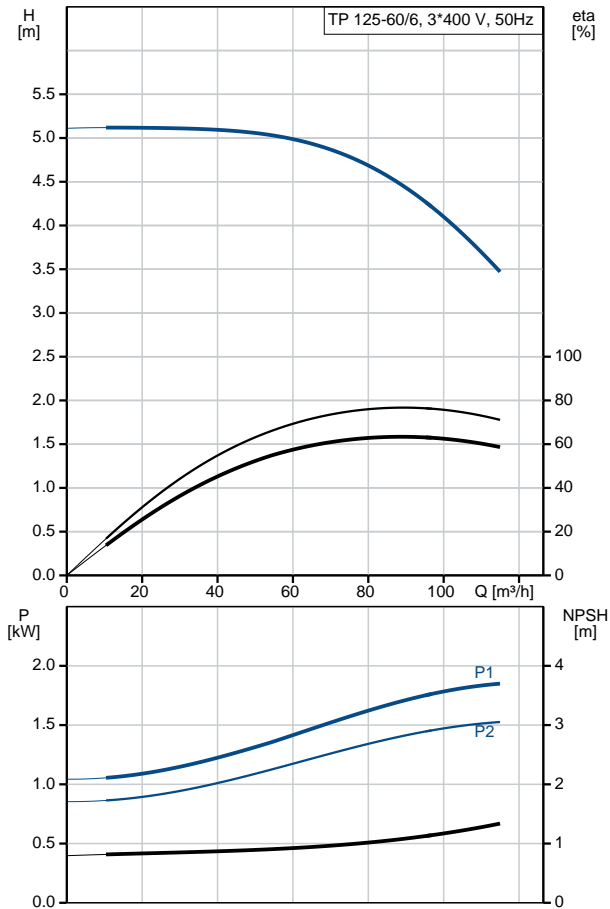
Others:

Minimum efficiency index, MEI η_{min} : 0.62
ErP status: EuP Standalone/Prod.
Net weight: 160 kg
Gross weight: 193 kg
Shipping volume: 0.75 m³
Danish VVS No.: 381727060
Finnish LVI No.: 4616132
Country of origin: HU
Custom tariff no.: 84137051

96109647 TP 125-60/6 A-F-A-BQQE-HX5 50 Hz



Description	Value
General information:	
Product name:	TP 125-60/6 A-F-A-BQQE-HX5
Product No:	96109647
EAN number:	5700396986319 5700396986319
Price:	3.237,00 GBP
Technical:	
Pump speed on which pump data are based:	970 rpm
Rated flow:	90 m ³ /h
Rated head:	4.34 m
Head max:	60 dm
Actual impeller diameter:	192 mm
Primary shaft seal:	BQQE
Curve tolerance:	ISO9906:2012 3B2
Pump version:	A
Model:	A
Materials:	
Pump housing:	Cast iron EN-JL1040 ASTM A48-40 B
Impeller:	Cast iron EN-JL1030 ASTM A48-30 B
Material code:	A
Installation:	
Range of ambient temperature:	-20 .. 55 °C
Maximum operating pressure:	16 bar
Flange standard:	DIN
Pipe connection:	DN 125
Pump inlet:	DN 125
Pump outlet:	DN 125
Pressure rating:	PN 16
Port-to-port length:	620 mm
Flange size for motor:	FF215
Connect code:	F
Liquid:	
Pumped liquid:	Water
Liquid temperature range:	-25 .. 120 °C
Selected liquid temperature:	20 °C
Density:	998.2 kg/m ³
Electrical data:	
Motor type:	SIEMENS
IE Efficiency class:	IE3
Rated power - P2:	1.5 kW
Power (P2) required by pump:	1.5 kW
Mains frequency:	50 Hz
Rated voltage:	3 x 220-240D/380-420Y V
Rated current:	6,60-5,90/3,80-3,40 A
Starting current:	560-560 %
Cos phi - power factor:	0.7
Rated speed:	970 rpm
Efficiency:	IE3 82,5%
Motor efficiency at full load:	82.5-82.5 %
Motor efficiency at 3/4 load:	83.0-83.0 %
Motor efficiency at 1/2 load:	81.4-81.4 %
Number of poles:	6
Enclosure class (IEC 34-5):	55 Dust/Jetting





Company name:

Created by:

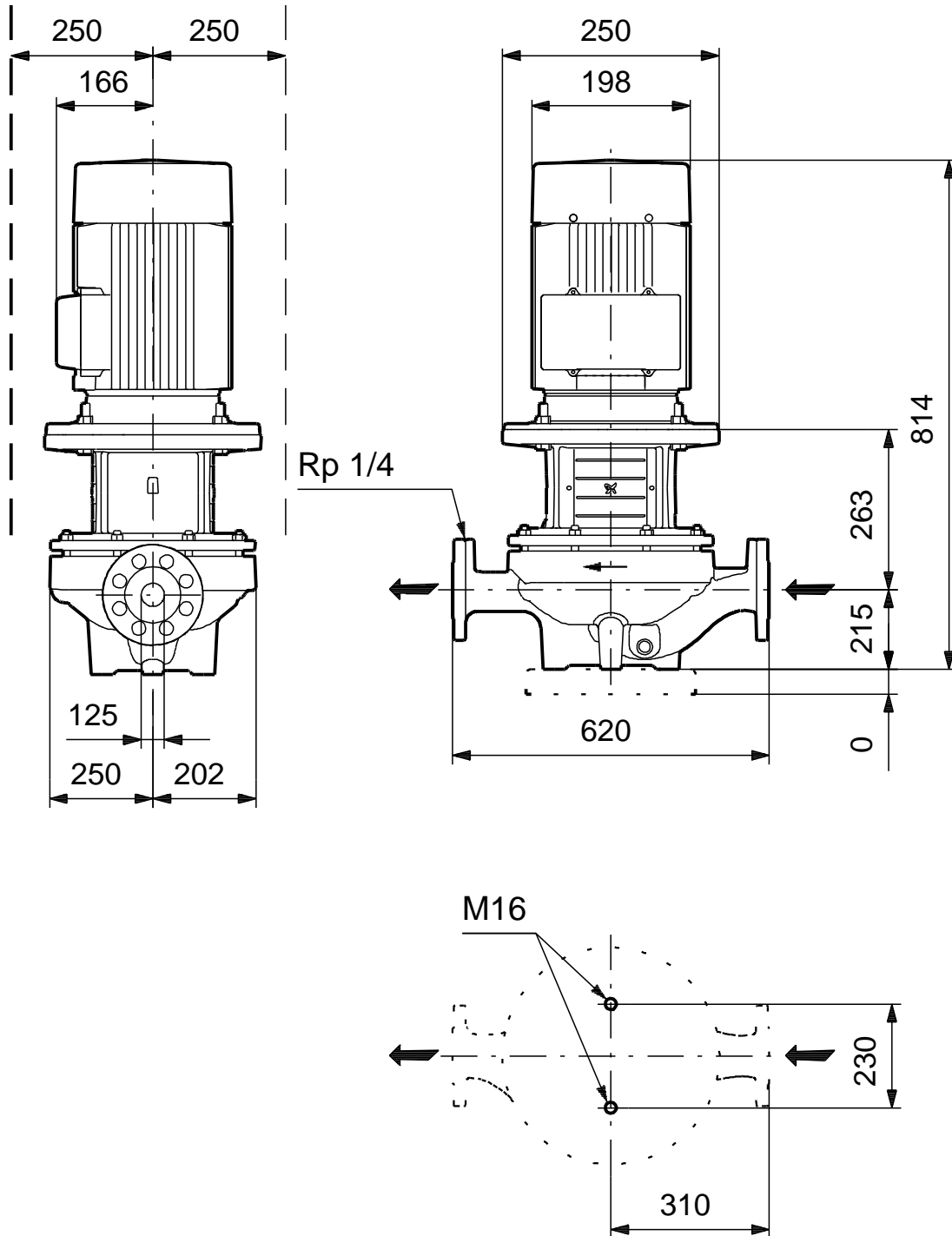
Phone:

Date:

10/03/2020

Description	Value
Insulation class (IEC 85):	F
Motor protec:	NONE
Motor No:	83W02206
Others:	
Minimum efficiency index, MEI %:	0.62
ErP status:	EuP Standalone/Prod.
Net weight:	160 kg
Gross weight:	193 kg
Shipping volume:	0.75 m ³
Danish VVS No.:	381727060
Finnish LVI No.:	4616132
Country of origin:	HU
Custom tariff no.:	84137051

96109647 TP 125-60/6 A-F-A-BQQE-HX5 50 Hz



Note! All units are in [mm] unless others are stated.
Disclaimer: This simplified dimensional drawing does not show all details.