
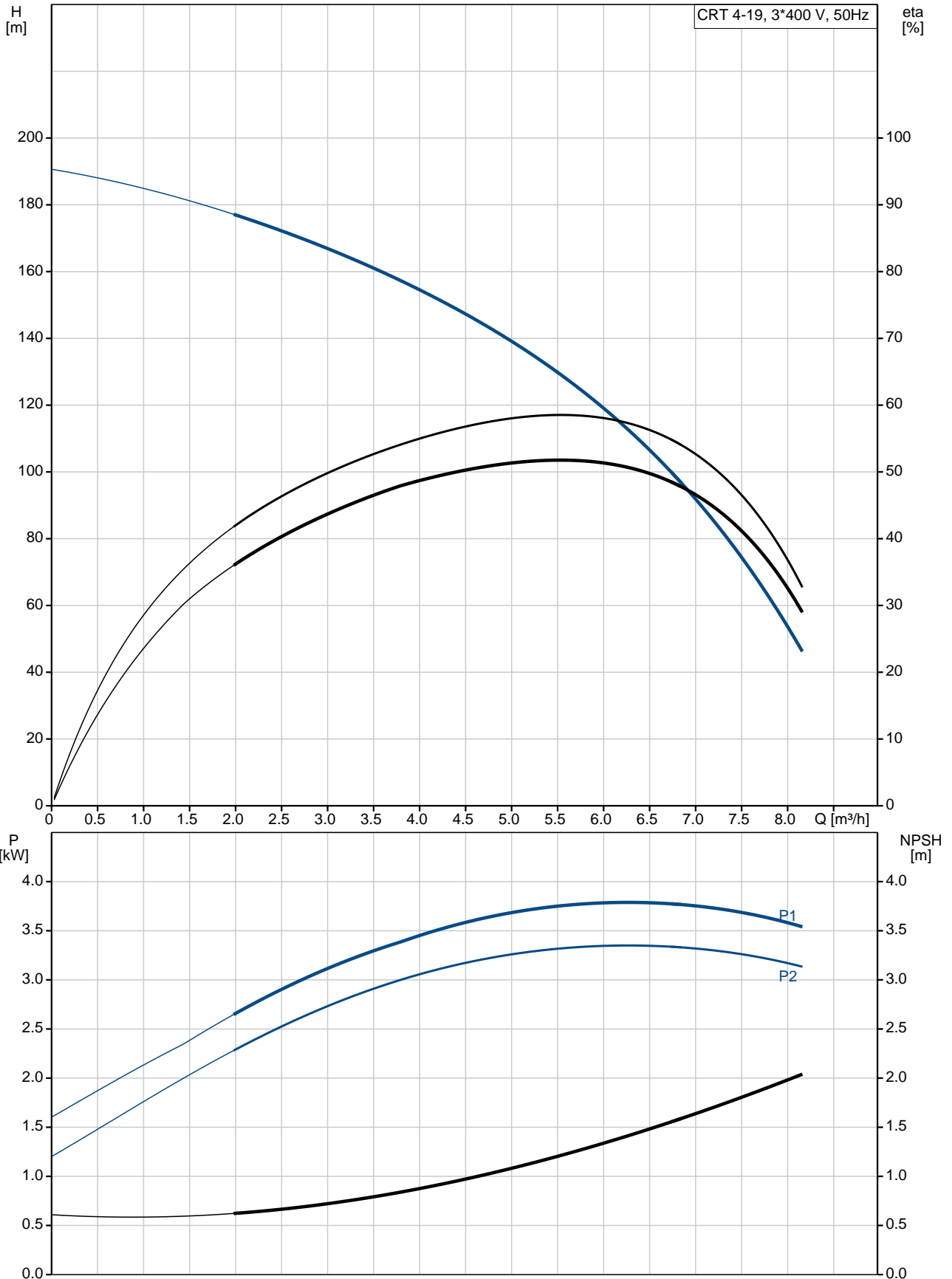


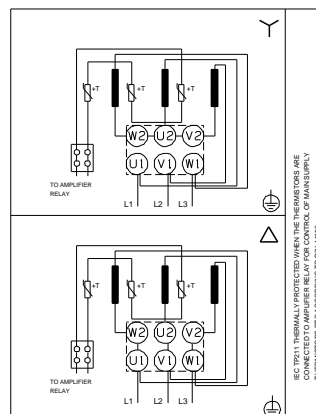
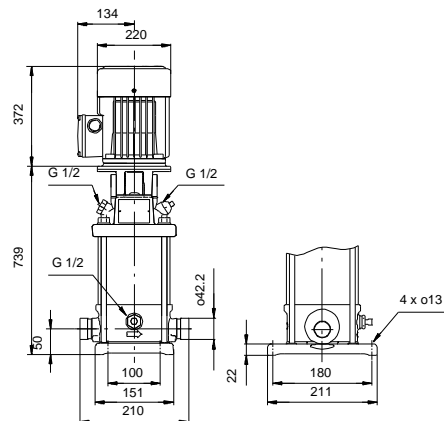
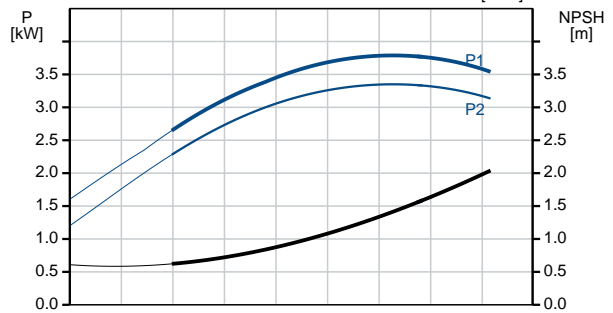
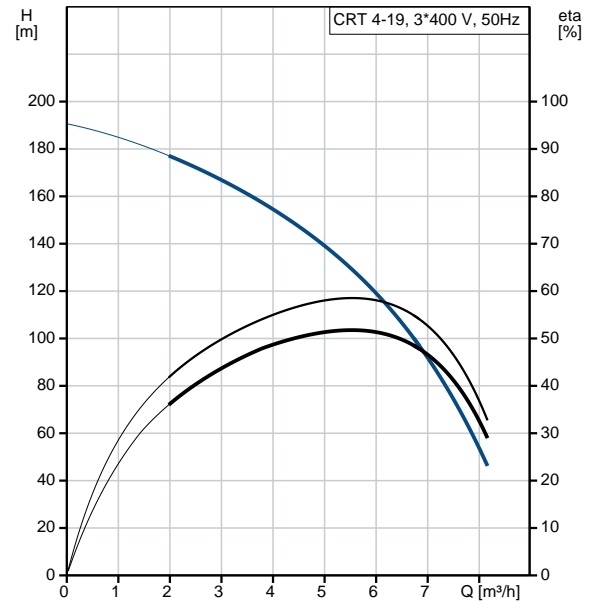
Qty.	Description
1	<p data-bbox="199 340 491 369"><b>CRT 4-19 A-P-A-E-AUUE</b></p>  <p data-bbox="199 660 470 689">Product No.: <a href="#">96100806</a></p> <p data-bbox="199 692 726 779">Vertical, non-self-priming, multistage, in-line, centrifugal pump for installation in pipe systems and mounting on a foundation.</p> <p data-bbox="199 808 678 837">The pump has the following characteristics:</p> <ul data-bbox="239 840 758 869" style="list-style-type: none"> <li>- Impellers, intermediate chambers and outer</li> </ul> <p data-bbox="199 871 885 900">Impeller: sleeve are made of Titanium.</p> <p data-bbox="199 902 1133 931">Pump housing: - Pump head cover and base are made of Titanium.</p> <ul data-bbox="239 934 670 963" style="list-style-type: none"> <li>- The shaft seal has assembly length</li> </ul> <p data-bbox="199 965 462 994">according to EN 12756.</p> <ul data-bbox="239 996 710 1048" style="list-style-type: none"> <li>- Power transmission is via cast iron split coupling.</li> </ul> <p data-bbox="199 1050 925 1102">Flange standard: - Pipework connection is via PJE flanges/couplings.</p> <p data-bbox="199 1131 941 1160">Phase: The motor is a 3-phase AC motor.</p> <p data-bbox="199 1189 279 1218">Liquid:</p> <p data-bbox="199 1220 630 1249">Pumped liquid: Water</p> <p data-bbox="199 1252 710 1281">Liquid temperature range: -20 .. 120 °C</p> <p data-bbox="199 1283 630 1312">Selected liquid temperature: 20 °C</p> <p data-bbox="199 1314 694 1344">Density: 998.2 kg/m<sup>3</sup></p> <p data-bbox="199 1373 319 1402">Technical:</p> <p data-bbox="199 1404 821 1433">Pump speed on which pump data are based: 2900 rpm</p> <p data-bbox="199 1435 630 1464">Rated flow: 6 m<sup>3</sup>/h</p> <p data-bbox="199 1467 654 1496">Rated head: 123.4 m</p> <p data-bbox="199 1498 630 1527">Primary shaft seal: AUUE</p> <p data-bbox="199 1529 638 1559">Approvals on nameplate: CE,TR</p> <p data-bbox="199 1561 758 1590">Curve tolerance: ISO9906:2012 3B</p> <p data-bbox="199 1619 311 1648">Materials:</p> <p data-bbox="199 1650 710 1702">Pump housing: Titanium ASTM B 265</p> <p data-bbox="199 1704 710 1756">Impeller: Titanium ASTM B 265</p> <p data-bbox="199 1758 638 1787">Bush material: NONE</p> <p data-bbox="199 1816 327 1845">Installation:</p> <p data-bbox="199 1848 630 1877">Maximum ambient temperature: 60 °C</p> <p data-bbox="199 1879 734 1930">Max pressure at stated temp: 25 bar / 120 °C 25 bar / -20 °C</p> <p data-bbox="199 1933 614 1962">Flange standard: PJE</p> <p data-bbox="199 1964 662 1993">Pipe connection: 42,4 mm</p> <p data-bbox="199 1995 638 2024">Flange size for motor: FT130</p> <p data-bbox="199 2054 367 2083">Electrical data:</p>

Qty.	Description
	<p>Motor type: 112MC IE Efficiency class: IE3 Rated power - P2: 4 kW Power (P2) required by pump: 4 kW 4 kW Mains frequency: 50 Hz Rated voltage: 3 x 220-240D/380-415Y V Rated current: 13.6/7.90 A Starting current: 1000-1110 % Cos phi - power factor: 0.87-0.87 Rated speed: 2920-2940 rpm Efficiency: IE3 88,1% Motor efficiency at full load: 88.1 % Motor efficiency at 3/4 load: 88.6 % Motor efficiency at 1/2 load: 85.2 % Number of poles: 2 Enclosure class (IEC 34-5): 55 Dust/Jetting Insulation class (IEC 85): F Motor No: 85U05413</p> <p>Others: Minimum efficiency index, MEI <math>\hat{\alpha}\%</math>: 0.7 Net weight: 50 kg Gross weight: 55 kg</p>

## 96100806 CRT 4-19 A-P-A-E-AUUE 50 Hz



Description	Value
<b>General information:</b>	
Product name:	CRT 4-19 A-P-A-E-AUUE
Product No:	96100806
EAN number:	5700395849318
Price:	
<b>Technical:</b>	
Pump speed on which pump data are based:	2900 rpm
Rated flow:	6 m³/h
Rated head:	123.4 m
Maximum head:	194 m
Head max:	194 m
Stages:	19
Impellers:	19
Primary shaft seal:	AUUE
Approvals on nameplate:	CE, TR
Curve tolerance:	ISO9906:2012 3B
Pump version:	A
Model:	A
<b>Materials:</b>	
Pump housing:	Titanium
Pump housing:	ASTM B 265
Impeller:	Titanium
Impeller:	ASTM B 265
Material code:	A
Code for rubber:	E
Bush material:	NONE
<b>Installation:</b>	
Maximum ambient temperature:	60 °C
Max pressure at stated temp:	25 bar / 120 °C
Max pressure at stated temp:	25 bar / -20 °C
Flange standard:	PJE
Pipe connection:	42,4 mm
Flange size for motor:	FT130
Connect code:	P
<b>Liquid:</b>	
Pumped liquid:	Water
Liquid temperature range:	-20 .. 120 °C
Selected liquid temperature:	20 °C
Density:	998.2 kg/m³
<b>Electrical data:</b>	
Motor type:	112MC
IE Efficiency class:	IE3
Rated power - P2:	4 kW
Power (P2) required by pump:	4 kW
Power (P2) required by pump:	4 kW
Mains frequency:	50 Hz
Rated voltage:	3 x 220-240D/380-415Y V
Rated current:	13.6/7.90 A
Starting current:	1000-1110 %
Cos phi - power factor:	0.87-0.87
Rated speed:	2920-2940 rpm
Efficiency:	IE3 88,1%
Motor efficiency at full load:	88.1 %
Motor efficiency at 3/4 load:	88.6 %
Motor efficiency at 1/2 load:	85.2 %
Number of poles:	2





Company name:

Created by:

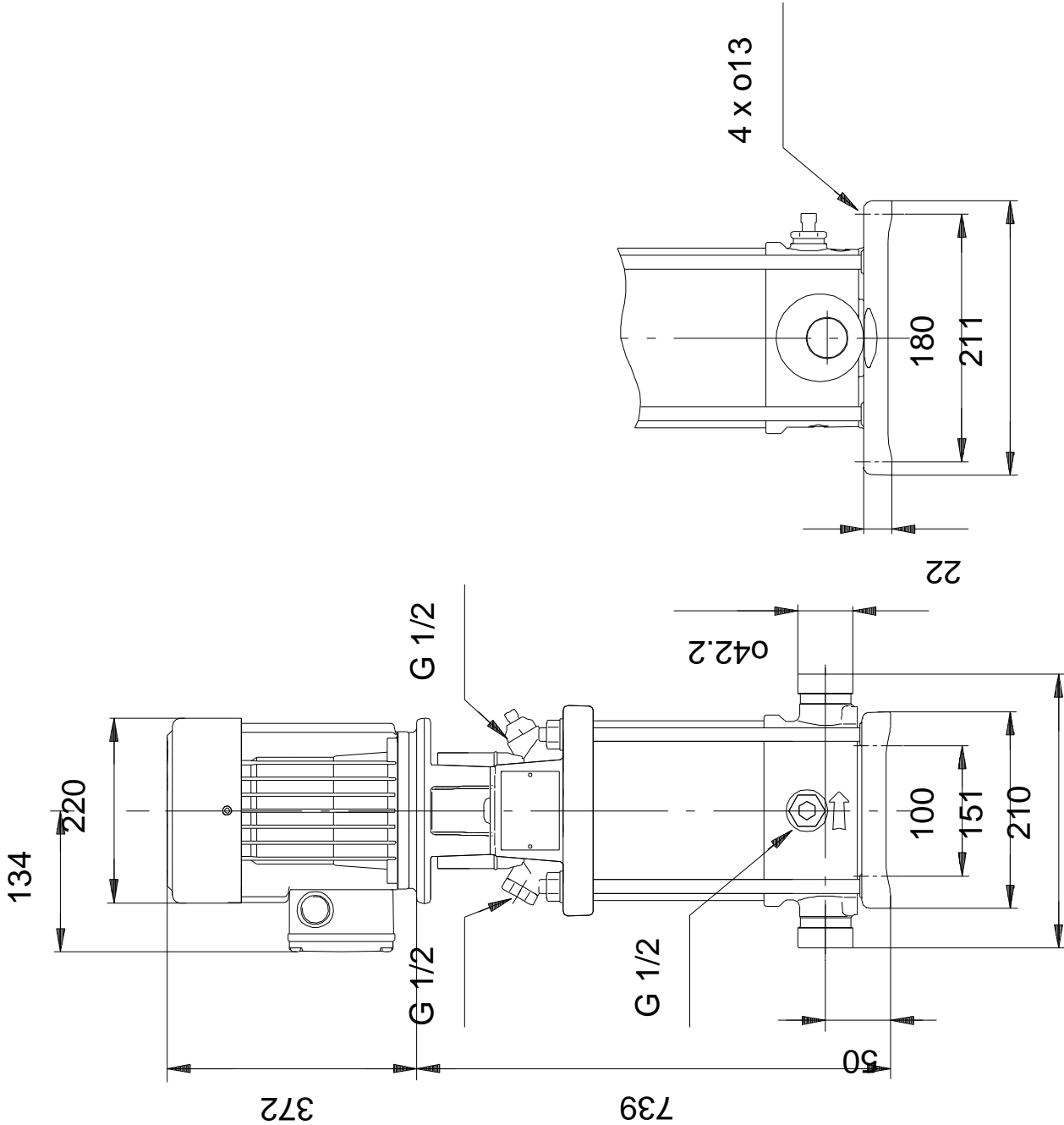
Phone:

Date:

19/01/2021

Description	Value
Enclosure class (IEC 34-5):	55 Dust/Jetting
Insulation class (IEC 85):	F
Motor protec:	PTC
Motor No:	85U05413
<b>Others:</b>	
Minimum efficiency index, MEI %:	0.7
Net weight:	50 kg
Gross weight:	55 kg

## 96100806 CRT 4-19 A-P-A-E-AUUE 50 Hz



Note! All units are in [mm] unless others are stated.  
Disclaimer: This simplified dimensional drawing does not show all details.

## 96100806 CRT 4-19 A-P-A-E-AUUE 50 Hz



Note! All units are in [mm] unless others are stated.