


Qty.	Description
1	<p><b>CRT 4-3 A-P-A-E-AUUE</b></p>  <p>Product No.: <a href="#">96100766</a>            Vertical, non-self-priming, multistage, in-line, centrifugal pump for installation in pipe systems and mounting on a foundation.</p> <p>The pump has the following characteristics:</p> <ul style="list-style-type: none"> <li>- Impellers, intermediate chambers and outer Impeller: sleeve are made of Titanium.</li> <li>- Pump housing: Pump head cover and base are made of Titanium.</li> <li>- The shaft seal has assembly length according to EN 12756.</li> <li>- Power transmission is via cast iron split coupling.</li> </ul> <p>Flange standard: - Pipework connection is via PJE flanges/couplings.</p> <p>Phase: The motor is a 1-phase AC motor.</p> <p>Liquid:            Pumped liquid: Water            Liquid temperature range: -20 .. 120 °C            Selected liquid temperature: 20 °C            Density: 998.2 kg/m<sup>3</sup></p> <p>Technical:            Pump speed on which pump data are based: 2900 rpm            Rated flow: 6 m<sup>3</sup>/h            Rated head: 15.8 m            Primary shaft seal: AUUE            Approvals on nameplate: CE,TR            Curve tolerance: ISO9906:2012 3B</p> <p>Materials:            Pump housing: Titanium            ASTM B 265            Impeller: Titanium            ASTM B 265            Bush material: NONE</p> <p>Installation:            Maximum ambient temperature: 40 °C            Max pressure at stated temp: 25 bar / 120 °C            25 bar / -20 °C            Flange standard: PJE            Pipe connection: 42,4 mm            Flange size for motor: FT100</p> <p>Electrical data:</p>



Company name:

Created by:

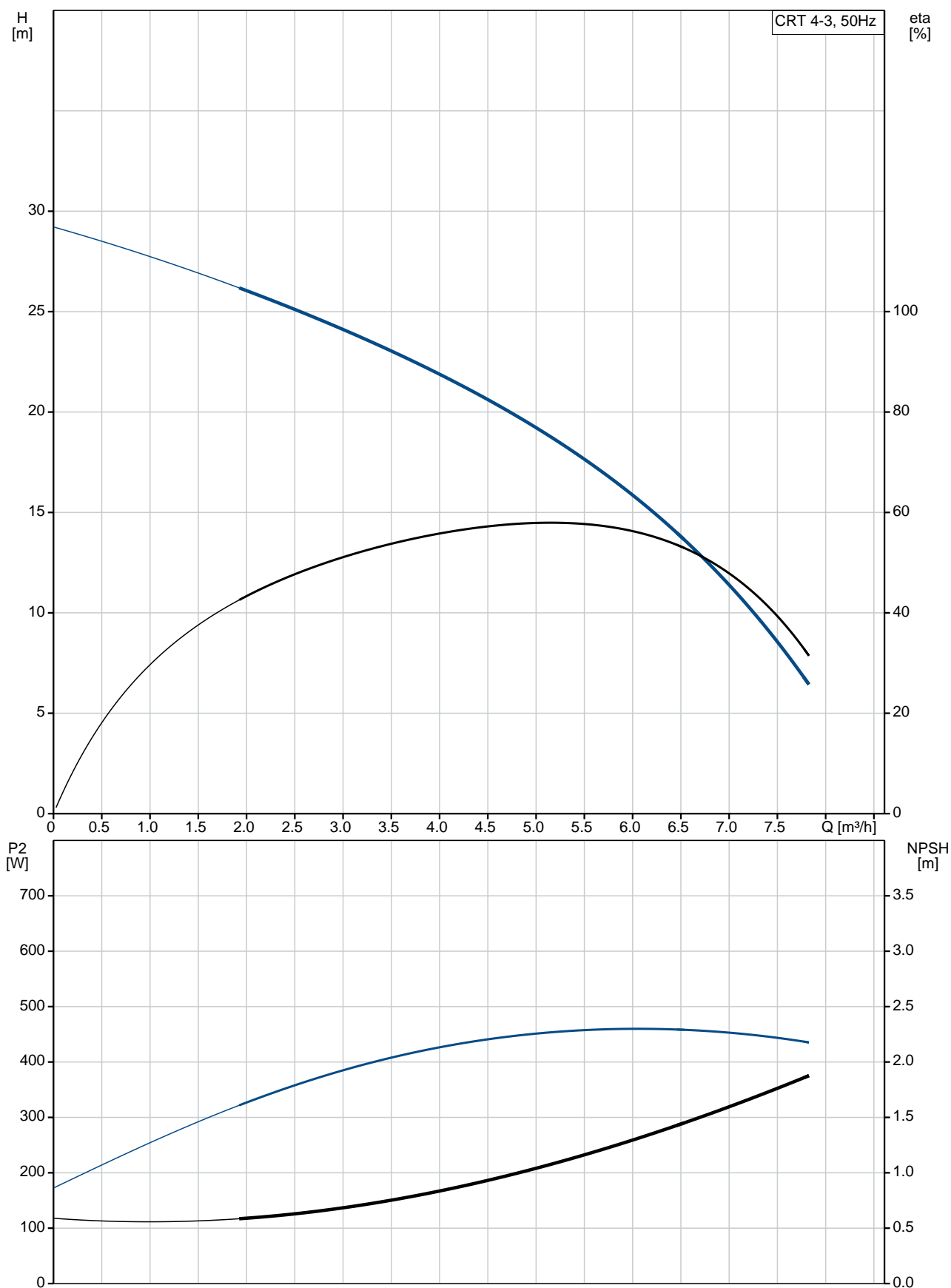
Phone:

Date:

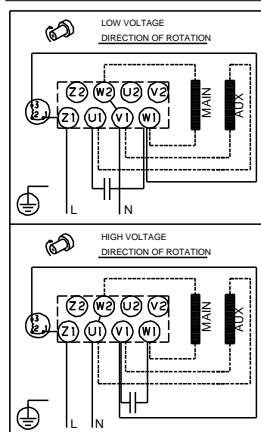
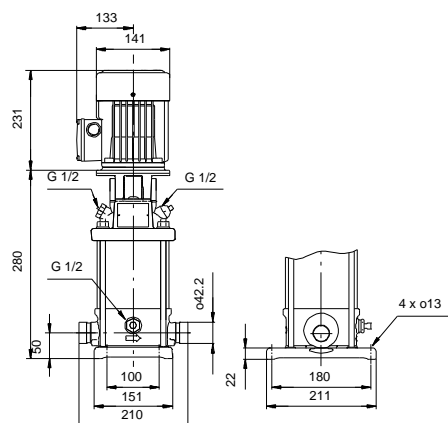
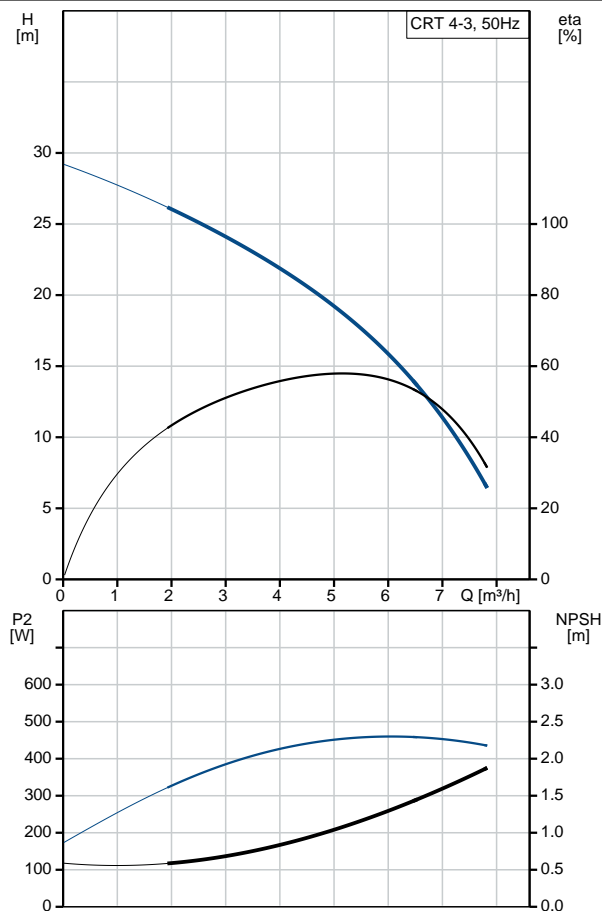
19/01/2021

Qty.	Description
	<p>Motor type: 80A</p> <p>Rated power - P2: 0.55 kW</p> <p>Power (P2) required by pump: 0.55 kW</p> <p>Mains frequency: 50 Hz</p> <p>Rated voltage: 1 x 220-230/240 V</p> <p>Rated current: 4.00/3.65 A</p> <p>Starting current: 280 %</p> <p>Cos phi - power factor: 0.99</p> <p>Rated speed: 2750 rpm</p> <p>Motor efficiency at full load: 66-64 %</p> <p>Number of poles: 2</p> <p>Enclosure class (IEC 34-5): 55 Dust/Jetting</p> <p>Insulation class (IEC 85): F</p> <p>Motor No: 85215103</p> <p>Others:</p> <p>Minimum efficiency index, MEI <math>\eta_{\text{min}}</math>: 0.7</p> <p>Net weight: 16.6 kg</p> <p>Gross weight: 21.6 kg</p>

## 96100766 CRT 4-3 A-P-A-E-AUUE 50 Hz



Description	Value
<b>General information:</b>	
Product name:	CRT 4-3 A-P-A-E-AUUE
Product No:	96100766
EAN number:	5700395848816
Price:	
<b>Technical:</b>	
Pump speed on which pump data are based:	2900 rpm
Rated flow:	6 m³/h
Rated head:	15.8 m
Maximum head:	30.1 m
Head max:	30.1 m
Stages:	3
Impellers:	3
Primary shaft seal:	AUUE
Approvals on nameplate:	CE, TR
Curve tolerance:	ISO9906:2012 3B
Pump version:	A
Model:	A
<b>Materials:</b>	
Pump housing:	Titanium
Pump housing:	ASTM B 265
Impeller:	Titanium
Impeller:	ASTM B 265
Material code:	A
Code for rubber:	E
Bush material:	NONE
<b>Installation:</b>	
Maximum ambient temperature:	40 °C
Max pressure at stated temp:	25 bar / 120 °C
Max pressure at stated temp:	25 bar / -20 °C
Flange standard:	PJE
Pipe connection:	42,4 mm
Flange size for motor:	FT100
Connect code:	P
<b>Liquid:</b>	
Pumped liquid:	Water
Liquid temperature range:	-20 .. 120 °C
Selected liquid temperature:	20 °C
Density:	998.2 kg/m³
<b>Electrical data:</b>	
Motor type:	80A
Rated power - P2:	0.55 kW
Power (P2) required by pump:	0.55 kW
Power (P2) required by pump:	0.55 kW
Mains frequency:	50 Hz
Rated voltage:	1 x 220-230/240 V
Rated current:	4.00/3.65 A
Starting current:	280 %
Cos phi - power factor:	0.99
Rated speed:	2750 rpm
Motor efficiency at full load:	66-64 %
Number of poles:	2
Enclosure class (IEC 34-5):	55 Dust/Jetting
Insulation class (IEC 85):	F
Motor protec:	PTO
Motor No:	85215103
<b>Others:</b>	





Company name:

Created by:

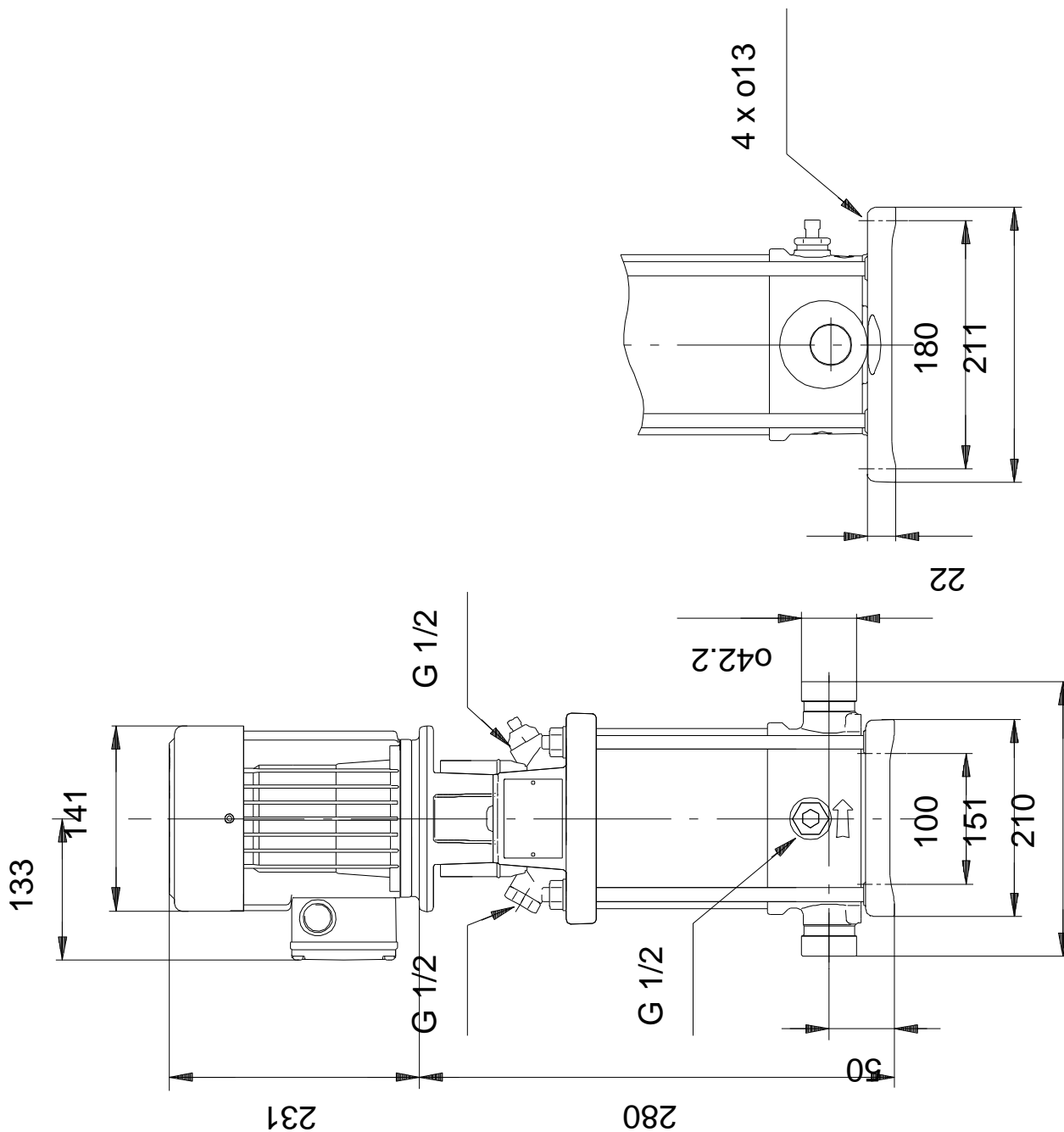
Phone:

Date:

19/01/2021

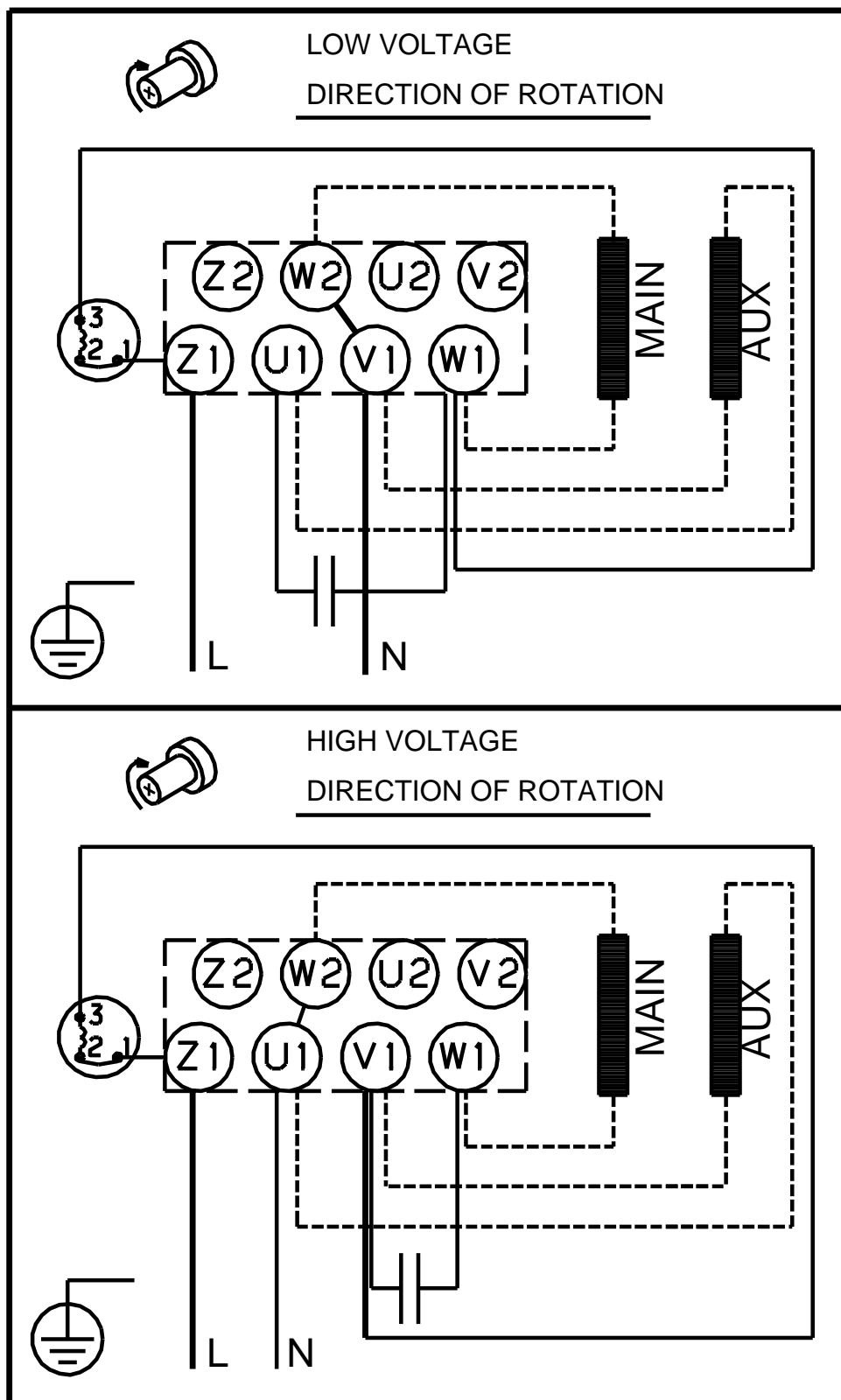
Description	Value
Minimum efficiency index, MEI â%¥:	0.7
Net weight:	16.6 kg
Gross weight:	21.6 kg

## 96100766 CRT 4-3 A-P-A-E-AUUE 50 Hz



Note! All units are in [mm] unless others are stated.  
Disclaimer: This simplified dimensional drawing does not show all details.

## 96100766 CRT 4-3 A-P-A-E-AUUE 50 Hz



Note! All units are in [mm] unless others are stated.