
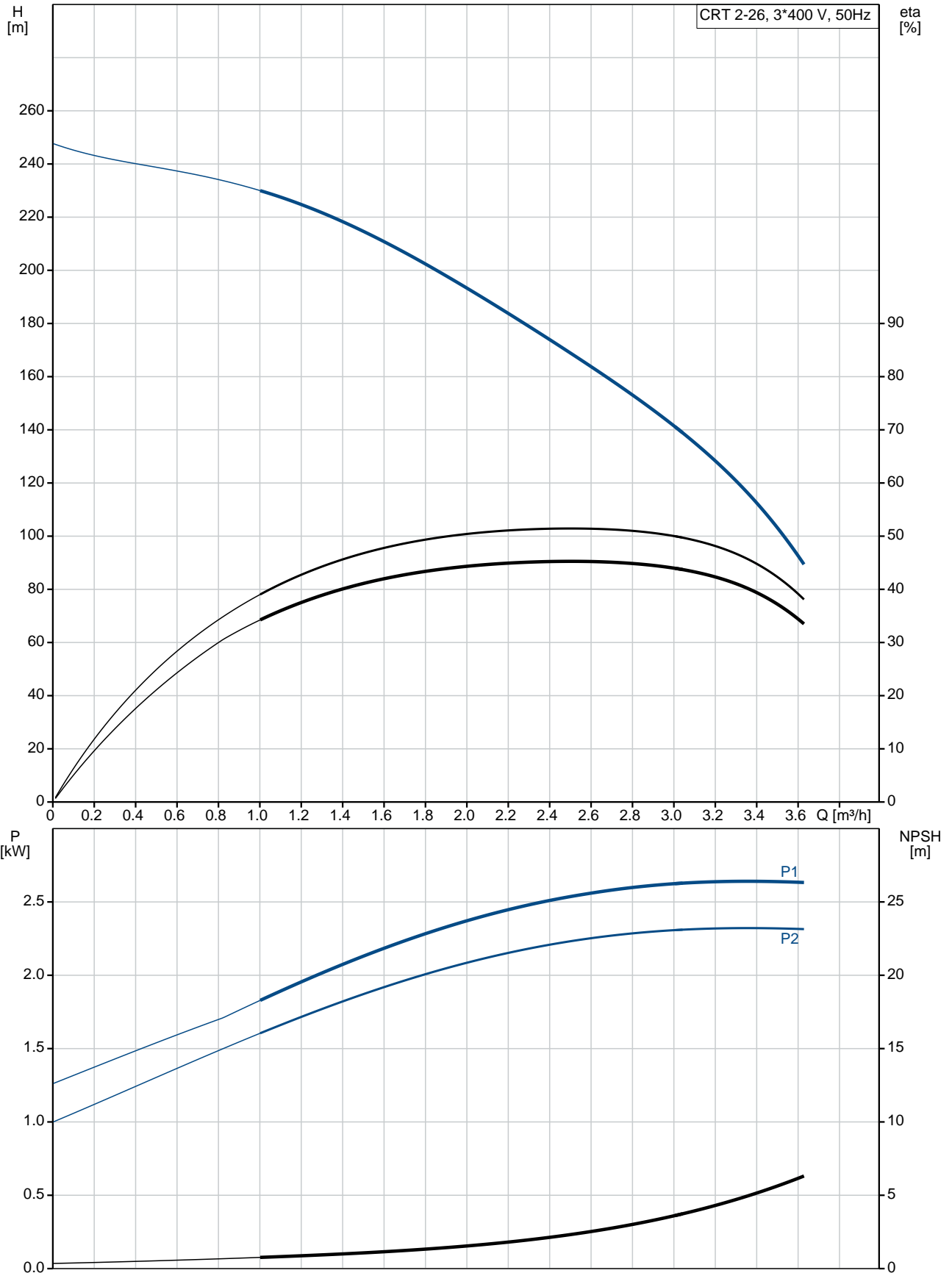


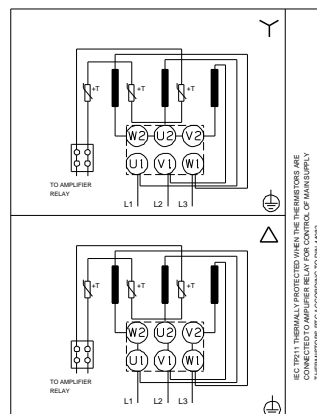
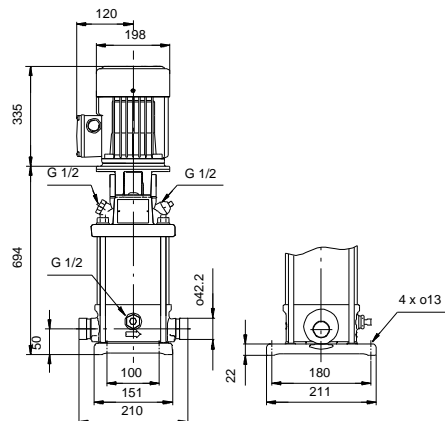
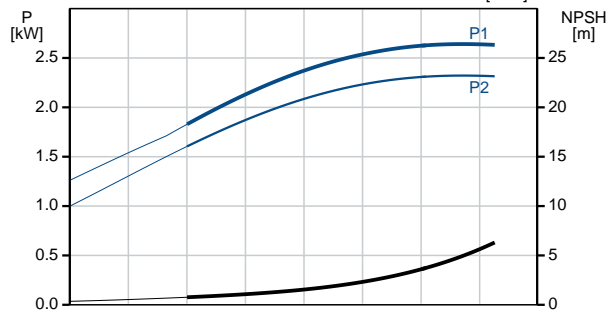
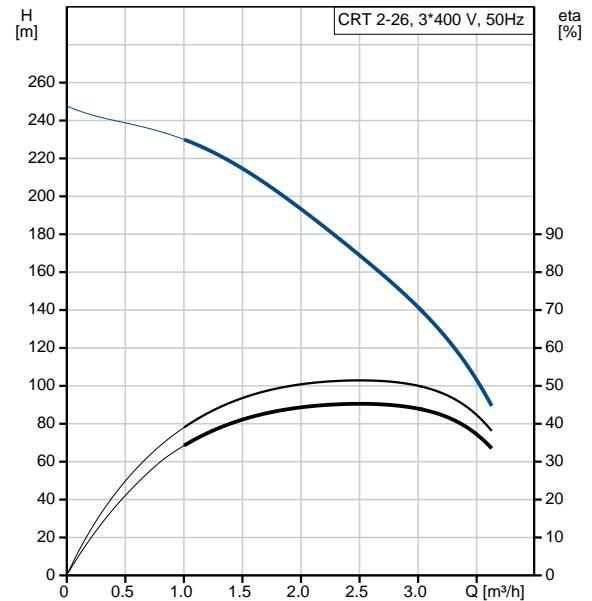
Qty.	Description
1	<p data-bbox="199 338 491 369">CRT 2-26 A-P-A-E-AUUE</p>  <p data-bbox="199 660 470 689">Product No.: 96100313</p> <p data-bbox="199 689 726 779">Vertical, non-self-priming, multistage, in-line, centrifugal pump for installation in pipe systems and mounting on a foundation.</p> <p data-bbox="199 806 678 835">The pump has the following characteristics:</p> <ul data-bbox="231 835 758 864" style="list-style-type: none"> - Impellers, intermediate chambers and outer <p data-bbox="199 864 885 896">Impeller: sleeve are made of Titanium.</p> <p data-bbox="199 896 1133 925">Pump housing: - Pump head cover and base are made of Titanium.</p> <ul data-bbox="231 925 670 954" style="list-style-type: none"> - The shaft seal has assembly length <p data-bbox="199 954 462 983">according to EN 12756.</p> <ul data-bbox="231 983 710 1043" style="list-style-type: none"> - Power transmission is via cast iron split coupling. <p data-bbox="199 1043 925 1104">Flange standard: - Pipework connection is via PJE flanges/couplings.</p> <p data-bbox="199 1131 941 1160">Phase: The motor is a 3-phase AC motor.</p> <p data-bbox="199 1193 279 1223">Liquid:</p> <p data-bbox="199 1223 630 1252">Pumped liquid: Water</p> <p data-bbox="199 1252 710 1281">Liquid temperature range: -20 .. 120 °C</p> <p data-bbox="199 1281 630 1310">Selected liquid temperature: 20 °C</p> <p data-bbox="199 1310 694 1339">Density: 998.2 kg/m³</p> <p data-bbox="199 1373 319 1402">Technical:</p> <p data-bbox="199 1402 821 1431">Pump speed on which pump data are based: 2900 rpm</p> <p data-bbox="199 1431 662 1460">Rated flow: 2.5 m³/h</p> <p data-bbox="199 1460 630 1489">Rated head: 171 m</p> <p data-bbox="199 1489 630 1518">Primary shaft seal: AUUE</p> <p data-bbox="199 1518 638 1547">Approvals on nameplate: CE,TR</p> <p data-bbox="199 1547 766 1576">Curve tolerance: ISO9906:2012 3B</p> <p data-bbox="199 1610 311 1639">Materials:</p> <p data-bbox="199 1639 710 1700">Pump housing: Titanium ASTM B 265</p> <p data-bbox="199 1700 710 1760">Impeller: Titanium ASTM B 265</p> <p data-bbox="199 1760 638 1792">Bush material: NONE</p> <p data-bbox="199 1816 327 1845">Installation:</p> <p data-bbox="199 1845 630 1874">Maximum ambient temperature: 60 °C</p> <p data-bbox="199 1874 734 1935">Max pressure at stated temp: 25 bar / 120 °C 25 bar / -20 °C</p> <p data-bbox="199 1935 614 1964">Flange standard: PJE</p> <p data-bbox="199 1964 662 1993">Pipe connection: 42,4 mm</p> <p data-bbox="199 1993 638 2022">Flange size for motor: FT130</p> <p data-bbox="199 2056 367 2085">Electrical data:</p>

Qty.	Description
	<p>Motor type: 100LC</p> <p>IE Efficiency class: IE3</p> <p>Rated power - P2: 3 kW</p> <p>Power (P2) required by pump: 3 kW</p> <p>Mains frequency: 50 Hz</p> <p>Rated voltage: 3 x 220-240D/380-415Y V</p> <p>Rated current: 11.0/6.30 A</p> <p>Starting current: 840-920 %</p> <p>Cos phi - power factor: 0.87-0.82</p> <p>Rated speed: 2900-2920 rpm</p> <p>Efficiency: IE3 87,1%</p> <p>Motor efficiency at full load: 87.1 %</p> <p>Motor efficiency at 3/4 load: 88.0 %</p> <p>Motor efficiency at 1/2 load: 87.7 %</p> <p>Number of poles: 2</p> <p>Enclosure class (IEC 34-5): 55 Dust/Jetting</p> <p>Insulation class (IEC 85): F</p> <p>Motor No: 85U05510</p> <p>Others:</p> <p>Minimum efficiency index, MEI $\hat{\alpha}\%$: 0.7</p> <p>Net weight: 39.6 kg</p> <p>Gross weight: 44.6 kg</p>

96100313 CRT 2-26 A-P-A-E-AUUE 50 Hz



Description	Value
General information:	
Product name:	CRT 2-26 A-P-A-E-AUUE
Product No:	96100313
EAN number:	5700395842715
Price:	
Technical:	
Pump speed on which pump data are based:	2900 rpm
Rated flow:	2.5 m ³ /h
Rated head:	171 m
Maximum head:	205 m
Head max:	205 m
Stages:	26
Impellers:	26
Primary shaft seal:	AUUE
Approvals on nameplate:	CE, TR
Curve tolerance:	ISO9906:2012 3B
Pump version:	A
Model:	A
Materials:	
Pump housing:	Titanium
Pump housing:	ASTM B 265
Impeller:	Titanium
Impeller:	ASTM B 265
Material code:	A
Code for rubber:	E
Bush material:	NONE
Installation:	
Maximum ambient temperature:	60 °C
Max pressure at stated temp:	25 bar / 120 °C
Max pressure at stated temp:	25 bar / -20 °C
Flange standard:	PJE
Pipe connection:	42,4 mm
Flange size for motor:	FT130
Connect code:	P
Liquid:	
Pumped liquid:	Water
Liquid temperature range:	-20 .. 120 °C
Selected liquid temperature:	20 °C
Density:	998.2 kg/m ³
Electrical data:	
Motor type:	100LC
IE Efficiency class:	IE3
Rated power - P2:	3 kW
Power (P2) required by pump:	3 kW
Power (P2) required by pump:	3 kW
Mains frequency:	50 Hz
Rated voltage:	3 x 220-240D/380-415Y V
Rated current:	11.0/6.30 A
Starting current:	840-920 %
Cos phi - power factor:	0.87-0.82
Rated speed:	2900-2920 rpm
Efficiency:	IE3 87,1%
Motor efficiency at full load:	87.1 %
Motor efficiency at 3/4 load:	88.0 %
Motor efficiency at 1/2 load:	87.7 %
Number of poles:	2





Company name:

Created by:

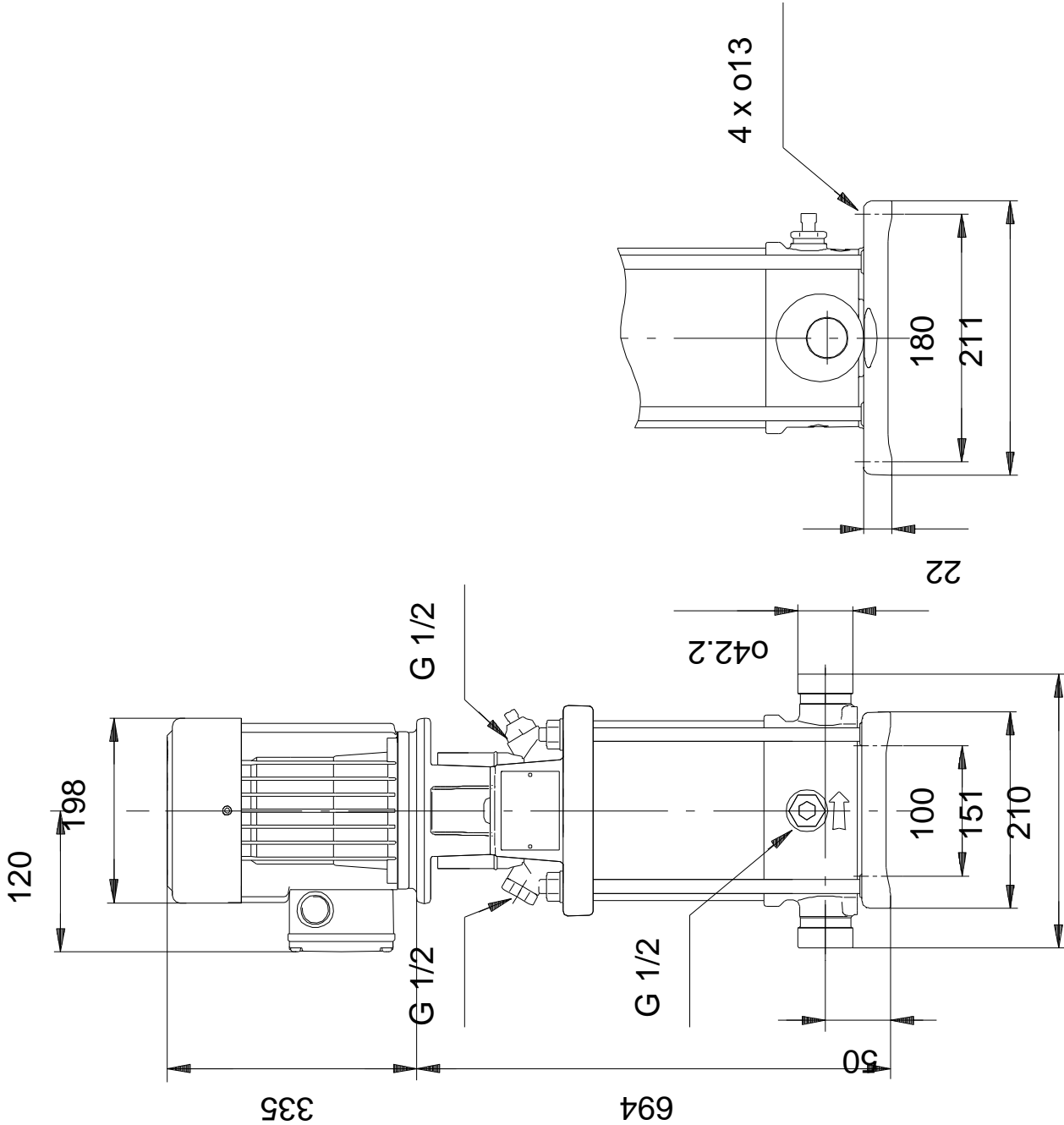
Phone:

Date:

19/01/2021

Description	Value
Enclosure class (IEC 34-5):	55 Dust/Jetting
Insulation class (IEC 85):	F
Motor protec:	PTC
Motor No:	85U05510
Others:	
Minimum efficiency index, MEI %:	0.7
Net weight:	39.6 kg
Gross weight:	44.6 kg

96100313 CRT 2-26 A-P-A-E-AUUE 50 Hz



Note! All units are in [mm] unless others are stated.
Disclaimer: This simplified dimensional drawing does not show all details.

96100313 CRT 2-26 A-P-A-E-AUUE 50 Hz



IEC TP211 THERMALLY PROTECTED WHEN THE THERMISTORS ARE
CONNECTED TO AMPLIFIER RELAY FOR CONTROL OF MAIN SUPPLY
THERMISTORS PTC ACCORDING TO DIN 44082

Note! All units are in [mm] unless others are stated.