
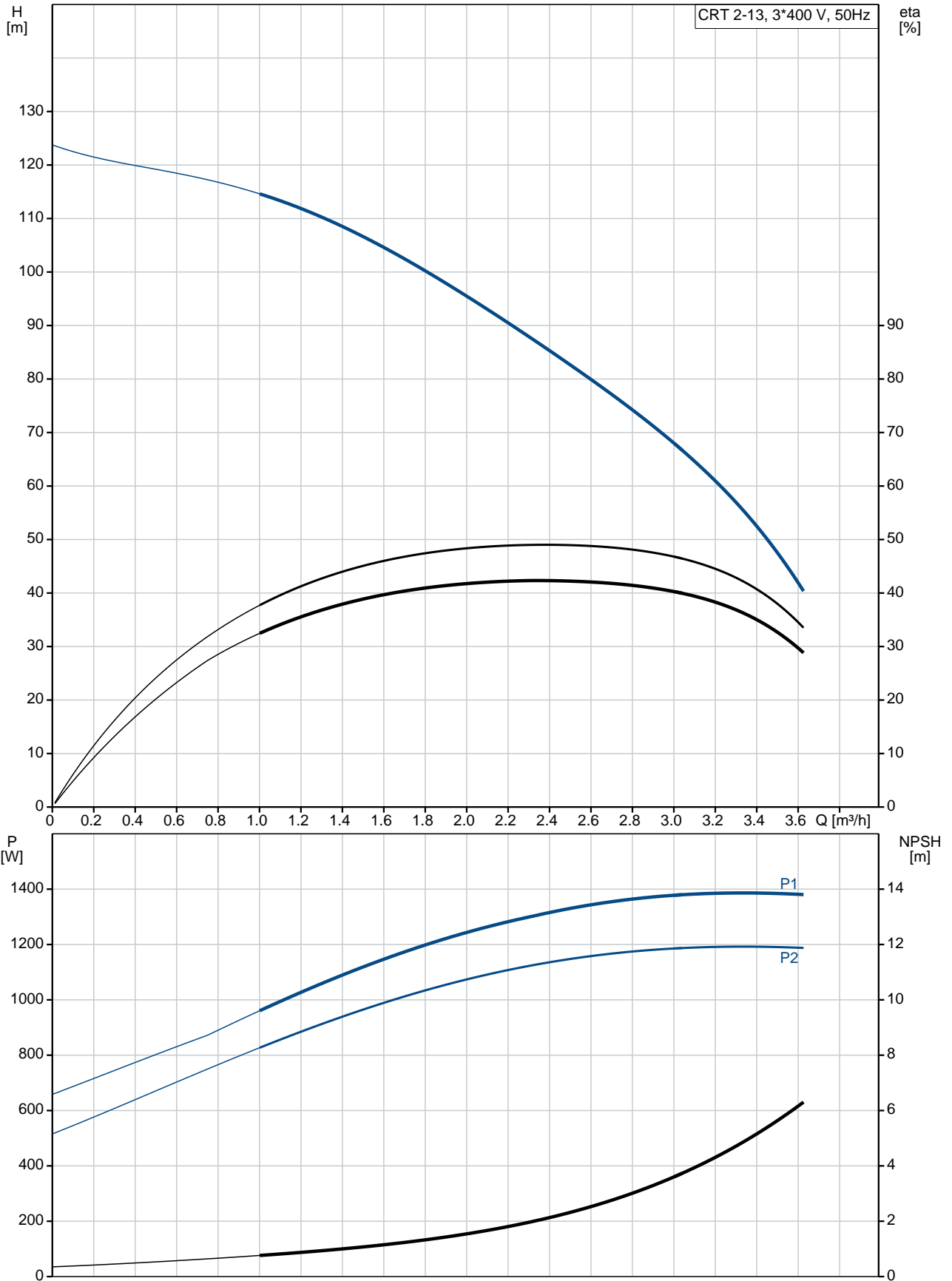


Qty.	Description
1	<p data-bbox="199 338 491 369"><b>CRT 2-13 A-P-A-E-AUUE</b></p>  <p data-bbox="199 660 469 689">Product No.: <a href="#">96100309</a></p> <p data-bbox="199 692 724 779">Vertical, non-self-priming, multistage, in-line, centrifugal pump for installation in pipe systems and mounting on a foundation.</p> <p data-bbox="199 808 679 837">The pump has the following characteristics:</p> <ul data-bbox="236 840 759 869" style="list-style-type: none"> <li>- Impellers, intermediate chambers and outer</li> </ul> <p data-bbox="199 871 887 900">Impeller: sleeve are made of Titanium.</p> <p data-bbox="199 902 1131 931">Pump housing: - Pump head cover and base are made of Titanium.</p> <ul data-bbox="236 934 668 963" style="list-style-type: none"> <li>- The shaft seal has assembly length</li> </ul> <p data-bbox="199 965 464 994">according to EN 12756.</p> <ul data-bbox="236 996 711 1048" style="list-style-type: none"> <li>- Power transmission is via cast iron split coupling.</li> </ul> <p data-bbox="199 1050 927 1106">Flange standard: - Pipework connection is via PJE flanges/couplings.</p> <p data-bbox="199 1135 940 1164">Phase: The motor is a 3-phase AC motor.</p> <p data-bbox="199 1193 277 1223">Liquid:</p> <p data-bbox="199 1225 635 1254">Pumped liquid: Water</p> <p data-bbox="199 1256 707 1285">Liquid temperature range: -20 .. 120 °C</p> <p data-bbox="199 1288 632 1317">Selected liquid temperature: 20 °C</p> <p data-bbox="199 1319 700 1348">Density: 998.2 kg/m<sup>3</sup></p> <p data-bbox="199 1377 319 1406">Technical:</p> <p data-bbox="199 1408 821 1438">Pump speed on which pump data are based: 2900 rpm</p> <p data-bbox="199 1440 660 1469">Rated flow: 2.5 m<sup>3</sup>/h</p> <p data-bbox="199 1471 644 1500">Rated head: 74.1 m</p> <p data-bbox="199 1503 636 1532">Primary shaft seal: AUUE</p> <p data-bbox="199 1534 641 1563">Approvals on nameplate: CE,TR</p> <p data-bbox="199 1565 764 1594">Curve tolerance: ISO9906:2012 3B</p> <p data-bbox="199 1624 312 1653">Materials:</p> <p data-bbox="199 1655 708 1711">Pump housing: Titanium ASTM B 265</p> <p data-bbox="199 1713 708 1769">Impeller: Titanium ASTM B 265</p> <p data-bbox="199 1771 639 1800">Bush material: NONE</p> <p data-bbox="199 1830 330 1859">Installation:</p> <p data-bbox="199 1861 632 1890">Maximum ambient temperature: 60 °C</p> <p data-bbox="199 1892 735 1926">Max pressure at stated temp: 25 bar / 120 °C</p> <p data-bbox="564 1928 730 1957">25 bar / -20 °C</p> <p data-bbox="199 1960 614 1989">Flange standard: PJE</p> <p data-bbox="199 1991 665 2020">Pipe connection: 42,4 mm</p> <p data-bbox="199 2022 639 2051">Flange size for motor: FT115</p> <p data-bbox="199 2080 368 2110">Electrical data:</p>

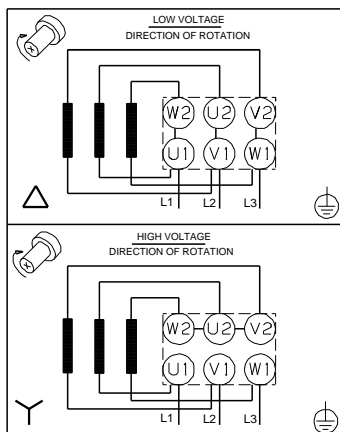
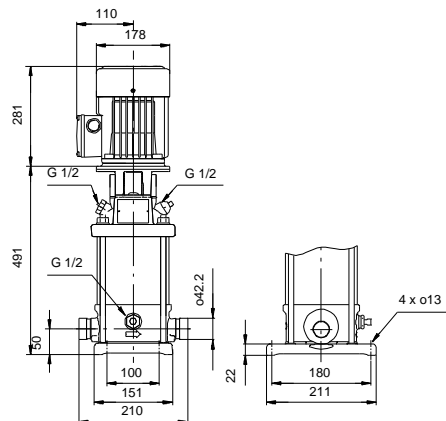
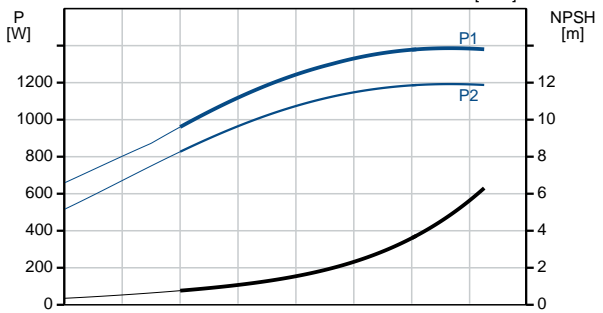
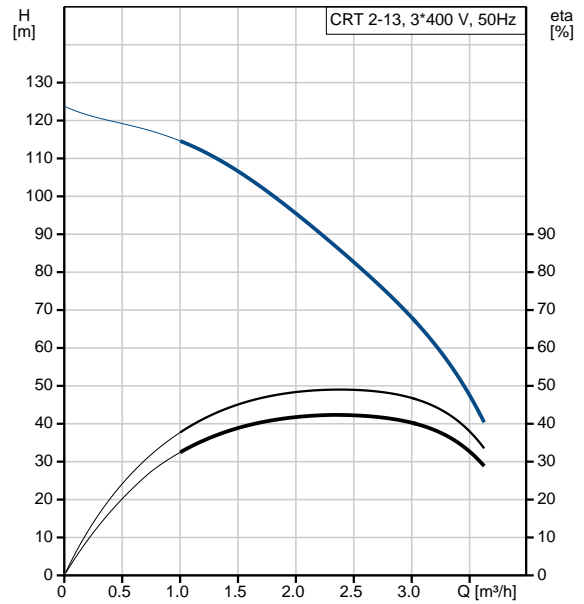
**Qty. Description**

Motor type:	90SD
IE Efficiency class:	IE3
Rated power - P2:	1.5 kW
Power (P2) required by pump:	1.5 kW
Mains frequency:	50 Hz
Rated voltage:	3 x 220-240D/380-415Y V
Rated current:	5.70/3.30 A
Starting current:	750-820 %
Cos phi - power factor:	0.84-0.78
Rated speed:	2890-2910 rpm
Efficiency:	IE3 84,2%
Motor efficiency at full load:	84.2-84.2 %
Motor efficiency at 3/4 load:	86.4 %
Motor efficiency at 1/2 load:	86.0 %
Number of poles:	2
Enclosure class (IEC 34-5):	55 Dust/Jetting
Insulation class (IEC 85):	F
Motor No:	85U01906
Others:	
Minimum efficiency index, MEI $\hat{\alpha}\%$ :	0.7
Net weight:	31.1 kg
Gross weight:	36.1 kg

## 96100309 CRT 2-13 A-P-A-E-AUUE 50 Hz



Description	Value
<b>General information:</b>	
Product name:	CRT 2-13 A-P-A-E-AUUE
Product No:	96100309
EAN number:	5700395842678
Price:	
<b>Technical:</b>	
Pump speed on which pump data are based:	2900 rpm
Rated flow:	2.5 m <sup>3</sup> /h
Rated head:	74.1 m
Maximum head:	122 m
Head max:	122 m
Stages:	15
Impellers:	13
Primary shaft seal:	AUUE
Approvals on nameplate:	CE, TR
Curve tolerance:	ISO9906:2012 3B
Pump version:	A
Model:	A
<b>Materials:</b>	
Pump housing:	Titanium
Pump housing:	ASTM B 265
Impeller:	Titanium
Impeller:	ASTM B 265
Material code:	A
Code for rubber:	E
Bush material:	NONE
<b>Installation:</b>	
Maximum ambient temperature:	60 °C
Max pressure at stated temp:	25 bar / 120 °C
Max pressure at stated temp:	25 bar / -20 °C
Flange standard:	PJE
Pipe connection:	42,4 mm
Flange size for motor:	FT115
Connect code:	P
<b>Liquid:</b>	
Pumped liquid:	Water
Liquid temperature range:	-20 .. 120 °C
Selected liquid temperature:	20 °C
Density:	998.2 kg/m <sup>3</sup>
<b>Electrical data:</b>	
Motor type:	90SD
IE Efficiency class:	IE3
Rated power - P2:	1.5 kW
Power (P2) required by pump:	1.5 kW
Power (P2) required by pump:	1.5 kW
Mains frequency:	50 Hz
Rated voltage:	3 x 220-240D/380-415Y V
Rated current:	5.70/3.30 A
Starting current:	750-820 %
Cos phi - power factor:	0.84-0.78
Rated speed:	2890-2910 rpm
Efficiency:	IE3 84,2%
Motor efficiency at full load:	84.2-84.2 %
Motor efficiency at 3/4 load:	86.4 %
Motor efficiency at 1/2 load:	86.0 %
Number of poles:	2





Company name:

Created by:

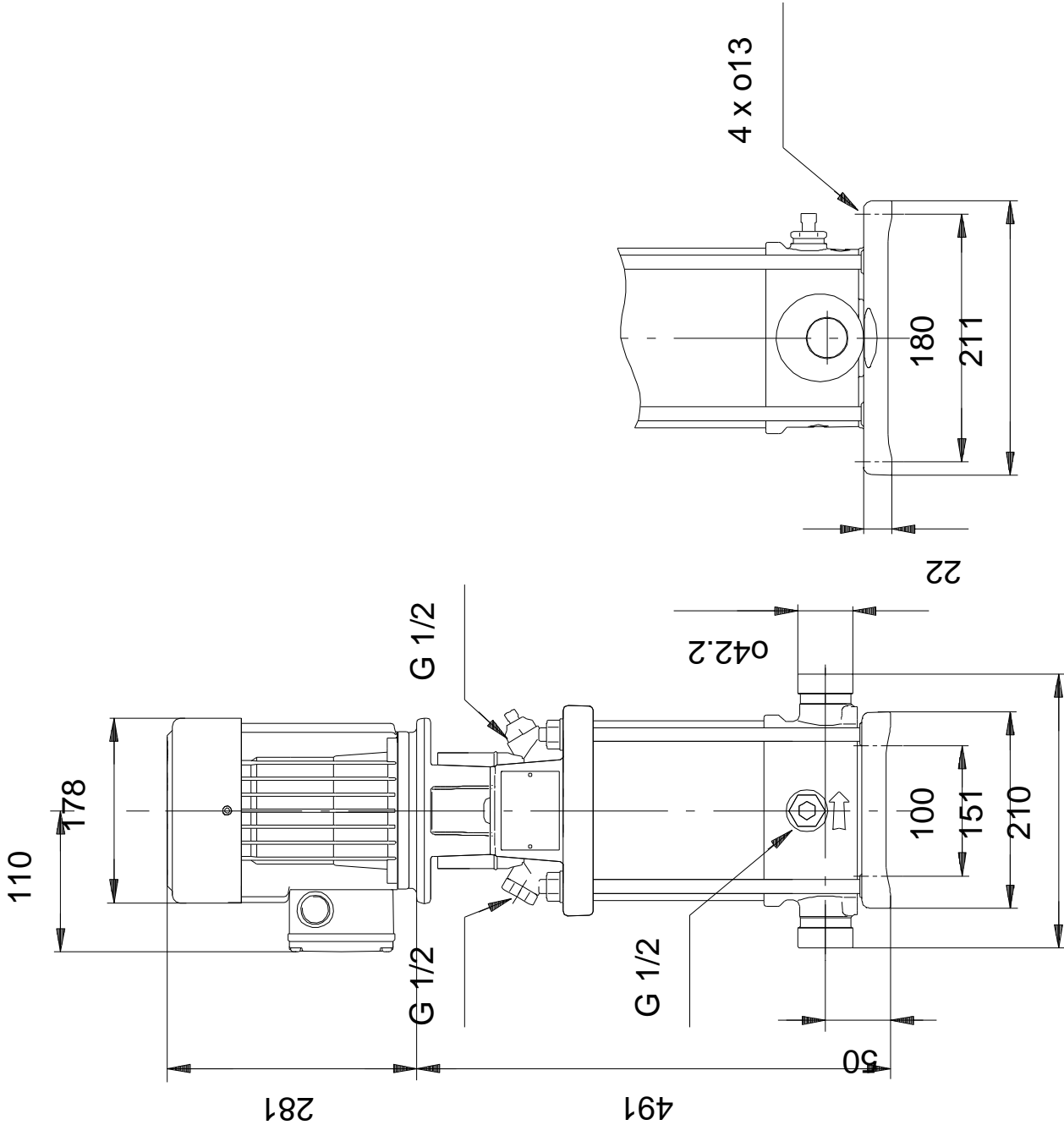
Phone:

Date:

19/01/2021

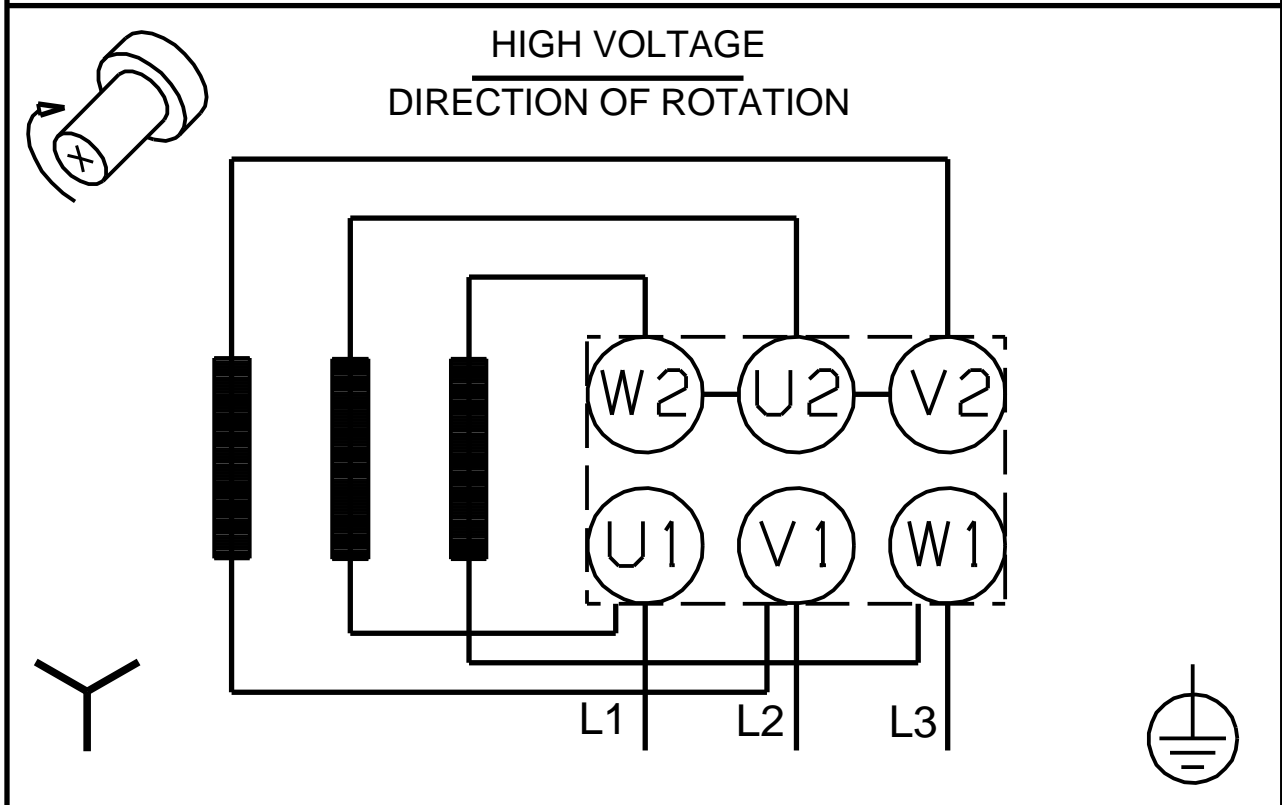
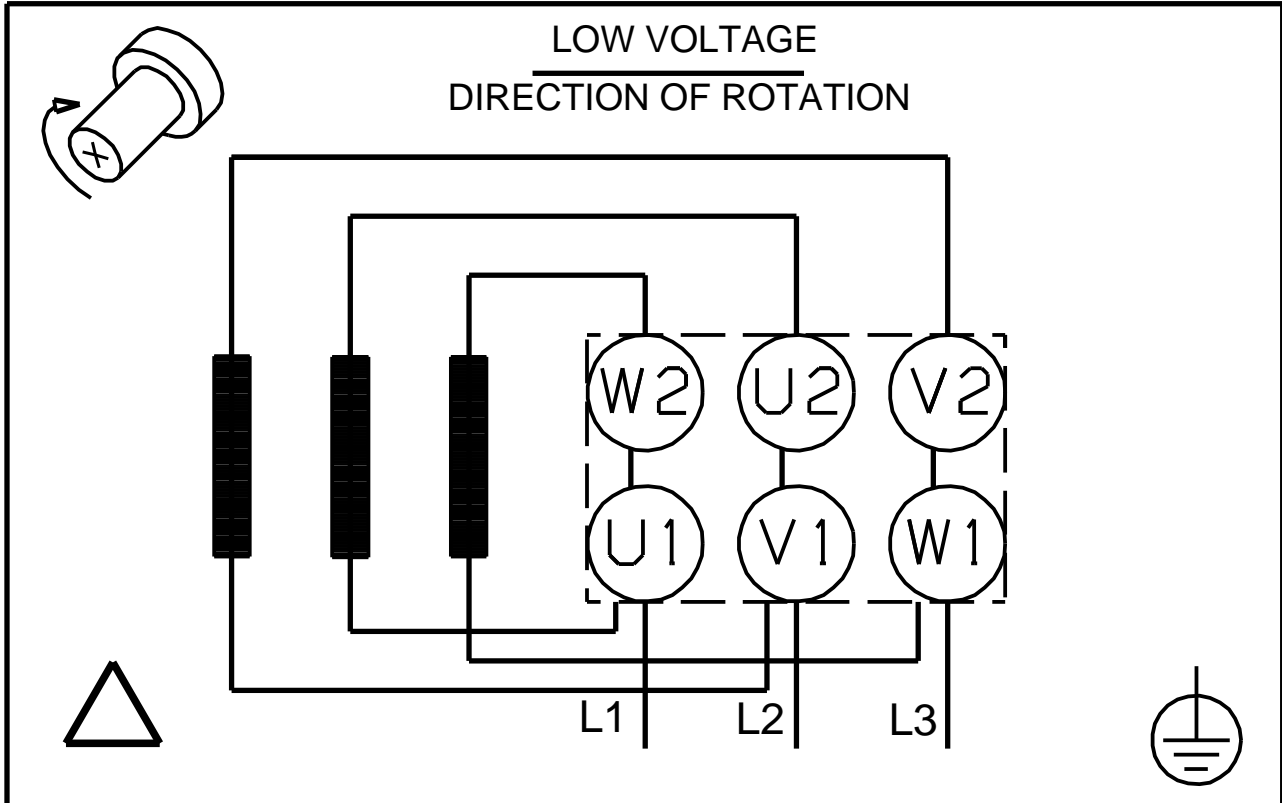
Description	Value
Enclosure class (IEC 34-5):	55 Dust/Jetting
Insulation class (IEC 85):	F
Motor protec:	NONE
Motor No:	85U01906
<b>Others:</b>	
Minimum efficiency index, MEI %:	0.7
Net weight:	31.1 kg
Gross weight:	36.1 kg

## 96100309 CRT 2-13 A-P-A-E-AUUE 50 Hz



Note! All units are in [mm] unless others are stated.  
Disclaimer: This simplified dimensional drawing does not show all details.

**96100309 CRT 2-13 A-P-A-E-AUUE 50 Hz**



Note! All units are in [mm] unless others are stated.