
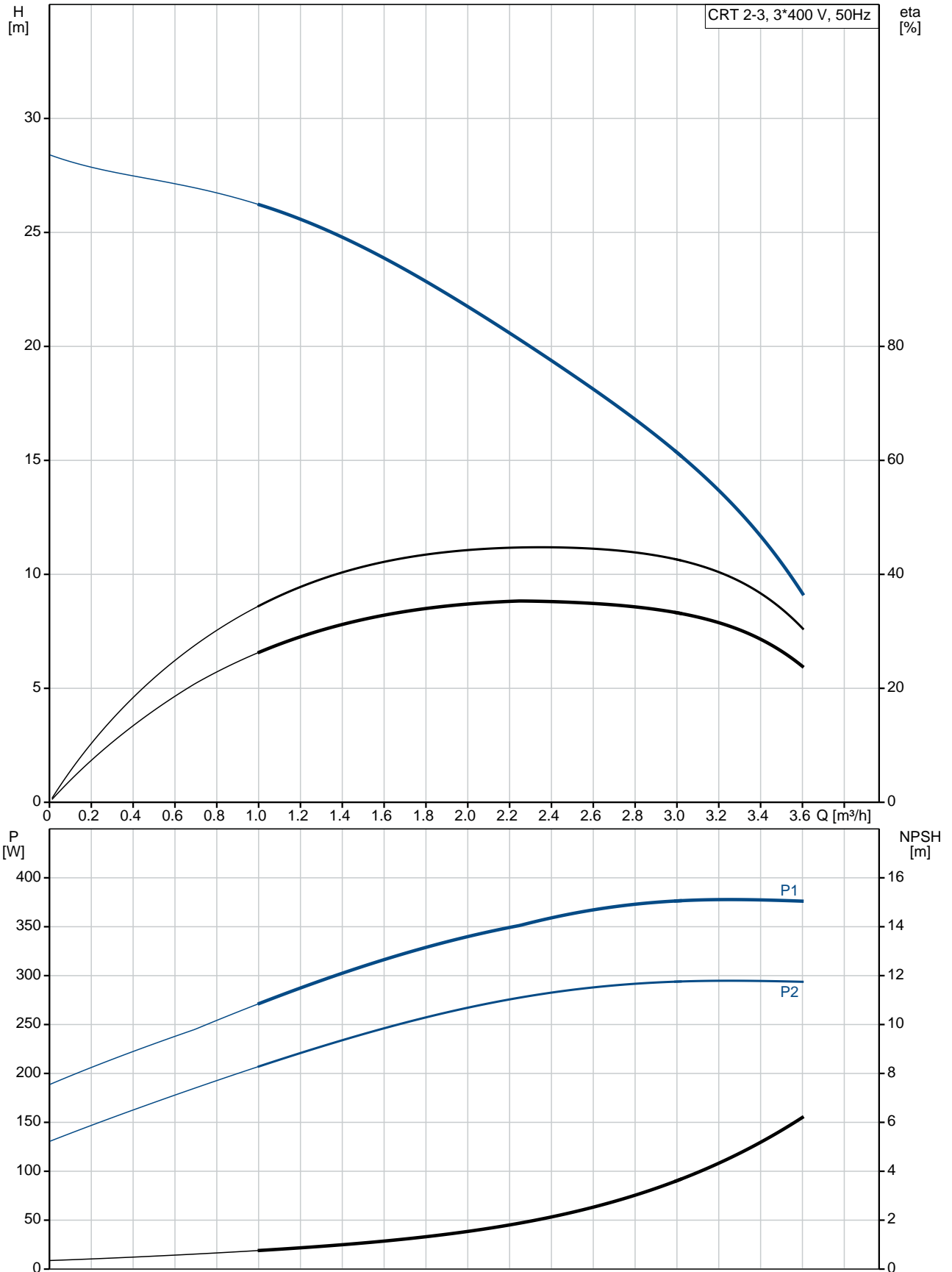


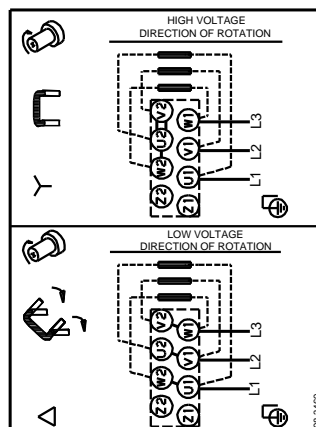
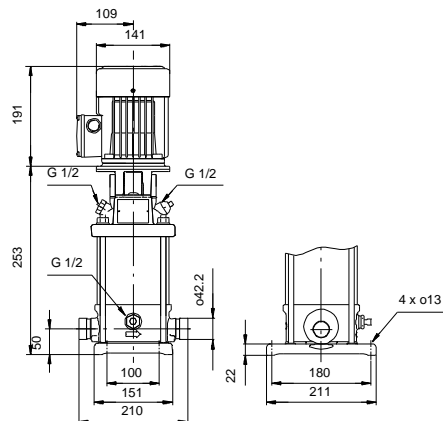
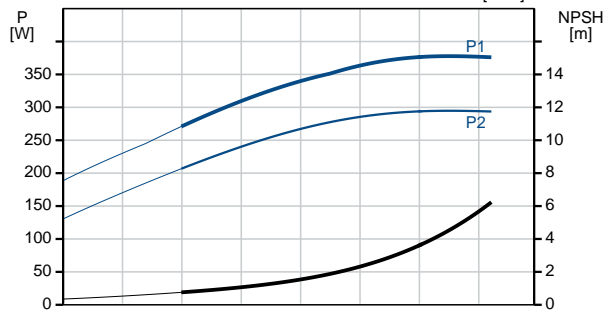
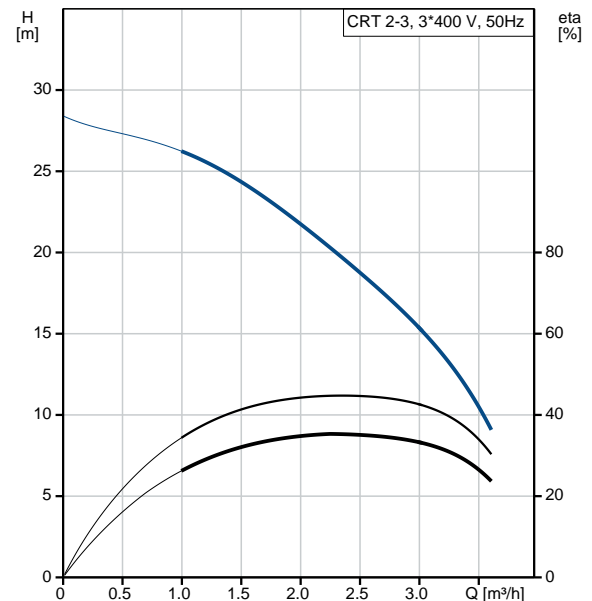
| Qty. | Description |
|------|--|
| 1 | <p data-bbox="199 338 478 369">CRT 2-3 A-P-A-E-AUUE</p>  <p data-bbox="199 660 470 689">Product No.: 96100302</p> <p data-bbox="199 689 726 779">Vertical, non-self-priming, multistage, in-line, centrifugal pump for installation in pipe systems and mounting on a foundation.</p> <p data-bbox="199 808 678 837">The pump has the following characteristics:</p> <ul data-bbox="236 837 758 866" style="list-style-type: none"> - Impellers, intermediate chambers and outer <p data-bbox="199 866 885 896">Impeller: sleeve are made of Titanium.</p> <p data-bbox="199 896 1133 925">Pump housing: - Pump head cover and base are made of Titanium.</p> <ul data-bbox="236 925 670 954" style="list-style-type: none"> - The shaft seal has assembly length <p data-bbox="199 954 462 983">according to EN 12756.</p> <ul data-bbox="236 983 710 1048" style="list-style-type: none"> - Power transmission is via cast iron split coupling. <p data-bbox="199 1048 925 1113">Flange standard: - Pipework connection is via PJE flanges/couplings.</p> <p data-bbox="199 1135 941 1164">Phase: The motor is a 3-phase AC motor.</p> <p data-bbox="199 1193 279 1223">Liquid:</p> <p data-bbox="199 1223 630 1252">Pumped liquid: Water</p> <p data-bbox="199 1252 710 1281">Liquid temperature range: -20 .. 120 °C</p> <p data-bbox="199 1281 630 1310">Selected liquid temperature: 20 °C</p> <p data-bbox="199 1310 694 1339">Density: 998.2 kg/m³</p> <p data-bbox="199 1370 319 1400">Technical:</p> <p data-bbox="199 1400 821 1429">Pump speed on which pump data are based: 2900 rpm</p> <p data-bbox="199 1429 662 1458">Rated flow: 2.5 m³/h</p> <p data-bbox="199 1458 646 1487">Rated head: 18.6 m</p> <p data-bbox="199 1487 630 1516">Primary shaft seal: AUUE</p> <p data-bbox="199 1516 646 1545">Approvals on nameplate: CE,TR</p> <p data-bbox="199 1545 766 1574">Curve tolerance: ISO9906:2012 3B</p> <p data-bbox="199 1606 311 1635">Materials:</p> <p data-bbox="199 1635 710 1700">Pump housing: Titanium ASTM B 265</p> <p data-bbox="199 1700 710 1765">Impeller: Titanium ASTM B 265</p> <p data-bbox="199 1765 638 1794">Bush material: NONE</p> <p data-bbox="199 1825 327 1854">Installation:</p> <p data-bbox="199 1854 630 1883">Maximum ambient temperature: 40 °C</p> <p data-bbox="199 1883 734 1946">Max pressure at stated temp: 25 bar / 120 °C 25 bar / -20 °C</p> <p data-bbox="199 1946 614 1975">Flange standard: PJE</p> <p data-bbox="199 1975 662 2004">Pipe connection: 42,4 mm</p> <p data-bbox="199 2004 630 2033">Flange size for motor: FT85</p> <p data-bbox="199 2065 367 2094">Electrical data:</p> |

| Qty. | Description |
|------|--|
| | Motor type: 71A |
| | IE Efficiency class: IE3 |
| | Rated power - P2: 0.37 kW |
| | Power (P2) required by pump: 0.37 kW |
| | 0.37 kW |
| | Mains frequency: 50 Hz |
| | Rated voltage: 3 x 220-240D/380-415Y V |
| | Rated current: 1.74/1.00 A |
| | Starting current: 490-530 % |
| | Cos phi - power factor: 0.80-0.70 |
| | Rated speed: 2850-2880 rpm |
| | Efficiency: IE3 73,8% |
| | Motor efficiency at full load: 73.8 % |
| | Motor efficiency at 3/4 load: 79.0 % |
| | Motor efficiency at 1/2 load: 75.5 % |
| | Number of poles: 2 |
| | Enclosure class (IEC 34-5): 55 Dust/Jetting |
| | Insulation class (IEC 85): F |
| | Motor No: 85805102 |
| | Others: |
| | Minimum efficiency index, MEI $\hat{\alpha}\%$: 0.7 |
| | Net weight: 15 kg |
| | Gross weight: 20 kg |

96100302 CRT 2-3 A-P-A-E-AUUE 50 Hz



| Description | Value |
|--|----------------------------|
| General information: | |
| Product name: | CRT 2-3 A-P-A-E-AUUE |
| Product No: | 96100302 |
| EAN number: | 5700395842500 |
| Price: | |
| Technical: | |
| Pump speed on which pump data are based: | 2900 rpm |
| Rated flow: | 2.5 m ³ /h |
| Rated head: | 18.6 m |
| Maximum head: | 27.9 m |
| Head max: | 27.9 m |
| Stages: | 3 |
| Impellers: | 3 |
| Primary shaft seal: | AUUE |
| Approvals on nameplate: | CE, TR |
| Curve tolerance: | ISO9906:2012 3B |
| Pump version: | A |
| Model: | A |
| Materials: | |
| Pump housing: | Titanium |
| Pump housing: | ASTM B 265 |
| Impeller: | Titanium |
| Impeller: | ASTM B 265 |
| Material code: | A |
| Code for rubber: | E |
| Bush material: | NONE |
| Installation: | |
| Maximum ambient temperature: | 40 °C |
| Max pressure at stated temp: | 25 bar / 120 °C |
| Max pressure at stated temp: | 25 bar / -20 °C |
| Flange standard: | PJE |
| Pipe connection: | 42,4 mm |
| Flange size for motor: | FT85 |
| Connect code: | P |
| Liquid: | |
| Pumped liquid: | Water |
| Liquid temperature range: | -20 .. 120 °C |
| Selected liquid temperature: | 20 °C |
| Density: | 998.2 kg/m ³ |
| Electrical data: | |
| Motor type: | 71A |
| IE Efficiency class: | IE3 |
| Rated power - P2: | 0.37 kW |
| Power (P2) required by pump: | 0.37 kW |
| Power (P2) required by pump: | 0.37 kW |
| Mains frequency: | 50 Hz |
| Rated voltage: | 3 x 220-240D/380-415Y V |
| Rated current: | 1.74/1.00 A |
| Starting current: | 490-530 % |
| Cos phi - power factor: | 0.80-0.70 |
| Rated speed: | 2850-2880 rpm |
| Efficiency: | IE3 73,8% |
| Motor efficiency at full load: | 73.8 % |
| Motor efficiency at 3/4 load: | 79.0 % |
| Motor efficiency at 1/2 load: | 75.5 % |
| Number of poles: | 2 |





Company name:

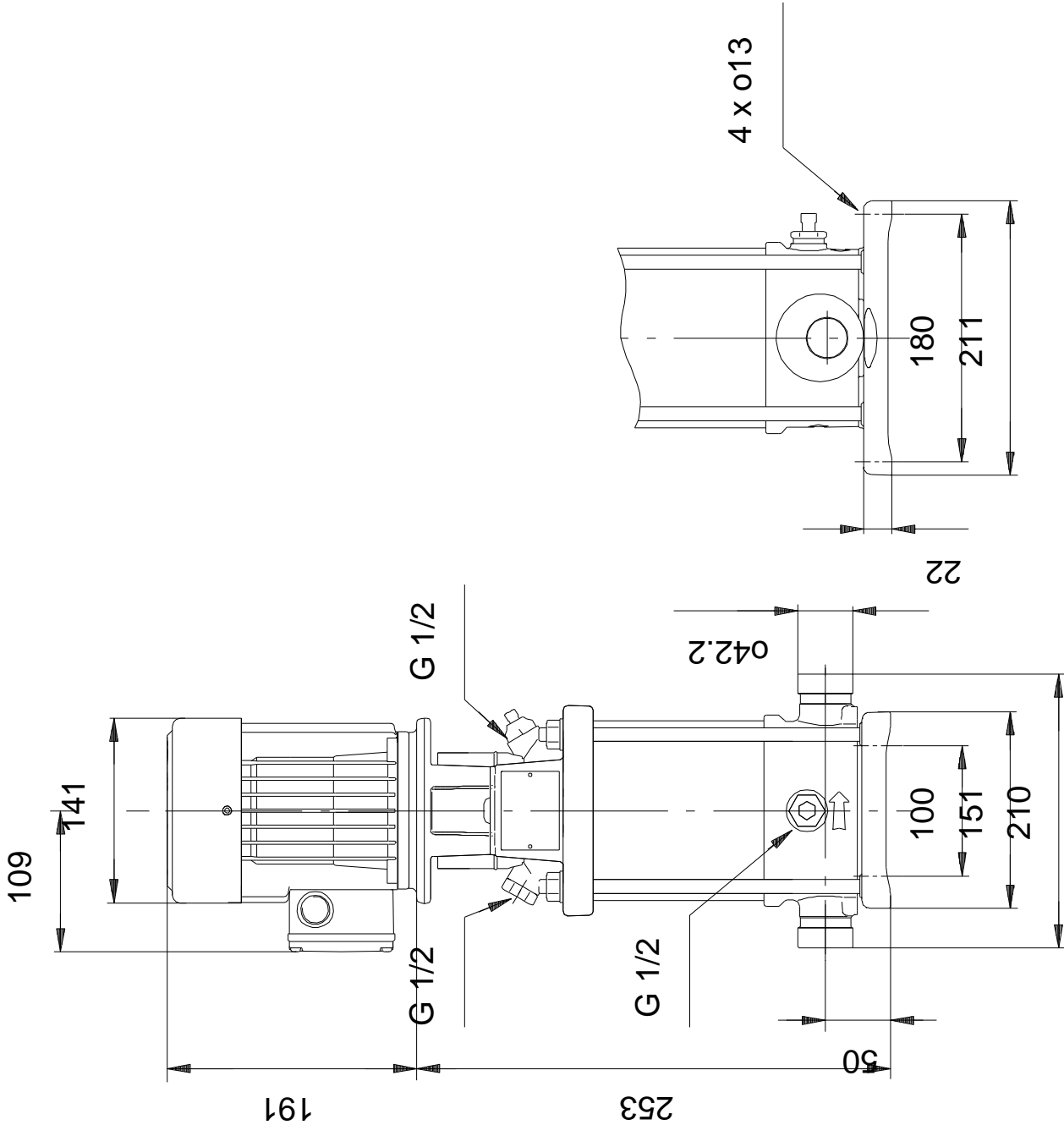
Created by:

Phone:

Date: 19/01/2021

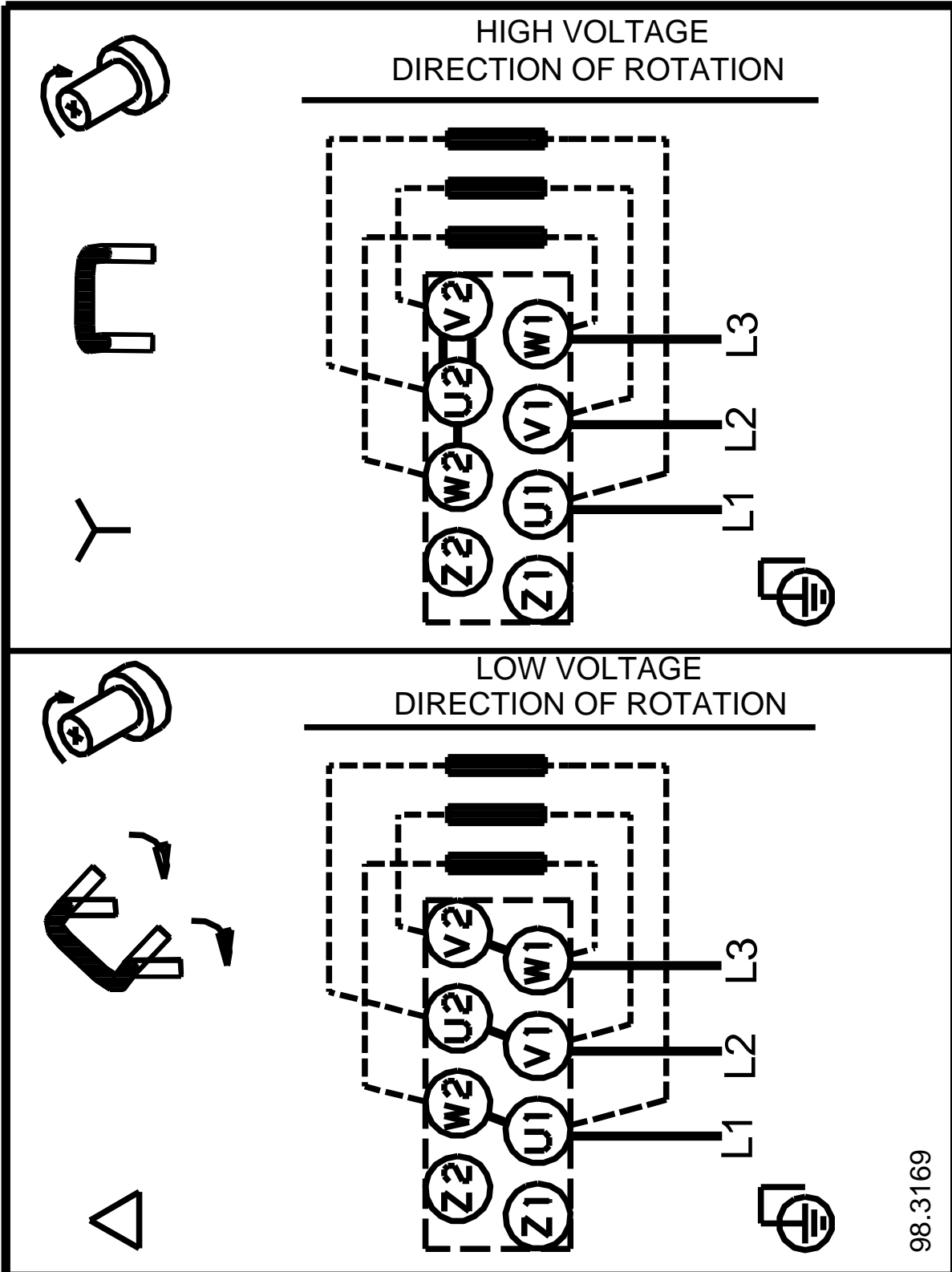
| Description | Value |
|----------------------------------|-----------------|
| Enclosure class (IEC 34-5): | 55 Dust/Jetting |
| Insulation class (IEC 85): | F |
| Motor protec: | NONE |
| Motor No: | 85805102 |
| Others: | |
| Minimum efficiency index, MEI %: | 0.7 |
| Net weight: | 15 kg |
| Gross weight: | 20 kg |

96100302 CRT 2-3 A-P-A-E-AUUE 50 Hz



Note! All units are in [mm] unless others are stated.
Disclaimer: This simplified dimensional drawing does not show all details.

96100302 CRT 2-3 A-P-A-E-AUUE 50 Hz



98.3169

Note! All units are in [mm] unless others are stated.