
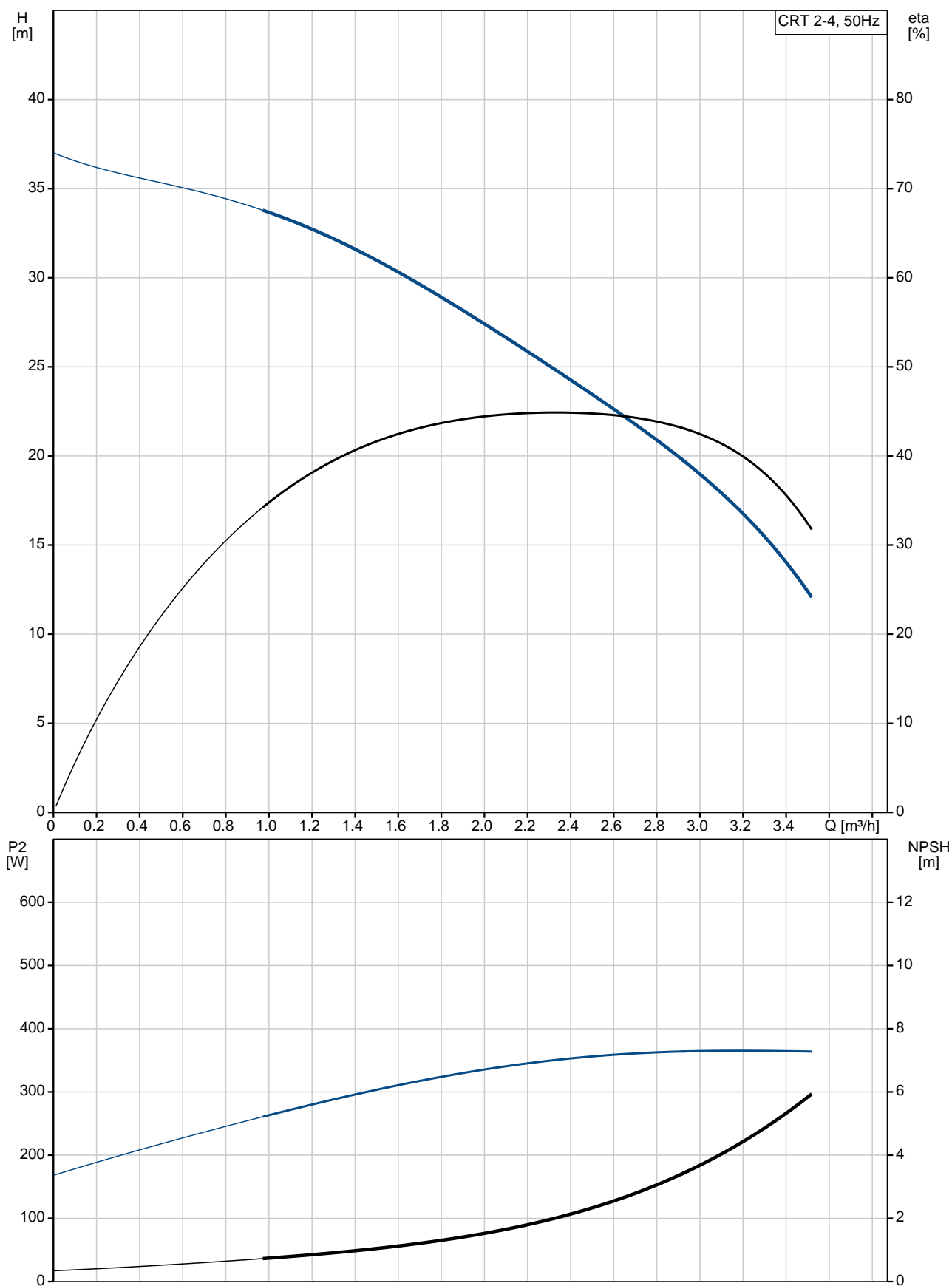


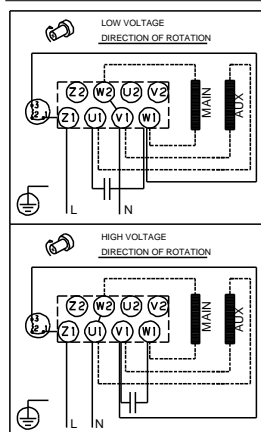
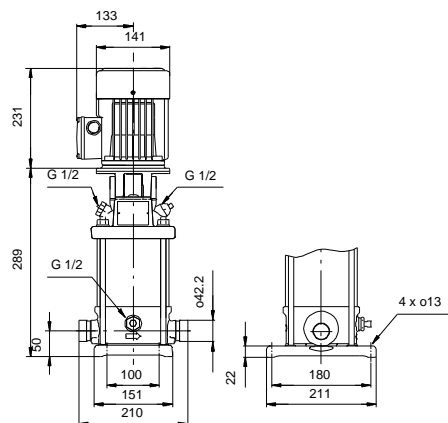
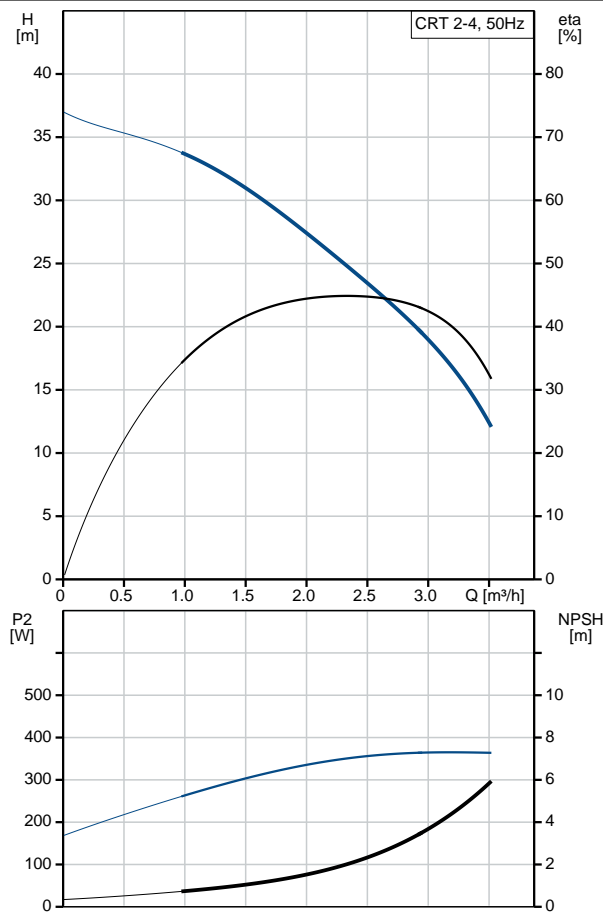
Qty.	Description
1	<p>CRT 2-4 A-P-A-E-AUUE</p>  <p>Product No.: 96100267 Vertical, non-self-priming, multistage, in-line, centrifugal pump for installation in pipe systems and mounting on a foundation.</p> <p>The pump has the following characteristics:</p> <ul style="list-style-type: none"> - Impellers, intermediate chambers and outer Impeller: sleeve are made of Titanium. - Pump housing: - Pump head cover and base are made of Titanium. - The shaft seal has assembly length according to EN 12756. - Power transmission is via cast iron split coupling. <p>Flange standard: - Pipework connection is via PJE flanges/couplings.</p> <p>Phase: The motor is a 1-phase AC motor.</p> <p>Liquid: Pumped liquid: Water Liquid temperature range: -20 .. 120 °C Selected liquid temperature: 20 °C Density: 998.2 kg/m³</p> <p>Technical: Pump speed on which pump data are based: 2900 rpm Rated flow: 2.5 m³/h Rated head: 25.2 m Primary shaft seal: AUUE Approvals on nameplate: CE,TR Curve tolerance: ISO9906:2012 3B</p> <p>Materials: Pump housing: Titanium ASTM B 265 Impeller: Titanium ASTM B 265 Bush material: NONE</p> <p>Installation: Maximum ambient temperature: 40 °C Max pressure at stated temp: 25 bar / 120 °C 25 bar / -20 °C Flange standard: PJE Pipe connection: 42,4 mm Flange size for motor: FT100</p> <p>Electrical data:</p>

Qty.	Description
	<p>Motor type: 80A</p> <p>Rated power - P2: 0.55 kW</p> <p>Power (P2) required by pump: 0.55 kW</p> <p>0.55 kW</p> <p>Mains frequency: 50 Hz</p> <p>Rated voltage: 1 x 220-230/240 V</p> <p>Rated current: 4.00/3.65 A</p> <p>Starting current: 280 %</p> <p>Cos phi - power factor: 0.99</p> <p>Rated speed: 2750 rpm</p> <p>Motor efficiency at full load: 66-64 %</p> <p>Number of poles: 2</p> <p>Enclosure class (IEC 34-5): 55 Dust/Jetting</p> <p>Insulation class (IEC 85): F</p> <p>Motor No: 85215103</p> <p>Others:</p> <p>Minimum efficiency index, MEI $\eta_{\%}$: 0.7</p> <p>Net weight: 17 kg</p> <p>Gross weight: 22 kg</p>

96100267 CRT 2-4 A-P-A-E-AUUE 50 Hz



Description	Value
General information:	
Product name:	CRT 2-4 A-P-A-E-AUUE
Product No:	96100267
EAN number:	5700395841459
Price:	
Technical:	
Pump speed on which pump data are based:	2900 rpm
Rated flow:	2.5 m³/h
Rated head:	25.2 m
Maximum head:	37.5 m
Head max:	37.5 m
Stages:	5
Impellers:	4
Primary shaft seal:	AUUE
Approvals on nameplate:	CE, TR
Curve tolerance:	ISO9906:2012 3B
Pump version:	A
Model:	A
Materials:	
Pump housing:	Titanium
Pump housing:	ASTM B 265
Impeller:	Titanium
Impeller:	ASTM B 265
Material code:	A
Code for rubber:	E
Bush material:	NONE
Installation:	
Maximum ambient temperature:	40 °C
Max pressure at stated temp:	25 bar / 120 °C
Max pressure at stated temp:	25 bar / -20 °C
Flange standard:	PJE
Pipe connection:	42,4 mm
Flange size for motor:	FT100
Connect code:	P
Liquid:	
Pumped liquid:	Water
Liquid temperature range:	-20 .. 120 °C
Selected liquid temperature:	20 °C
Density:	998.2 kg/m³
Electrical data:	
Motor type:	80A
Rated power - P2:	0.55 kW
Power (P2) required by pump:	0.55 kW
Power (P2) required by pump:	0.55 kW
Mains frequency:	50 Hz
Rated voltage:	1 x 220-230/240 V
Rated current:	4.00/3.65 A
Starting current:	280 %
Cos phi - power factor:	0.99
Rated speed:	2750 rpm
Motor efficiency at full load:	66-64 %
Number of poles:	2
Enclosure class (IEC 34-5):	55 Dust/Jetting
Insulation class (IEC 85):	F
Motor protec:	PTO
Motor No:	85215103
Others:	





Company name:

Created by:

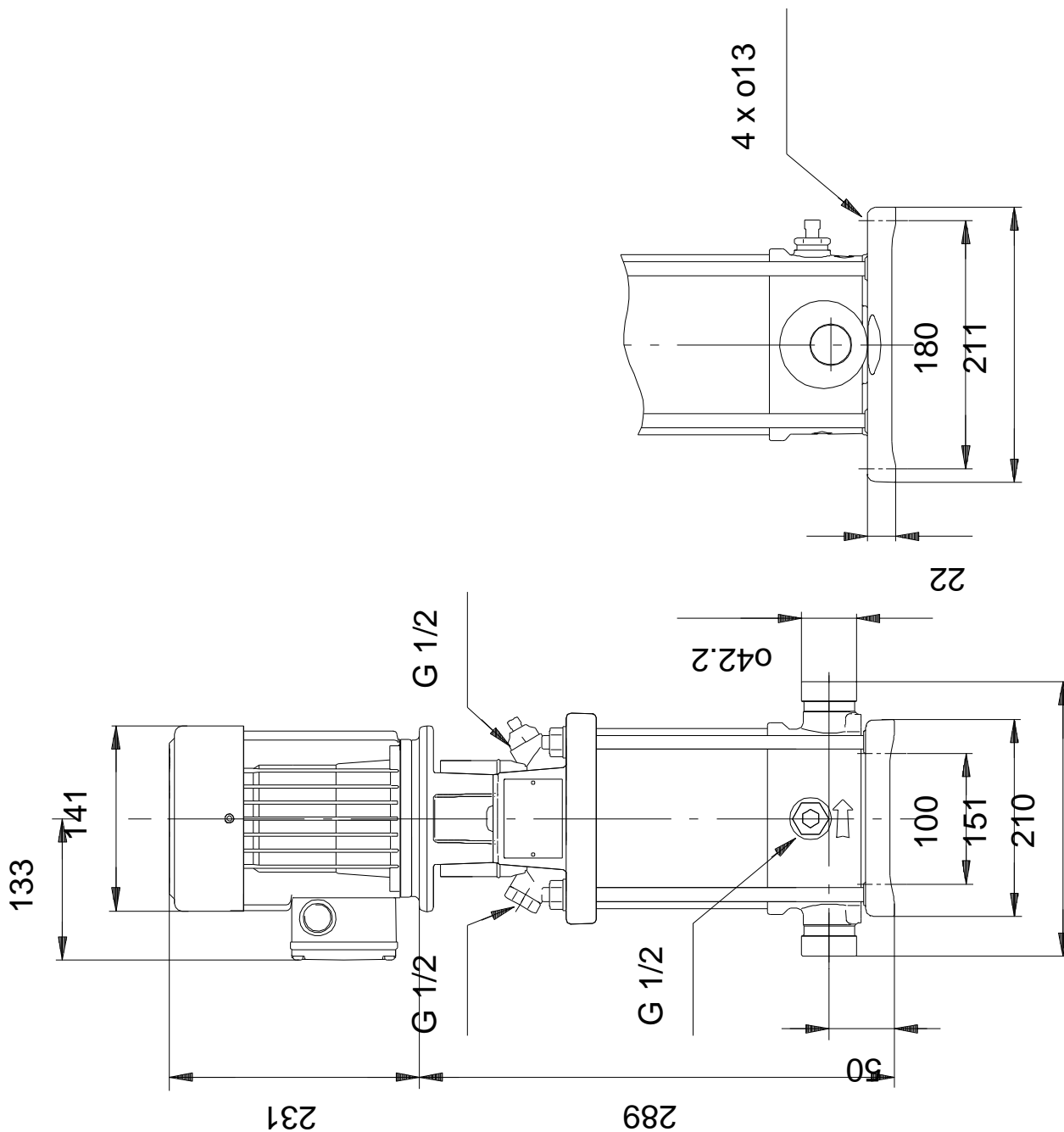
Phone:

Date:

19/01/2021

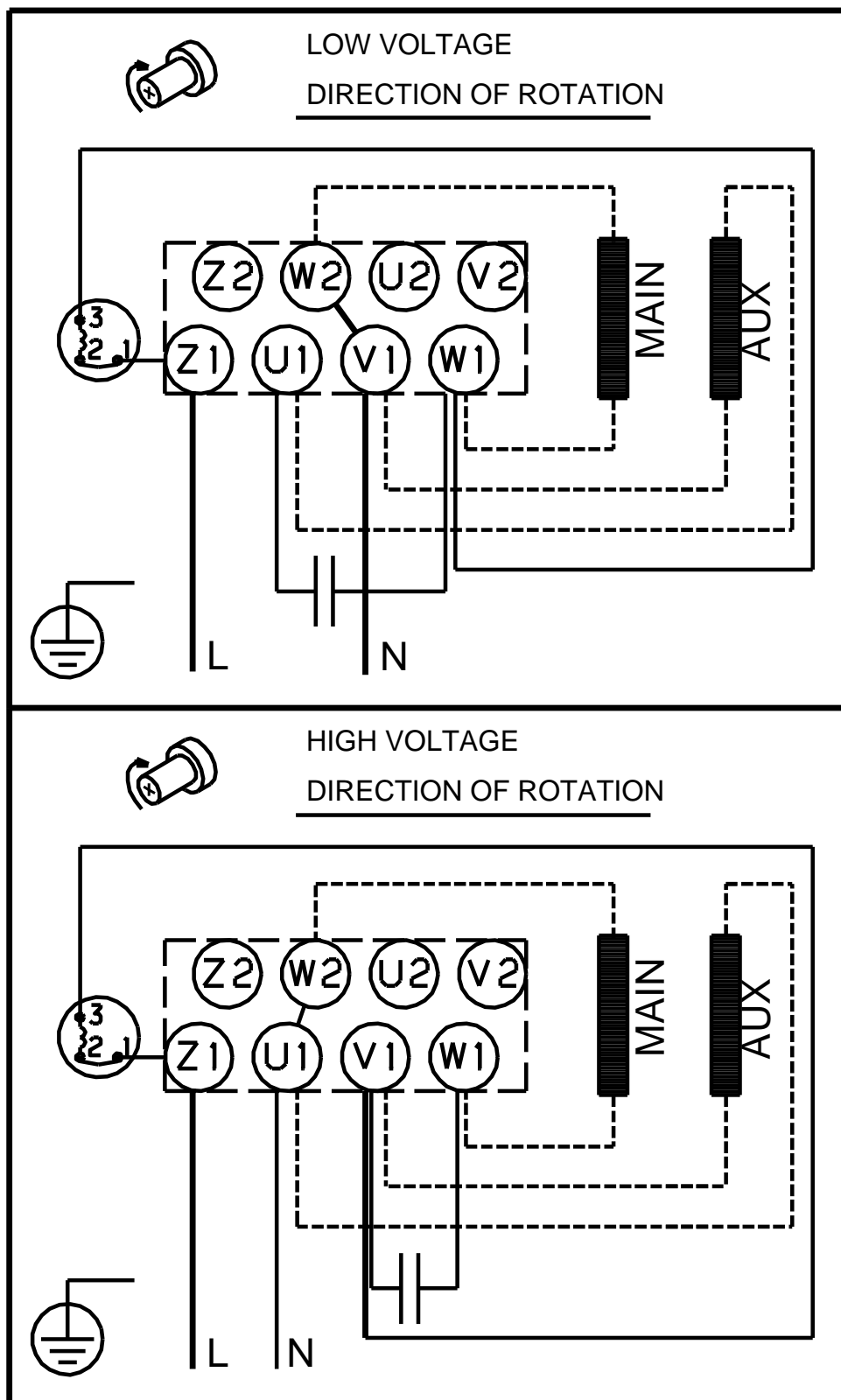
Description	Value
Minimum efficiency index, MEI â%¥:	0.7
Net weight:	17 kg
Gross weight:	22 kg

96100267 CRT 2-4 A-P-A-E-AUUE 50 Hz



Note! All units are in [mm] unless others are stated.
Disclaimer: This simplified dimensional drawing does not show all details.

96100267 CRT 2-4 A-P-A-E-AUUE 50 Hz



Note! All units are in [mm] unless others are stated.