

## Data sheet: TOP-Z 25/6 (3~400 V, PN 10, Inox)

### Hydraulic data

Maximum operating pressure $P_N$	10 bar
Delivery head for $Q_{min}$ $H_{Q_{min}}$	6.1 m
Max. volume flow $Q_{max}$	5.7 m <sup>3</sup> /h
Min. fluid temperature for HVAC applications $T_{min}$	-20 °C
Max. fluid temperature for HVAC applications $T_{max}$	110 °C
Min. fluid temperature for drinking water applications $T_{min}$	0
Max. fluid temperature for drinking water applications $T_{max}$	65
Max. fluid temperature for drinking water applications in short-time duty (2 hours) $T_{max}$	80 °C
Min. ambient temperature $T_{min}$	0 °C
Max. ambient temperature $T_{max}$	40 °C
Max. permitted total water hardness	3.57 mmol/l (20°dH) (3.21 mmol/l (18°dH) for 20/4 + 25/6)

### Materials

Pump housing	Stainless steel
Impeller	PPE-GF30
Shaft	Oxide ceramic
Bearing	Carbon, synthetic resin-impregnated

### Information for order placements

Brand	Wilo
Product description	TOP-Z 25/6 (3~400 V, PN 10, Inox)
EAN number	4016322652793
Article number	2045522
Net weight, approx. $m$	3 kg
Gross weight, approx. $m$	4.1 kg
Length with packaging	270 mm
Height with packaging	215 mm
Width with packaging	178 mm
Packaging property	Transport packaging
Packaging type	Cardboard box
Minimum order quantity	1

### Motor data

Mains connection	3~400 V, 50 Hz
Rated power $P_2$	100.0 W
Rated current $I_N$	0.45 A
Max. speed $n_{max}$	2450 1/min
Power consumption $P_{1 min}$	60.0 W
Power consumption $P_{1 max}$	210.0 W
Emitted interference	EN 61000-6-3
Interference resistance	EN 61000-6-2
Protection class motor	IPX4D
Insulation class	H
Threaded cable connection	1 x PG13.5
Motor protection	Impedance protection WSK

### Installation dimensions

Pipe connection on the suction side $D_Ns$	G 1½
Pipe connection on the pressure side $D_Nd$	G 1½
Port-to-port length $L_0$	180 mm

## Tender text: TOP-Z 25/6 (3~400 V, PN 10, Inox)

This circulator is suitable only for drinking water.

Can be used for domestic hot water circulation systems in the industry and building services.

Maintenance-free glandless circulator with threaded or flange connection, pre-selectable speed stages for power adjustment.

### Equipment and function

- Manual power adjustment with 3 speed stages
- Pumps with 1- motor:
  - P2 up to 90 W: internal protection against unacceptably high winding temperatures
  - P2 = 180 W: Full motor protection with thermal winding contacts in conjunction with tripping unit
- Pumps with 3- motor:
  - P2 up to 90 W: internal protection against unacceptably high winding temperatures
  - P2 ≥ 180 W: Full motor protection with integrated trip electronics
- Fault signal light
- Contact for collective fault signal
- Direction of rotation signal lamp
- Mains connection 3~, 230 V with optional switching plug
- Pump housing in red brass or grey cast iron (stainless steel depending on type)
- PN 6/PN 10 combination flange (for DN 40 to DN 65)
- Thermal insulation shells
- Additional functions by retrofittable Protect Module C:
  - SSM fault signal as potential-free NC contact
  - SBM run signal as potential-free NO contact
  - "Overriding Off" control input via external potential-free contact (NC contact)
  - Blocking detection
  - Full motor protection with tripping unit
  - Fault acknowledgement
- Dual pump management (two single pumps installed in parallel) Main/standby operation (automatic fault-actuated switchover/time-sensitive pump alteration)

### Operating data

Fluid media	Water
Fluid temperature $T$	-20 °C
Ambient temperature $T$	0 °C
Maximum operating pressure $P_N$	10 bar
Max. permitted total water hardness	3.57 mmol/l (20°dH) (3.21 mmol/l (18°dH) for 20/4 + 25/6)

### Materials

Pump housing	Stainless steel
Impeller	PPE-GF30
Shaft	Oxide ceramic
Bearing	Carbon, synthetic resin-impregnated

### Information for order placements

Brand	Wilo
Product description	TOP-Z 25/6 (3~400 V, PN 10, Inox)
Net weight, approx. $m$	3 kg
Article number	2045522

### Motor data

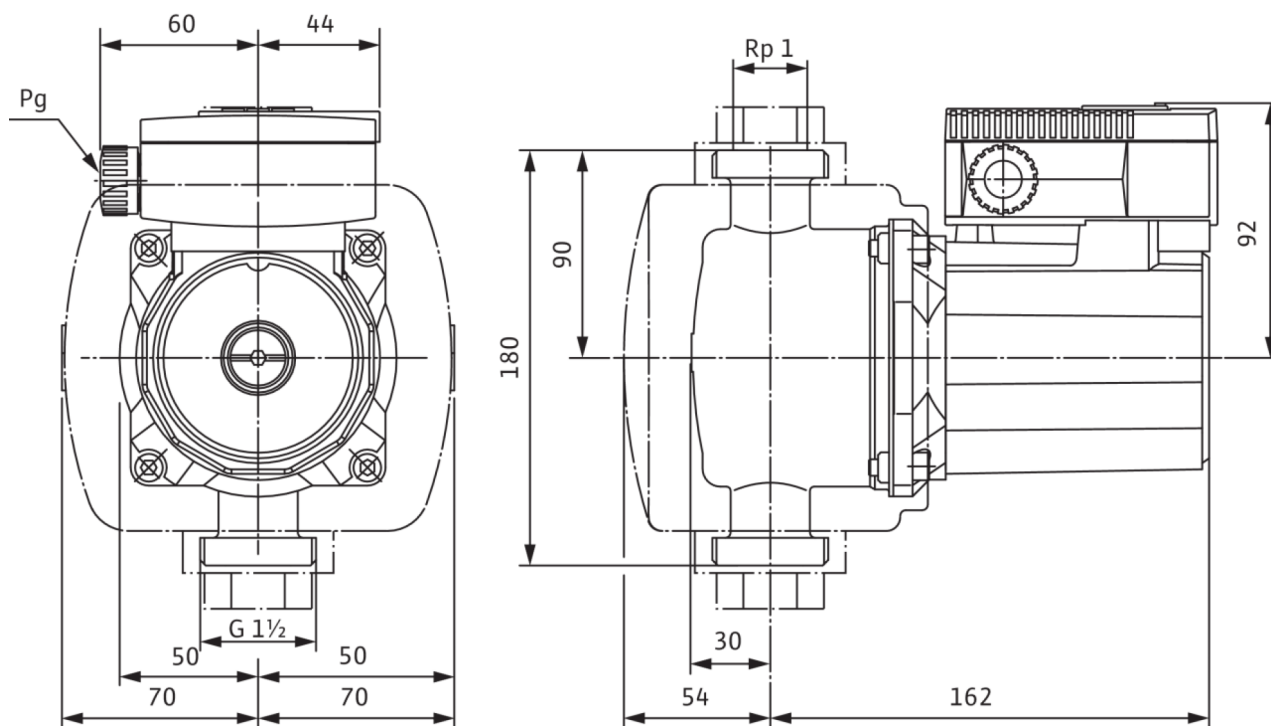
Emitted interference	EN 61000-6-3
Interference resistance	EN 61000-6-2
Mains connection	3~400 V, 50 Hz
Power consumption $P_{1\max}$	210.0 W
Max. speed $n_{\max}$	2450 1/min
Rated current $I_N$	0.45 A
Protection class motor	IPX4D
Threaded cable connection	1 x PG13.5

### Installation dimensions

Pipe connection on the suction side $DN_s$	G 1½
Pipe connection on the pressure side $DN_d$	G 1½
Port-to-port length $L_0$	180 mm

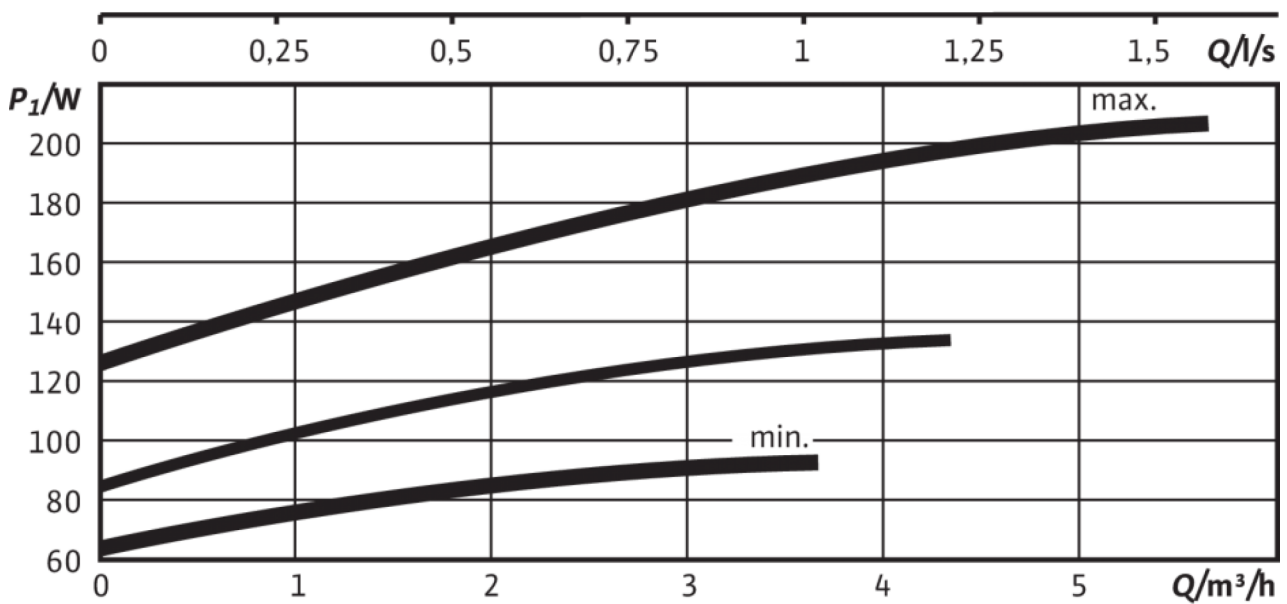
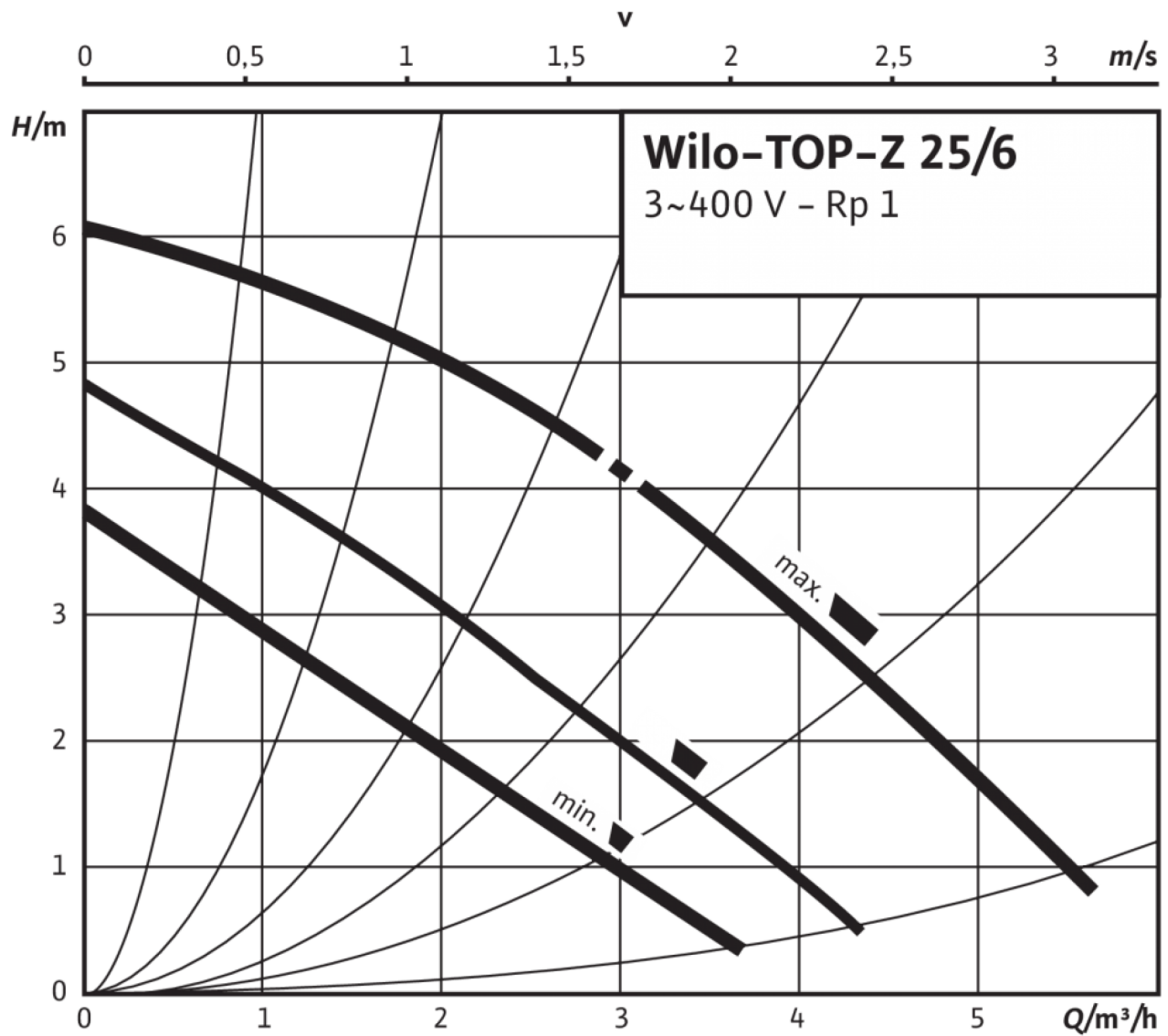
**Dimensions and dimensions drawings: TOP-Z 25/6 (3~400 V, PN 10, Inox)**

TOP-Z



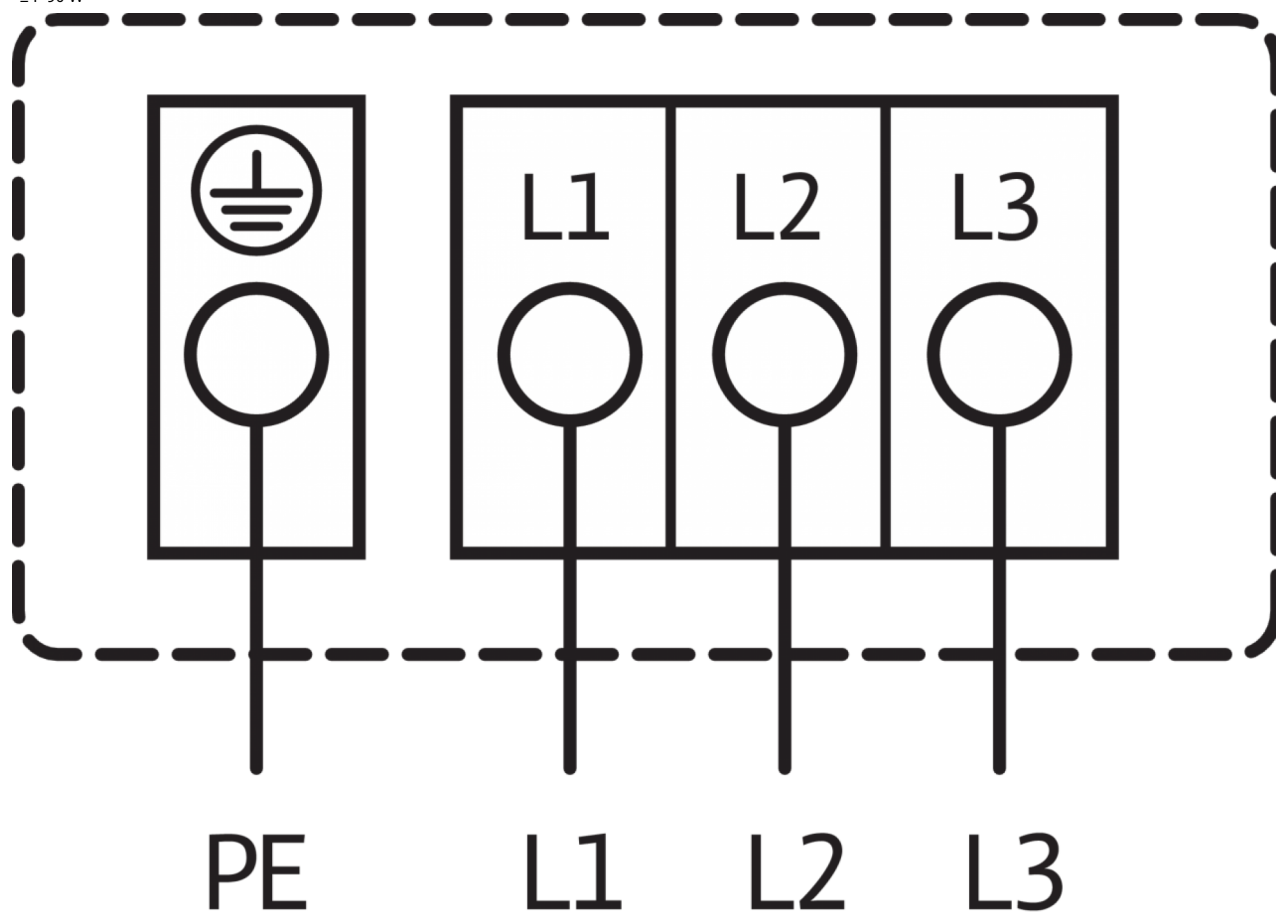
### Pump curves: TOP-Z 25/6 (3~400 V, PN 10, Inox)

TOP-Z 25/6, 3~



Wiring diagram: TOP-Z 25/6 (3~400 V, PN 10, Inox)

≤ P 90 W



**Mains connection** 3~400 V, 50 Hz

3~230 V, 50 Hz (with optional switching plug 3~230 V)

internal protection against unacceptably high winding temperatures

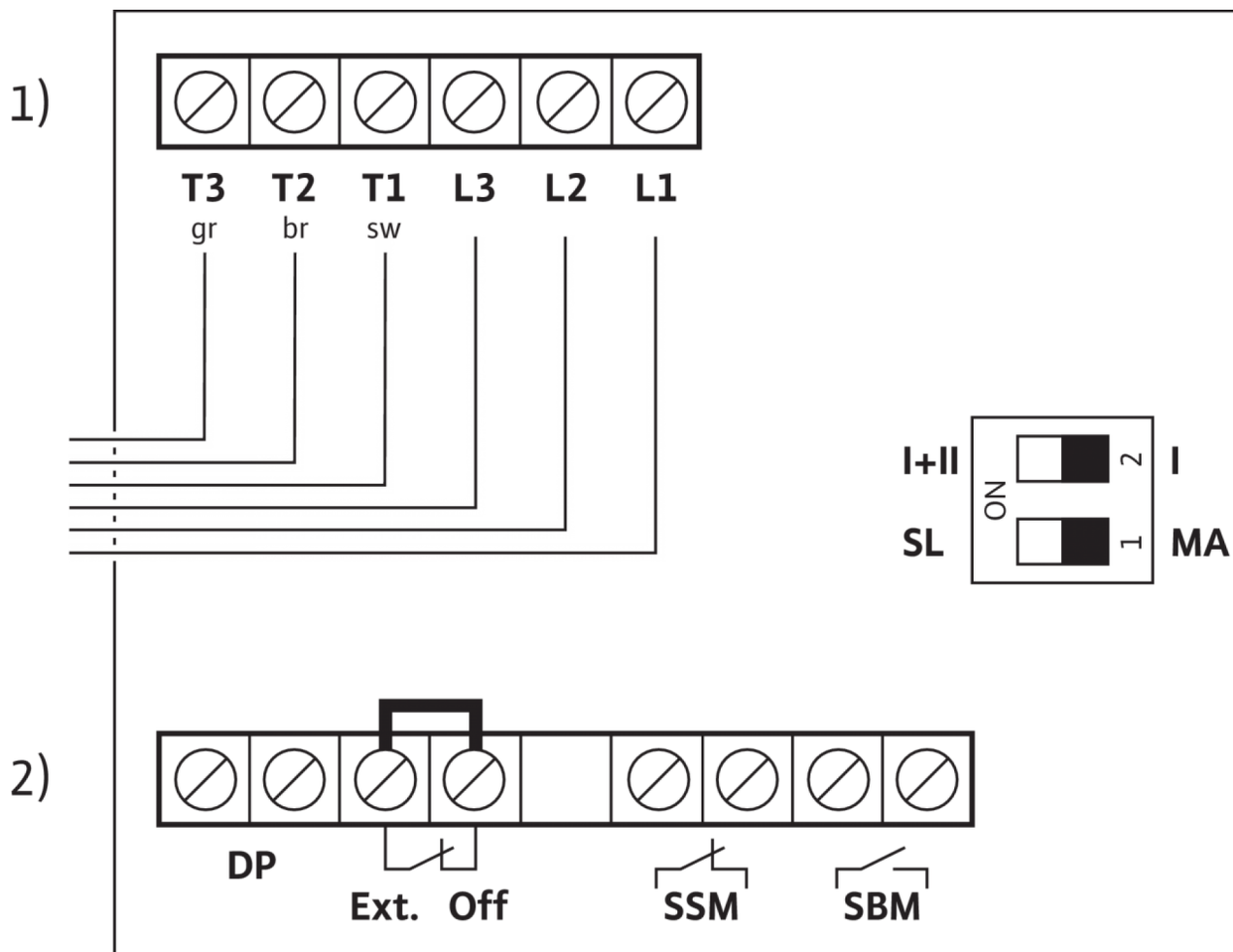
Triggering: Internal interruption of a motor phase

Reset: Disconnect mains voltage, allow motor to cool down,

switch mains voltage back on again

## Wiring diagram: TOP-Z 25/6 (3~400 V, PN 10, Inox)

Protect-Modul



1) Mains terminals

2) Control terminals