
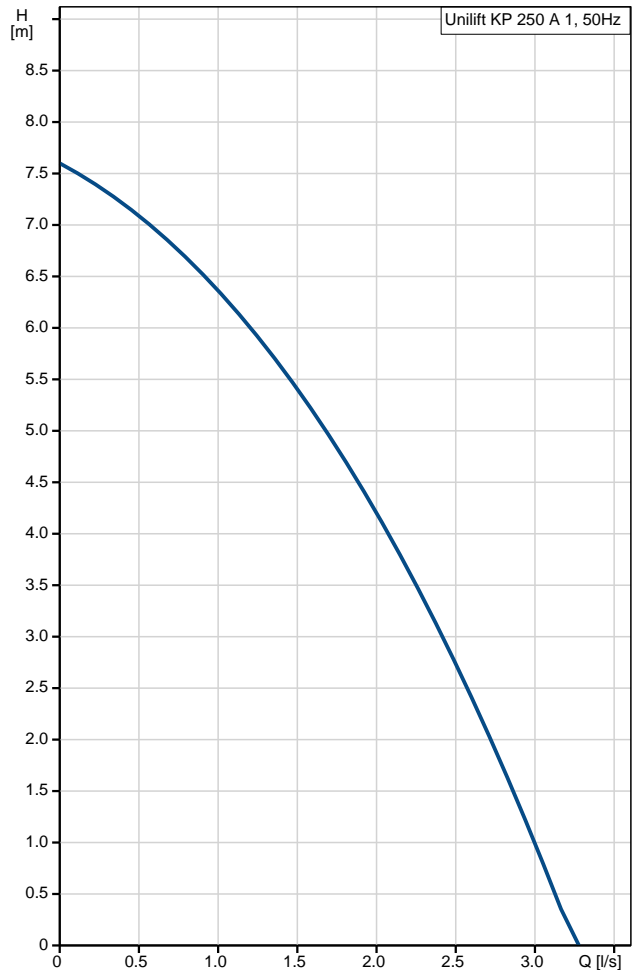


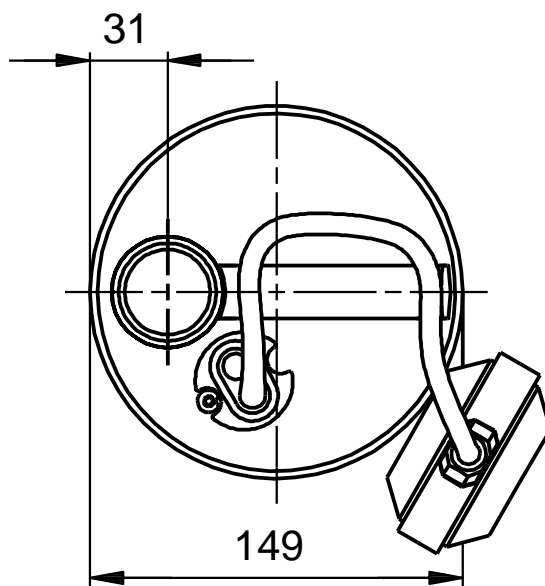
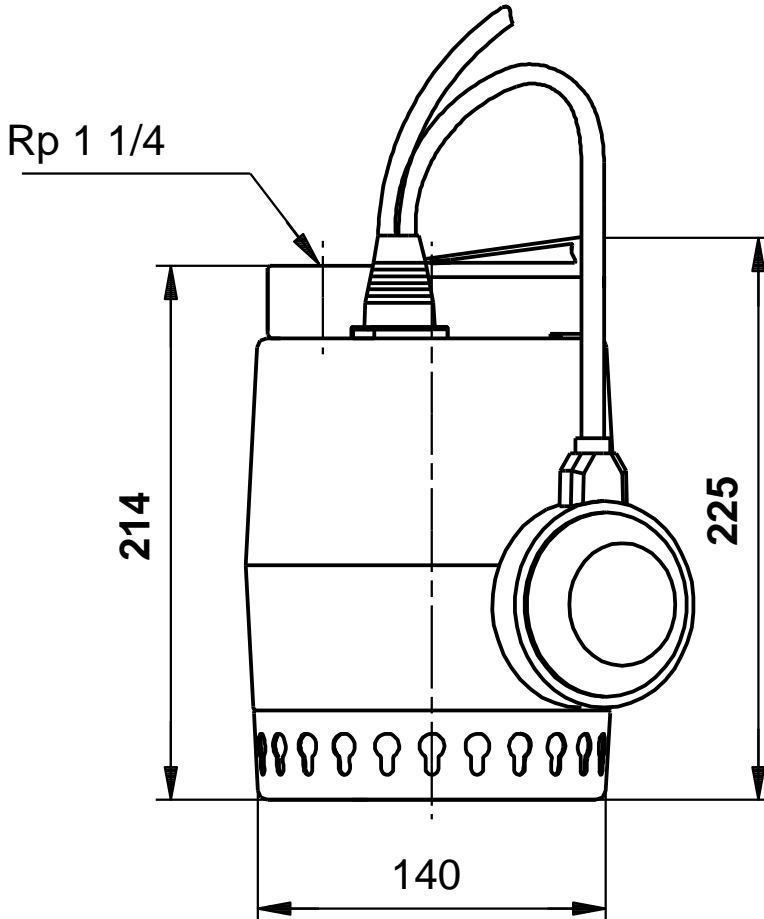
Position	Qty.	Description
	1	<p data-bbox="320 340 526 369">Unilift KP 250 A 1</p> <div data-bbox="435 409 592 752" style="text-align: center;">  </div> <p data-bbox="710 770 1193 795" style="text-align: center;">Note! Product picture may differ from actual product</p> <p data-bbox="320 801 632 862">Product No.: 012C6700 Submersible drainage pump</p> <p data-bbox="320 891 849 1037">Vertical single-stage stainless steel submersible pump with vertical discharge port and integrated submersible 1-phase canned motor in insulation class F with thermal overload protection.</p> <p data-bbox="320 1070 837 1187">The pump is fitted with suction strainer and a carrying handle and is supplied with a 5 m mains cable and float switch for automatic start and stop.</p> <p data-bbox="320 1220 845 1305">The impeller is a semi-open impeller for 10 mm free passage suitable for pumping groundwater, surface water, rain water and similar liquids.</p> <p data-bbox="320 1339 841 1395">The pump has a double shaft seal consisting of two lip seals with grease in-between.</p> <p data-bbox="320 1429 885 1545">The pump has an outer casing ensuring continuous cooling of the motor by the pumped liquid. The rotor shaft operates in two maintenance-free carbon bearings cooled by the pumped liquid.</p> <p data-bbox="320 1579 837 1603">The motor is filled with a non-toxic motor liquid.</p> <p data-bbox="320 1637 817 1722">Liquid: Liquid temperature range: 0 .. 40 °C Density: 998.2 kg/m³</p> <p data-bbox="320 1756 761 1812">Technical: Maximum particle size: 10 mm</p> <p data-bbox="320 1845 885 2049">Materials: Pump housing: Stainless steel DIN W.-Nr. 1.4301 AISI 304 Impeller: Stainless steel DIN W.-Nr. 1.4031 AISI 304</p> <p data-bbox="320 2083 459 2107">Installation:</p>

Position	Qty.	Description
		Pump outlet: Rp 1 1/4 Maximum installation depth: 2 m Electrical data: Power input - P1: 490 W C run: 20 µF Mains frequency: 50 Hz Rated voltage: 1 x 110 V Rated current: 5 A Capacitor size - run: 20 µF/250 V Enclosure class (IEC 34-5): IP68 Insulation class (IEC 85): F Length of cable: 5 m Type of cable plug: NONE Others: Net weight: 6.6 kg Gross weight: 6.9 kg Shipping volume: 0.013 m ³

Description	Value
General information:	
Product name:	Unilift KP 250 A 1
Product No:	012C6700
EAN number:	5700391116193
Price:	On request
Technical:	
Max flow:	3.11 l/s
Head max:	8 m
Maximum particle size:	10 mm
Model:	A
Materials:	
Pump housing:	Stainless steel DIN W.-Nr. 1.4301 AISI 304
Impeller:	Stainless steel DIN W.-Nr. 1.4031 AISI 304
Installation:	
Pump outlet:	Rp 1 1/4
Maximum installation depth:	2 m
Liquid:	
Liquid temperature range:	0 .. 40 °C
Density:	998.2 kg/m ³
Electrical data:	
Power input - P1:	490 W
C run:	20 µF
Mains frequency:	50 Hz
Rated voltage:	1 x 110 V
Rated current:	5 A
Capacitor size - run:	20 µF/250 V
Enclosure class (IEC 34-5):	IP68
Insulation class (IEC 85):	F
Motor protec:	CONTACT
Thermal protec:	internal
Length of cable:	5 m
Type of cable plug:	NONE
Controls:	
Level switch:	float switch
Others:	
Net weight:	6.6 kg
Gross weight:	6.9 kg
Shipping volume:	0.013 m ³

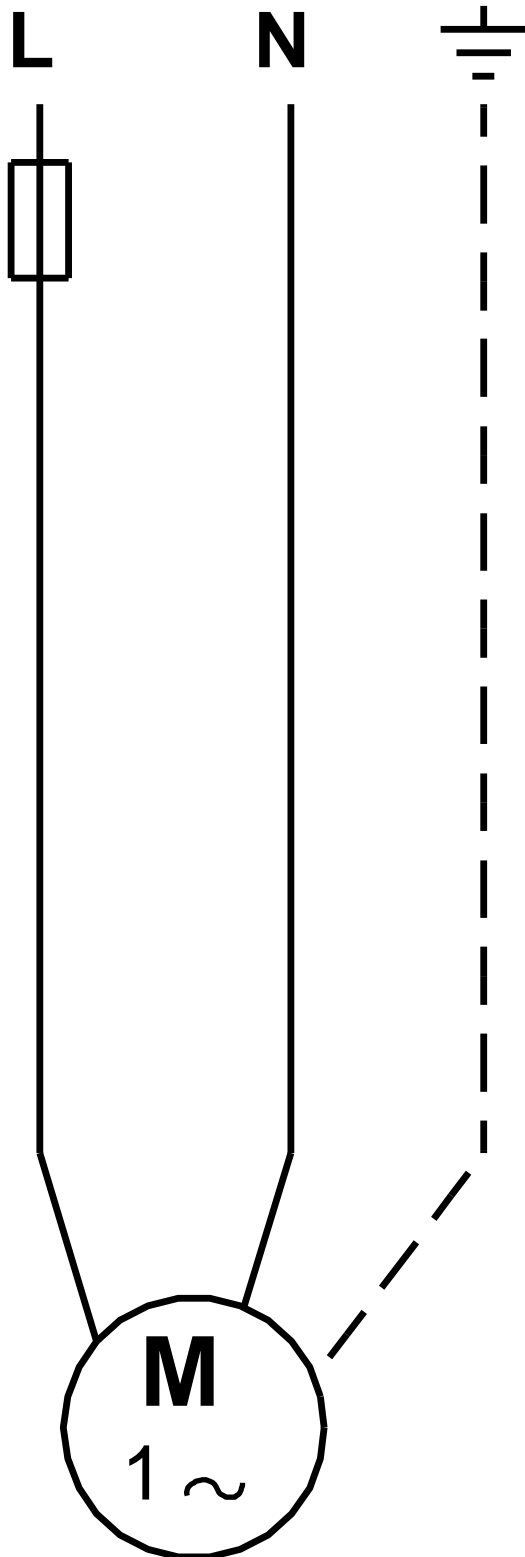


012C6700 Unilift KP 250 A 1 50 Hz



Note! All units are in [mm] unless others are stated.
Disclaimer: This simplified dimensional drawing does not show all details.

012C6700 Unilift KP 250 A 1 50 Hz



Note! All units are in [mm] unless others are stated.